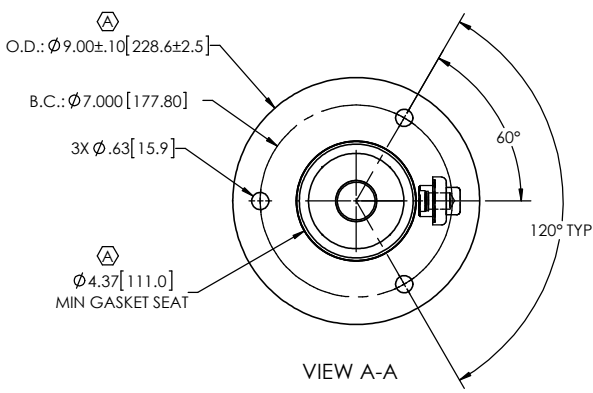
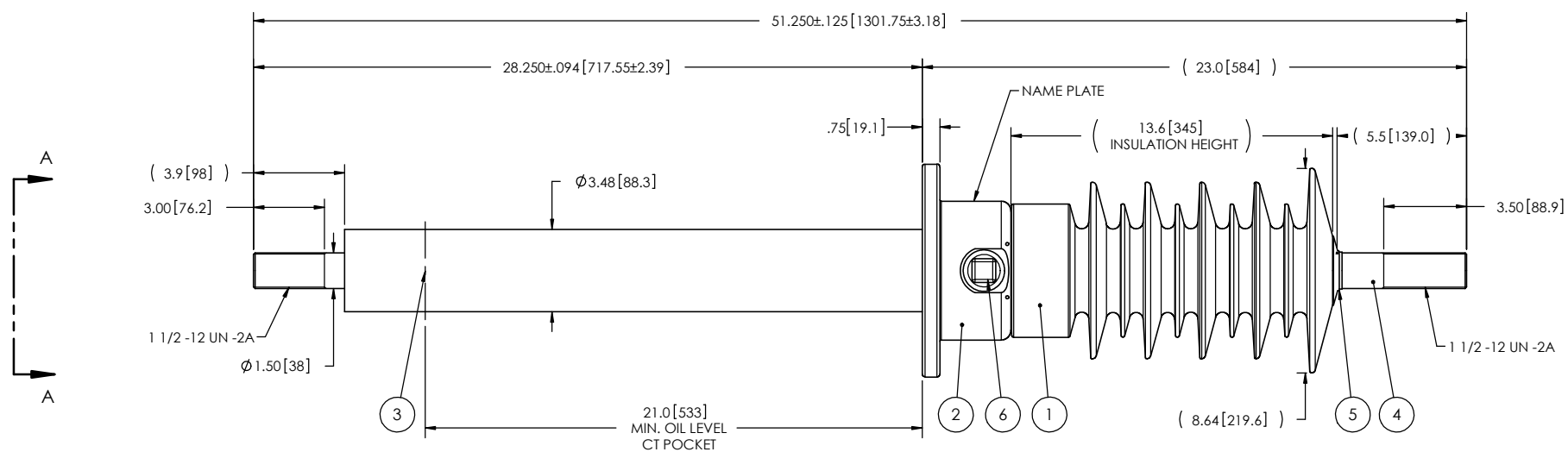


- NOTES:
- 1 CREEPAGE DISTANCE: 40.6" / 1030mm
 - 2 ARC DISTANCE: 16.3" / 413.5mm
 - 3 NOMINAL VOLTAGE: 25kV
 - 4 NOMINAL CURRENT: 1200A
 - 5 VOLTAGE WITHSTAND, 60 sec.: 60kV
 - 6 BIL : 150kV
 - 7 ROUTINE TEST ACCORDING TO: IEEE C57.19.01
 - 8 MAX. TORQUE APPLIED ON FLANGE BOLTS: 40 lbf·ft / 54.2 N·m
 - 9 WEIGHT: 69 lb / 31.3 kg

RÉVISIONS					
ZONE	REV.	DESCRIPTION	DESSINÉ PAR	DATE	APPR.
-- A2 B6 C6	A	GENERAL UPDATE TO ACTUAL STANDARD ADD THE "SDC" DESIGNATION TO THE BUSHING NAME. ADD THE MINIMUM GASKET SEAT DIMENSION. INCREASE THE TOLERANCES ON THE FLANGE OUTSIDE DIAMETER.	M. FORGET	2018-09-27	Y.V.



ITEM NO.	QTY	DRAWING NO.	PART NO.	DESCRIPTION	NOTE / MAT'L
6	1	S-1001-2022		CAPACITANCE TAP ASSEMBLY	ALUMINUM
5	1	S-1001-0007		CAP	COPPER
4	1	S-6222-5882		ROD ASSEMBLY	COPPER
3	1	S-6222-5881		SHIELD ASSEMBLY	COPPER
2	1	S-6222-5880		FLANGE	ALUMINUM
1	1	S-6222-5879	-001	CASTING, CYCLOALIPHATIC RESIN	EC-APG-02

PARTS LIST					
GENERAL TOLERANCES (UNLESS OTHERWISE SPECIFIED)			Electro Composites solid HV bushings solution		
X.	±0.125	TITLE: SDC® BUSHING 25kV, 1200A MODEL: 150-012-T-442-01			
.X	±0.094				
.XX	±0.063	DRAWN BY: J.N.PILOTTE DATE: 2010/05/13			
.XXX	±0.031				
ANGLES	±0.25°	CHECK BY:			
RADIUS	±0.031				
REMOVE BURRS AND BREAK SHARP EDGES			PROJECTING.:		
DIMENSIONS ARE IN INCHES (UNLESS OTHERWISE SPECIFIED)					
PROJECT MANAGER:			SCALE: 1:7		
GENERATED BY: SolidWorks 2013			REVISION: A		
SHEET: 1 of 1			DRAWING NO.: S-6222-5879		

This drawing is the proprietary property of Electro Composites (2008) ULC, not part of the public domain, and is issued with the express understanding and agreement that it is not to be reproduced or copied in whole or in part or issued for furnishing information to others, or used directly or indirectly, in any way detrimental to the interest of Electro Composites (2008) ULC and is to be returned upon request by Electro Composites (2008) ULC. All Rights Reserved.