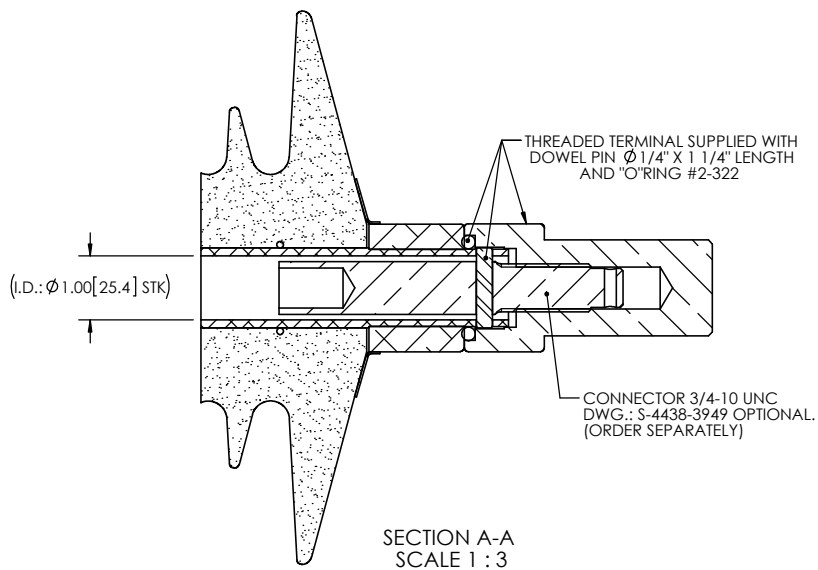
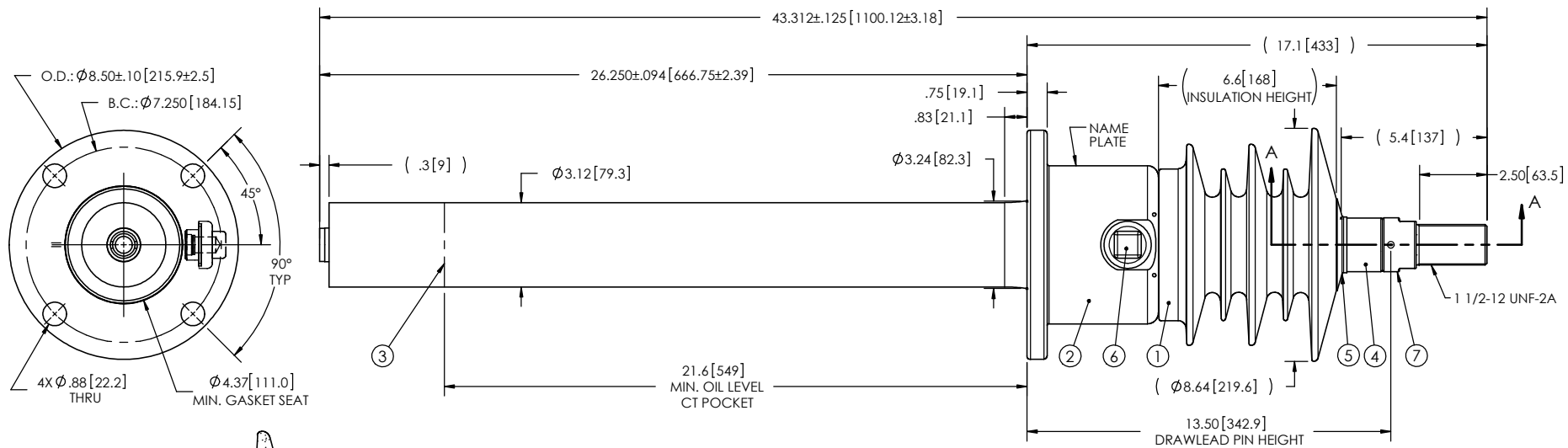


- NOTES:
- 1 CREEPAGE DISTANCE: 19.4" / 493mm
 - 2 ARC DISTANCE: 9.0" / 229mm
 - 3 NOMINAL VOLTAGE: 15kV
 - 4 NOMINAL CURRENT: 400A
 - 5 VOLTAGE WITHSTAND, 60 sec.: 50kV
 - 6 BIL: 110kV
 - 7 ROUTINE TEST ACCORDING TO: CSA C88.1-96
 - 8 MAX. TORQUE APPLIED ON FLANGE BOLTS: 40 lbf·ft / 54.2 N·m
 - 9 WEIGHT: 37 lb / 16.8 kg

| REVISIONS | | | | | |
|----------------|------|--|-----------|------------|-------|
| ZONE | REV. | DESCRIPTION | DRAWN BY | DATE | APPR. |
| | A | GENERAL UPDATE THE TUBE ASSEMBLY MATERIAL CHANGE FROM BRASS TO ALUMINUM | A.SAVARD | 2014-06-20 | Y.V. |
| | B | THREADED TERMINAL KIT WAS S-4762-4035-0 + O.A.L. WAS 44.1 | A.SAVARD | 2014-06-23 | Y.V. |
| E6 C5 F5 | C | THE FLANGE O.D. CHANGE FROM 9.0" TO 8.5" THE MIN. GASKET SEAT CHANGE FROM Ø3.28" TO Ø4.37" THE TOTAL WEIGHT OF THE BUSHING CHANGE FROM 38 lb TO 37 lb. | J. CLICHE | 2017-01-19 | Y.V. |
| | D | THE FLANGE (ITEM #2) CHANGE FROM S-5256-4789 TO S-8607-7926 | J. CLICHE | 2017-07-05 | Y.V. |



| ITEM NO. | QTY | DRAWING NO. | PART NO. | DESCRIPTION | NOTE / MAT'L |
|----------|-----|---------------|----------|-------------------------------|--------------|
| 7 | 1 | S-4831-4209-0 | | THREADED TERMINAL KIT | COPPER |
| 6 | 1 | S-1001-2022 | | CAPACITANCE TAP ASSEMBLY | ALUMINUM |
| 5 | 1 | S-1344-0162-1 | | CAP | ALUMINUM |
| 4 | 1 | S-7632-7157 | | TUBE ASSEMBLY | ALUMINUM |
| 3 | 1 | S-7632-7156 | | SHIELD ASSEMBLY | COPPER |
| 2 | 1 | S-8607-7926 | | FLANGE | ALUMINUM |
| 1 | 1 | S-7632-7155 | -001 | CASTING, CYCLOALIPHATIC RESIN | EC-APG-02 |

| PARTS LIST | | | | | |
|---|--------|---|---|-------------------------------|---------------|
| GENERAL TOLERANCES (UNLESS OTHERWISE SPECIFIED) | | | Electro Composites™ solid HV bushings solution | | |
| X. | ±0.125 | TITLE: SDC® BUSHING 15kV, 400A MODEL: 110-004-T-448-01 | | | |
| .X | ±0.094 | | DRAWN BY: J. CLICHE | DATE: 2012/03/20 | |
| .XX | ±0.063 | CHECK BY: | PROJECT NO.: | FORMAT: A | CAGE CODE: |
| .XXX | ±0.031 | PROJECT MGR.: | PROJECT MGR.: | DRAWING NO.: S-7632-7155 | REVISION: D |
| ANGLES | ±0.25° | SCALE: 1:6 | | GENERATED BY: SolidWorks 2013 | SHEET: 1 of 1 |
| RADIUS | ±0.031 | REMOVE BURRS AND BREAK SHARP EDGES | | | |
| DIMENSIONS ARE IN INCHES (UNLESS OTHERWISE SPECIFIED) | | | | | |

This drawing is the proprietary property of Electro Composites (2008) ULC, not part of the public domain, and is issued with the express understanding and agreement that it is not to be reproduced or copied in whole or in part or issued for furnishing information to others, or used directly or indirectly, in any way detrimental to the interest of Electro Composites (2008) ULC and is to be returned upon request by Electro Composites (2008) ULC. All Rights Reserved.