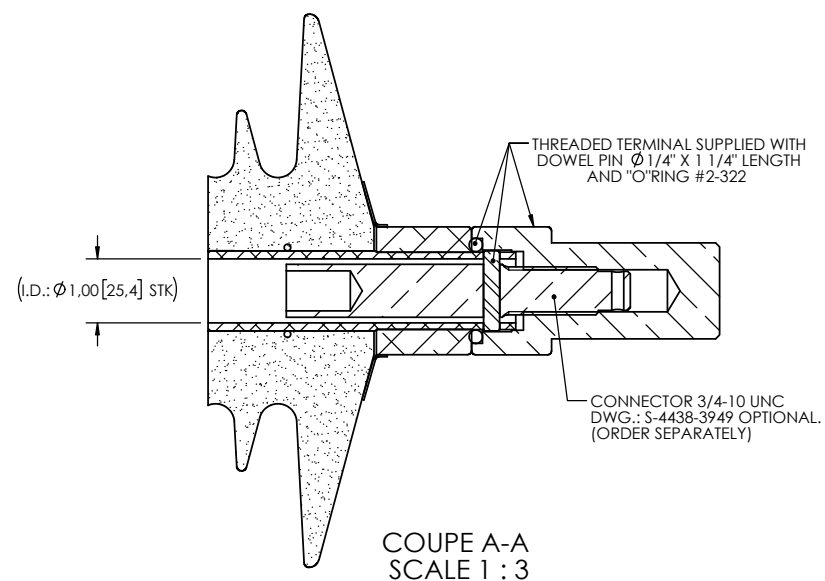
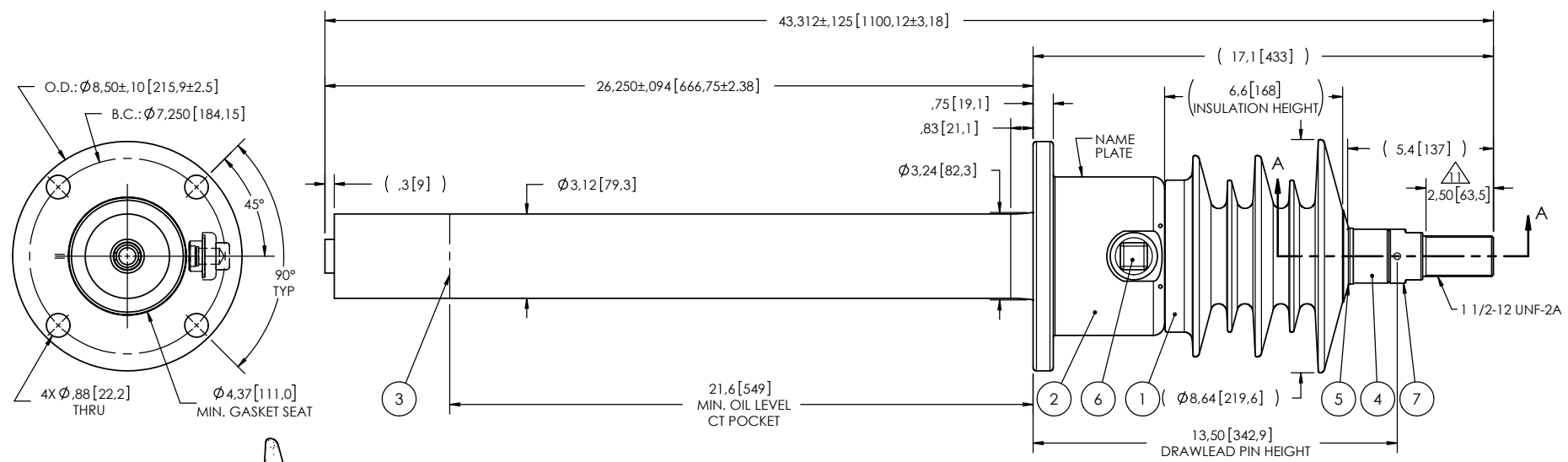


NOTES:

- 1 CREEPAGE DISTANCE: 19.4" / 493mm
 - 2 ARC DISTANCE: 9.0" / 229mm
 - 3 NOMINAL VOLTAGE: 15kV
 - 4 NOMINAL CURRENT: 600A
 - 5 VOLTAGE WITHSTAND, 60 sec.: 50kV
 - 6 BIL : 110kV
 - 7 ROUTINE TEST ACCORDING TO: CSA C88.1-96 ^(A)
 - 8 MAX. TORQUE APPLIED ON FLANGE BOLTS: 40 lbf·ft / 54.2 N·m
 - 9 WEIGHT: 37 lb / 16.8 kg
 - 10 MAXIMUM OPERATING TEMPERATURE: 130°C
- ▲ SILVER PLATED, AS PER ASTM B700, TYPE 1, GRADE D, CLASS N, NO NICKEL LAYER, FROM 13 TO 20 MICROMETERS THICKNESS

REVISIONS					
ZONE	REV.	DESCRIPTION	DRAWN BY	DATE	APPR.
F5	A	NORM CSA C88.1 -2018 BECOMES CSA 88.1 -96	M. FORGET	2020-11-19	Y.V.



ITEM NO.	QTY	DRAWING NO.	PART NO.	DESCRIPTION	NOTE / MAT'L
7	1	S-4831-4209-1		THREADED TERMINAL KIT	COPPER
6	1	S-1001-2022		CAPACITANCE TAP ASSEMBLY	ALUMINUM
5	1	S-1344-0162-1		CAP	ALUMINUM
4	1	S-4670-9935		TUBE ASSEMBLY	ALUMINUM
3	1	S-7632-7156		SHIELD ASSEMBLY	COPPER
2	1	S-8607-7926		FLANGE	ALUMINUM
1	1	S-4670-9934	-001	CASTING, CYCLOALIPHATIC RESIN	EC-APG-15NA

PARTS LIST					
GENERAL TOLERANCES (UNLESS OTHERWISE SPECIFIED)			Electro Composites solid HV bushings solution		
X.	±0.125				
.X	±0.094		TITLE: SDC [®] BUSHING 15kV, 600A MODEL: 110-006-T-448-02		
.XX	±0.063		DRAWN BY: M. FORGET DATE: 2019/04/11		
.XXX	±0.031		CHECK BY:		
ANGLES	±0.25°		PROJECT NO.:		
RADIUS	±0.031		PROJECT MANAGER:		
REMOVE BURRS AND BREAK SHARP EDGES			SCALE: 1:6		
DIMENSIONS ARE IN INCHES (UNLESS OTHERWISE SPECIFIED)			GENERATED BY: SolidWorks 2013 SHEET: 1 of 1		

This drawing is the proprietary property of Electro Composites (2008) ULC, not part of the public domain, and is issued with the express understanding and agreement that it is not to be reproduced or copied in whole or in part or issued for furnishing information to others, or used directly or indirectly, in any way detrimental to the interest of Electro Composites (2008) ULC and is to be returned upon request by Electro Composites (2008) ULC. All Rights Reserved.