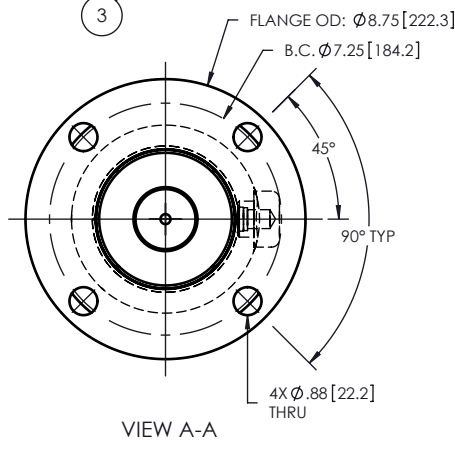
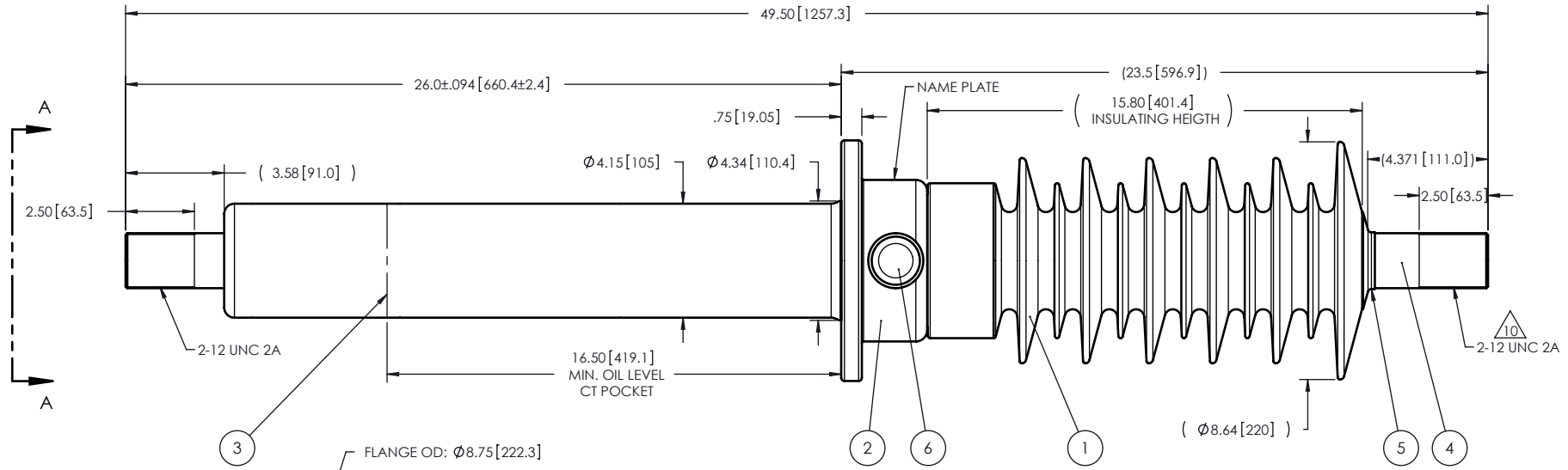


NOTES:

- 1 CREEPAGE DISTANCE: 44.6" / 1134mm
- 2 ARC DISTANCE: 18.0" / 456mm
- 3 NOMINAL VOLTAGE: 34.5kV
- 4 NOMINAL CURRENT: 2000A
- 5 WITHSTAND VOLTAGE AT 60 sec.: 80kV
- 6 B.I.L. : 200kV
- 7 APPLICATION STANDARD: IEEE C57.19.01
- 8 MAX. TORQUE APPLIED ON FLANGE BOLTS: 40 lbf x ft
- 9 WEIGHT: 92.1 lbs / 41.76 Kg
- 10 SILVER PLATED TOP END, AS PER ASTM 8700, TYPE 1, GRADE D, CLASS N, NO NICKEL LAYER, FROM 13 TO 20 MICROMETERS THICKNESS
- 11 MAXIMUM ALTITUDE : 10,000 FT
- 12 THE BUSHING MAY BE MOUNTED AT ANY ANGLE BETWEEN 0° AND 90° A

RÉVISIONS					
ZONE	REV.	DESCRIPTION	DRAW BY	DATE	APPR.
E6	A	ADD A NOTE ABOUT THE MOUNTING ANGLE BETWEEN 0° & 90°	J. CLICHE	2009-02-24	Y.V.



ITEM NO.	QTY	DRAWING NO.	PART NO.	DESCRIPTION	NOTE / MATL
6	1	S-1001-2022		CAPACITANCE TAP ASSEMBLY	ALUMINUM
5	1	S-1344-0162		CAP	COPPER
4	1	S-5608-5260		ROD ASSEMBLY	COPPER
3	1	S-5608-5259		SHIELD ASSEMBLY	COPPER
2	1	S-5023-5103		FLANGE	ALUMINUM
1	1			CASTING, CYCLOALIPHATIC RESIN	EC-APG-02

PARTS LIST

GENERAL TOLERANCES (UNLESS OTHERWISE SPECIFIED)

X. ±0.125
 .X ±0.094
 .XX ±0.063
 .XXX ±0.010
 ANGLES ±0.25°
 RADIUS ±0.031

REMOVE BURRS AND BREAK SHARP EDGES

DIMENSIONS ARE IN INCHES (UNLESS OTHERWISE SPECIFIED)

REPLACE:

DRAWN BY: J. Cliche DATE: 2009/02/19

CHECK BY:

PROJECT ENG.:

PROJECT MANAGER:

HUBBELL **Electro Composites**
POWER SYSTEMS **solid HV bushings solution**

TITLE: BUSHING 34.5kV, 2000A
MODEL: 200-020-T-456-00

FORMAT: A	CAGE CODE:	DRAWING NO.: S-5608-5258	REVISION: A
SCALE: 1:6	GENERATED BY: SolidWorks 2008	SHEET: 1 of 1	

This drawing is the proprietary property of Electro Composites (2008) ULC, not part of the public domain, and is issued with the express understanding and agreement that it is not to be reproduced or copied in whole or in part or issued for furnishing information to others, or used directly or indirectly, in any way detrimental to the interest of Electro Composites (2008) ULC and is to be returned upon request by Electro Composites (2008) ULC. All Rights Reserved.