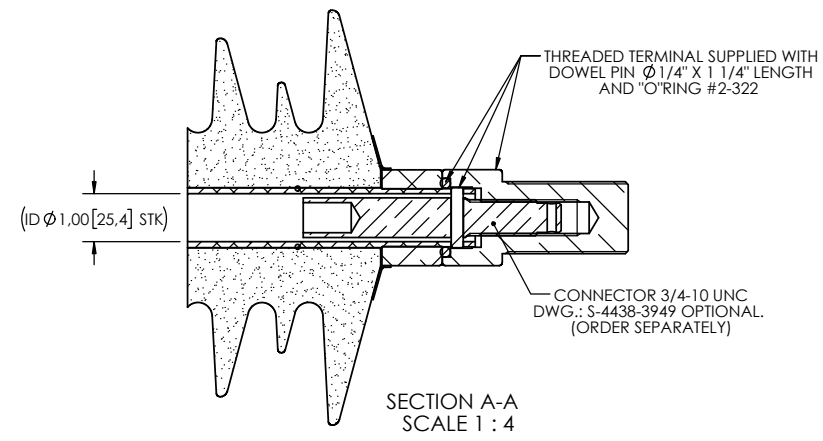
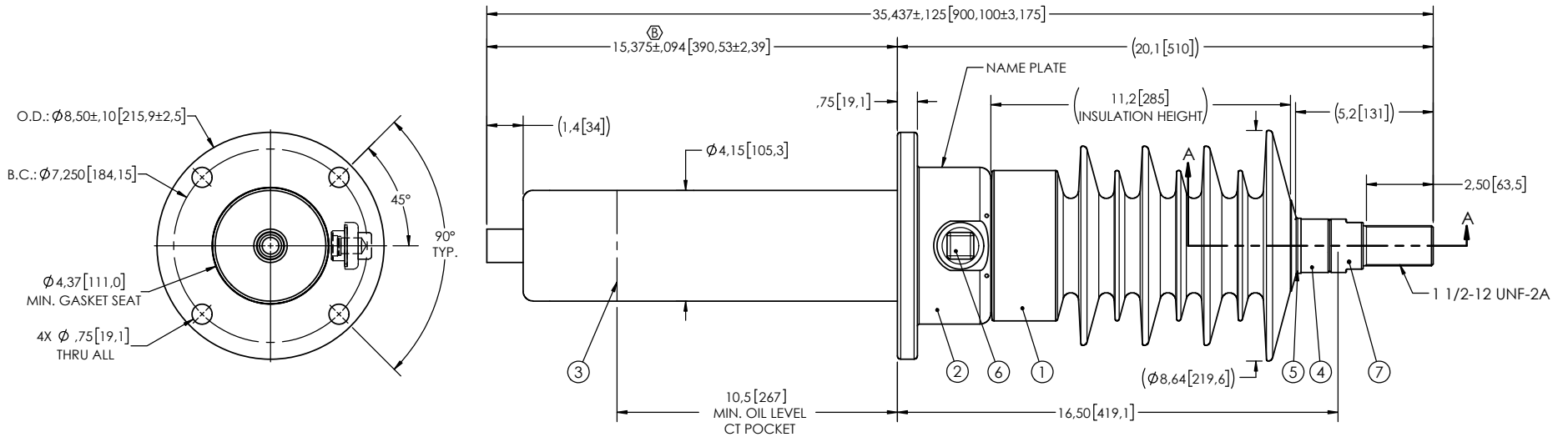


NOTES:

- 1 CREEPAGE DISTANCE: 30.0" / 768mm
- 2 ARC DISTANCE: 13.3" / 337mm
- 3 NOMINAL VOLTAGE: 27.5kV
- 4 NOMINAL CURRENT: 400A
- 5 VOLTAGE WITHSTAND, 60 sec.: 70kV
- 6 BIL: 150kV
- 7 ROUTINE TEST ACCORDING TO: CSA C88.1-96
- 8 MAX. TORQUE APPLIED ON FLANGE BOLTS: 40 lbf · ft / 54.2 N · m
- 9 WEIGHT: 40 lb / 18.1 kg

REVISIONS					
ZONE	REV.	DESCRIPTION	DRAWN BY	DATE	APPR.
D6	A	ADD THE "MINIMUM GASKET SEAT" DIMENSION	J. CLICHE	2014-05-12	Y.V.
	B	GENERAL UPDATE AS PER STANDARD + DISTANCE 15.375 WAS 15.348	A.SAVARD	2020-02-14	Y.V.



ITEM NO.	QTY	DRAWING NO.	PART NO.	DESCRIPTION	NOTE / MAT'L
7	1	S-4831-4209-0		THREADED TERMINAL KIT	COPPER
6	1	S-1001-2022		CAPACITANCE TAP ASSEMBLY	ALUMINIUM
5	1	S-1344-0162-1		CAP	ALUMINIUM
4	1	S-8680-8039		DRAW LEAD ASSEMBLY	ALUMINIUM
3	1	S-8680-8038		SHIELD ASSEMBLY	COPPER
2	1	S-8680-8037		FLANGE	ALUMINIUM
1	1	S-8680-8036	-001	CASTING, CYCLOALIPHATIC RESIN	EC-APG-02

PARTS LIST						
GENERAL TOLERANCES (UNLESS OTHERWISE SPECIFIED)			<p>Electro Composites™ solid HV bushings solution</p> <p>TITLE: SDC® BUSHING 27.5kV, 400A MODEL: 150-004-T-463-01</p>			
X.	±0.125	REMOVE BURRS AND BREAK SHARP EDGES DIMENSIONS ARE IN INCHES (UNLESS OTHERWISE SPECIFIED)	DRAWN BY:	J.N.PILOTE	DATE:	2013/09/09
.X	±0.094		CHECK BY:		PROJECT NO.:	
.XX	±0.063		PROJECT MGR.:		SCALE:	1:6
.XXX	±0.031				GENERATED BY:	SolidWorks 2013
ANGLES	±0.25°				SHEET	1 of 1
RADIUS	±0.031			REVISION	B	

This drawing is the proprietary property of Electro Composites (2008) ULC, not part of the public domain, and is issued with the express understanding and agreement that it is not to be reproduced or copied in whole or in part or issued for furnishing information to others, or used directly or indirectly, in any way detrimental to the interest of Electro Composites (2008) ULC and is to be returned upon request by Electro Composites (2008) ULC. All Rights Reserved.