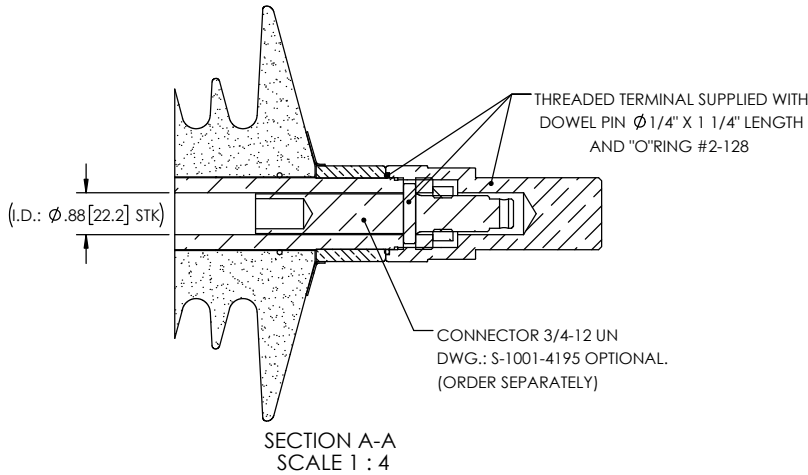
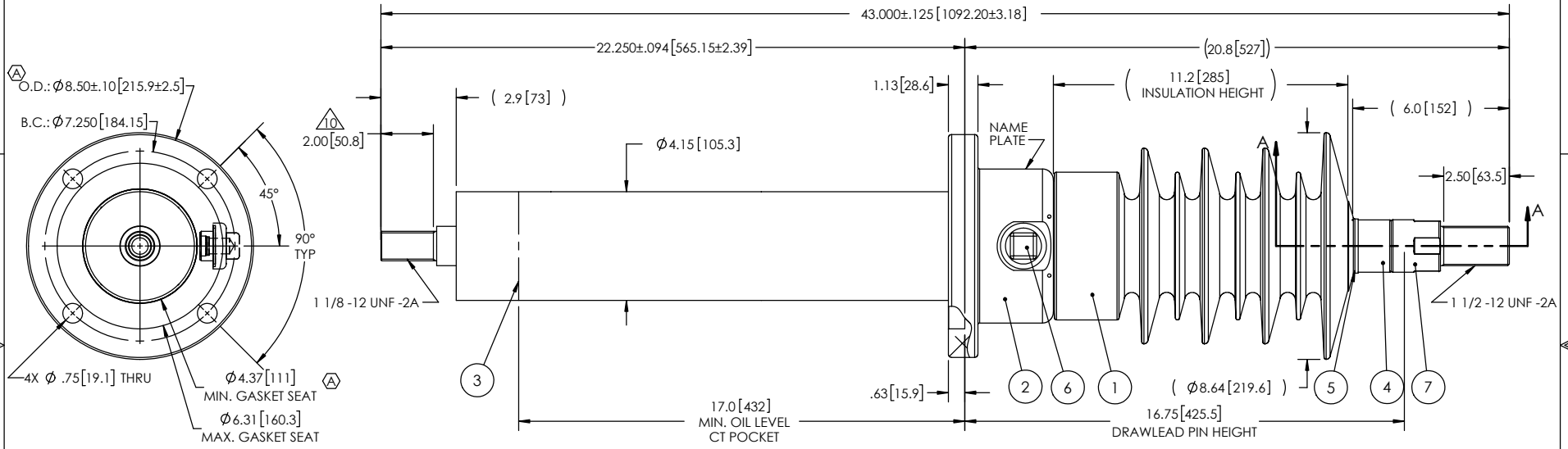


NOTES:

- 1 CREEPAGE DISTANCE: 30.5" / 777mm
- 2 ARC DISTANCE: 13.4" / 340mm
- 3 NOMINAL VOLTAGE: 25kV
- 4 NOMINAL CURRENT: 400A
- 5 VOLTAGE WITHSTAND, 60 sec.: 60kV
- 6 BIL: 150kV
- 7 ROUTINE TEST ACCORDING TO: IEEE C57.19.01
- 8 MAX. TORQUE APPLIED ON FLANGE BOLTS: 40 lbf·ft / 54.2 N·m
- 9 WEIGHT: 57 lb / 25.9 kg
- 10 BOTTOM TERMINAL MAY EXCEED IEEE TEMPERATURE LIMIT WHEN USED AT 400A.

REVISIONS					
ZONE	REV.	DESCRIPTION	DRAWN BY	DATE	APPR.
A2					
C5					
E6	A	ADD THE "SDC" DESIGNATION TO THE BUSHING NAME. ADD THE MINIMUM GASKET SEAT DIMENSION. INCREASE THE TOLERANCES ON THE FLANGE OUTSIDE DIAMETER.	M. FORGET	2021-08-17	Y.V.



This drawing is the proprietary property of Electro Composites (2008) ULC, not part of the public domain, and is issued with the express understanding and agreement that it is not to be reproduced or copied in whole or in part or issued for furnishing information to others, or used directly or indirectly, in any way detrimental to the interest of Electro Composites (2008) ULC and is to be returned upon request by Electro Composites (2008) ULC. All Rights Reserved.

ITEM NO.	QTY	DRAWING NO.	PART NO.	DESCRIPTION	NOTE / MAT'L
7	1	S-5595-5338-0		THREADED TERMINAL KIT	COPPER
6	1	S-1001-2022		CAPACITANCE TAP ASSEMBLY	ALUMINUM
5	1	S-1344-0162-0		CAP	COPPER
4	1	S-5595-5309		DRAWLEAD ASSEMBLY	COPPER
3	1	S-5595-10311		SHIELD ASSEMBLY	COPPER
2	1	S-5595-5307		FLANGE	ALUMINUM
1	1	S-5595-5306	-001	CASTING, CYCLOALIPHATIC RESIN	EC-APG-02

PARTS LIST

GENERAL TOLERANCES (UNLESS OTHERWISE SPECIFIED)

- X. ±0.125
- .X ±0.094
- .XX ±0.063
- .XXX ±0.031
- ANGLES ±0.25°
- RADIUS ±0.031

REMOVE BURRS AND BREAK SHARP EDGES

DIMENSIONS ARE IN INCHES (UNLESS OTHERWISE SPECIFIED)

**ElectroComposites™**  
**solid HV bushings solution**

TITLE: **SDC® BUSHING 25kV, 400A**  
**MODEL: 150-004-T-465-00**

DRAWN BY: J.N.PILOTTE	DATE: 2009/03/12	FORMAT: A	CAGE CODE:	DRAWING NO.: S-5595-5306	REVISION: A
CHECK BY:		PROJECT ENG.:		GENERATED BY: SolidWorks 2020	SHEET: 1 of 1
PROJECT MGR.:		SCALE: 1:6			