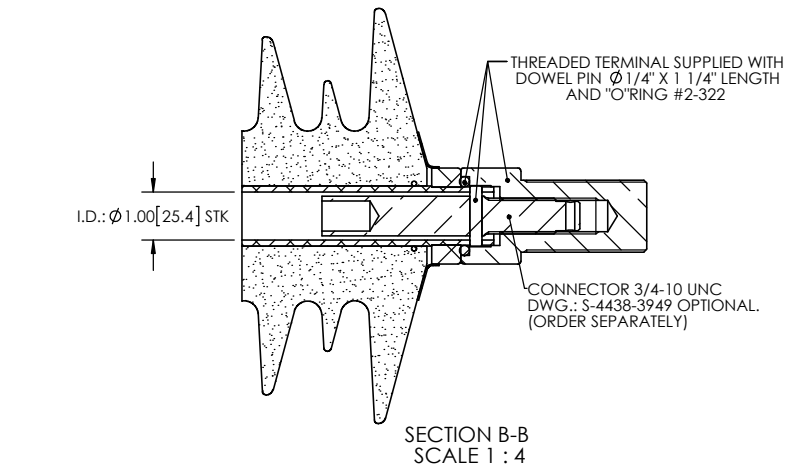
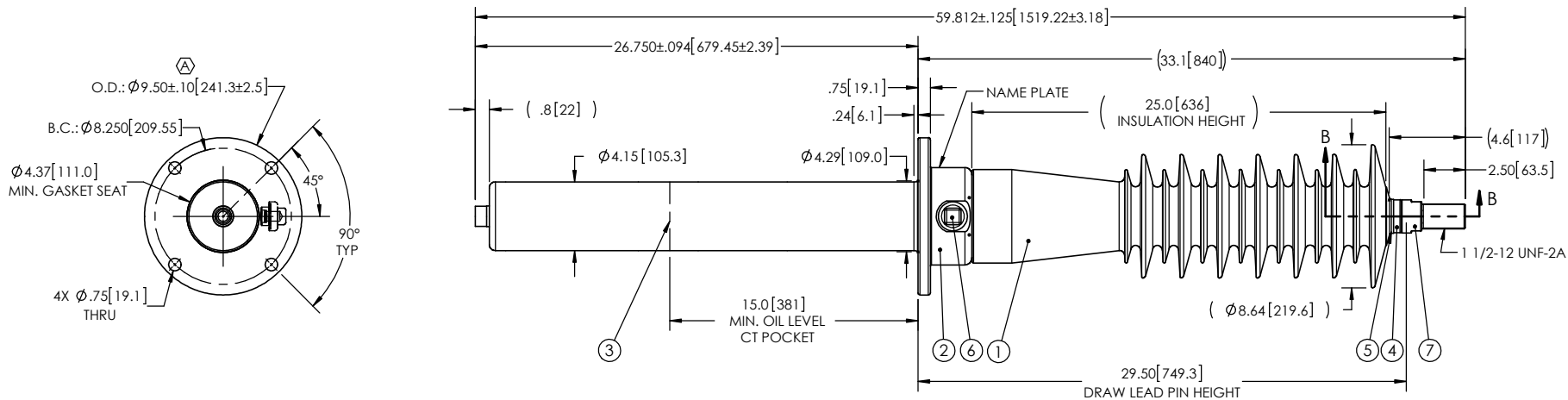


- NOTES:
- 1 CREEPAGE DISTANCE: 59.1" / 1501mm
 - 2 ARC DISTANCE: 27.1" / 688mm
 - 3 NOMINAL VOLTAGE: 72.5kV
 - 4 NOMINAL CURRENT: 400A
 - 5 VOLTAGE WITHSTAND, 60 sec.: 175kV
 - 6 BIL : 350kV
 - 7 ROUTINE TEST ACCORDING TO: CSA C88.1-96
 - 8 MAX. TORQUE APPLIED ON FLANGE BOLTS: 70 lbf·ft / 94.9 N·m (A)
 - 9 WEIGHT: 68 lb / 30.8 Kg

REVISIONS					
ZONE	REV.	DESCRIPTION	DRAWN BY	DATE	APPR.
F5 E6	A	MAX. TORQUE APPLIED ON FLANGE BOLT CHANGE FROM 40 lbf·ft TO 70 lbf·ft INCREASE THE TOLERANCES ON THE FLANGE OUTSIDE DIAMETER.	J. CLICHE	2016-11-04	J.V.



ITEM NO.	QTY	DRAWING NO.	PART NO.	DESCRIPTION	NOTE / MAT'L
7	1	S-4831-4209-0		THREADED TERMINAL KIT	COPPER
6	1	S-1001-2022		CAPACITANCE TAP ASSEMBLY	ALUMINUM
5	1	S-1344-0162-1		CAP	ALUMINUM
4	1	S-5596-8245		TUBE ASSEMBLY	ALUMINUM
3	1	S-5681-5313		SHIELD ASSEMBLY	COPPER
2	1	S-7922-7362		FLANGE	ALUMINUM
1	1	S-5596-8244	-001	CASTING, CYCLOALIPHATIC RESIN	EC-APG-02

PARTS LIST

GENERAL TOLERANCES (UNLESS OTHERWISE SPECIFIED)

X.	±0.125
.X	±0.094
.XX	±0.063
.XXX	±0.031
ANGLES	±0.25°
RADIUS	±0.031

REMOVE BURRS AND BREAK SHARP EDGES

DIMENSIONS ARE IN INCHES (UNLESS OTHERWISE SPECIFIED)

Electro Composites™
solid HV bushings solution

TITLE: SDC® BUSHING 72.5kV, 400A
MODEL: 350-004-T-466-01

DRAWN BY: J. CLICHE	DATE: 2014/02/12	FORMAT: A	CAGE CODE:	DRAWING NO.: S-5596-8244	REVISION: A
CHECK BY:		PROJECTING:		GENERATED BY: SolidWorks 2013	SHEET: 1 of 1
PROJECT MANAGER:		SCALE: 1:10			

This drawing is the proprietary property of Electro Composites (2008) ULC, not part of the public domain, and is issued with the express understanding and agreement that it is not to be reproduced or copied in whole or in part or issued for furnishing information to others, or used directly or indirectly, in any way detrimental to the interest of Electro Composites (2008) ULC and is to be returned upon request by Electro Composites (2008) ULC. All Rights Reserved.