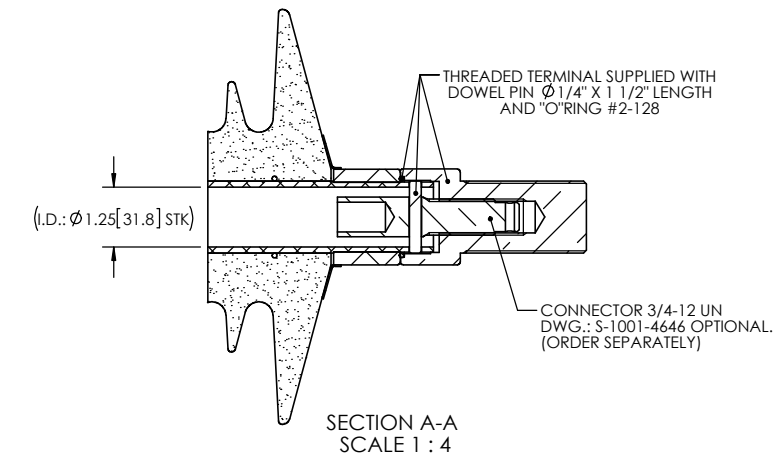
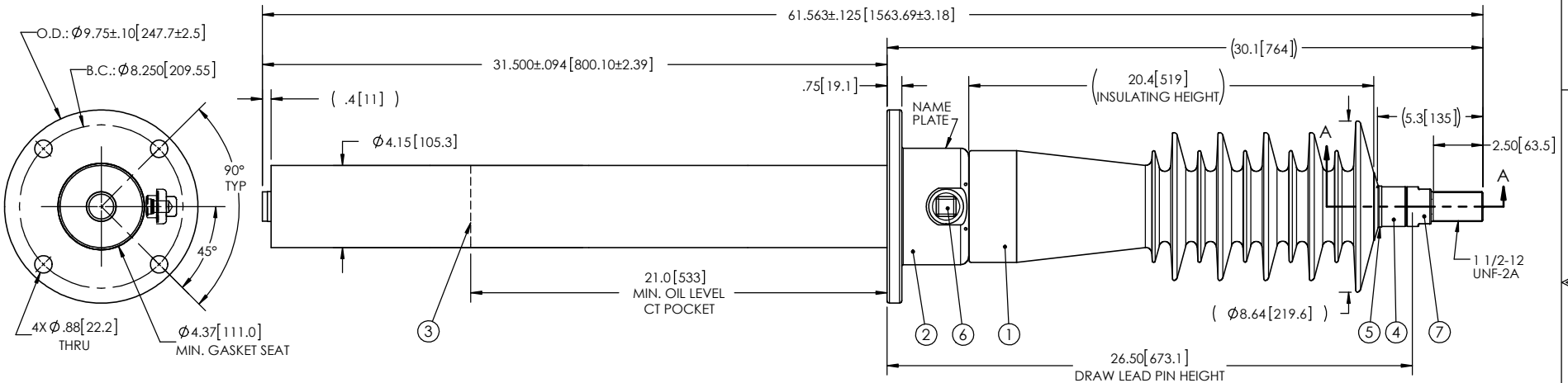


- NOTES:
- 1 CREEPAGE DISTANCE: 45.1" / 1146mm
  - 2 ARC DISTANCE: 22.5" / 572mm
  - 3 NOMINAL VOLTAGE: 46kV
  - 4 NOMINAL CURRENT: 400A
  - 5 VOLTAGE WITHSTAND, 60 sec.: 105kV
  - 6 BIL : 250kV
  - 7 ROUTINE TEST ACCORDING TO: IEEE C57.19.01
  - 8 MAX. TORQUE APPLIED ON FLANGE BOLTS: 40 lbf·ft / 54.2 N·m
  - 9 WEIGHT: 68 lb / 30.8 Kg

REVISIONS					
ZONE	REV.	DESCRIPTION	DRAWN BY	DATE	APPR.



ITEM NO.	Defa ut/Q TY	DRAWING NO.	PART NO.	DESCRIPTION	NOTE / MAT'L
7	1	S-7496-7233-0		THREADED TERMINAL KIT	COPPER
6	1	S-1001-2022		CAPACITANCE TAP ASSEMBLY	ALUMINUM
5	1	S-1344-0162-1		CAP	ALUMINUM
4	1	S-5677-5329		TUBE ASSEMBLY	ALUMINUM
3	1	S-5677-5328		SHIELD ASSEMBLY	COPPER
2	1	S-5677-7695		FLANGE	ALUMINUM
1	1	S-1777-9402	-001	CASTING, CYCLOALIPHATIC RESIN	EC-APG-02

PARTS LIST					
GENERAL TOLERANCES (UNLESS OTHERWISE SPECIFIED)			<b>ElectroComposites™</b> <b>solid HV bushings solution</b>		
X.	±0.125	<b>TITLE:</b> SDC® BUSHING 46kV, 400A MODEL: 250-004-T-469-02			
.X	±0.094		<b>DRAWN BY:</b> J. CLICHE	<b>DATE:</b> 2017/06/20	
.XX	±0.063	<b>REMOVE BURRS AND BREAK SHARP EDGES</b>	<b>PROJECTING.:</b>	<b>FORMAT:</b> A	<b>CAGE CODE:</b>
.XXX	±0.031	<b>DIMENSIONS ARE IN INCHES (UNLESS OTHERWISE SPECIFIED)</b>	<b>PROJECT MANAGER:</b>	<b>DRAWING NO.:</b> S-1777-9402	<b>REVISION:</b> NR
ANGLES	±0.25°			<b>SCALE:</b> 1:8	<b>GENERATED BY:</b> SolidWorks 2013
RADIUS	±0.031				<b>SHEET:</b> 1 of 1

This drawing is the proprietary property of Electro Composites (2008) ULC, not part of the public domain, and is issued with the express understanding and agreement that it is not to be reproduced or copied in whole or in part or issued for furnishing information to others, or used directly or indirectly, in any way detrimental to the interest of Electro Composites (2008) ULC and is to be returned upon request by Electro Composites (2008) ULC. All Rights Reserved.