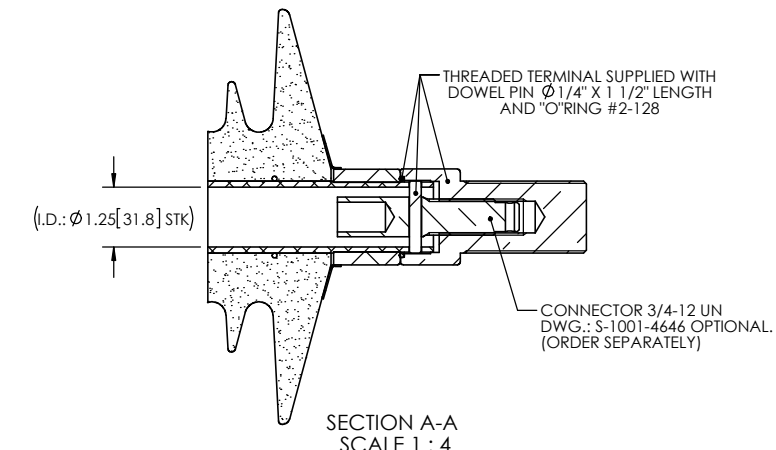
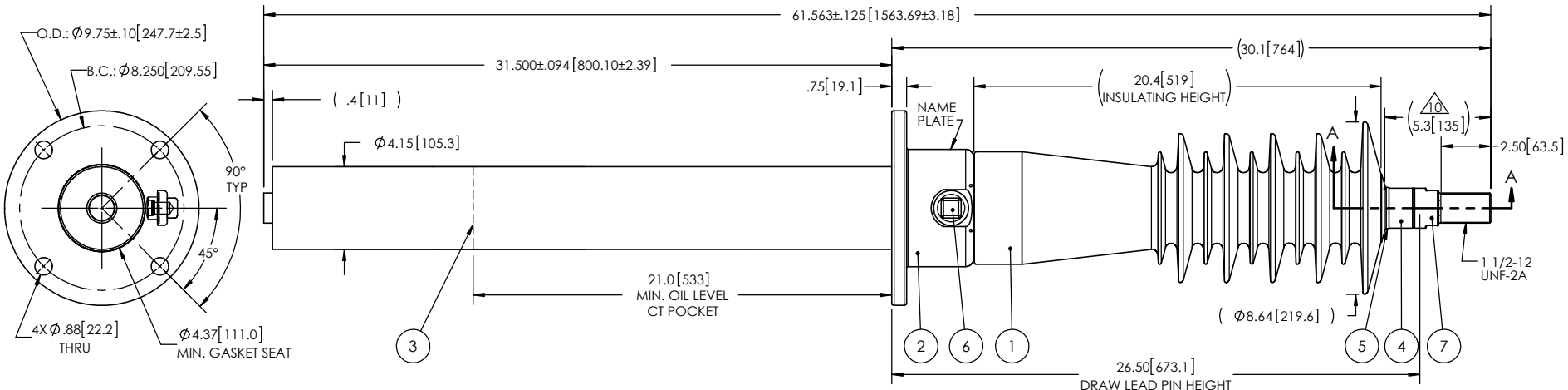


- NOTES:
- 1 CREEPAGE DISTANCE: 45.1" / 1146mm
  - 2 ARC DISTANCE: 22.5" / 572mm
  - 3 NOMINAL VOLTAGE: 46kV
  - 4 NOMINAL CURRENT: 400A
  - 5 VOLTAGE WITHSTAND, 60 sec.: 105kV
  - 6 BIL : 250kV
  - 7 ROUTINE TEST ACCORDING TO: IEEE C57.19.01
  - 8 MAX. TORQUE APPLIED ON FLANGE BOLTS: 40 lbf·ft / 54.2 N·m
  - 9 WEIGHT: 68 lb / 30.8 kg
- △ SILVER PLATED, AS PER ASTM B700, TYPE 1, GRADE D, CLASS N, NO NICKEL LAYER, FROM 13 TO 20 MICROMETERS THICKNESS

| REVISIONS |      |             |          |      |       |
|-----------|------|-------------|----------|------|-------|
| ZONE      | REV. | DESCRIPTION | DRAWN BY | DATE | APPR. |



| ITEM NO. | QTY | DRAWING NO.   | PART NO. | DESCRIPTION                   | NOTE / MAT'L |
|----------|-----|---------------|----------|-------------------------------|--------------|
| 7        | 1   | S-7496-7233-1 |          | THREADED TERMINAL KIT         | COPPER       |
| 6        | 1   | S-1001-2022   |          | CAPACITANCE TAP ASSEMBLY      | ALUMINUM     |
| 5        | 1   | S-1344-0162-1 |          | CAP                           | ALUMINUM     |
| 4        | 1   | S-5677-5329   |          | TUBE ASSEMBLY                 | ALUMINUM     |
| 3        | 1   | S-5677-5328   |          | SHIELD ASSEMBLY               | COPPER       |
| 2        | 1   | S-5677-7695   |          | FLANGE                        | ALUMINUM     |
| 1        | 1   | S-3528-10051  | -001     | CASTING, CYCLOALIPHATIC RESIN | EC-APG-02    |

**ElectroComposites™**  
**solid HV bushings solution**

TITLE: SDC® BUSHING 46kV, 700A  
MODEL: 250-007-T-469-03

|                     |                  |              |           |                               |               |
|---------------------|------------------|--------------|-----------|-------------------------------|---------------|
| DRAWN BY: M. FORGET | DATE: 2019/10/02 | FORMAT: A    | CAGE CODE | DRAWING NO.: S-3528-10051     | REVISION: NR  |
| CHECK BY:           |                  | PROJECT NO.: |           | GENERATED BY: SolidWorks 2013 | SHEET: 1 of 1 |
| PROJECT MANAGER:    |                  | SCALE: 1:8   |           |                               |               |

GENERAL TOLERANCES (UNLESS OTHERWISE SPECIFIED)

|        |        |
|--------|--------|
| X.     | ±0.125 |
| .X     | ±0.094 |
| .XX    | ±0.063 |
| .XXX   | ±0.031 |
| ANGLES | ±0.25° |
| RADIUS | ±0.031 |

REMOVE BURRS AND BREAK SHARP EDGES

DIMENSIONS ARE IN INCHES (UNLESS OTHERWISE SPECIFIED)

This drawing is the proprietary property of Electro Composites (2008) ULC, not part of the public domain, and is issued with the express understanding and agreement that it is not to be reproduced or copied in whole or in part or issued for furnishing information to others, or used directly or indirectly, in any way detrimental to the interest of Electro Composites (2008) ULC and is to be returned upon request by Electro Composites (2008) ULC. All Rights Reserved.