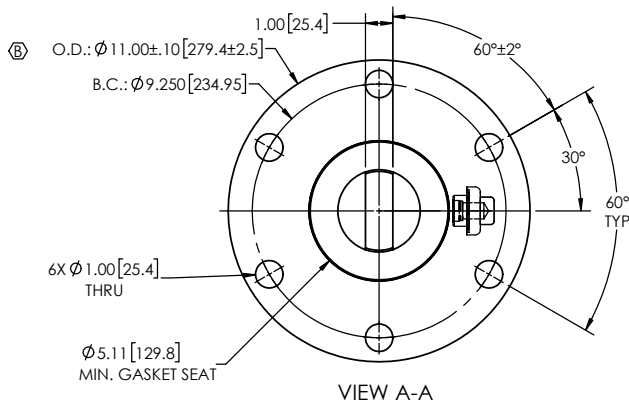
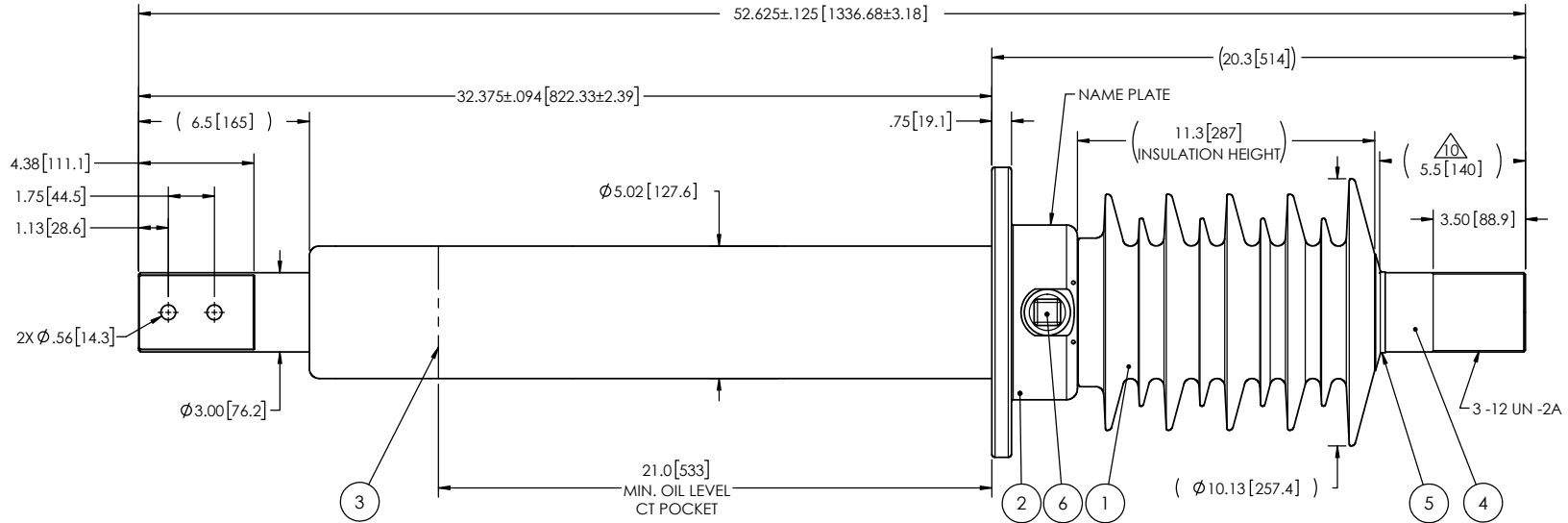


REVISIONS					
ZONE	REV.	DESCRIPTION	DRAWN BY	DATE	APPR.
C6 A6	A	ADD THE ANGLE BETWEEN THE SPADE SURFACE & A FLANGE HOLE ADD THE "MIN. GASKET SEAT" DIMENSION	J. CLICHE	2014-06-20	Y.V.
B4	B	CASTING DRAWING NUMBER CHANGED FROM S-8872-8072 TO S-7850-7372	M. FORGET	2023-10-02	Y.V.

- NOTES:
- 1 CREEPAGE DISTANCE: 34.2" / 870mm
 - 2 ARC DISTANCE: 14.3" / 363mm
 - 3 NOMINAL VOLTAGE: 25KV
 - 4 NOMINAL CURRENT: 4000A
 - 5 VOLTAGE WITHSTAND, 60 sec.: 60kV
 - 6 BIL : 150kV
 - 7 ROUTINE TEST ACCORDING TO: IEEE C57.19.01
 - 8 MAX. TORQUE APPLIED ON FLANGE BOLTS: 70 lbf·ft / 94.9 N·m
 - 9 WEIGHT: 166 lb / 75.3 Kg
 - 10 SILVER PLATED, AS PER ASTM B700, TYPE 1, GRADE D, CLASS N, NO NICKEL LAYER, FROM 13 TO 20 MICROMETERS THICKNESS



This drawing is the proprietary property of Electro Composites (2008) ULC, not part of the public domain, and is issued with the express understanding and agreement that it is not to be reproduced or copied in whole or in part or issued for furnishing information to others, or used directly or indirectly, in any way detrimental to the interest of Electro Composites (2008) ULC and is to be returned upon request by Electro Composites (2008) ULC. All Rights Reserved.

ITEM NO.	QTY	DRAWING NO.	PART NO.	DESCRIPTION	NOTE / MAT'L
6	1	S-1001-2022		CAPACITANCE TAP ASSEMBLY	ALUMINUM
5	1	S-3529-2532-0		CAP	COPPER
4	1	S-7850-7375		ROD ASSEMBLY	COPPER
3	1	S-5670-5342		SHIELD ASSEMBLY	COPPER
2	1	S-7850-7373		FLANGE	ALUMINUM
1	1	S-7850-7372	-001	CASTING, CYCLOALIPHATIC RESIN	EC-APG-02

PARTS LIST					
GENERAL TOLERANCES (UNLESS OTHERWISE SPECIFIED)			Electro Composites solid HV bushings solution		
X.	±0.125	TITLE: SDC® BUSHING 25kV, 4000A MODEL: 150-040-T-470-03			
.X	±0.094				
.XX	±0.063				
.XXX	±0.031				
ANGLES	±0.25°				
RADIUS	±0.031				
REMOVE BURRS AND BREAK SHARP EDGES			DRAWN BY: J.N.PILOTTE DATE: 2012/07/30		
DIMENSIONS ARE IN INCHES (UNLESS OTHERWISE SPECIFIED)			PROJECT MANAGER:		
SCALE: 1:7		PROJECT NO.:		DRAWING NO.: S-7850-7372	
GENERATED BY: SolidWorks 2022		SHEET: 1 of 1		REVISION: B	