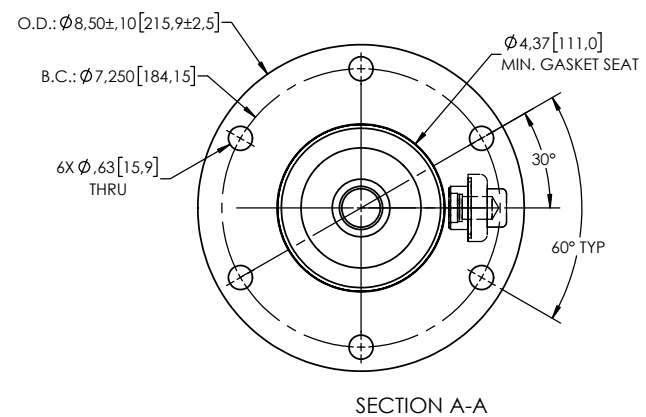
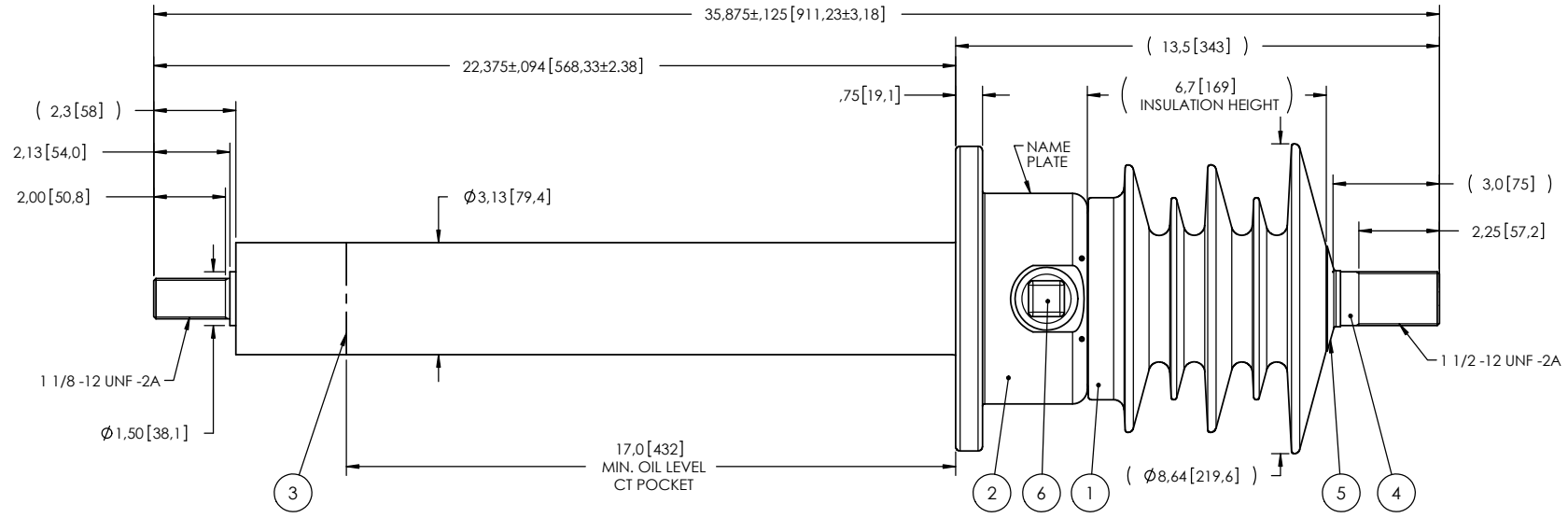


NOTES:

- 1 CREEPAGE DISTANCE: 19.5"/496mm
- 2 ARC DISTANCE: 9.2"/233mm
- 3 NOMINAL VOLTAGE: 15 kV
- 4 NOMINAL CURRENT: 1200A
- 5 VOLTAGE WITHSTAND, 60 sec.: 50 kV
- 6 BIL: 110 kV
- 7 ROUTINE TEST ACCORDING TO: IEEE C57.19.01
- 8 MAX. TORQUE APPLIED ON FLANGE BOLTS: 40 lbf·ft / 54.2 N·m
- 9 WEIGHT 46 lb / 20.9 kg

REVISIONS					
ZONE	REV.	DESCRIPTION	DRAWN BY	DATE	APPR.
A2 C5	A	ADD THE "SDC" DESIGNATION TO THE BUSHING NAME ADD THE "MINIMUM GASKET SEAT" DIMENSION	J. CLICHE	2014-08-14	Y.V.
- B2	B	GENERAL UPDATE TO ACTUAL STANDARD REORDER ITEMS NUMBERS AND ADD FLANGE DESCRIPTION	M. FORGET	2020-10-20	Y.V.



ITEM NO.	QTY	DRAWING NO.	PART NO.	DESCRIPTION	NOTE / MAT'L
6	1	S-1001-2022		CAPACITANCE TAP ASSEMBLY	ALUMINUM
5	1	S-1001-0007		CAP	COPPER
4	1	S-6767-6382		ROD ASSEMBLY	COPPER
3	1	S-6767-6381		SHIELD ASSEMBLY	COPPER
2	1	S-6767-6380		FLANGE	ALUMINUM
1	1	S-6767-6354	-001	CASTING, CYCLOALIPHATIC RESIN	EC-APG-02

PARTS LIST (B)

GENERAL TOLERANCES (UNLESS OTHERWISE SPECIFIED) X. ±0.125 .X ±0.094 .XX ±0.063 .XXX ±0.031 ANGLES ±0.25° RADIUS ±0.031		REMOVE BURRS AND BREAK SHARP EDGES DIMENSIONS ARE IN INCHES (UNLESS OTHERWISE SPECIFIED)		ElectroComposites™ solid HV bushings solution	
DRAWN BY: J.N.PILOTTE CHECK BY: PROJECT ENG.: PROJECT MANAGER:		DATE: 2011/03/03		TITLE: SDC® BUSHING 15kV, 1200A MODEL: 110-012-T-471-01	
SCALE: 1:5		FORMAT: A CAGE CODE: DRAWING NO.: S-6767-6354 REVISION: B		GENERATED BY: SolidWorks 2013 SHEET: 1 of 1	

This drawing is the proprietary property of Electro Composites (2008) ULC, not part of the public domain, and is issued with the express understanding and agreement that it is not to be reproduced or copied in whole or in part or issued for furnishing information to others, or used directly or indirectly, in any way detrimental to the interest of Electro Composites (2008) ULC and is to be returned upon request by Electro Composites (2008) ULC. All Rights Reserved.