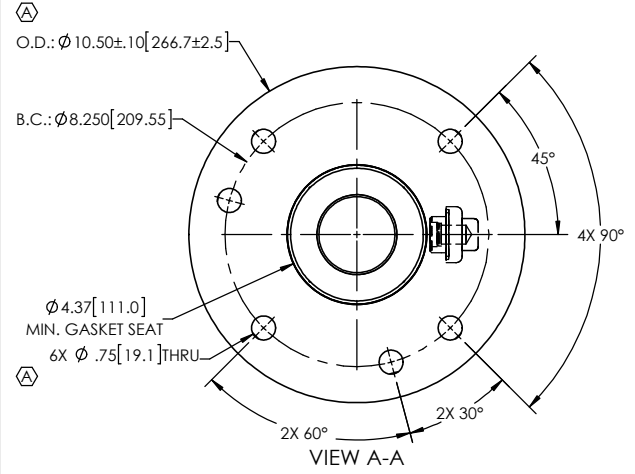
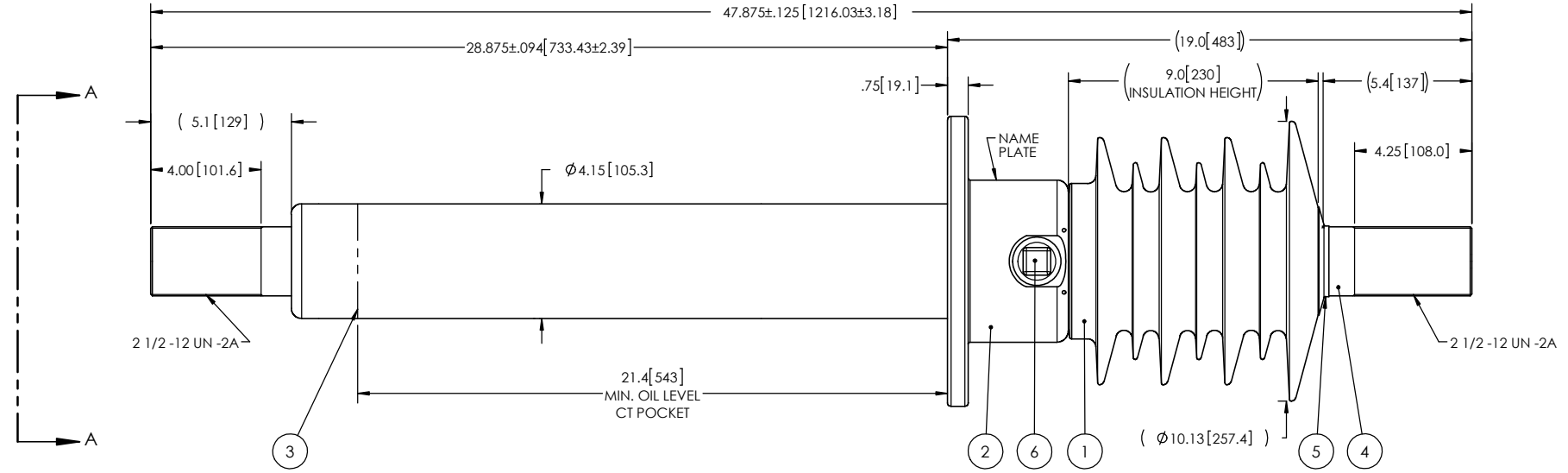


- NOTES:
- 1 CREEPAGE DISTANCE: 27.5" / 699.1mm
 - 2 ARC DISTANCE: 12.4" / 315.1mm
 - 3 NOMINAL VOLTAGE: 15kV
 - 4 NOMINAL CURRENT: 3000A
 - 5 VOLTAGE WITHSTAND, 60 sec.: 50kV
 - 6 BIL : 110kV
 - 7 ROUTINE TEST ACCORDING TO: IEEE C57.19.01
 - 8 MAX. TORQUE APPLIED ON FLANGE BOLTS: 40 lbf · ft / 54.2 N · m
 - 9 WEIGHT: 117.84 lb / 53.45 kg
 - 10 SUITABLE FOR VERTICAL AND HORIZONTAL INSTALLATION

REVISIONS					
ZONE	REV.	DESCRIPTION	DRAWN BY	DATE	APPR.
A2 A6 C6	A	ADD THE "SDC" DESIGNATION TO THE BUSHING NAME. ADD THE MINIMUM GASKET SEAT DIMENSION. INCREASE THE TOLERANCES ON THE FLANGE OUTSIDE DIAMETER.	M. FORGET	2019-07-03	Y.V.



ITEM NO.	QTY	DRAWING NO.	PART NO.	DESCRIPTION	NOTE / MAT'L
6	1	S-1001-2022		CAPACITANCE TAP ASSEMBLY	ALUMINUM
5	1	S-3692-2417-0		CAP	COPPER
4	1	S-5927-5556		ROD ASSEMBLY	COPPER
3	1	S-5927-5555		SHIELD ASSEMBLY	COPPER
2	1	S-5927-5554		FLANGE	ALUMINUM
1	1	S-5927-5553	-001	CASTING, CYCLOALIPHATIC RESIN	EC-APG-02

PARTS LIST					
GENERAL TOLERANCES (UNLESS OTHERWISE SPECIFIED)			<p>Electro Composites solid HV bushings solution</p> <p>TITLE: SDC® BUSHING 15kV, 3000A MODEL: 110-030-T-475-00</p>		
X.	±0.125				
.X	±0.094			DRAWN BY: J.N.PILOTTE	DATE: 2009/09/23
.XX	±0.063			CHECK BY:	
.XXX	±0.031			PROJECTING:	
ANGLES	±0.25°			PROJECT MANAGER:	
RADIUS	±0.031			SCALE: 1:6	GENERATED BY: SolidWorks 2009
REMOVE BURRS AND BREAK SHARP EDGES			SHEET: 1 of 1		
DIMENSIONS ARE IN INCHES (UNLESS OTHERWISE SPECIFIED)			DRAWING NO.: S-5927-5553		
			REVISION: A		

This drawing is the proprietary property of Electro Composites (2008) ULC, not part of the public domain, and is issued with the express understanding and agreement that it is not to be reproduced or copied in whole or in part or issued for furnishing information to others, or used directly or indirectly, in any way detrimental to the interest of Electro Composites (2008) ULC and is to be returned upon request by Electro Composites (2008) ULC. All Rights Reserved.