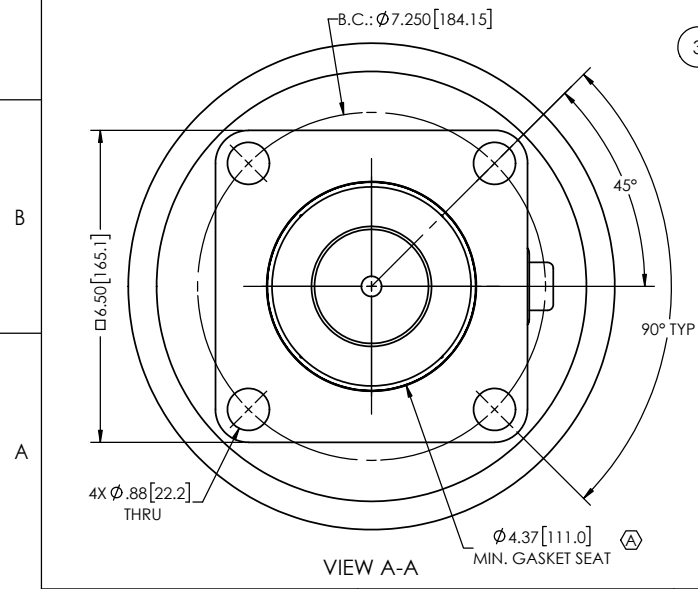
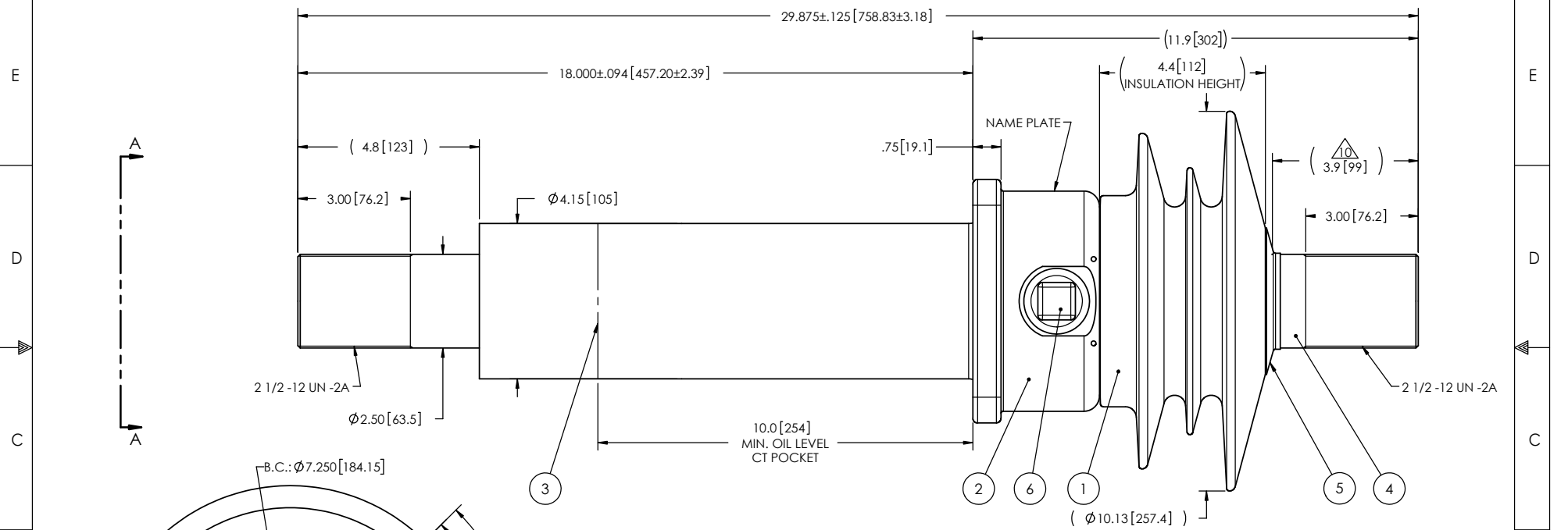


- NOTES:
- 1 CREEPAGE DISTANCE: 13.8" / 351mm
 - 2 ARC DISTANCE: 7.8" / 198mm
 - 3 NOMINAL VOLTAGE: 15kV
 - 4 NOMINAL CURRENT: 3000A
 - 5 VOLTAGE WITHSTAND, 60 sec.: 50kV
 - 6 BIL : 110kV
 - 7 ROUTINE TEST ACCORDING TO: IEEE C57.19.01
 - 8 MAX. TORQUE APPLIED ON FLANGE BOLTS: 40 lbf·ft / 54.2 N·m
 - 9 WEIGHT: 71 lb / 32.2 kg
- SILVER PLATED, AS PER ASTM B700, TYPE 1, GRADE D, CLASS N, NO NICKEL LAYER, FROM 13 TO 20 MICROMETERS THICKNESS

REVISIONS					
ZONE	REV.	DESCRIPTION	DRAWN BY	DATE	APPR.
A2 A3 A5	A	ADD THE "SDC" DESIGNATION TO THE BUSHING NAME. UPDATE GENERAL TOLERANCES TO ACTUAL STANDARD ADD THE MINIMUM GASKET SEAT DIMENSION.	M. FORGET	2022-07-20	Y.V.



This drawing is the proprietary property of Electro Composites (2008) ULC, not part of the public domain, and is issued with the express understanding and agreement that it is not to be reproduced or copied in whole or in part or issued for furnishing information to others, or used directly or indirectly, in any way detrimental to the interest of Electro Composites (2008) ULC and is to be returned upon request by Electro Composites (2008) ULC. All Rights Reserved.

ITEM NO.	QTY	DRAWING NO.	PART NO.	DESCRIPTION	NOTE / MAT'L
6	1	S-1001-2022		CAPACITANCE TAP ASSEMBLY	ALUMINUM
5	1	S-3692-2417-0		CAP	COPPER
4	1	S-5948-5533		ROD ASSEMBLY	COPPER
3	1	S-5948-5532		SHIELD ASSEMBLY	COPPER
2	1	S-5948-5531		FLANGE	ALUMINUM
1	1	S-5948-5530	-001	CASTING, CYCLOALIPHATIC RESIN	EC-APG-02

PARTS LIST					
GENERAL TOLERANCES (UNLESS OTHERWISE SPECIFIED)		X. ±0.125 .X ±0.094 .XX ±0.063 .XXX ±0.031 ANGLES ±0.25° RADIUS ±0.031		Electro Composites solid HV bushings solution	
REMOVE BURRS AND BREAK SHARP EDGES DIMENSIONS ARE IN INCHES (UNLESS OTHERWISE SPECIFIED)		TITLE: SDC® BUSHING 15kV, 3000A MODEL: 110-030-T-477-00		DRAWN BY: J. CLICHE DATE: 2009/09/10	
PROJECT NO.: PROJECT MANAGER:		CHECK BY: PROJECT ENG.:		FORMAT: A CAGE CODE: DRAWING NO.: S-5948-5530 REVISION: A	
SCALE: 1:4				GENERATED BY: SolidWorks 2021 SHEET: 1 of 1	