

NOTES:

- 1 CREEPAGE DISTANCE: 13.7" / 348mm
- 2 ARC DISTANCE: 6.7" / 170mm
- 3 NOMINAL VOLTAGE: 8.7kV
- 4 NOMINAL CURRENT: 800A
- 5 WITHSTAND VOLTAGE AT 60 sec.: 36kV
- 6 B.I.L. : 95kV
- 7 ROUTINE TEST ACCORDING TO: IEEE C57.19.01
- 8 MAX. TORQUE APPLIED ON FLANGE BOLTS: 40 lbf x ft/ 54.2 k.N
- 9 WEIGHT: 20 lbs / 9.01 Kg

REVISIONS					
ZONE	REV.	DESCRIPTION	DRAWN BY	DATE	APPR.
	A	MODIFY FLANGE, MODIFY LENGTH	J.N.PILOTTE	2012-02-15	Y.V.

F

F

E

E

D

D

C

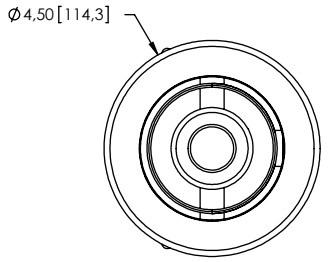
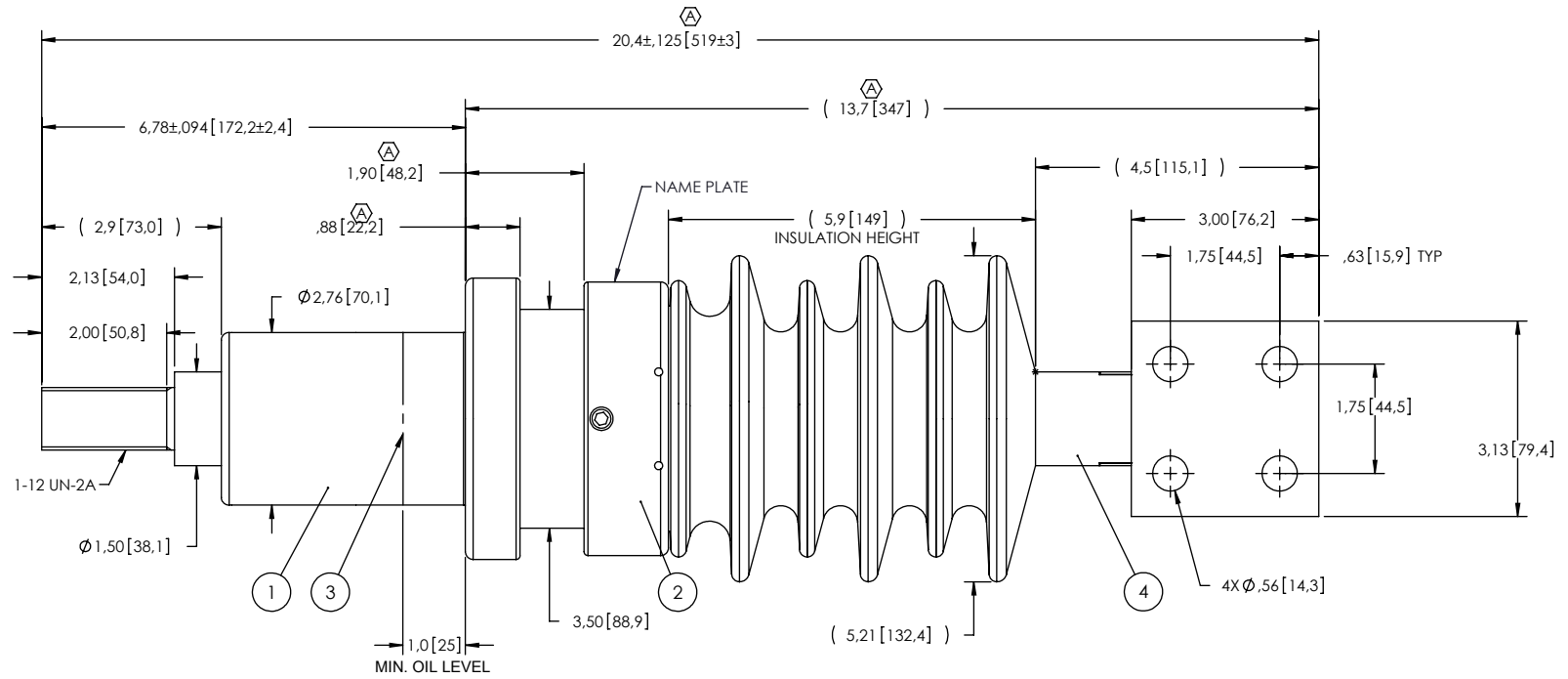
C

B

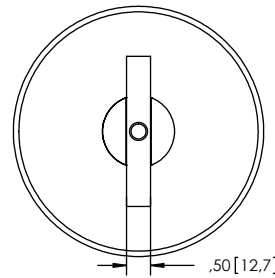
B

A

A



VIEW A-A



VIEW B-B

ITEM NO.	QTE	DRAWING NO.	PART NO.	DESCRIPTION	NOTE / MATL
4	1	S-6992-6641		ROD ASSEMBLY	COPPER
3	1	S-6992-6640		SHIELD ASSEMBLY	COPPER
2	1	S-6992-6639		FLANGE	6061-T6
1	1	S-6992-6638	-001	CASTING, CYCLOALIPHATIC RESIN	EC-APG-02

PARTS LIST

GENERAL TOLERANCES
(UNLESS OTHERWISE SPECIFIED)

X. ±0.125
.X ±0.094
.XX ±0.063
.XXX ±0.031
ANGLES ±0.25°
RADIUS ±0.031

REMOVE BURRS AND
BREAK SHARP EDGES

DIMENSIONS ARE IN
INCHES
(UNLESS OTHERWISE SPECIFIED)

DRAWN BY: J.N.PILOTTE DATE: 2011/06/17

CHECK BY:

PROJECT ENG.:

PROJECT MANAGER:

TITLE: BUSHING 8.7kV, 800A
MODEL:095-008-T-491-01

FORMAT: A CAGE CODE: S- 6992-6638 DRAWING NO.: A REVISION: A

SCALE: 1:4 GENERATED BY: SolidWorks 2009 SHEET: 1 of 1

This drawing is the proprietary property of Electro Composites (2008) ULC, not part of the public domain, and is issued with the express understanding and agreement that it is not to be reproduced or copied in whole or in part or issued for furnishing information to others, or used directly or indirectly, in any way detrimental to the interest of Electro Composites (2008) ULC and is to be returned upon request by Electro Composites (2008) ULC. All Rights Reserved.