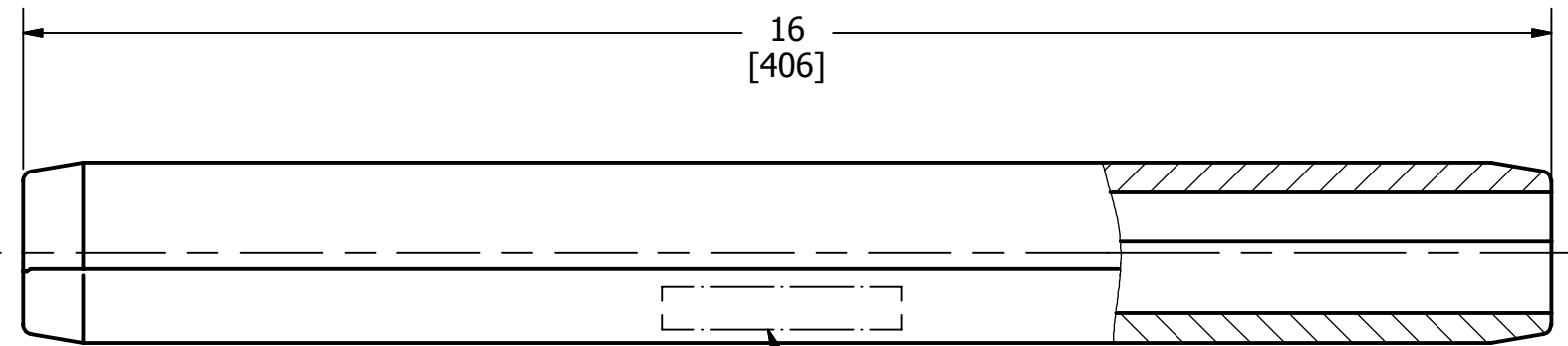
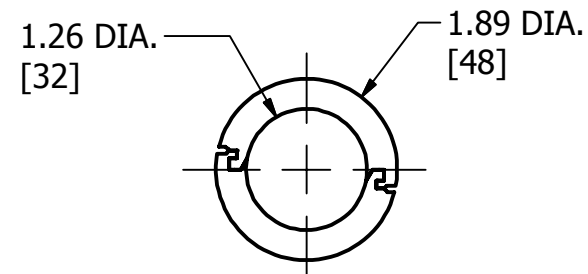


\*\*\* COMPONENT'S LIST \*\*\*

PT NO.	ITEM NUMBER	CATALOG NO.	QTY	DESCRIPTION
1	10095715	PVRSIV	2	I_RS AL.MAIN SUB - ASSY

REV	DATE	DESCRIPTION	ECO	BY	C'H'K.
C	11/04/2014	DRAWING RELEASED	38272	MRA	KV



IMPLO® RS-IV  
 YY - Z - XXX  
 (YY - YEAR OF PRODUCTION  
 Z - MANUFACTURER'S SYMBOL  
 XXX - PRODUCTION #)

NOTES:

- DIMENSIONS IN BRACKETS [ ] ARE IN MILLIMETERS ROUNDED OFF TO THE NEAREST MILLIMETER, UNLESS OTHERWISE SPECIFIED AND ARE FOR REFERENCE ONLY.
- THIS FITTING WILL FIT THE FOLLOWING CONDUCTORS:
  - ACSR RUDY 900 kcmil, 45/7.
  - ACSR RAIL 954 kcmil, 45/7.
  - AACSR 926.7 kcmil, 26/7.
  - ACSR 926.7 kcmil, 26/7.

TO ORDER BURNDY PRODUCTS CALL		IMPLO® REPAIR SLEEVE ASSEMBLY	
UNITED STATES		ITEM NO: 10095727	
1-800-346-4175 (LONDONDERRY, NH)		CAT. NO: 9059	
CANADA:		DRAWN BY: vsubramanian 9/12/2014	
1-800-361-6975 (QUEBEC)		CHECKER: V HOXHA 11/3/2014	
1-800-387-6487 (ALL OTHER PROVINCES)		DSN APRVL: G GORJA 11/3/2014	
FOR PRODUCT INFO: <a href="http://www.burndy.com">http://www.burndy.com</a>		MFG APRVL: J ENG 11/4/2014	
		QA APRVL: V HOXHA 11/3/2014	
		MKT APRVL: --	
PROD FAM: TRANSMISSION	DRAWING NO	REV	
PROJECT #: --	SIZE	50000547	
DOCUMENT TYPE: SALES		C	
REL LEVEL: Released	B	SHEET 1 OF 1	