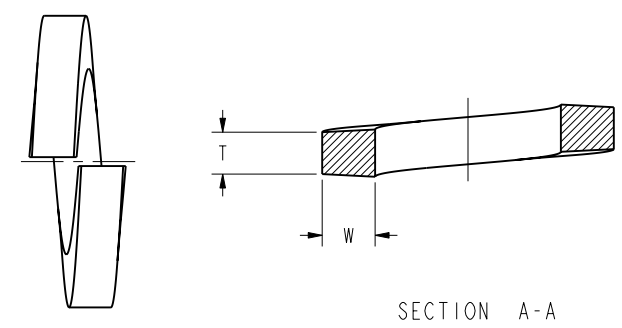
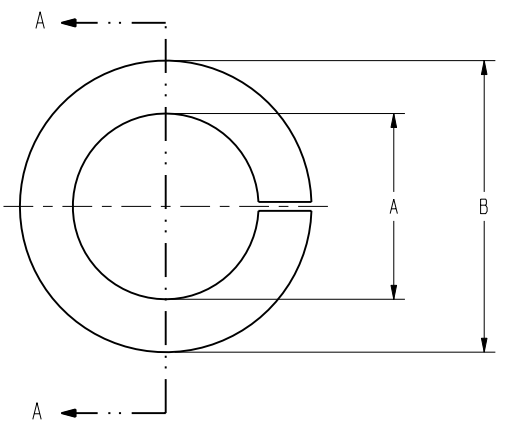


REV	DATE	DESCRIPTION	ECO	BY	C'H'K.
A	05/08/2012 00:00:00 AM	SALES DRAWING CREATED	27459	BT	MA

TABLE FOR DIMENSIONS OF REGULAR HELICAL SPRING LOCK WASHERS

NOMINAL WASHER SIZE	A		B	T	W	CATALOG NUMBER				
	INSIDE DIAMETER		OUTSIDE DIAMETER	MEAN SECTION THICKNESS	SECTION WIDTH	SILICON BRONZE	ALUMINUM	GALVANIZED STEEL	STAINLESS STEEL	
	MAX	MIN	MAX <sup>2</sup>	MIN	MIN					
1/4	0.250 [6]	0.262 [7]	0.254 [6]	0.489 [12]	0.062 [2]	0.109 [3]	25SW	25SWAL	25SGSWMD	25SWSSMD
5/16	0.312 [8]	0.326 [8]	0.317 [8]	0.586 [15]	0.078 [2]	0.125 [3]	31SW	31SWAL	31SGSWMD	31SWSSMD
3/8	0.375 [10]	0.390 [10]	0.380 [10]	0.683 [17]	0.094 [2]	0.141 [4]	38SW	38SWAL	38SGSWMD	38SWSSMD
7/16	0.438 [11]	0.455 [12]	0.443 [11]	0.779 [20]	0.109 [3]	0.156 [4]	44SW	44SWAL	44SGSWMD	44SWSSMD
1/2	0.500 [13]	0.518 [13]	0.506 [13]	0.873 [22]	0.125 [3]	0.171 [4]	50SW	50SWAL	50SGSWMD	50SWSSMD
9/16	0.562 [14]	0.582 [15]	0.570 [14]	0.971 [25]	0.141 [4]	0.188 [5]	56SW	56SWAL	56SGSWMD	56SWSSMD
5/8	0.625 [16]	0.650 [17]	0.635 [16]	1.079 [27]	0.156 [4]	0.203 [5]	62SW	62SWAL	62SGSWMD	62SWSSMD
11/16	0.688 [17]	0.713 [18]	0.698 [18]	1.176 [30]	0.172 [4]	0.219 [6]	69SW	69SWAL	69SGSWMD	69SWSSMD
3/4	0.750 [19]	0.775 [20]	0.760 [19]	1.271 [32]	0.188 [5]	0.234 [6]	75SW	75SWAL	75SGSWMD	75SWSSMD
13/16	0.812 [21]	0.843 [21]	0.824 [21]	1.367 [35]	0.203 [5]	0.250 [6]	81SW	81SWAL	81SGSWMD	81SWSSMD
7/8	0.875 [22]	0.905 [23]	0.887 [23]	1.464 [37]	0.219 [6]	0.266 [7]	88SW	88SWAL	88SGSWMD	88SWSSMD
15/16	0.938 [24]	0.970 [25]	0.950 [24]	1.560 [40]	0.234 [6]	0.281 [7]	94SW	94SWAL	94SGSWMD	94SWSSMD
1	1.000 [25]	1.042 [26]	1.017 [26]	1.661 [42]	0.250 [6]	0.297 [8]	100SW	100SWAL	100SGSWMD	100SWSSMD
1-1/16	1.062 [27]	1.107 [28]	1.080 [27]	1.756 [45]	0.266 [7]	0.312 [8]	106SW	106SWAL	106SGSWMD	106SWSSMD
1-1/8	1.125 [29]	1.172 [30]	1.144 [29]	1.853 [47]	0.281 [7]	0.328 [8]	112SW	112SWAL	112SGSWMD	112SWSSMD
1-3/16	1.188 [30]	1.237 [31]	1.208 [31]	1.950 [50]	0.297 [8]	0.344 [9]	119SW	119SWAL	119SGSWMD	119SWSSMD
1-1/4	1.250 [32]	1.302 [33]	1.271 [32]	2.045 [52]	0.312 [8]	0.359 [9]	125SW	125SWAL	125SGSWMD	125SWSSMD
1-5/16	1.312 [33]	1.366 [35]	1.334 [34]	2.141 [54]	0.328 [8]	0.375 [10]	131SW	131SWAL	131SGSWMD	131SWSSMD
1-3/8	1.375 [35]	1.432 [36]	1.398 [36]	2.239 [57]	0.344 [9]	0.391 [10]	138SW	138SWAL	138SGSWMD	138SWSSMD
1-7/16	1.438 [37]	1.497 [38]	1.462 [37]	2.334 [59]	0.359 [9]	0.406 [10]	144SW	144SWAL	144SGSWMD	144SWSSMD
1-1/2	1.500 [38]	1.561 [40]	1.525 [39]	2.430 [62]	0.375 [10]	0.422 [11]	150SW	150SWAL	150SGSWMD	150SWSSMD



- NOTES:
1. THESE LOCKWASHERS ARE IN ACCORDANCE WITH ASME B18.21.1
  2. DIMENSIONS IN BRACKETS [ ] ARE IN MILLIMETERS ROUNDED OFF TO THE NEAREST MILLIMETER UNLESS OTHERWISE SPECIFIED, AND ARE FOR REFERENCE ONLY.

TO ORDER BURNDY® PRODUCTS CALL		REGULAR HELICAL SPRING LOCK WASHERS	
UNITED STATES		ITEM NO: --	
1-800-346-4175 (LONDONDERRY, NH)		CAT. NO: --SW, --SWAL, --SGSWMD, --SWSSMD	
CANADA:		DRAWN BY: BALAN, T 5/08/12	
1-800-361-6975 (QUEBEC)		CHECKER: S.DAVID 5/09/12	
1-800-387-6487 (ALL OTHER PROVINCES)		DSN APPVL: S.DAVID 5/09/12	
FOR PRODUCT INFO: <a href="http://www.burndy.com">http://www.burndy.com</a>		MFG APPVL: K.GILBERT 5/09/12	
		QA APPVL: H.JAMES 5/15/12	
		MKT APPVL: --	SCALE: 2:1
PROD FAM: SUBSTATION	DRAWING NO	REV	
PROJECT #: --	SIZE	50001452	A
DOCUMENT TYPE: Sales	D	SHEET 1 OF 1	
REL LEVEL: Released			

REV: PE0200