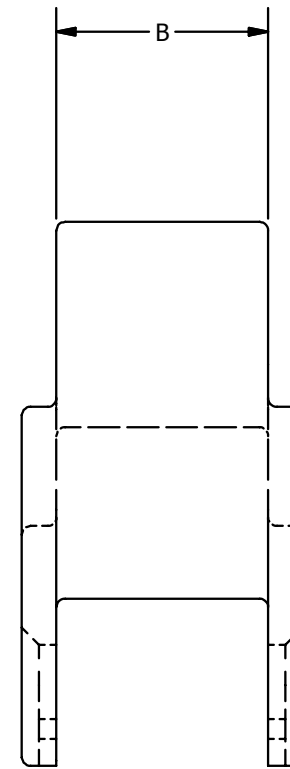
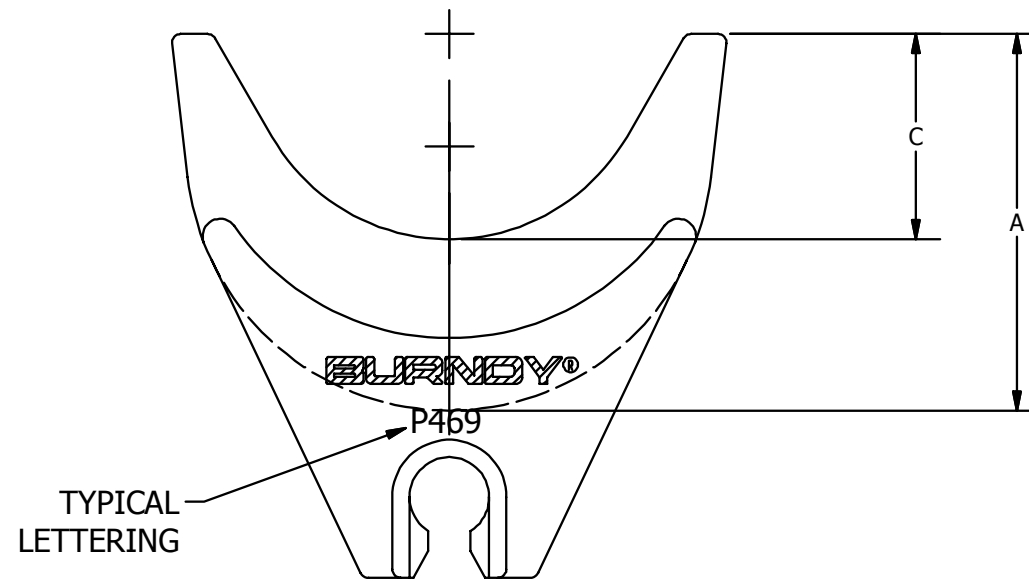


| CATALOG NUMBER | DIMENSION    |             |             | INDEX NO.<br>(REF.) |
|----------------|--------------|-------------|-------------|---------------------|
|                | A            | B           | C           |                     |
| P469           | 1.31<br>[33] | .74<br>[19] | .71<br>[18] | 469                 |
| P342           | 1.31<br>[33] | .74<br>[19] | .76<br>[19] | 342                 |
| P608           | 1.31<br>[33] | .50<br>[13] | .66<br>[17] | 608                 |
| P667           | 1.31<br>[33] | .74<br>[19] | .75<br>[19] | 667                 |

| REV | DATE       | DESCRIPTION               | ECO   | BY  | C'H'K. |
|-----|------------|---------------------------|-------|-----|--------|
| A   | 01/10/2013 | NEW SALES DRAWING RELEASE | 28762 | JSR | DD     |



**NOTES:**

1. MATERIAL: STAINLESS STEEL.
2. DIMENSIONS IN BRACKETS [ ] ARE IN MILLIMETERS ROUNDED OFF TO THE NEAREST MILLIMETER, UNLESS OTHERWISE SPECIFIED AND ARE FOR REFERENCE ONLY.

|                                                                             |  |                                  |  |
|-----------------------------------------------------------------------------|--|----------------------------------|--|
| TO ORDER BURNDY® PRODUCTS CALL                                              |  | RADIAL BUTTING TWIN DIE          |  |
| UNITED STATES<br>1-800-346-4175 (LONDONDERRY, NH)                           |  | ITEM NO: N/A                     |  |
| CANADA:<br>1-800-361-6975 (QUEBEC)<br>1-800-387-6487 (ALL OTHER PROVINCES)  |  | CAT. NO: SEE TABLE               |  |
| FOR PRODUCT INFO: <a href="http://www.burndy.com">http://www.burndy.com</a> |  | DRAWN BY: SRAMESH 01/10/2013     |  |
|                                                                             |  | CHECKER: MANIKANDAN B 01/10/2013 |  |
|                                                                             |  | DSN APRVL: P WASON 02/07/2013    |  |
|                                                                             |  | MFG APRVL: --                    |  |
|                                                                             |  | QA APRVL: J BRODEUR 02/01/2013   |  |
|                                                                             |  | MKT APRVL: R POIRIER 04/03/2013  |  |
|                                                                             |  | PROD FAM: --                     |  |
|                                                                             |  | DRAWING NO                       |  |
|                                                                             |  | 50009294                         |  |
|                                                                             |  | REV                              |  |
|                                                                             |  | A                                |  |
|                                                                             |  | SHEET 1 OF 1                     |  |