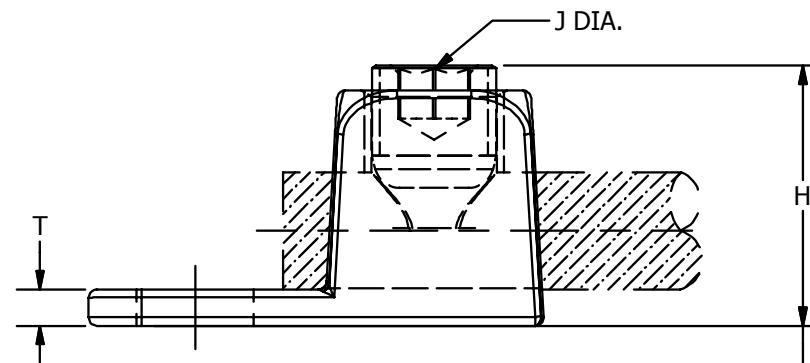
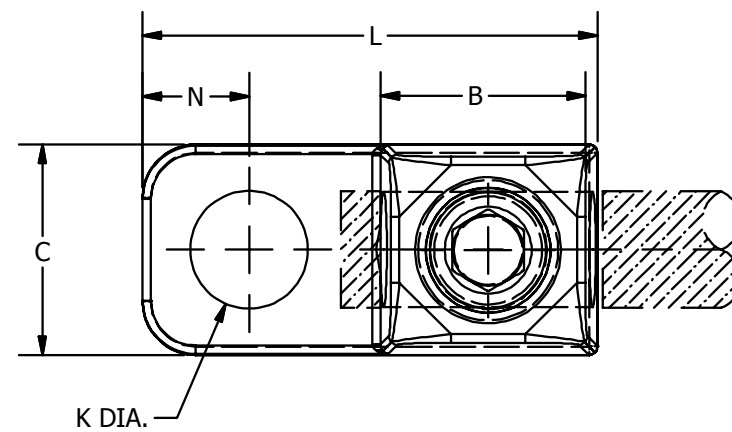


CATALOG NO.	CONDUCTOR RANGE COPPER CABLE		B	C	H	J DIA.	K DIA.	L	N	T	TORQUE in/lb [NM]
	MIN.	MAX.									
GKA25	# 4 STR. (.232 [6] DIA.)	1/0 STR. (.373 [9] DIA.)	.69 [18]	.75 [19]	.94 [24]	1/2" - 20 UNF -2A	.42 [11]	1.69 [43]	.38 [10]	.13 [3]	200 [23]
GKA28	# 1 STR. (.332 [8] DIA.)	4/0 STR. (.528 [13] DIA.)	.81 [21]	.94 [24]	1.25 [32]	5/8" - 18 UNF-2A	.42 [11]	1.94 [49]	.44 [5]	.19 [5]	275 [31]

REV	DATE	DESCRIPTION	ECO	BY	C'H'K.
C	03/20/2014	UPDATED AS PER THE MARKUP	35390	DK	MA



WITH MAX. CONDUCTOR
IN PLACE BEFORE
COMPRESSION APPROX.

NOTES:

1. MATERIAL: BODY - CAST COPPER ALLOY
SCREW - STAINLESS STEEL.
2. DIMENSIONS IN BRACKETS [] ARE IN MILLIMETERS ROUNDED OFF TO THE NEAREST MILLIMETER, UNLESS OTHERWISE SPECIFIED AND ARE FOR REFERENCE ONLY.
3. ADD SUFFIX "TN" FOR TIN PLATE BODY.
4. UL LISTED TO 486 A/B AND UL 467 GROUNDING AND BONDING.

TO ORDER BURNDY® PRODUCTS CALL		KA-LUG™	
UNITED STATES 1-800-346-4175 (LONDONDERRY, NH)		ITEM NO: N/A	
CANADA: 1-800-361-6975 (QUEBEC) 1-800-387-6487 (ALL OTHER PROVINCES)		CAT. NO: GKA25, GKA28	
FOR PRODUCT INFO: http://www.burndy.com		DRAWN BY: VKAMAL 12/10/2012 CHECKER: D SPURRELL 2/5/2013 DSN APRVL: D SPURRELL 2/5/2013 MFG APRVL: QA APRVL: J MEDINA 2/6/2013 MKT APRVL: P THERRIEN 2/5/2013 PROD FAM: CM&R MECHANICAL	
PROJECT #:	SIZE	DRAWING NO	
DOCUMENT TYPE: SALES	B	50016163	C
REL LEVEL: Released		SHEET 1 OF 1	