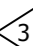
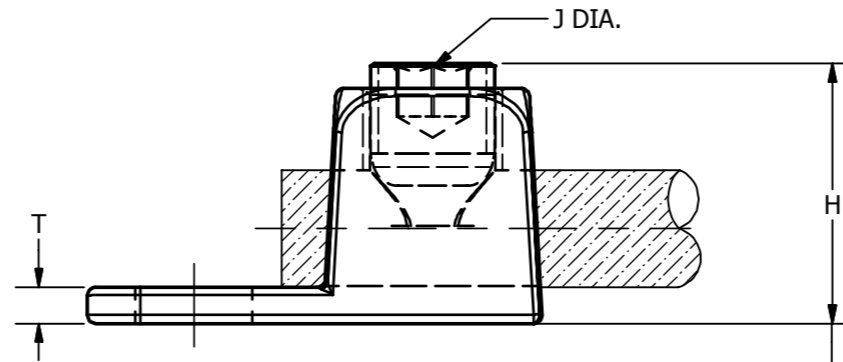
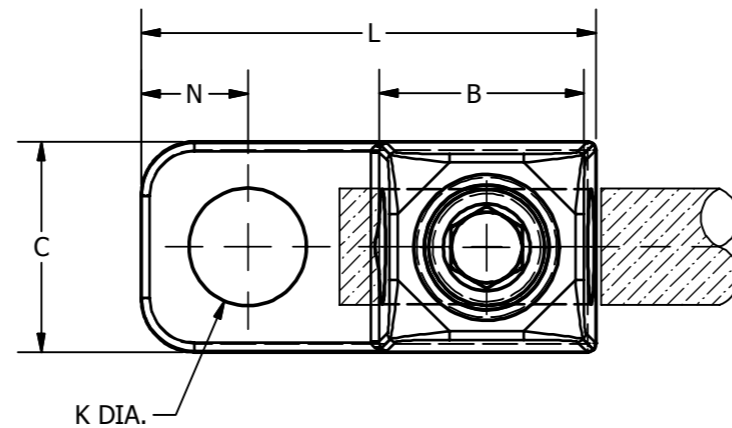


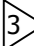
CATALOG NO. 	CONDUCTOR RANGE COPPER CABLE		B	C	H	J DIA.	K DIA.	L	N	T	TORQUE in/lb [NM]
	MIN.	MAX.									
GKA25SB	# 4 STR. (.232 DIA.)	1/0 STR. (.373 DIA.)	0.69 [18]	0.75 [19]	0.94 [24]	1/2" - 20 UNF -2A	0.42 [11]	1.69 [43]	0.38 [10]	0.13 [3]	200 [23]
GKA28SB	# 1 STR. (.332 DIA.)	4/0 STR. (.528 DIA.)	0.81 [21]	0.94 [24]	1.25 [32]	5/8" - 18 UNF-2A	0.42 [11]	1.94 [49]	0.44 [5]	0.19 [5]	275 [31]

REV	DATE	DESCRIPTION	ECO	BY	CH'K.
A	01/10/2013	NEW SALES DRAWING FOR GKA25SB & GKA28SB	30007	PB	MA



WITH MAX. CONDUCTOR
IN PLACE BEFORE
COMPRESSION APPROX.

NOTES:

- MATERIAL: CAST COPPER ALLOY
SCREW SILICON BRONZE
- DIMENSIONS IN BRACKETS [] ARE IN MILLIMETERS ROUNDED OFF TO THE NEAREST MILLIMETER, UNLESS OTHERWISE SPECIFIED AND ARE FOR REFERENCE ONLY.
-  ADD SUFFIX "TN" FOR TIN PLATE BODY.
- UL LISTED TO 486 A/B AND UL 467 GROUNDING AND BONDING.

TO ORDER BURNDY® PRODUCTS CALL		KA-LUG™	
UNITED STATES 1-800-346-4175 (LONDONDERRY, NH)		ITEM NO: N/A	
CANADA: 1-800-361-6975 (QUEBEC) 1-800-387-6487 (ALL OTHER PROVINCES)		CAT. NO: GKA25SB, GKA28SB	
FOR PRODUCT INFO: http://www.burndy.com		DRAWN BY: PARTHIBAN B 1/10/2013	
		CHECKER: D SPURRELL 2/5/2013	
		DSN APRVL: D SPURRELL 2/5/2013	
		MFG APRVL:	
		QA APRVL: A PINEDA 2/7/2013	
		MKT APRVL: P THERRIEN 2/5/2013	
		PROJ FAM: CM&R MECHANICAL	DRAWING NO
		PROJECT #:	50017297
		DOCUMENT TYPE: SALES	REV
		REL LEVEL: Released	A
		SIZE: B	SHEET 1 OF 1