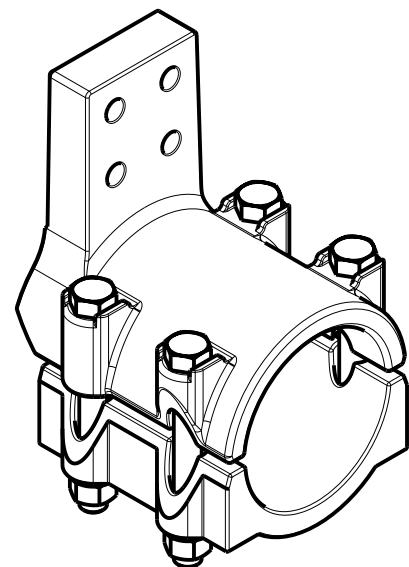
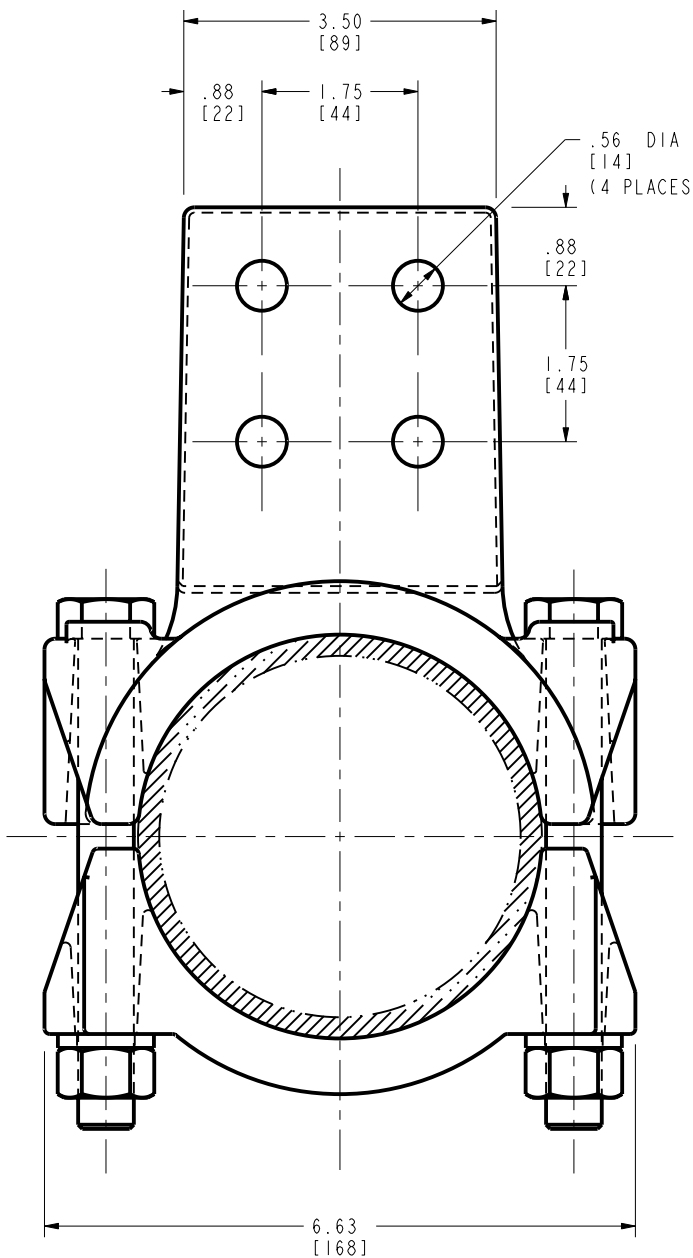
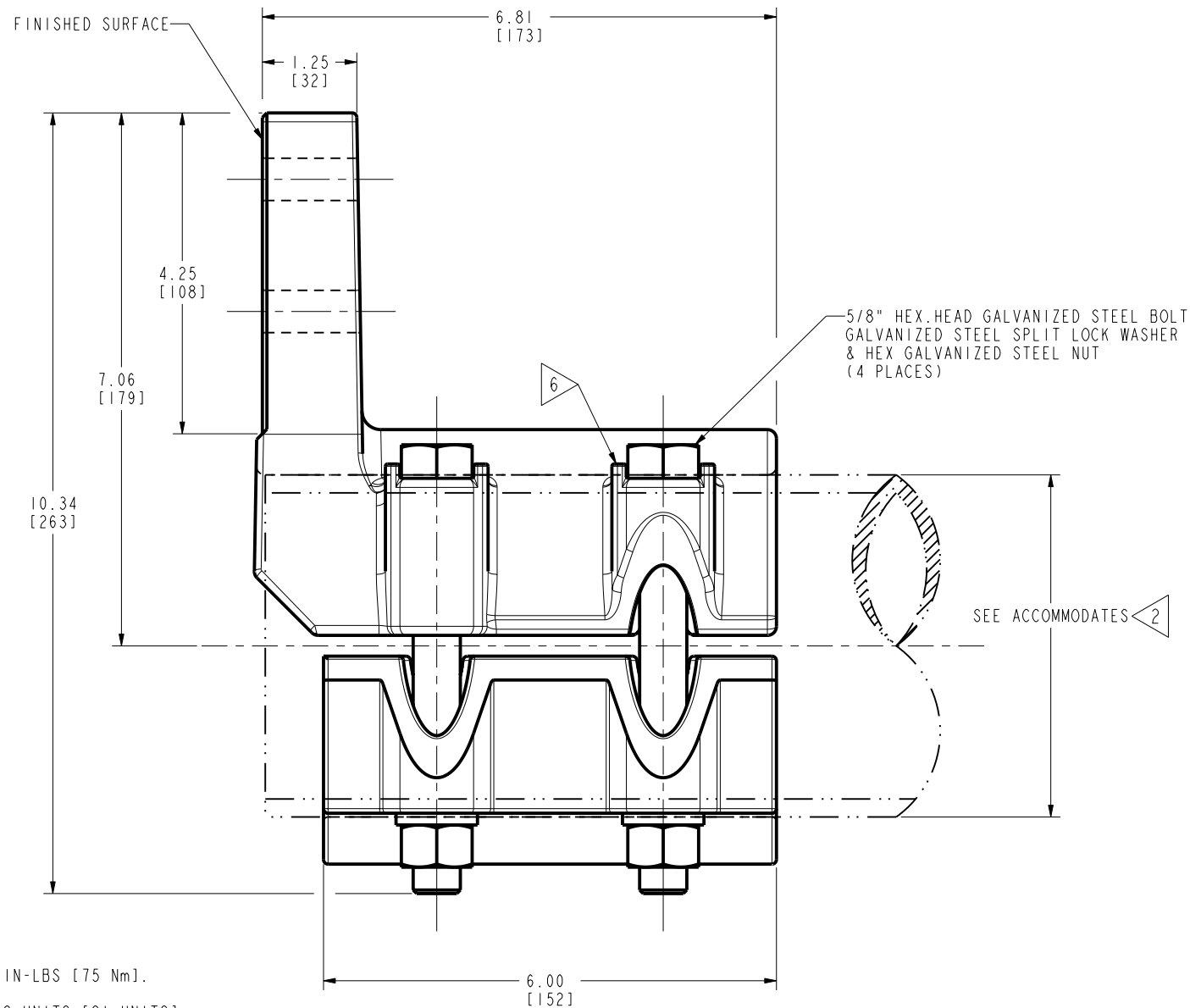


DRAWING NO.
50017924

REV	DATE	DESCRIPTION	ECO	BY	C'H'K.
A	03/14/2013 00:00:00 AM	PROVIDE A COMPLETE SET OF PRODUCTION DRAWINGS AND BOM IN AGILE FOR ITEM 27020094 (NA22ACG4).	30898	MK	TW



3D VIEW



NOTES:

- 1 MATERIAL:
BODY & CAP: CAST ALUMINUM ALLOY
- 2 ACCOMMODATES:
4" IPS (4.500 [114] DIA) ALUMINUM TUBE
- 3 NOMINAL BOLT INSTALLATION TORQUE:
5/8" HEX. GALVANIZED STEEL HARDWARE 660 IN-LBS [75 Nm].
- 4 DIMENSIONS IN BRACKETS [] DENOTES METRIC UNITS [SI UNITS] AND ARE ROUNDED TO THE NEAREST WHOLE NUMBER. UNLESS OTHERWISE SPECIFIED THESE UNITS SHALL BE USED FOR REFERENCE ONLY.
- 5 SCRATCH BRUSH CONNECTOR CONTACT SURFACE DRY, THEN APPLY PENETROX™ A. PENETROX™ CAN BE PURCHASED FROM BURNDY LLC, IN CANS OR PLASTIC SQUEEZE BOTTLES.
- 6 HEX BOLTS CAPTURED TO PREVENT TURNING DURING INSTALLATION.
- 7 MARKING:
BURNDY
NA22ACG4
4" IPS ALUMINUM

REV: PEO200

TO ORDER BURNDY® PRODUCTS CALL UNITED STATES 1-800-346-4175 (LONDONDERRY, NH) CANADA: 1-800-361-6975 (QUEBEC) 1-800-387-6487 (ALL OTHER PROVINCES) FOR PRODUCT INFO: http://www.burndy.com		TERMINAL	
		ITEM NO: 27020094	CAT. NO: NA22ACG4
DRAWN BY: M KATHIR	04/03/13		
CHECKER: R LAVOIE	04/10/13		
DSN APPVL: R LAVOIE	04/10/13		
MFG APPVL: --	--		
QA APPVL: J HILLMAN	04/05/13	SCALE: 1:1	
MKT APPVL: V TORRES	04/13/13	PROJ. NO: --	SIZE: D
PROJ. NO: --	SIZE: D	DRAWING NO: 50017924	REV: A
DOCUMENT TYPE: Sales	REL LEVEL: Released	SHEET 1 OF 1	