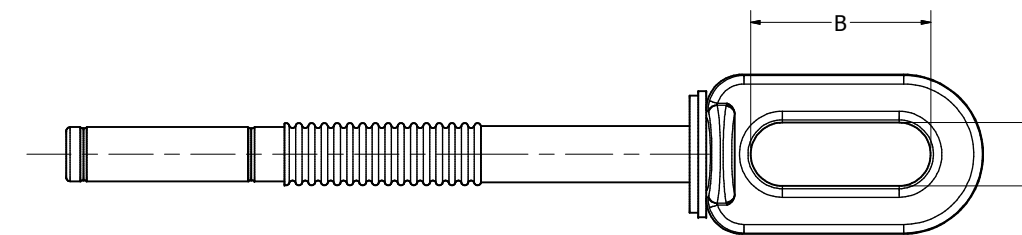
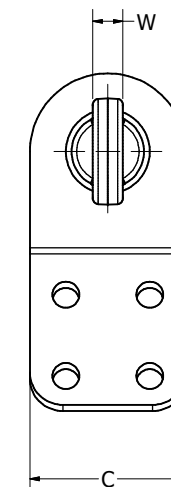
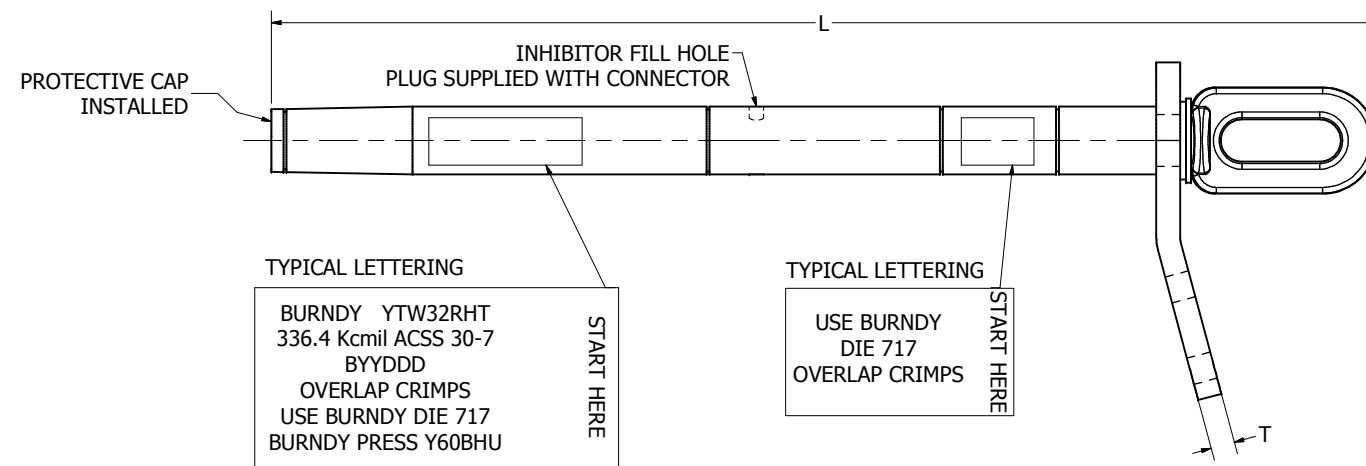


REV	DATE	DESCRIPTION	ECO	BY	C'H'K.
B	04/04/2013	CORRECTED THE LENGTH OF DEADEND "L"	31158	SP	PW



BURNDY FULL TENSION ACSS DEAD END KITS, SINGLE PAD,NO TERMINAL																	
ACSS CONDUCTORS				DEAD END KIT, SINGLE PAD, NO TERMINAL		KITS CONTAINS (REFERENCE SALES DRAWINGS, INSTALLATION TOOLING NOT INCLUDED)											
ACSS CONDUCTOR CODE NAME	SIZE Kcmil	STRANDING	CONDUCTOR O.D. INCHES[MM]	KIT CATALOG NUMBER	KIT ITEM NUMBER	ALUMINUM BODY ASSEMBLY (QTY 1)						EYE (QTY 1)					
						CATALOG NUMBER	L INCHES [MM]	C INCHES [MM]	T INCHES [MM]	TOOLING		CATALOG NUMBER	B INCHES [MM]	K INCHES [MM]	W INCHES [MM]	TOOLING	
										DIE INDEX	Y60BHU DIE					DIE INDEX	Y60BHU DIE
LINNET	336.4	26/7	0.720 [18]	YTW32R34REKHTNT	50018277	YTW32RHT	21.25 [540]	3.25 [83]	0.50 [13]	717	L717	YTW34REHT	2.50 [64]	0.88 [22]	0.62 [16]	718	L718
ORIOLE	336.4	30/7	0.741 [19]	YTW32R33REKHTNT	50018278	YTW32RHT	21.25 [540]	3.25 [83]	0.50 [13]	717	L717	YTW33REHT	2.50 [64]	0.88 [22]	0.62 [16]	718	L718
IBIS	397.5	26/7	0.783 [20]	YTW34R34REKHTNT	50019095	YTW34RHT	21.21 [539]	3.25 [83]	0.50 [13]	719	L719	YTW34REHT	2.50 [64]	0.88 [22]	0.62 [16]	718	L718
FLICKER	477	24/7	0.846 [21]	YTW36R362REKHTNT	50019096	YTW36RHT	23.53 [598]	3.25 [83]	0.50 [13]	720	L720	YTW362REHT	2.50 [64]	0.88 [22]	0.62 [16]	721	L721
HAWK	477	26/7	0.858 [22]	YTW36R36REKHTNT	10100117	YTW36RHT	23.53 [598]	3.25 [83]	0.50 [13]	720	L720	YTW36REHT	2.50 [64]	0.88 [22]	0.62 [16]	721	L721
PARAKEET	556.5	24/7	0.914 [23]	YTW39R43REKHTNT	50019097	YTW39RHT	23.19 [589]	3.25 [83]	0.50 [13]	722	L722	YTW43REHT	2.50 [64]	0.88 [22]	0.69 [18]	723	L723
DOVE	556.5	26/7	0.927 [24]	YTW39R43REKHTNT	50019097	YTW39RHT	23.19 [589]	3.25 [83]	0.50 [13]	722	L722	YTW43REHT	2.50 [64]	0.88 [22]	0.69 [18]	723	L723
PEACOCK	605	24/7	0.953 [24]	YTW43R43REKHTNT	50019098	YTW43RHT	24.04 [611]	3.25 [83]	0.50 [13]	724	L724	YTW43REHT	2.50 [64]	0.88 [22]	0.69 [18]	723	L723
SQUAB	605	26/7	0.966 [25]	YTW43R43REKHTNT	50019098	YTW43RHT	24.04 [611]	3.25 [83]	0.50 [13]	724	L724	YTW43REHT	2.50 [64]	0.88 [22]	0.69 [18]	723	L723
ROOK	636	24/7	0.977 [25]	YTW43R43REKHTNT	50019098	YTW43RHT	24.04 [611]	3.25 [83]	0.50 [13]	724	L724	YTW43REHT	2.50 [64]	0.88 [22]	0.69 [18]	723	L723
GROSBEAK	636	26/7	0.991 [25]	YTW43R43REKHTNT	50019098	YTW43RHT	24.04 [611]	3.25 [83]	0.50 [13]	724	L724	YTW43REHT	2.50 [64]	0.88 [22]	0.69 [18]	723	L723
FLAMINGO	666.6	24/7	1.000 [25]	YTW43R43REKHTNT	50019098	YTW43RHT	24.04 [611]	3.25 [83]	0.50 [13]	724	L724	YTW43REHT	2.50 [64]	0.88 [22]	0.69 [18]	723	L723

NOTES:

- MATERIAL:
EYE ASSEMBLY: STEEL ALLOY, GALVANIZED, WITH RUBBER GASKET.
CONNECTOR BODY(TUBE ASSEMBLY): ALUMINIUM ALLOY NO-OX-ID COATED.
- PENETROX™ HT IS REQUIRED FOR INSTALLATION. PENHT IS NOT INCLUDED IN THE KIT, AND IS PURCHASED SEPERATELY.
- INSTALLATION TOOLING IS NOT INCLUDED IN THE KIT, IS PURCHASED SEPERATELY.
- INSTALLATION INSTRUCTION IS DRAWING NO. 10104799 (FORM# 10104802)
- TENSILE STRENGTH MEETS ANSI 119.4-2004 CLASS 1 REQUIREMENTS.
- DESIGNED FOR CORONA FREE OPERATION UP TO 230KV WITHOUT ACCESSORIES.
- DIMENSIONS IN BRACKETS [] ARE METRIC UNITS [SI UNITS] AND ARE ROUNDED TO THE NEAREST WHOLE NUMBER. UNLESS OTHERWISE SPECIFIED THESE UNITS SHALL BE USED FOR REFERENCE ONLY.

TO ORDER BURNDY® PRODUCTS CALL		FULL TENSION ACSS DEADEND KITS,NO TERMINAL	
UNITED STATES 1-800-346-4175 (LONDONDERRY, NH)		ITEM NO: SEE TABLE	
CANADA: 1-800-361-6975 (QUEBEC) 1-800-387-6487 (ALL OTHER PROVINCES)		CAT. NO: SEE TABLE	
FOR PRODUCT INFO: http://www.burndy.com		DRAWN BY: S PANDIAN 2/7/2013	
		CHECKER: M MOHAN 2/8/2013	
		DSN APRVL: P WALTZ 4/10/2013	
		MFG APRVL: --	
		QA APRVL: C ACKERMAN 4/19/2013	
		MKT APRVL: D HAMILTON 4/11/2013	
		PROD FAM: TRANSMISSION	
		DRAWING NO	
		50018276	
		REV	
		B	
		SHEET 1 OF 1	