

REV	DATE	DESCRIPTION	ECO	BY	CHK.
D	07/02/2019	ADD YTS451R449RSHT	51700	MRA	NJ

VIEW BEFORE INSTALLATION

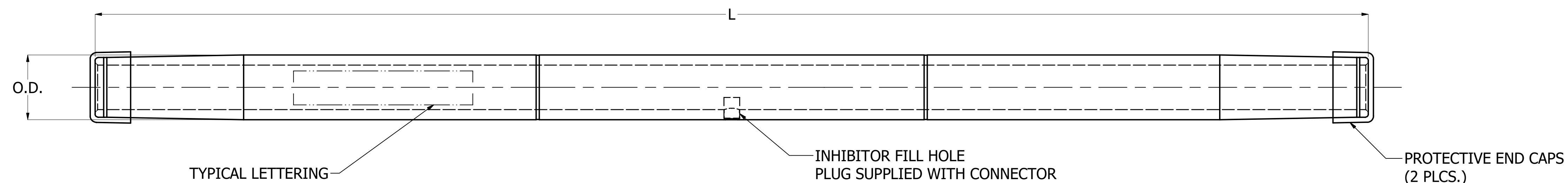


FIG. 1
ALUMINUM SLEEVE

DATE CODE

BURNDY®
HYSPLICE YTS34RHT
397.5 Kcmil ACSS
26-7 STR
BYDDDD
OVERLAP CRIMPS
USE BURNDY DIE 719
BURNDY PRESS Y60BHU

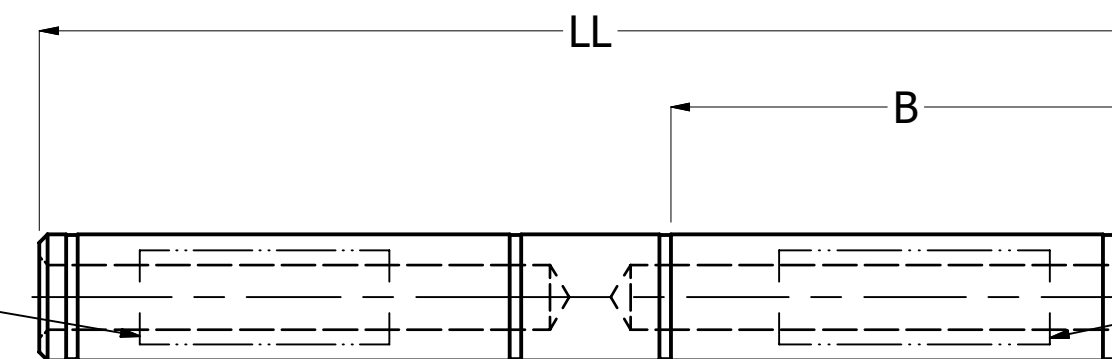


FIG. 2
STEEL SLEEVE

TYPICAL LETTERING

BURNDY® YTS34RS
FULL TENSION HYSPLICE
FOR STEEL CORE-ACSR, ACSS
397.5 (26-7)

START HERE

TYPICAL LETTERING

BYDDDD
OVERLAP CRIMPS
BURNDY DIE 718
BURNDY PRESS Y60BHU

START HERE

DATE CODE

BURNDY - FULL TENSION ACSS NON EHV SPLICE KITS

ACSS CONDUCTORS			SPLICE KITS		KIT CONTAINS (INSTALLATION TOOLING NOT INCLUDED)										
CONDUCTOR CODE NAME	Size Kcmil	STRANDING	CONDUCTOR O.D. INCHES [MM]	KIT CATALOG NUMBER	KIT ITEM NUMBER	ALUMINIUM SLEEVE (QTY 1)					STEEL SLEEVE (QTY 1)				
						CATALOG NUMBER	L INCHES [MM]	O.D. INCHES [MM]	TOOLING		CATALOG NUMBER	B INCHES [MM]	LL INCHES [MM]	TOOLING	
									DIE INDEX	Y60BHU				DIE INDEX	Y60BHU
LINNET	336.4	26/7	0.720 [18]	YTS32R34RSHT	10105997	YTS32RHT	25.30 [643]	1.19 [30]	717	L717	YTS34RS	2.64 [67]	5.25 [133]	718	L718
IBIS	397.5	26/7	0.783 [20]	YTS34R34RSHT	10112236	YTS34RHT	25.20 [640]	1.28 [33]	719	L719	YTS34RS	2.64 [67]	5.25 [133]	718	L718
FLICKER	477	24/7	0.846 [21]	YTS36R36RSHT	10103112	YTS36RHT	26.16 [664]	1.41 [36]	720	L720	YTS362RS	2.66 [68]	5.88 [149]	721	L721
HAWK	477	26/7	0.858 [22]	YTS36R36RSHT	10099342	YTS36RHT	26.16 [664]	1.41 [36]	720	L720	YTS36RS	2.66 [68]	5.88 [149]	721	L721
PARAKEET	556.5	24/7	0.914 [23]	YTS39R43RSHT	50018751	YTS39RHT	27.88 [708]	1.50 [38]	722	L722	YTS43RS	2.66 [68]	5.88 [149]	723	L723
DOVE	556.5	26/7	0.927 [24]	YTS39R43RSHT	50018751	YTS39RHT	27.88 [708]	1.50 [38]	722	L722	YTS43RS	2.66 [68]	5.88 [149]	723	L723
PEACOCK	605	24/7	0.953 [24]	YTS43R43RSHT	50018752	YTS43RHT	29.44 [748]	1.61 [41]	724	L724	YTS43RS	2.66 [68]	5.88 [149]	723	L723
SQUAB	605	26/7	0.966 [25]	YTS43R43RSHT	50018752	YTS43RHT	29.44 [748]	1.61 [41]	724	L724	YTS43RS	2.66 [68]	5.88 [149]	723	L723
ROOK	636	24/7	0.977 [25]	YTS43R43RSHT	50018752	YTS43RHT	29.44 [748]	1.61 [41]	724	L724	YTS43RS	2.66 [68]	5.88 [149]	723	L723
GROSBEAK	636	26/7	0.991 [25]	YTS43R43RSHT	50018752	YTS43RHT	29.44 [748]	1.61 [41]	724	L724	YTS43RS	2.66 [68]	5.88 [149]	723	L723
FLAMINGO	666.6	24/7	1.000 [25]	YTS43R43RSHT	50018752	YTS43RHT	29.44 [748]	1.61 [41]	724	L724	YTS43RS	2.66 [68]	5.88 [149]	723	L723
CROW	715.5	54/7	1.036 [26]	YTS451R449RSHT	30008802	YTS451RHT	30.96 [786]	1.80 [46]	725	L725	YTS449RS	4.00 [102]	9.00 [229]	726	L726
CUCKOO	795	24/7	1.092 [28]	YTS451R449RSHT	30008802	YTS451RHT	30.96 [786]	1.80 [46]	725	L725	YTS449RS	4.00 [102]	9.00 [229]	726	L726
CONDOR	795	54/7	1.093 [28]	YTS451R449RSHT	30008802	YTS451RHT	30.96 [786]	1.80 [46]	725	L725	YTS449RS	4.00 [102]	9.00 [229]	726	L726

NOTES:

- MATERIAL:
 - CONDUCTIVE MEMBER : ALUMINUM ALLOY SLEEVE
 - MECHANICAL MEMBER (CORE SPLICE): STEEL ALLOY SLEEVE
 - FILLER PLUG: ALUMINUM ALLOY
- DESIGNED FOR CORONA FREE OPERATION UP TO 230 KV.
- ASSEMBLED SPLICE TENSILE STRENGTH MEETS ANSI C119.4-2004, CLASS 1 REQUIREMENTS
- PENHT HIGH TEMPERATURE INHIBITOR IS NOT INCLUDED IN THE KIT AND IS PURCHASED SEPARATELY.
- TOOLING IS NOT INCLUDED IN THE KIT AND IS PURCHASED SEPARATELY.
- INSTALLATION INSTRUCTION: DRAWING NO. 10107794 (FORM10107793)

WIDE DIES MAY BE USED ON ALUMINUM ONLY (NO STEEL), ADD SUFFIX "W" TO DIE CATALOG NUMBER (EXAMPLE: L717W). L--W DIES HAVE A WIDER PLOW WIDTH THAN STANDARD L-DIES TO REDUCE THE NUMBER OF OVERLAPPING CRIMPS AND FEATURE EMBOSSED MARKS TO ASSIST IN OVERLAP CRIMP SPACING.

8. DIMENSIONS IN BRACKETS [] DENOTES METRIC UNITS [SI UNITS] AND ARE ROUNDED TO THE NEAREST WHOLE NUMBER, UNLESS OTHERWISE SPECIFIED THESE UNITS SHALL BE USED FOR REFERENCE ONLY.

TO ORDER BURNDY® PRODUCTS CALL UNITED STATES 1-800-346-4175 (LONDONDERRY, NH) CANADA: 1-800-361-6975 (QUEBEC) 1-800-387-6487 (ALL OTHER PROVINCES) FOR PRODUCT INFO: http://www.burndy.com	ACSS SPLICE KITS, NON EHV		
	ITEM NO: (SEE TABLE)		
	CAT. NO: (SEE TABLE)		
	DRAWN BY: M.RAMESH	01/30/2013	
	CHECKER: C.YORK	07/08/2019	
	DSN APRVL: C.YORK	07/08/2019	
	MFG APRVL: --		
	QA APRVL: B.ELLIOTT	07/03/2019	
	MKT APRVL: R.LOVELESS	02/20/2020	
	PROD FAM: TRANSMISSION		DRAWING NO
PROJECT #: --	SIZE	50018588	
DOCUMENT TYPE: SALES	D	SHEET 1 OF 1	
REL LEVEL: Released			