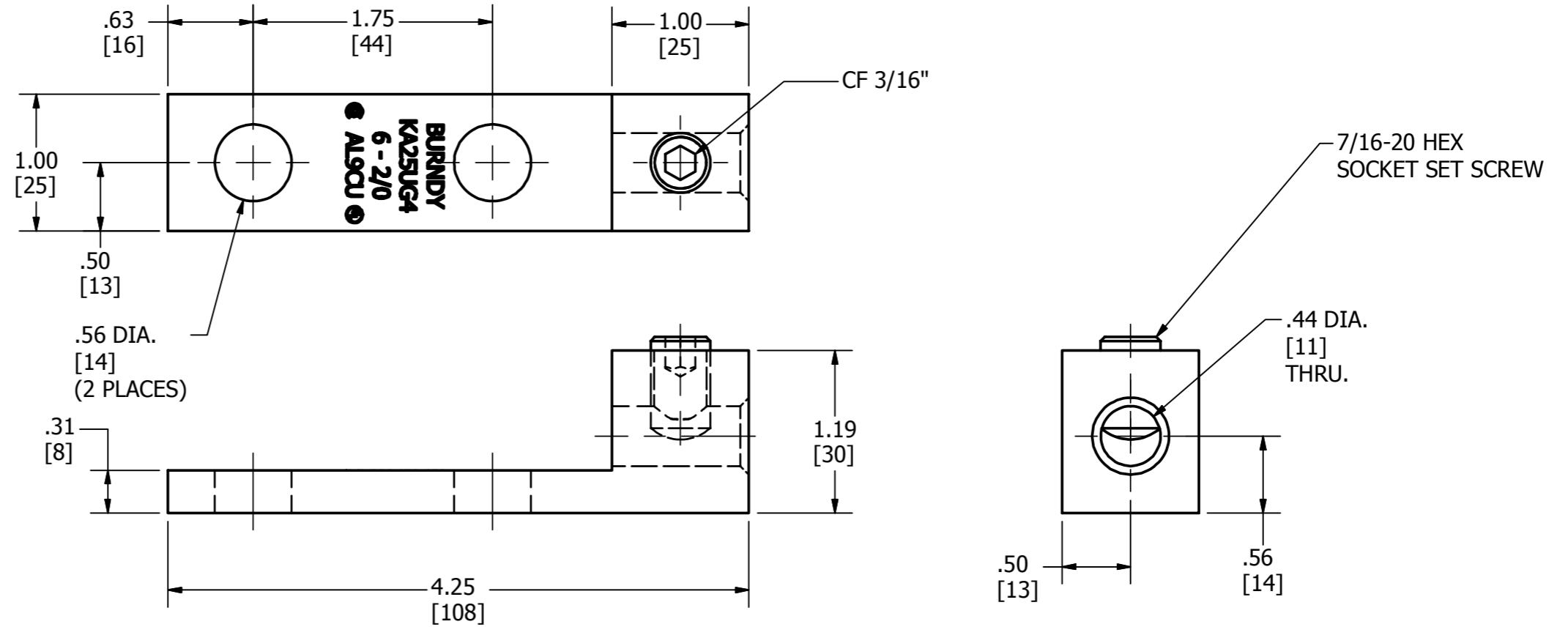


CAT. NO.	BOLT HOLE	TORQUE IN/LB
KA25UG4	1/2" [M12]	120 [14]

REV	DATE	DESCRIPTION	ECO	BY	C'H'K.
A	02/06/2013	SALES DRAWING CREATION	30333	YM	MB



NOTES:

- 1 MATERIAL - BODY: ALUMINUM
SCREW: ALUMINUM
- 2 FINISH: TIN PLATED
- 3 ACCOMMODATES: #6 STR. (.18 [5] DIA.) & 2/0 STR. (.41 [11] DIA.) AL OR CU
- 4 UL LISTED TO UL486A/B FOR ALUMINUM AND COPPER CONDUCTORS AT 90°C (AL9CU)
AND CSA CERTIFIED TO C22.2, NO.65.
- 5 DIMENSIONS IN BRACKETS [] ARE IN MILLIMETERS ROUNDED OFF TO THE
NEAREST MILLIMETER, UNLESS OTHERWISE SPECIFIED AND ARE FOR REFERENCE ONLY.
- 6 NOT RECOMMENDED FOR USE IN HIGHLY CORROSIVE ENVIRONMENT.

TO ORDER BURNDY PRODUCTS CALL		UNIVERSAL TERMINAL	
UNITED STATES		ITEM NO: 10039510	
1-800-346-4175 (LONDONDERRY, NH)		CAT. NO: KA25UG4	
CANADA:		DRAWN BY: dspurrell 01/31/2013	
1-800-361-6975 (QUEBEC)		CHECKER: --	
1-800-387-6487 (ALL OTHER PROVINCES)		DSN APRVL: dspurrell	
FOR PRODUCT INFO: http://www.burndy.com		MFG APRVL: --	
		QA APRVL: C ACKERMAN 02/16/2013	
		MKT APRVL: MICHAEL 02/15/2013	
		PROD FAM: CM&R MECHANICAL	
		PROJECT #: --	
		SIZE: B	
		DOCUMENT TYPE: SALES	
		REL LEVEL: Released	
		DRAWING NO: 50018770	
		REV: A	
		SHEET 1 OF 1	