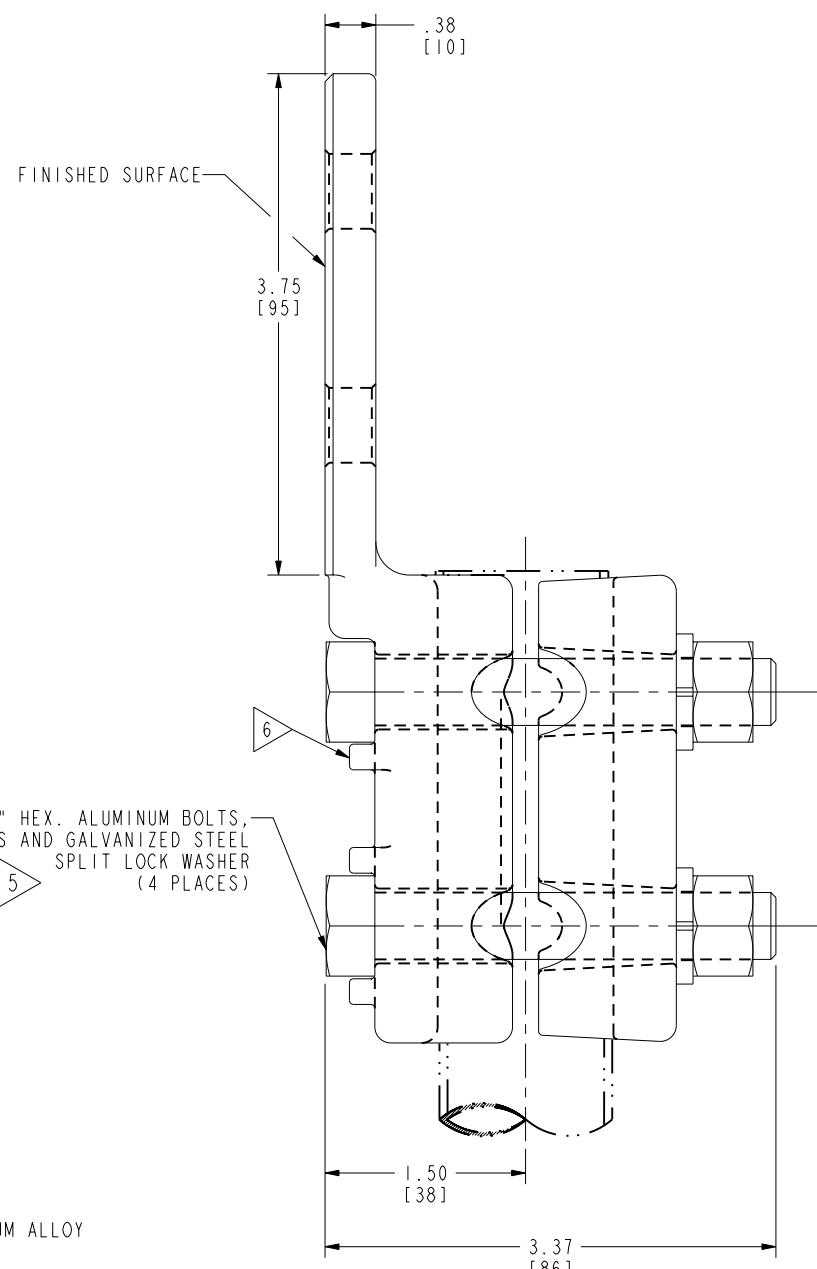
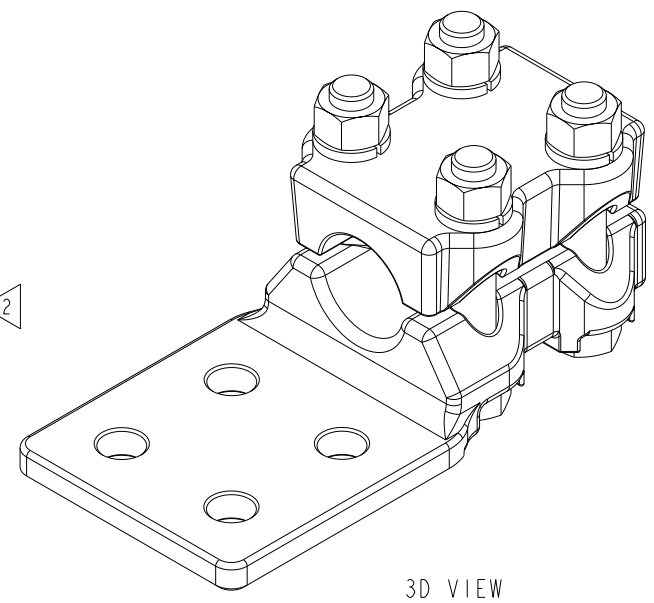
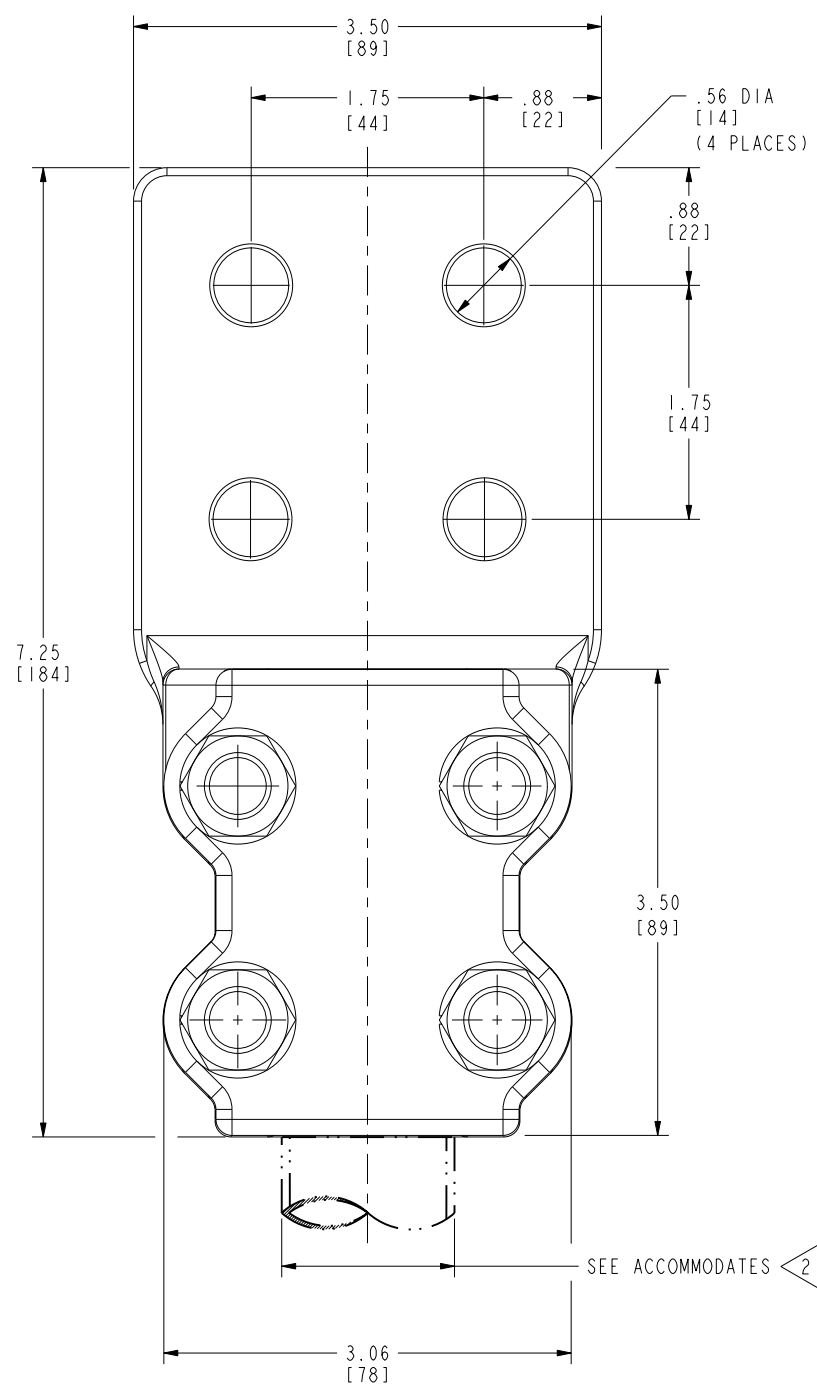


DRAWING NO.  
50019250

REV	DATE	DESCRIPTION	ECO	BY	C'H'K.
A	12/10/2012 00:00:00 AM	CREATE SALES DRAWING FOR CATALOG NA15A4NCG2-27003421	29740	MK	RL



1/2" HEX. ALUMINUM BOLTS,  
HEX. ALUMINUM NUTS AND GALVANIZED STEEL  
SPLIT LOCK WASHER  
(4 PLACES)



3D VIEW

NOTES:

- 1 MATERIAL:  
BODY & CAP: CAST ALUMINUM ALLOY
- 2 ACCOMMODATES:  
1" IPS (1.315 [33] DIA.) ALUMINUM TUBE.
- 3 DIMENSIONS IN BRACKETS [ ] DENOTES METRIC UNITS [SI UNITS]  
AND ARE ROUNDED TO THE NEAREST WHOLE NUMBER. UNLESS  
OTHERWISE SPECIFIED THESE UNITS SHALL BE USED FOR  
REFERENCE ONLY.
- 4 SCRATCH BRUSH CONNECTOR CONTACT SURFACE DRY,  
THEN APPLY PENETROX™. PENETROX™ CAN BE PURCHASED  
FROM BURNDY LLC. IN CANS OR PLASTIC SQUEEZE BOTTLES.
- 5 NOMINAL BOLT INSTALLATION TORQUE:  
1/2" HEX. ALUMINUM HARDWARE 300 IN-LBS [35 Nm].
- 6 HEX BOLTS CAPTURED TO PREVENT TURNING DURING INSTALLATION.
- 7 MARKING:  
BURNDY  
NA15A4NCG2  
1" IPS AL  
722-23452

TO ORDER BURNDY® PRODUCTS CALL		TERMINAL, TUBE TO FLAT	
UNITED STATES 1-800-346-4175 (LONDONDERRY, NH)		ITEM NO: 27003421	SCALE: 1:1
CANADA: 1-800-361-6975 (QUEBEC) 1-800-387-6487 (ALL OTHER PROVINCES)		CAT. NO: NA15A4NCG2	REV
FOR PRODUCT INFO: <a href="http://www.burndy.com">http://www.burndy.com</a>		DRAWN BY: M KATHIR 02/27/13	50019250
		CHECKER: R LAVOIE 08/05/13	A
		DSN APPVL: R LAVOIE 08/05/13	
		MFG APPVL: -- --	
		QA APPVL: J HILLMAN 08/08/13	
		MKT APPVL: V TORRES 08/02/13	
		PROJ #: --	
		SIZE: D	
		DOCUMENT TYPE: Sales	
		REL LEVEL: Released	

REV: PE0200