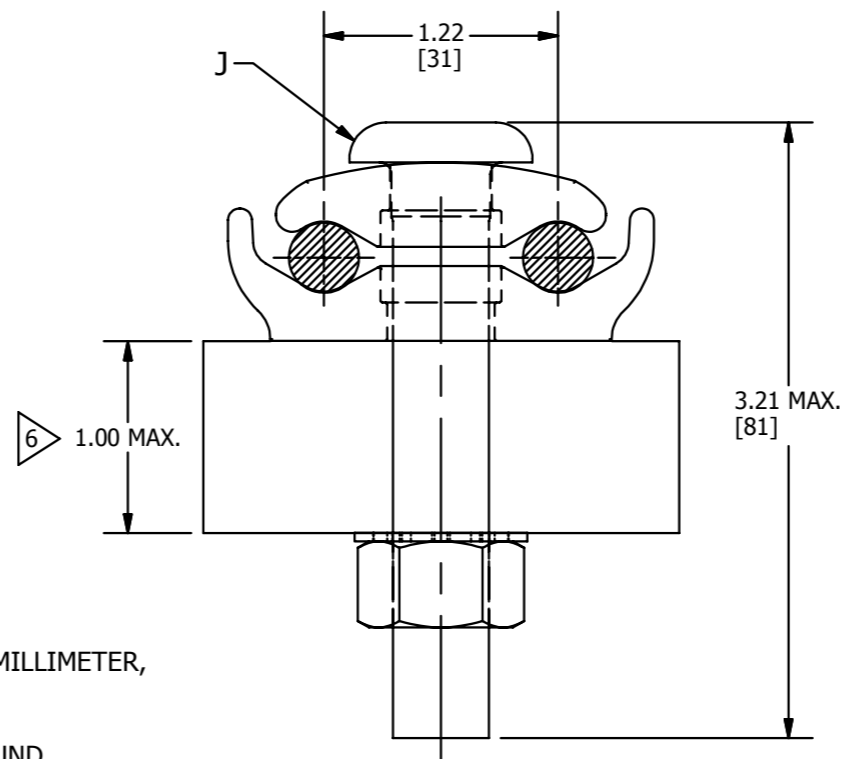
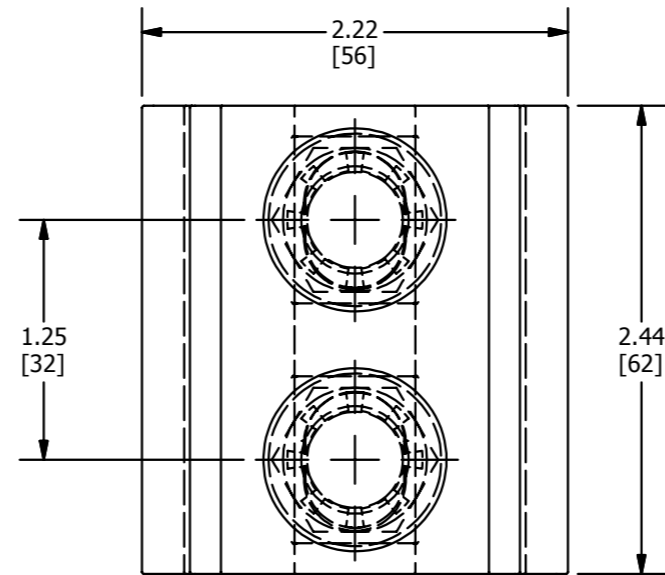


CATALOG NO.	AWG		METRIC WIRE SIZE		J	TORQUE		REV	DATE	DESCRIPTION	ECO	BY	C'H'K.
	MIN.	MAX.	MIN.	MAX.		Lb*in	N*m						
GL2929T8W	2/0 SOL (.365 DIA.)	250 kcmil (.575 DIA.)	70 mm ² STR [10.9]	120 mm ² STR [14.4]	1/2"	480	54.1	A	04/04/2013	SALES DRAWING RELEASE	31098	DK	MA



NOTES:

1. MATERIAL: CAST COPPER ALLOY.
2. DIMENSIONS IN BRACKETS [] ARE IN MILLIMETERS ROUNDED OFF TO THE NEAREST MILLIMETER, UNLESS OTHERWISE SPECIFIED AND ARE FOR REFERENCE ONLY.
3. UL 467 LISTED, FILE NO. E9999. SUITABLE FOR DIRECT BURIAL IN CONCRETE OR GROUND.
4. "J" OVAL SHANK EVERDUR BOLT, NUT & SPLIT LOCKWASHER.

5 SUFFIX "W" DENOTES TIN PLATED CAP, BODY AND HARDWARE.

6 SUFFIX "T8" DENOTES CONNECTOR CAN ACCOMMODATE UP TO 1" THICK BAR.

TO ORDER BURNDY® PRODUCTS CALL
 UNITED STATES
 1-800-346-4175 (LONDONDERRY, NH)
 CANADA:
 1-800-361-6975 (QUEBEC)
 1-800-387-6487 (ALL OTHER PROVINCES)
 FOR PRODUCT INFO: <http://www.burndy.com>

GROUND CLAMP			
ITEM NO: 10025029			
CAT. NO: GL2929T8W			
DRAWN BY: N.D.KANNAN	04/04/2013		
CHECKER: T.REYNOLDS	04/15/2013		
DSN APRVL: T.REYNOLDS	04/15/2013		
MFG APRVL: G.KELLY	04/15/2013		
QA APRVL: J.HILLMAN	04/15/2013		
MKT APRVL: P.THERRIEN	04/19/2013		
PROD FAM: --		DRAWING NO	REV
PROJECT #: --		50022279	A
DOCUMENT TYPE: Sales		SIZE	
REL LEVEL: Released		B	
		SHEET 1 OF 1	