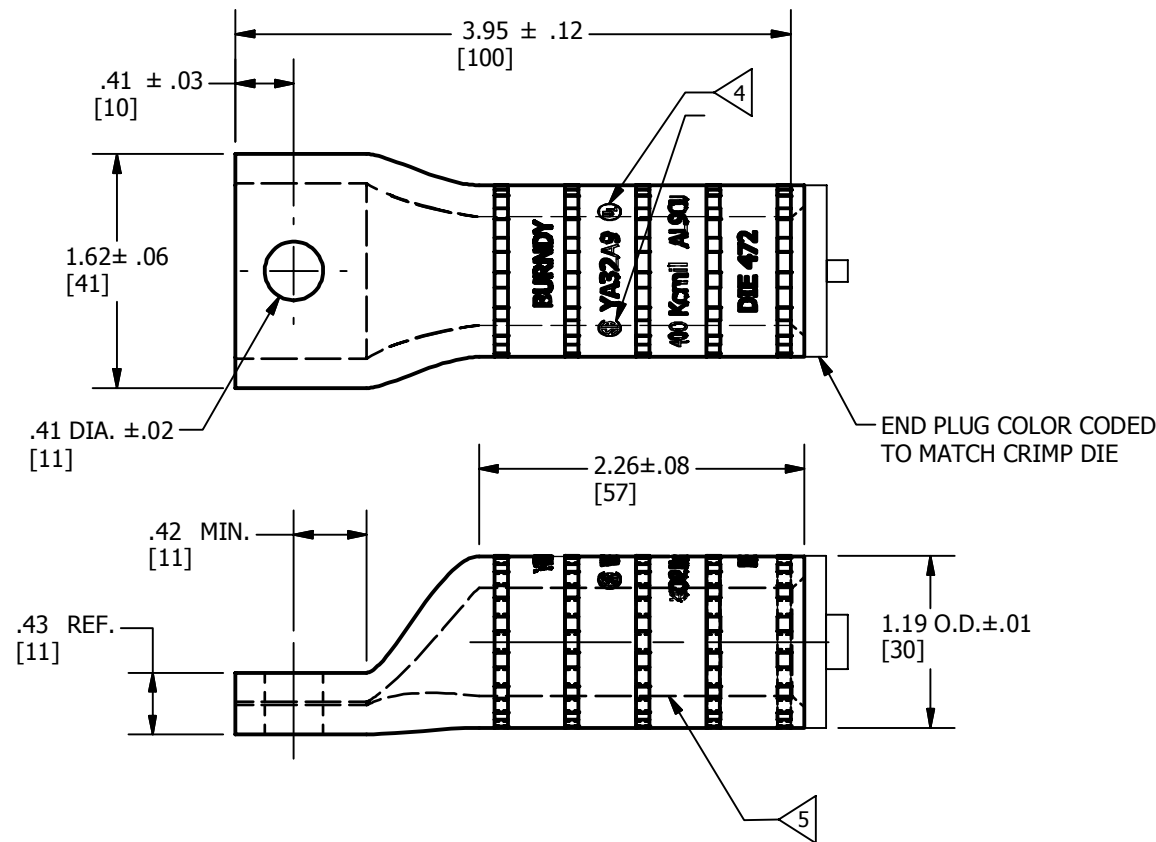
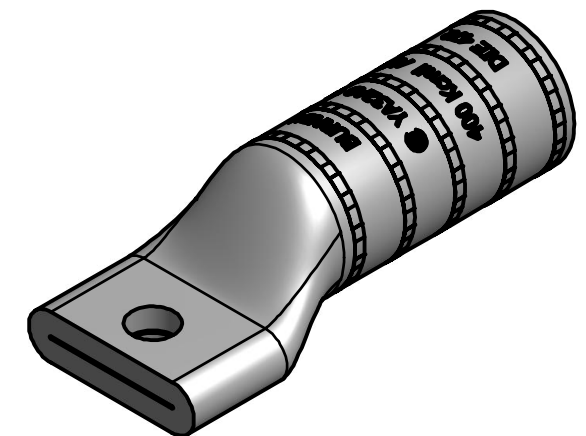


REV	DATE	DESCRIPTION	ECO	BY	C'H'K.
A	06/27/2013	CREATE SALES DRAWING	32191	GN	MB

CONDUCTOR ACCOMMODATED		BOLT SIZE [METRIC]	COLOR CODE	DIE INFORMATION		BURNDY® INSTALLATION TOOLING										DIELESS (# OF CRIMPS)	WIRE STRIP LENGTH			
ALUMINUM	COPPER			DIE INDEX	TYPE	MECHANICAL (# OF CRIMPS)				HYDRAULIC (# OF CRIMPS)										
400 Kcmil CLASS B CONCENTRIC COMPRESSED COMPACT SIW	400 Kcmil CLASS B, C CONCENTRIC COMPRESSED COMPACT	3/8 [M10]	GREEN	472	GREEN DIE SET	--	--	--	--	--	--	Y500CT PAT600 PATMD6	Y34A Y34B Y34BH	Y35, Y39 Y750 PAT750	Y46 PAT46	Y45	Y48BH	Y60BH	HYDRAULIC: Y644M (1) PAT644M (1)	2-5/16
					NEST INDENTOR	--	--	--	--	--	--				P35D (1) P48PR-1		C35D (1) Y48PR-1			



BARREL MARKING



NOTES:

1. MATERIAL : ALUMINUM.
2. HYLUG™ ACCOMMODATE U.S. STANDARD WASHERS.
3. REMOVE ALL EXCESS PENETROX™ FROM CONNECTOR AND ADJACENT CONDUCTOR PRIOR TO TAPING.
4. UL LISTED AND CSA CERTIFIED WIRE CONNECTORS. RATED 90 C (AL9CU). FOR USE WITH COPPER AND ALUMINUM CONDUCTOR.
5. CONNECTOR BARRELS PREFILLED WITH PENETROX™.
6. DIMENSIONS IN BRACKETS [] ARE IN MILLIMETERS ROUNDED OFF TO THE NEAREST MILLIMETER, UNLESS OTHERWISE SPECIFIED AND ARE FOR REFERENCE ONLY.
7. CATALOG # PT6515 ADAPTOR IS REQUIRED TO USE "U" DIES IN Y45 SERIES TOOLS.
8. CATALOG # PUADP-1 ASAPTOR IS REQUIRED TO USE IN Y46 SERIES TOOLS.
9. Y35P3 INDENTOR ADAPTOR REQUIRED FOR "Y34PR" TYPE INDENTORS.
10. FOR USE BY CUSTOMERS THAT HAVE THIS HYPRESS™. NO NEW HYPRESSES™ ARE BEING PROCESSED.

TO ORDER BURNDY® PRODUCTS CALL		HYLUG™	
UNITED STATES 1-800-346-4175 (LONDONDERRY, NH)		ITEM NO: 50026879	
CANADA: 1-800-361-6975 (QUEBEC) 1-800-387-6487 (ALL OTHER PROVINCES)		CAT. NO: YA32A9	
FOR PRODUCT INFO: http://www.burndy.com		DRAWN BY: PALANI M 06/13/2013	
		CHECKER: --	
		DSN APRVL: MICHAUD J 06/27/2013	
		MFG APRVL: KNAPTON M 07/03/2013	
		QA APRVL: WATTS T 06/28/2013	
		MKT APRVL: CAVANAUGH R 06/28/2013	
		PROJ #:	
		SIZE	
		DRAWING NO	
		REV	
		50026880	
		A	
		SHEET 1 OF 1	