

TO BE USED IN MOLE™ OUTLET SIZE	MAXIMUM CABLE ACCOMMODATED BY SOCKET	STUD SIZE J	RECOMMENDED TIGHTENING TORQUE		CATALOG NUMBER	DIMENSIONS IN INCHES [MM]					APPROX. SHIP WT. IN Lbs.	REV	DATE	DESCRIPTION	ECO	BY	C'H'K.
			LB-IN	NEWTON-METERS (NM)		B	CF (CROSS FLATS)	L	LL	Z (CROSS FLATS)							
A	4/0 Str.	5/8 - 18	450	50.8	Z28NR	.53 [13]	1.13 [29]	3.44 [87]	1.50 [38]	.88 [22]	.72	A	01/02/2014	SALES DRAWING RELEASED	34253	YM	MB
	250 kcmil	5/8 - 18			Z29NR	.53 [13]	1.19 [30]	3.56 [90]	1.63 [41]	.94 [24]	.76						
	300 kcmil	5/8 - 18			Z30NR	.53 [13]	1.25 [32]	3.63 [92]	1.69 [43]	1.13 [29]	.80						
	400 kcmil	5/8 - 18			Z32NR	.53 [13]	1.38 [35]	3.63 [92]	1.69 [43]	1.13 [29]	.90						
	500 kcmil	5/8 - 18			Z34NR	.53 [13]	1.50 [38]	3.69 [94]	1.75 [44]	1.25 [32]	1.2						
	600 kcmil	5/8 - 18			Z36NR	.53 [13]	1.50 [38]	3.81 [97]	1.88 [48]	1.31 [33]	1.4						
	800 kcmil	5/8 - 18			Z40NRA ①	.53 [13]	1.81 [46]	5.53 [140]	2.25 [57]	1.50 [38]	2.4						
B	4/0 Str.	7/8 - 14	700	79.1	Z28NRB	.69 [18]	1.50 [38]	3.50 [89]	1.56 [40]	.88 [22]	.74	A	01/02/2014	SALES DRAWING RELEASED	34253	YM	MB
	500 kcmil	7/8 - 14			Z34NRB ②	.69 [18]	1.50 [38]	3.69 [94]	1.75 [44]	1.25 [32]	1.5						
	800 kcmil	7/8 - 14			Z40NR	.69 [18]	1.81 [46]	4.38 [111]	2.25 [57]	1.50 [38]	1.9						
	1000 kcmil	7/8 - 14			Z44NR	.69 [18]	1.94 [49]	6.06 [154]	2.43 [62]	1.63 [41]	2.5						
C	1500 kcmil	1 - 1/8 - 12	950	107.3	Z46NR	.81 [21]	2.38 [60]	6.88 [175]	2.81 [71]	2.13 [54]	4.0	A	01/02/2014	SALES DRAWING RELEASED	34253	YM	MB
	2000 kcmil	1 - 1/8 - 12			Z48NR	.81 [21]	2.63 [67]	7.75 [197]	3.06 [78]	2.38 [60]	5.0						

## BURNDY® UNDERGROUND PRODUCTS FOR SECONDARY NETWORK DISTRIBUTION

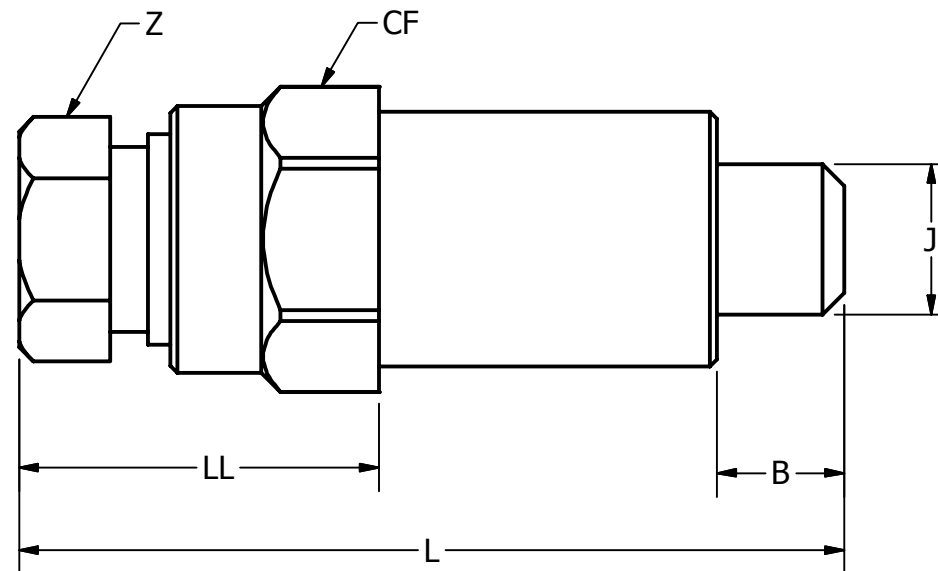
### SOCKET AND NUT ASSEMBLY

#### TYPE Z-NR

DESIGNED FOR USE WITH BURNDY® MOLES. WITH THE USE OF THE PROPER COMPRESSION CONES 12 SIZES TAKE A RANGE OF CABLES FROM NO.6 TO 2000 kcmil. THEIR COMPACT DESIGN LENDS THEM TO EASY EFFECTIVE TAPING. INSULATING SLEEVES ARE AVAILABLE TO KEEP TAPING TO A MINIMUM.

OUTLET RANGE: "A" 6 Str. - 800 kcmil  
 "B" 2 Str. - 1000 kcmil  
 "C" 1500 + 2000 kcmil

- ① USES INSULATING SLEEVE Z104C4434
- ② USES INSULATING SLEEVE Z88C3429



#### NOTES:

- DIMENSIONS IN BRACKETS [ ] ARE IN MILLIMETERS ROUNDED OFF TO THE NEAREST MILLIMETER, UNLESS OTHERWISE SPECIFIED AND ARE FOR REFERENCE ONLY.

TO ORDER BURNDY® PRODUCTS CALL		Z-NR SOCKET & NUT ASSEMBLY	
UNITED STATES 1-800-346-4175 (LONDONDERRY, NH)		ITEM NO: N/A	
CANADA: 1-800-361-6975 (QUEBEC) 1-800-387-6487 (ALL OTHER PROVINCES)		CAT. NO: SEE TABLE	
FOR PRODUCT INFO: <a href="http://www.burndy.com">http://www.burndy.com</a>		DRAWN BY: M YUVARAJ 01/02/2014	
		CHECKER: B MANIKANDAN 01/02/2014	
		DSN APRVL: WHITEY 12/11/2013	
		MFG APRVL: MATTHEW 12/12/2013	
		QA APRVL: --	
		MKT APRVL: STAN 12/11/2013	
		PROD FAM: --	
		DRAWING NO	
		50032378	
		REV	
		A	
		SHEET 1 OF 1	