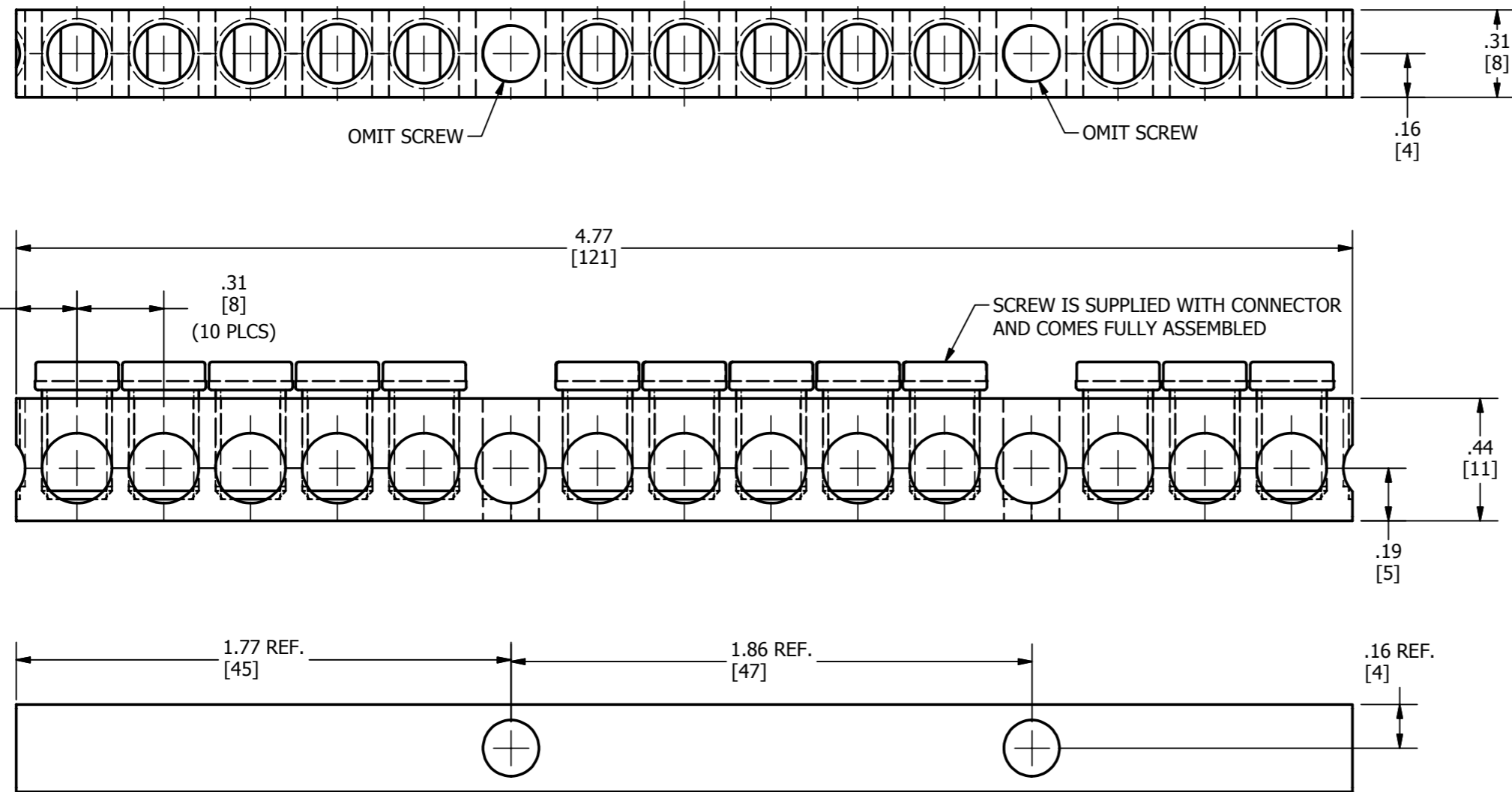
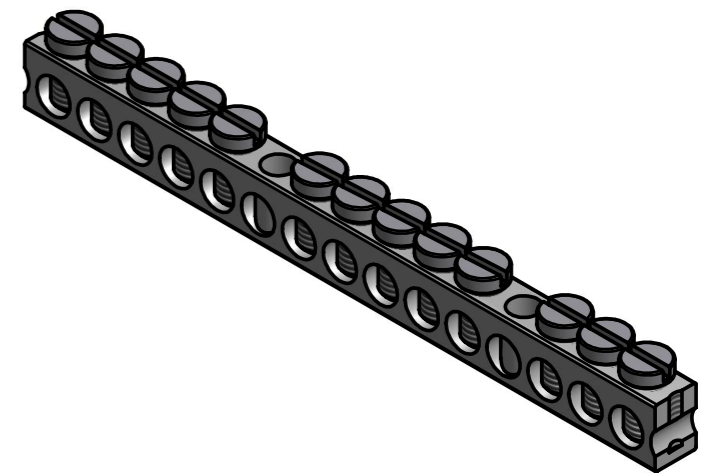
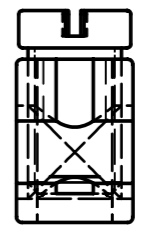
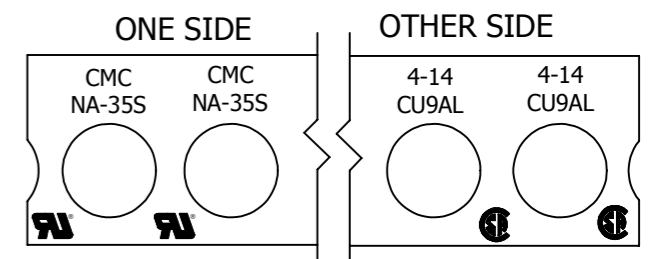


REV	DATE	DESCRIPTION	ECO	BY	CHK
C	07/31/2014	UPDATED AS PER MARKUP	37122	DK	MA



MARKING



- NOTES:**
1. MATERIAL - BODY: ALUMINUM TIN PLATED
MATERIAL - SCREW: STEEL ZINC PLATED
 2. CONDUCTOR RANGE ALUMINUM OR COPPER: #4 - #14
 3. CONNECTOR IS UL RECOGNIZED.
 4. DIMENSIONS IN BRACKETS [] ARE IN MILLIMETERS ROUNDED OFF TO THE NEAREST MILLIMETER, UNLESS OTHERWISE SPECIFIED.

TO ORDER BURNDY® PRODUCTS CALL		ALUMINUM NEUTRAL BAR ASSEMBLY	
UNITED STATES 1-800-346-4175 (LONDONDERRY, NH)		ITEM NO: 50035673	
CANADA: 1-800-361-6975 (QUEBEC) 1-800-387-6487 (ALL OTHER PROVINCES)		CAT. NO: K13P4CAG1	
FOR PRODUCT INFO: http://www.burndy.com		DRAWN BY: V KAMAL 1/21/2014	
		CHECKER: A MONTMINY 3/3/2014	
		DSN APRVL: A MONTMINY 3/3/2014	
		MFG APRVL: M SMITH 2/28/2014	
		QA APRVL: C KOWALCZYK 3/3/2014	
		MKT APRVL: M BAILY 3/2/2014	
		PROJ FAM: --	
		PROJECT #: --	
		DOCUMENT TYPE: SALES	
		REL LEVEL: Released	
		SIZE	DRAWING NO
		B	50038328
			REV
			C
		SHEET 1 OF 1	