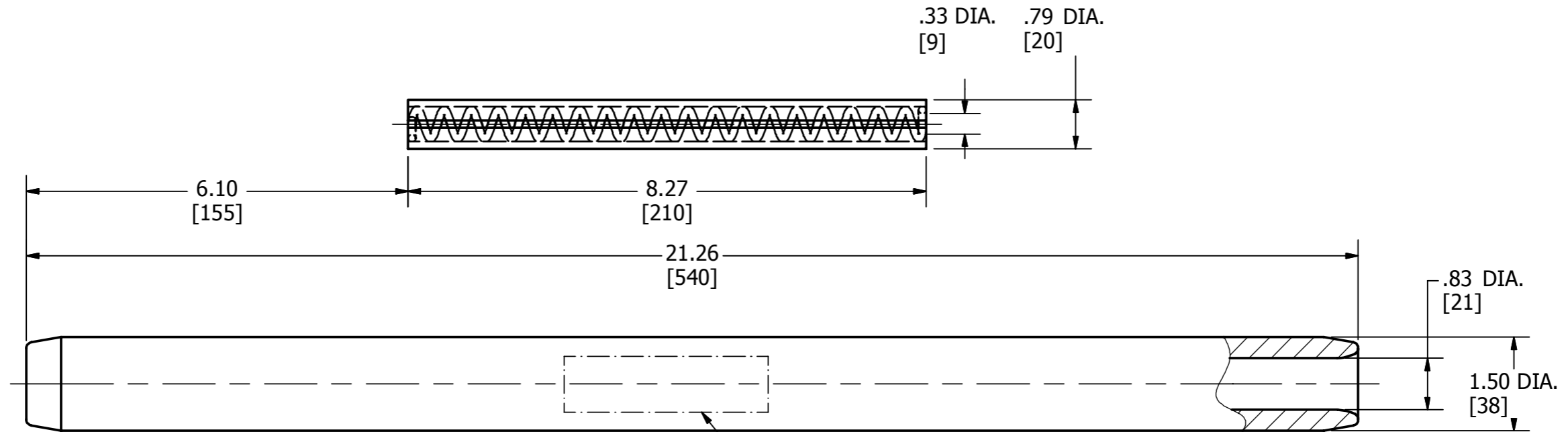


*** COMPONENT'S LIST ***

PT.NO	ITEM NUMBER	CATALOG NO.	QTY.	DESCRIPTION
1	50001092	PV1022/540	1	I_FTJ MAIN SUB-ASSY.
2	10095674	1606	1	I_FTJ STEEL SLEEVE

REV	DATE	DESCRIPTION	ECO	BY	C'H'K.
A	03/24/2014	DRAWING RELEASED	35030	VS	MRA



XECONEX 1022-540
 YY - Z - XXX
 (YY - YEAR OF PRODUCTION
 Z - MANUFACTURER'S SYMBOL
 XXX - PRODUCTION #)

NOTES:

- DIMENSIONS IN BRACKETS [] ARE IN MILLIMETERS ROUNDED OFF TO THE NEAREST MILLIMETER, UNLESS OTHERWISE SPECIFIED AND ARE FOR REFERENCE ONLY.
- THIS FITTING WILL FIT THE FOLLOWING CONDUCTORS:
 a) ORIOLE ACSS 336.4 kcmil ; 30/7.

TO ORDER BURNDY PRODUCTS CALL		IMPLO® FULL TENSION JOINT ASSEMBLY	
UNITED STATES		ITEM NO: 10101343	
1-800-346-4175 (LONDONDERRY, NH)		CAT. NO: 1050/ACSS	
CANADA:		DRAWN BY: vsubramanian 03/24/2014	
1-800-361-6975 (QUEBEC)		CHECKER: J ENG 02/20/2014	
1-800-387-6487 (ALL OTHER PROVINCES)		DSN APRVL: --	
FOR PRODUCT INFO: http://www.burndy.com		MFG APRVL: J ENG 02/20/2014	
		QA APRVL: V HOXHA 02/20/2014	
		MKT APRVL: --	
		PROD FAM: TRANSMISSION	
		PROJECT #: --	
		DRAWING NO	
		50038610	
		REV	
		A	
		SHEET 1 OF 1	