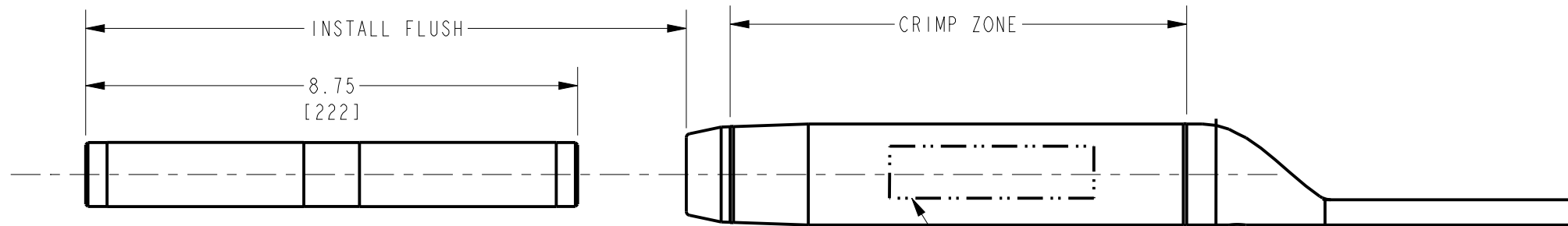


BURNDY® PRODUCTS - HYLUG™ & HARDWARE (ACCC®)

REV.	DATE	DESCRIPTION	ECO	BY	C'H'K.
B	06/13/2014 16:16:00 PM	UPDATED AS PER MARKUP	36473	SVY	MB

ITEM NUMBER	CATALOG NUMBER	ACCOMMODATES ACCC® CONDUCTOR				CONTAINS HARDWARE KIT CAT. #	CTC NUMBER	O.D.	I.D.	APPROXIMATE NOMINAL WEIGHT
		CODE WORD	SIZE	NOMINAL LOAD	MAX CURRENT					
50023423	BYNA160MM2TUHACCC	HELSINKI JAIPUR	160mm <sup>2</sup>	--	--	TMH24	600-253-2-0DU	1.14 [29]	.72 [18]	2 LBS [1 KG]
50045083	BYNA160MM2TUACCC		165mm <sup>2</sup>	--	--	--				
50023420	BYNA245MM2TUHACCC	COPENHAGEN REYKJAVIK & GLASGOW CASABLANCA	230mm <sup>2</sup>	--	--	TMH24	600-253-1-0DU	1.14 [29]	.85 [22]	
50023421	BYNA245MM2TUACCC		235mm <sup>2</sup>	23000 LBS [102 KN]	1140 AMPS	--				
			245mm <sup>2</sup>							
30004283	BYNA325MM2TUHACCC	LISBON OSLO AMSTERDAM	325mm <sup>2</sup>	--	--	TMH24	600-253-4-0DU	1.14 [29]	.97 [25]	
30004284	BYNA325MM2TUACCC		330mm <sup>2</sup>	--	--	--				

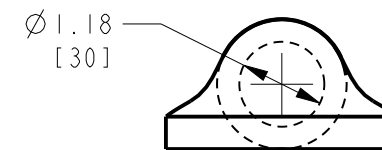
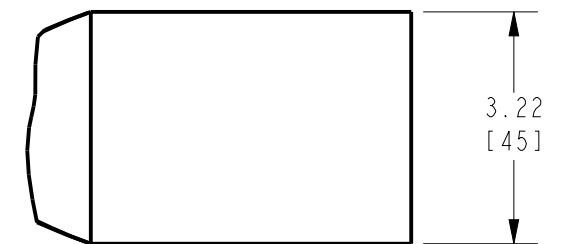
6 CATALOG NO. TMH24 HARDWARE KIT CONSIST OF	
QTY.	DESCRIPTION
4	BOLT, HEX. HEAD 1/2"-13 X 2" LONG
4	HEX. NUT, 1/2"-13
4	FLAT WASHER 1/2"
4	RESILIENT WASHER 1/2"



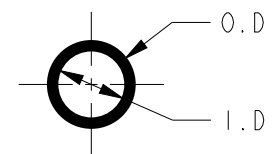
EXPLODED VIEW OF JUMPER PAD AND SLEEVE

TYPICAL LETTERING

BURNDY  
 BYNA245MM2TUACCC  
 CTC NO. 600-253-1-0DU  
 COPENHAGEN REYKJAVIK GLASGOW  
 CASABLANCA ACCC  
 USE BURNDY DIE 725  
 OVERLAP CRIMPS  
 CRIMP DIRECTION →



JUMPER PAD END VIEW



INNER SLEEVE  
 END VIEW

NOTES:

- MATERIAL:
  - CONNECTOR, ALUMINUM ALLOY, NO-OX-ID COATED
  - ALUMINUM FILLER PLUG
  - TMH24 HARDWARE
    - BOLTS (2024T4), NUTS (6061 T6) AND FLAT WASHERS, ALUMINUM ALLOY
    - RESILIENT WASHERS, GALVANIZED STEEL
- DIMENSIONS IN BRACKETS [ ] DENOTE METRIC UNITS [SI UNITS] AND ARE ROUNDED TO THE NEAREST WHOLE NUMBER. UNLESS OTHERWISE SPECIFIED THESE UNITS SHALL BE USED FOR REFERENCE ONLY.
- DESIGNED FOR CORONA FREE OPERATION TO 230 KV NO ACCESSORIES REQUIRED.
- CONNECTOR SHALL BE SHIPPED UN-ASSEMBLED.
- REFERENCE: 10092621, CONNECTOR INSTALLATION MUST APPLY PENETROX™ HT OXIDE INHIBITING JOINT COMPOUND ON CONDUCTOR AND O.D. OF INNER SLEEVE.
- 6 RECOMMENDED TIGHTENING TORQUE: 1/2-13 ALUMINUM HARDWARE: 300 LBS-IN [34 NM]
- 7 REFERENCE: CONDUCTOR MANUFACTURER'S SPECIFICATION, MAXIMUM CURRENT (AT 200°C)
- INSTALLATION TOOLING (NOT INCLUDED)  
 DIE SET L725, TOOL Y60BHU OR Y60BHU-D HYDRAULIC HYPRESS™
- 9 CATALOG NUMBER FOR HYLUG™ WITHOUT HARDWARE ARE CATALOG NUMBERS WITHOUT "H".

TO ORDER BURNDY® PRODUCTS CALL  
 UNITED STATES:  
 1-800-346-4175 (LONDONDERRY, NH)  
 CANADA:  
 1-800-361-6975 (QUEBEC)  
 1-800-387-6487 (ALL OTHER PROVINCES)  
 FOR PRODUCT INFO: <http://www.burndy.com>

HYLUG™ TERMINAL PAD ASSEMBLY (ACCC®) NO HOLES			
ITEM NO: SEE TABLE			
CAT. NO: SEE TABLE			
DRAWN BY: M. RAMESH	03/10/2014		
CHECKER: P. CHAN	03/07/2014		
DSN APPVL: P. CHAN	03/07/2014		
MFG APPVL: J. HEAD	03/08/2014		
QA APPVL: T. WATTS	03/08/2014		
MKT APPVL: B. CRUTCHER	03/08/2014		
PROD FAM: TRANSMISSION	DRAWING NO	REV	SCALE: 1:2
PROJECT #: -	SIZE	50039608	B
DOCUMENT TYPE: Sales	B	SHEET 1 OF 1	
REL LEVEL: Released			