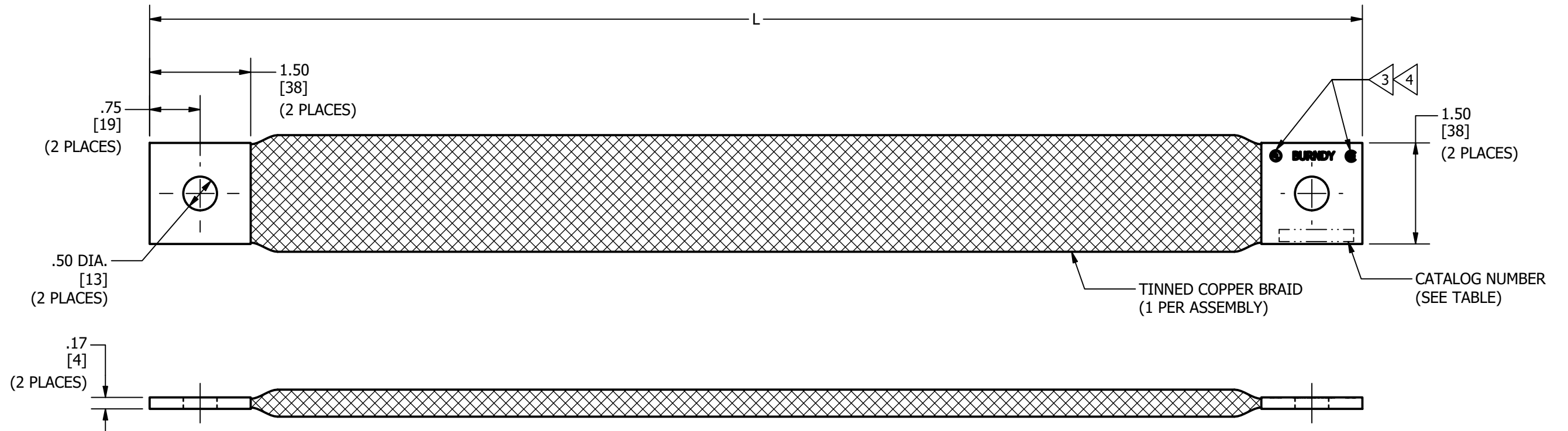


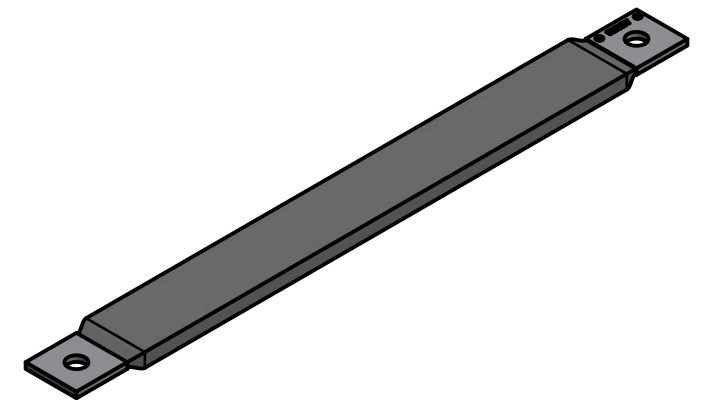
ITEM NUMBER	CATALOG NO.	Length (L)
50047793	BE6T716	6.00 [152]
50122104	BE8T716	8.00 [203]
50049995	BE12T716	12.00 [305]
50049996	BE18T716	18.00 [457]

REV	DATE	DESCRIPTION	ECO	BY	C'H'K.
C	04/16/21	ADDED MATERIAL TO TABLE	210406006902	JL	SB



NOTES:

- APPROXIMATE AMP RATING: 340 INDOOR, 405 OUTDOOR. THIS RATING MAY VARY WITH AMBIENT CONDITIONS, ORIENTATION OF THE BRAID, AND OTHER SERVICE CONDITIONS.
- DIMENSIONS IN BRACKETS [] ARE IN MILLIMETERS ROUNDED OFF TO THE NEAREST MILLIMETER, UNLESS OTHERWISE NOTED, AND ARE FOR REFERENCE ONLY.
- UL LISTED AND CSA CERTIFIED GROUNDING AND BONDING EQUIPMENT.
- BRAID SIZES MAY BE DESIGNATED BY SUFFIXES REPRESENTING VARIATIONS IN LENGTH, QUANTITY & SIZE OF MOUNTING HOLES, PAD SIZE AND FINISH. (REF. NOTES 3)
- APPROXIMATE WEIGHT: 3.559 LBS



TO ORDER BURNDY® PRODUCTS CALL		CUSTOM BRAID	
UNITED STATES 1-800-346-4175 (LONDONDERRY, NH)		ITEM NO: (SEE TABLE)	
CANADA: 1-800-361-6975 (QUEBEC) 1-800-387-6487 (ALL OTHER PROVINCES)		CAT. NO: BE-T716 (TABLE)	
FOR PRODUCT INFO: http://www.burndy.com		DRAWN BY: C. RAJEEV GANDHI 9/9/2014	
		CHECKER: L. TROMBLEY 12/18/2014	
		DSN APRVL: L. TROMBLEY 12/17/2014	
		MFG APRVL: M. STEVENS 12/17/2014	
		QA APRVL: C. LINDQUIST 12/21/2014	
		MKT APRVL: K. ROBICHEAU 12/16/2014	
		PROD FAM: MECHANICAL GROUNDING	DRAWING NO
		PROJECT #: SALES	50048722
		REL LEVEL: Released	REV C
		SIZE B	SHEET 1 OF 1