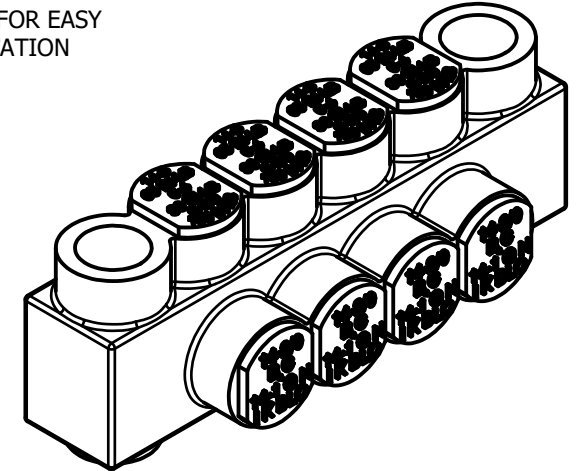
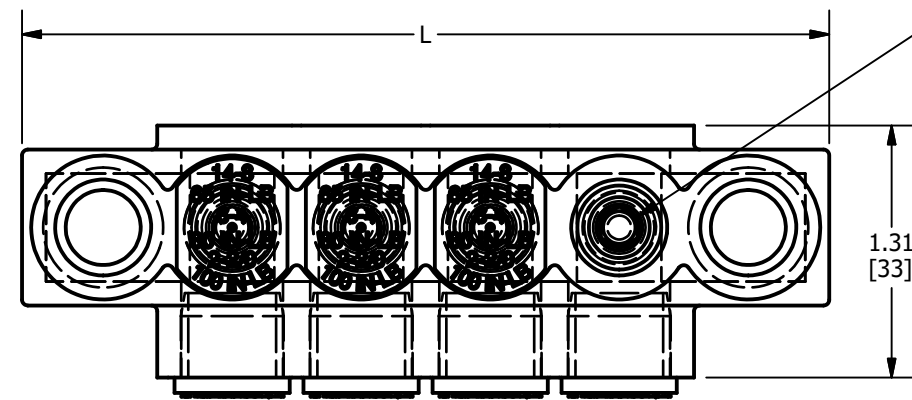


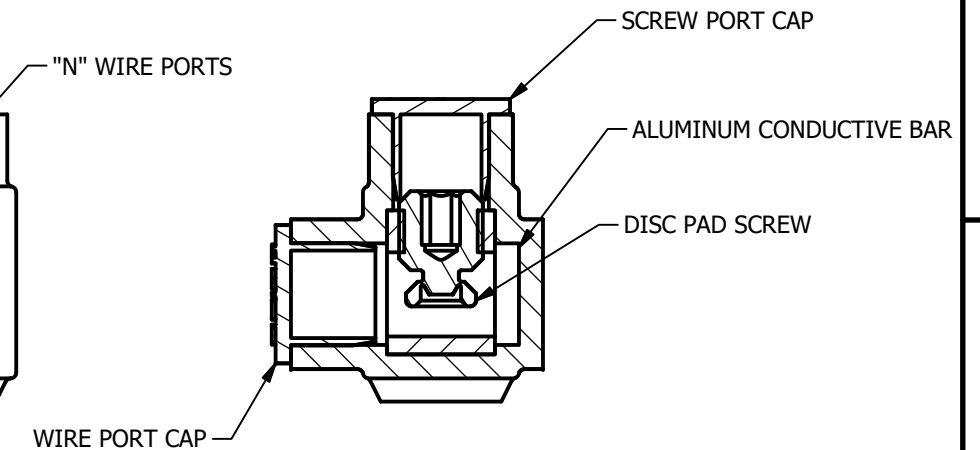
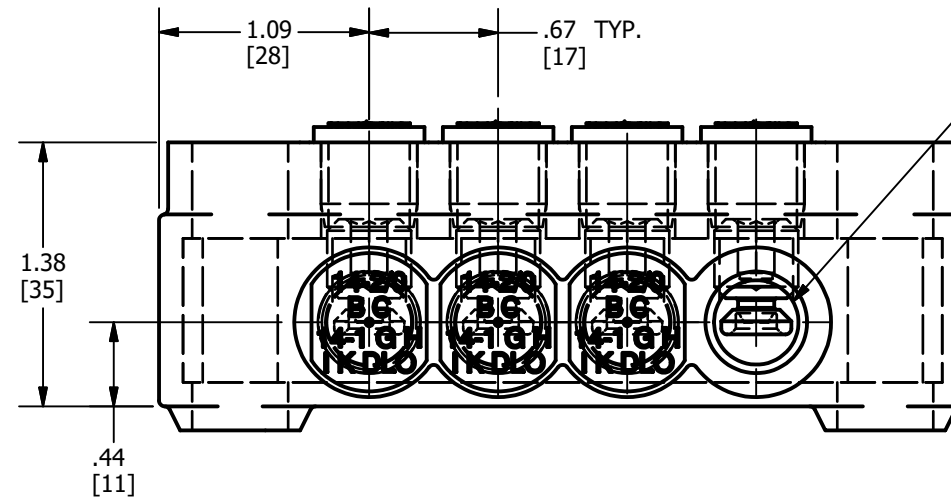
CATALOG NUMBER	ITEM NUMBER	L	N	M	COLOR CODE
BIBS2/04FXMT	50046932	3.954	4	6	BLACK
BIBS2/06FXMT	50046933	5.298	6	8	
BIBS2/08FXMT	50046934	6.642	8	10	
BIBS2/010FXMT	50046935	7.986	10	12	
BIBS2/012FXMT	50046936	9.330	12	14	

Wire Range	Torque, in-lbs	
#14 - 2/0 CLASS B, C	#14-#6	80
#14 - #1 CLASS G, H, I, K, DLO	#4-2/0	100

REV	DATE	DESCRIPTION	ECO	BY	C'H'K.
C	11/09/208	UPDATED TABLE INFO	50268	JL	TR



FEATURES	BENEFITS
PLASTISOL COVERED AL 6060-T6 BODY	SAVES TIME, LOWERS INSTALLATION COST, ELIMINATES TAPING
CLEAR PLASTISOL	ALLOWS VISUAL CONFIRMATION THAT CONDUCTOR IS PROPERLY INSERTED
OXIDE-INHIBITOR IS PREFILLED	INHIBITS MOISTURE AND CONTAMINATES FROM ENTERING THE CONTACT AREA
RANGE-TAKING IN BOTH CODE AND FLEX	REDUCES THE NUMBER OF CONNECTORS CARRIED IN INVENTORY
WIRE AND SCREW PORT COVERS	PROTECTS AGAINST CONTAMINATION AND ACCIDENTAL CONTACT OF ENERGIZED PARTS.
WIRE RANGE AND TORQUE REQUIREMENTS PRINTED ONTO THE CAPS	ALLOWS FOR EASY REFERENCE TO IMPORTANT INSTALLATION INFORMATION
UNIQUE DISC PAD SCREW	IMPROVES WIRE CONTACT AREA



LISTED TO 486A-B, FILE E9498

CERTIFIED TO C22.2, NO. 65, FILE 042860_C_000

BIBS 2/0 3 FX MT MOUNTED
 FLEX CONDUCTOR RATED
 WIRE PORTS (SEE COLUMN "N" IN TABLE)
 WIRE SIZE ACCOMODATED (AL/CU) STR.
 BURNDY INSULATED BLOCK
 SINGLE SIDE ENTRY

NOTES:

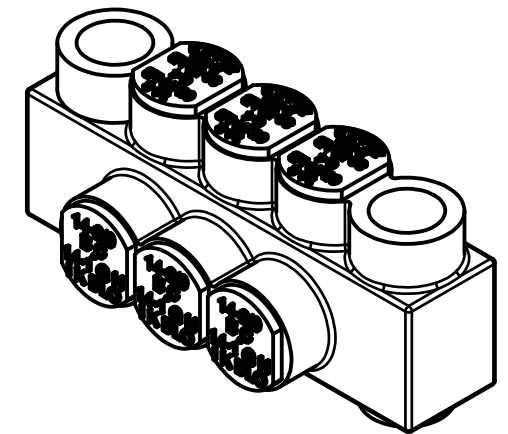
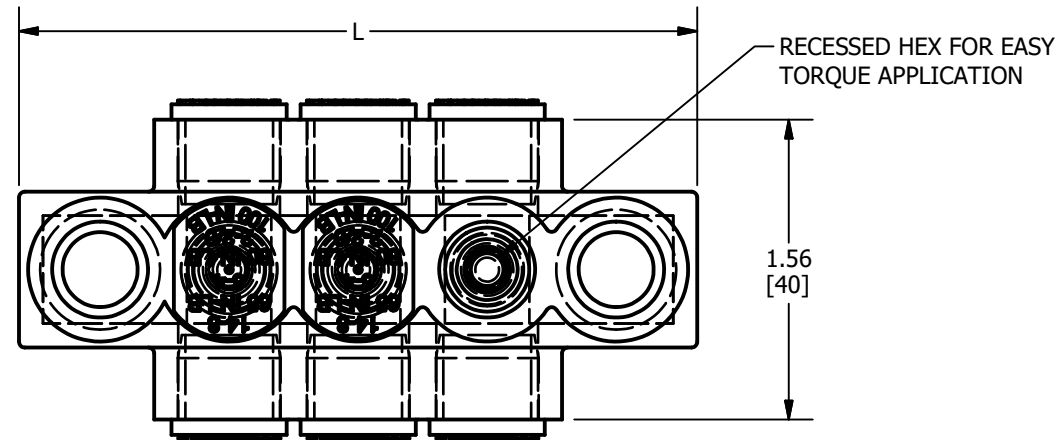
- DIMENSIONS IN BRACKETS [] ARE IN MILLIMETERS ROUNDED OFF TO THE NEAREST MILLIMETER, UNLESS OTHERWISE SPECIFIED AND ARE FOR REFERENCE ONLY.
- THIS DRAWING TO BE INTERPRETED PER ASME Y14.5M-2009.
- MATERIAL: BODY - TIN PLATED ALUMINUM
 SCREW - CLEAR COATED ALUMINUM
 INSULATION - PLASTISOL
 CAPS - POLYETHOLENE
- OPERATING TEMPERATURE - -40°C TO 135°C.
- VOLTAGE RATING - 600 V.
- AMPERAGE RATING - 195 A. VALUES BASED ON NFPA 70, TABLE 310.15(B)(16). VALUES MAY VARY BASED UPON AMBIENT CONDITIONS AND CONDUCTOR PROPERTIES.

TO ORDER BURNDY® PRODUCTS CALL		FULLY INSULATED DISTRIBUTION BLOCKS-UNITAP™	
UNITED STATES 1-800-346-4175 (LONDONDERRY, NH)		ITEM NO: SEE TABLE	
CANADA: 1-800-361-6975 (QUEBEC) 1-800-387-6487 (ALL OTHER PROVINCES)		CAT. NO: SEE TABLE	
FOR PRODUCT INFO: http://www.burndy.com		DRAWN BY: S.BALARAMAN 9/4/2014	
		CHECKER: T.REYNOLDS 12/17/2015	
		DSN APRVL: T.REYNOLDS 12/17/2015	
		MFG APRVL: --	
		QA APRVL: C.KOWALCZYK 12/20/2015	
		MKT APRVL: M.BAILLY 12/20/2015	
		PROJ #: --	
		SIZE	
		50050187	
		REVISION	
		C	

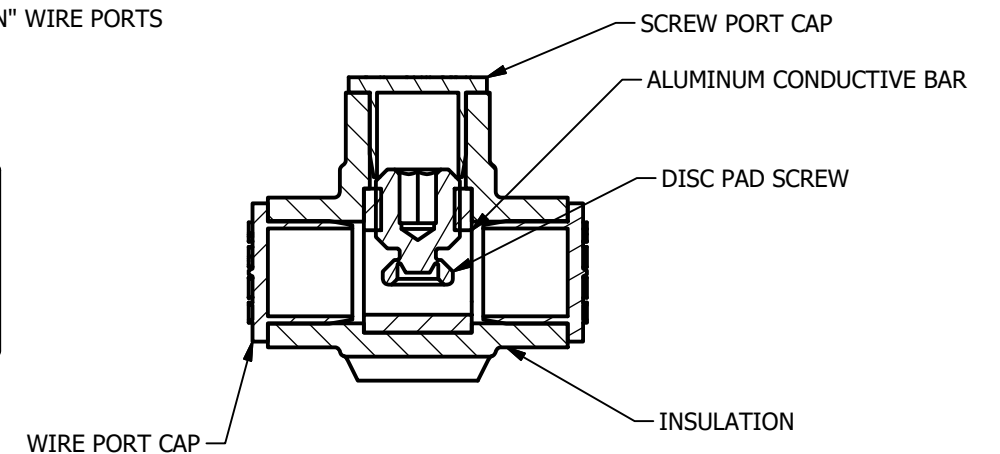
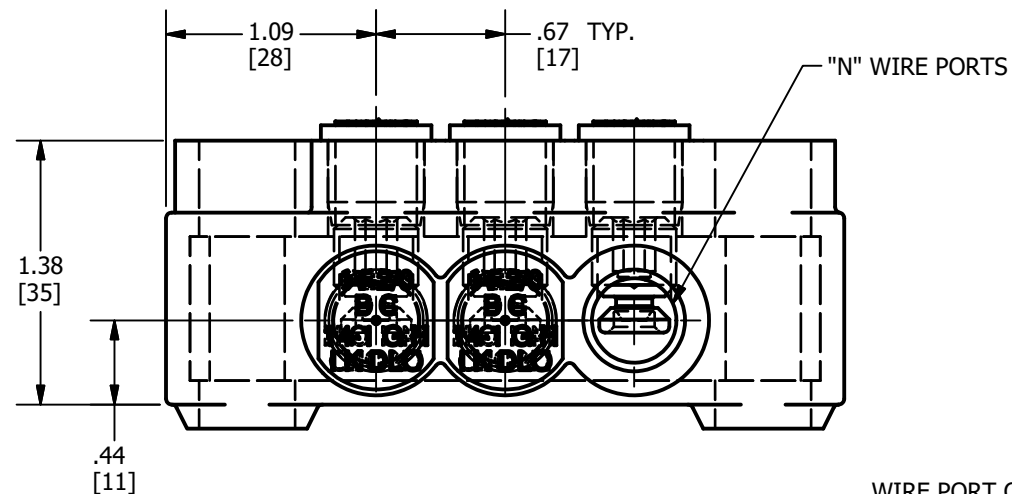
CATALOG NUMBER	ITEM NUMBER	L	N	M	COLOR CODE
BIBD2/03FXMT	50046956	3.282	3	5	BLACK
BIBD2/04FXMT	50046957	3.954	4	6	
BIBD2/06FXMT	50046958	5.298	6	8	
BIBD2/08FXMT	50046959	6.642	8	10	
BIBD2/010FXMT	50046960	7.986	10	12	
BIBD2/012FXMT	50046961	9.330	12	14	

Wire Range	Torque, in-lbs	
#14 - 2/0 CLASS B, C	#14-#6	80
#14 - #1 CLASS G, H, I, K, DLO	#4-2/0	100

REV	DATE	DESCRIPTION	ECO	BY	C'H'K.
C	11/09/208	UPDATED TABLE INFO	50268	JL	TR



FEATURES	BENEFITS
PLASTISOL COVERED AL 6060-T6 BODY	SAVES TIME, LOWERS INSTALLATION COST, ELIMINATES TAPING
CLEAR PLASTISOL	ALLOWS VISUAL CONFIRMATION THAT CONDUCTOR IS PROPERLY INSERTED
OXIDE-INHIBITOR IS PREFILLED	INHIBITS MOISTURE AND CONTAMINATES FROM ENTERING THE CONTACT AREA
RANGE-TAKING IN BOTH CODE AND FLEX	REDUCES THE NUMBER OF CONNECTORS CARRIED IN INVENTORY
WIRE AND SCREW PORT COVERS	PROTECTS AGAINST CONTAMINATION AND ACCIDENTAL CONTACT OF ENERGIZED PARTS.
WIRE RANGE AND TORQUE REQUIREMENTS PRINTED ONTO THE CAPS	ALLOWS FOR EASY REFERENCE TO IMPORTANT INSTALLATION INFORMATION
UNIQUE DISC PAD SCREW	IMPROVES WIRE CONTACT AREA



LISTED TO 486A-B, FILE E9498

CERTIFIED TO C22.2, NO. 65, FILE 042860_C_000

BIBD 2/0 3 FX MT MOUNTED
 FLEX CONDUCTOR RATED
 WIRE PORTS (SEE COLUMN "N" IN TABLE)
 WIRE SIZE ACCOMODATED (AL/CU) STR.
 BURNDY INSULATED BLOCK
 DOUBLE SIDE ENTRY

NOTES:

- DIMENSIONS IN BRACKETS [] ARE IN MILLIMETERS ROUNDED OFF TO THE NEAREST MILLIMETER, UNLESS OTHERWISE SPECIFIED AND ARE FOR REFERENCE ONLY.
- THIS DRAWING TO BE INTERPRETED PER ASME Y14.5M-2009.
- MATERIAL: BODY - TIN PLATED ALUMINUM
 SCREW - CLEAR COATED ALUMINUM
 INSULATION - PLASTISOL
 CAPS - POLYETHOLENE
- OPERATING TEMPERATURE - -40°C TO 135°C.
- VOLTAGE RATING - 600 V.
- AMPERAGE RATING - 195 A. VALUES BASED ON NFPA 70, TABLE 310.15(B)(16). VALUES MAY VARY BASED UPON AMBIENT CONDITIONS AND CONDUCTOR PROPERTIES.

TO ORDER BURNDY® PRODUCTS CALL
 UNITED STATES
 1-800-346-4175 (LONDONDERRY, NH)
 CANADA:
 1-800-361-6975 (QUEBEC)
 1-800-387-6487 (ALL OTHER PROVINCES)
 FOR PRODUCT INFO: <http://www.burndy.com>

FULLY INSULATED DISTRIBUTION BLOCKS-UNITAP™	
ITEM NO: SEE TABLE	
CAT. NO: SEE TABLE	
DRAWN BY: S.BALARAMAN	9/4/2014
CHECKER: T.REYNOLDS	12/17/2015
DSN APRVL: T.REYNOLDS	12/17/2015
MFG APRVL: --	
QA APRVL: C.KOWALCZYK	12/20/2015
MKT APRVL: M.BAILLY	12/20/2015
PROD FAM: --	DRAWING NO
PROJECT #: --	50050187
DOCUMENT TYPE: SALES	SIZE: B
REL LEVEL: Released	SHEET 2 OF 8

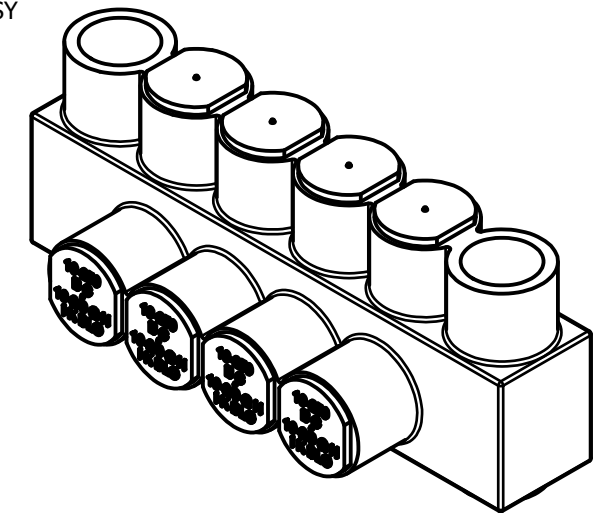
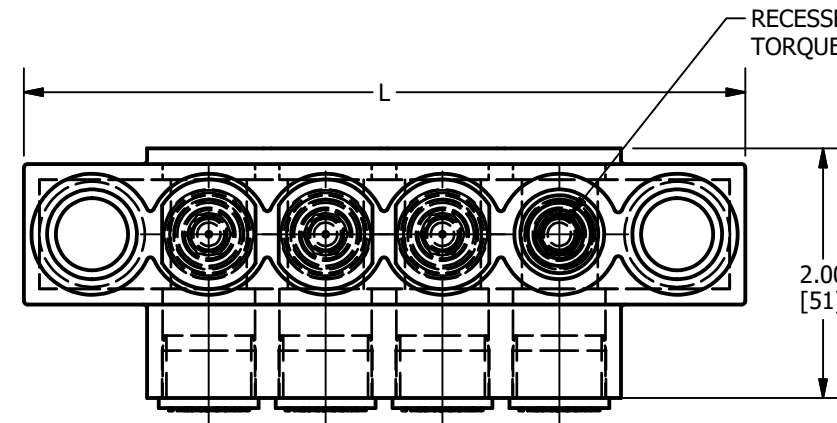


REV
C

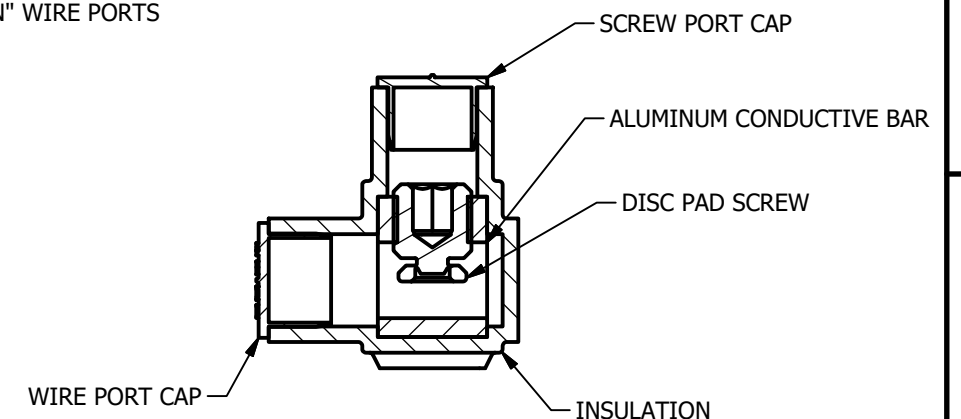
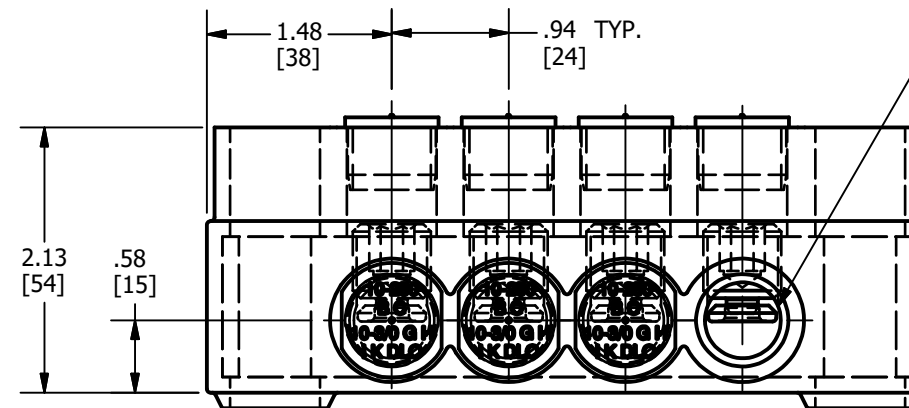
CATALOG NUMBER	ITEM NUMBER	L	N	M	COLOR CODE
BIBS2504FXMT	50046938	5.532	4	6	YELLOW
BIBS2506FXMT	50046939	7.408	6	8	
BIBS2508FXMT	50046940	9.284	8	10	
BIBS25010FXMT	50046941	11.160	10	12	
BIBS25012FXMT	50046942	13.036	12	14	

Wire Range	Torque, in-lbs	
#10 - 250 CLASS B, C	#10-#1	180
#10 - 3/0 CLASS G, H, I, K, DLO	1/0-250	300

REV	DATE	DESCRIPTION	ECO	BY	C'H'K.
C	11/09/208	UPDATED TABLE INFO	50268	JL	TR



FEATURES	BENEFITS
PLASTISOL COVERED AL 6060-T6 BODY	SAVES TIME, LOWERS INSTALLATION COST, ELIMINATES TAPING
CLEAR PLASTISOL	ALLOWS VISUAL CONFIRMATION THAT CONDUCTOR IS PROPERLY INSERTED
OXIDE-INHIBITOR IS PREFILLED	INHIBITS MOISTURE AND CONTAMINATES FROM ENTERING THE CONTACT AREA
RANGE-TAKING IN BOTH CODE AND FLEX	REDUCES THE NUMBER OF CONNECTORS CARRIED IN INVENTORY
WIRE AND SCREW PORT COVERS	PROTECTS AGAINST CONTAMINATION AND ACCIDENTAL CONTACT OF ENERGIZED PARTS.
WIRE RANGE AND TORQUE REQUIREMENTS PRINTED ONTO THE CAPS	ALLOWS FOR EASY REFERENCE TO IMPORTANT INSTALLATION INFORMATION
UNIQUE DISC PAD SCREW	IMPROVES WIRE CONTACT AREA



NOTES:

- DIMENSIONS IN BRACKETS [] ARE IN MILLIMETERS ROUNDED OFF TO THE NEAREST MILLIMETER, UNLESS OTHERWISE SPECIFIED AND ARE FOR REFERENCE ONLY.
- THIS DRAWING TO BE INTERPRETED PER ASME Y14.5M-2009.
- MATERIAL: BODY - TIN PLATED ALUMINUM
SCREW - CLEAR COATED ALUMINUM
INSULATION - PLASTISOL
CAPS - POLYETHYLENE
- OPERATING TEMPERATURE - -40°C TO 135°C.
- VOLTAGE RATING - 600 V.
- AMPERAGE RATING - 290 A. VALUES BASED ON NFPA 70, TABLE 310.15(B)(16). VALUES MAY VARY BASED UPON AMBIENT CONDITIONS AND CONDUCTOR PROPERTIES.

LISTED TO 486A-B, FILE E9498

CERTIFIED TO C22.2, NO. 65, FILE 042860_C_000

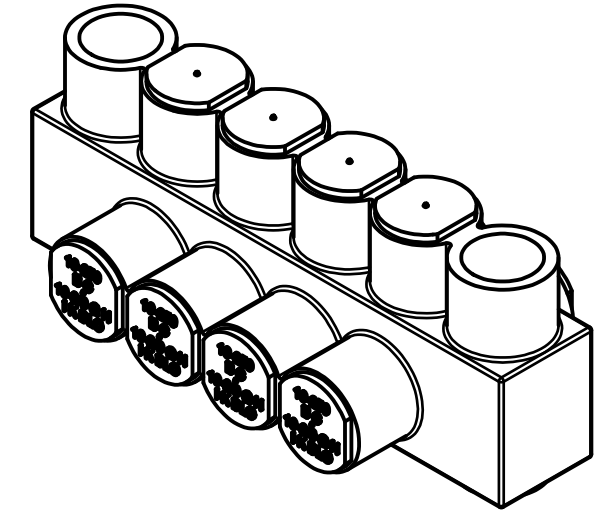
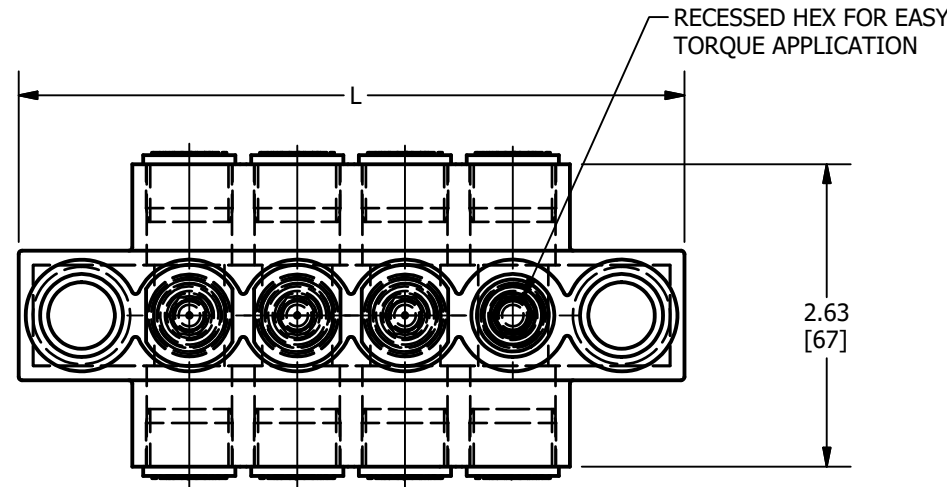
BIBS 250 3 FX MT MOUNTED
FLEX CONDUCTOR RATED
WIRE PORTS (SEE COLUMN "N" IN TABLE)
WIRE SIZE ACCOMODATED (AL/CU) STR.
BURNDY INSULATED BLOCK
SINGLE SIDE ENTRY

TO ORDER BURNDY® PRODUCTS CALL		FULLY INSULATED DISTRIBUTION BLOCKS-UNITAP™	
UNITED STATES 1-800-346-4175 (LONDONDERRY, NH)		ITEM NO: SEE TABLE	
CANADA: 1-800-361-6975 (QUEBEC) 1-800-387-6487 (ALL OTHER PROVINCES)		CAT. NO: SEE TABLE	
FOR PRODUCT INFO: http://www.burndy.com		DRAWN BY: S.BALARAMAN 9/4/2014	
		CHECKER: T.REYNOLDS 12/17/2015	
		DSN APRVL: T.REYNOLDS 12/17/2015	
		MFG APRVL: --	
		QA APRVL: C.KOWALCZYK 12/20/2015	
		MKT APRVL: M.BAILLY 12/20/2015	
		PROD FAM: --	
		DRAWING NO	
		50050187	
		REV	
		C	
		SHEET 3 OF 8	

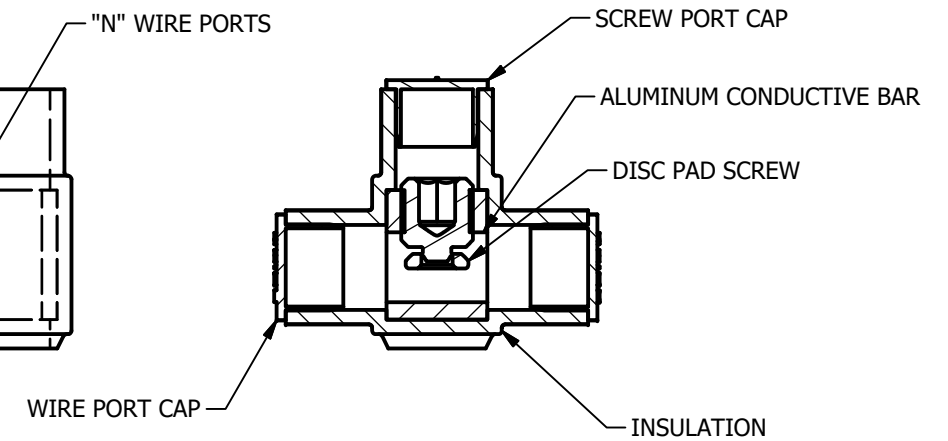
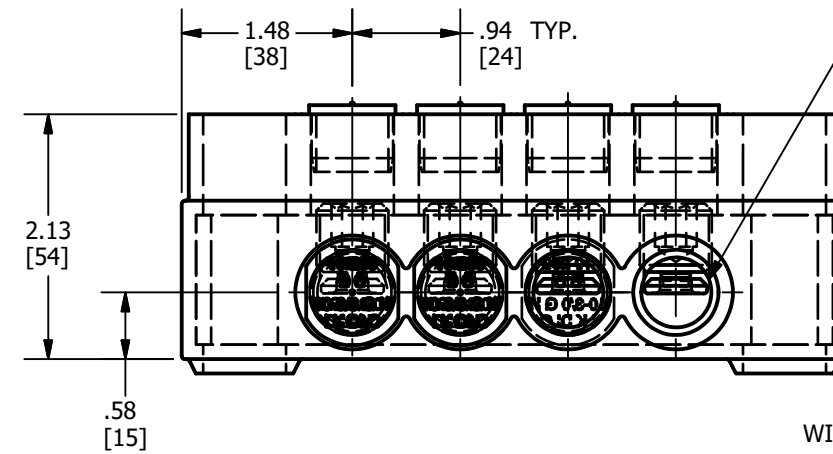
CATALOG NUMBER	ITEM NUMBER	L	N	M	COLOR CODE
BIBD2504FXMT	50046953	5.532	4	6	YELLOW
BIBD2506FXMT	50046964	7.408	6	8	
BIBD2508FXMT	50046965	9.284	8	10	
BIBD25010FXMT	50046966	11.160	10	12	
BIBD25012FXMT	50046967	13.036	12	14	

Wire Range	Torque, in-lbs	
#10 - 250 CLASS B, C	#10-#1	180
#10 - 3/0 CLASS G, H, I, K, DLO	1/0-250	300

REV	DATE	DESCRIPTION	ECO	BY	C'H'K.
C	11/09/208	UPDATED TABLE INFO	50268	JL	TR



FEATURES	BENEFITS
PLASTISOL COVERED AL 6060-T6 BODY	SAVES TIME, LOWERS INSTALLATION COST, ELIMINATES TAPING
CLEAR PLASTISOL	ALLOWS VISUAL CONFIRMATION THAT CONDUCTOR IS PROPERLY INSERTED
OXIDE-INHIBITOR IS PREFILLED	INHIBITS MOISTURE AND CONTAMINATES FROM ENTERING THE CONTACT AREA
RANGE-TAKING IN BOTH CODE AND FLEX	REDUCES THE NUMBER OF CONNECTORS CARRIED IN INVENTORY
WIRE AND SCREW PORT COVERS	PROTECTS AGAINST CONTAMINATION AND ACCIDENTAL CONTACT OF ENERGIZED PARTS.
WIRE RANGE AND TORQUE REQUIREMENTS PRINTED ONTO THE CAPS	ALLOWS FOR EASY REFERENCE TO IMPORTANT INSTALLATION INFORMATION
UNIQUE DISC PAD SCREW	IMPROVES WIRE CONTACT AREA



NOTES:

- DIMENSIONS IN BRACKETS [] ARE IN MILLIMETERS ROUNDED OFF TO THE NEAREST MILLIMETER, UNLESS OTHERWISE SPECIFIED AND ARE FOR REFERENCE ONLY.
- THIS DRAWING TO BE INTERPRETED PER ASME Y14.5M-2009.
- MATERIAL: BODY - TIN PLATED ALUMINUM
SCREW - CLEAR COATED ALUMINUM
INSULATION - PLASTISOL
CAPS - POLYETHOLENE
- OPERATING TEMPERATURE - -40°C TO 135°C.
- VOLTAGE RATING - 600 V.
- AMPERAGE RATING - 290A. VALUES BASED ON NFPA 70, TABLE 310.15(B)(16). VALUES MAY VARY BASED UPON AMBIENT CONDITIONS AND CONDUCTOR PROPERTIES.

LISTED TO 486A-B, FILE E9498

CERTIFIED TO C22.2, NO. 65, FILE 042860_C_000

BIBD 250 3 FX MT MOUNTED
 FLEX CONDUCTOR RATED
 WIRE PORTS (SEE COLUMN "N" IN TABLE)
 WIRE SIZE ACCOMODATED (AL/CU) STR.
 BURNDY INSULATED BLOCK
 DOUBLE SIDE ENTRY

TO ORDER BURNDY® PRODUCTS CALL		FULLY INSULATED DISTRIBUTION BLOCKS-UNITAP™	
UNITED STATES 1-800-346-4175 (LONDONDERRY, NH)		ITEM NO: SEE TABLE	
CANADA: 1-800-361-6975 (QUEBEC) 1-800-387-6487 (ALL OTHER PROVINCES)		CAT. NO: SEE TABLE	
FOR PRODUCT INFO: http://www.burndy.com		DRAWN BY: S.BALARAMAN 9/4/2014	
		CHECKER: T.REYNOLDS 12/17/2015	
		DSN APRVL: T.REYNOLDS 12/17/2015	
		MFG APRVL: --	
		QA APRVL: C.KOWALCZYK 12/20/2015	
		MKT APRVL: M.BAILLY 12/20/2015	
		PROJ #: --	
		SIZE: B	
		DRAWING NO: 50050187	
		REV: C	
		SHEET 4 OF 8	

CATALOG NUMBER	ITEM NUMBER	L	N	M	COLOR CODE
BIBS3504FXMT	50046944	5.610	4	6	RED
BIBS3506FXMT	50046945	7.430	6	8	
BIBS3508FXMT	50046946	9.250	8	10	
BIBS35010FXMT	50046947	11.070	10	12	
BIBS35012FXMT	50046948	12.890	12	14	

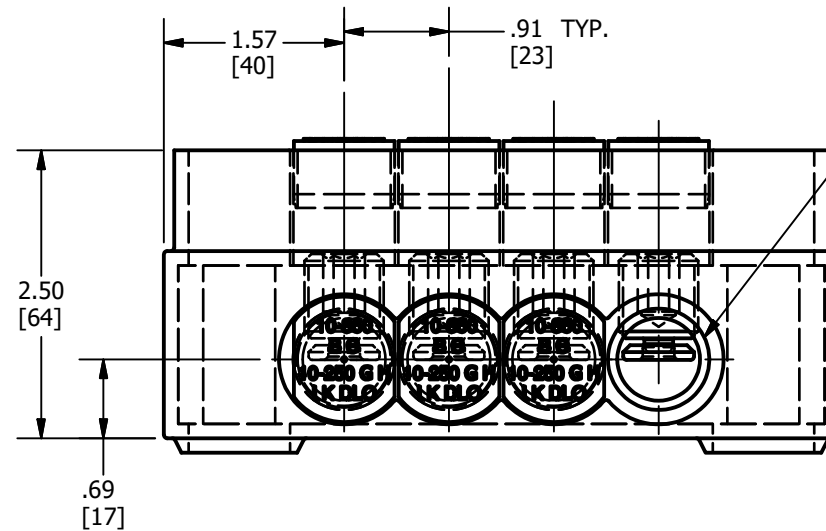
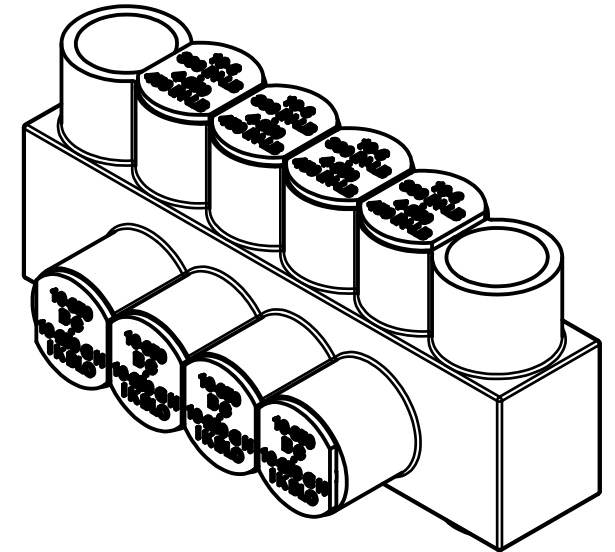
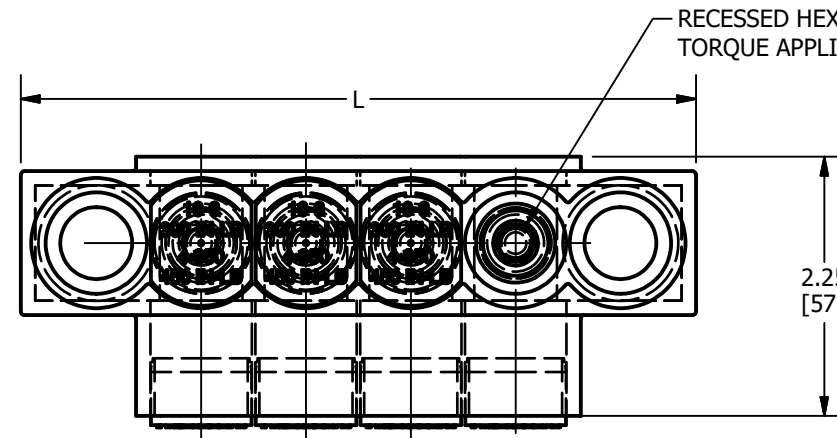
Wire Range	Torque, in-lbs	
#10 - 350 CLASS B,C	#10-4/0	220
#10 - 250 CLASS G, H, I, K, DLO	250-300	450

FEATURES	BENEFITS
PLASTISOL COVERED AL 6060-T6 BODY	SAVES TIME, LOWERS INSTALLATION COST, ELIMINATES TAPING
CLEAR PLASTISOL	ALLOWS VISUAL CONFIRMATION THAT CONDUCTOR IS PROPERLY INSERTED
OXIDE-INHIBITOR IS PREFILLED	INHIBITS MOISTURE AND CONTAMINATES FROM ENTERING THE CONTACT AREA
RANGE-TAKING IN BOTH CODE AND FLEX	REDUCES THE NUMBER OF CONNECTORS CARRIED IN INVENTORY
WIRE AND SCREW PORT COVERS	PROTECTS AGAINST CONTAMINATION AND ACCIDENTAL CONTACT OF ENERGIZED PARTS.
WIRE RANGE AND TORQUE REQUIREMENTS PRINTED ONTO THE CAPS	ALLOWS FOR EASY REFERENCE TO IMPORTANT INSTALLATION INFORMATION
UNIQUE DISC PAD SCREW	IMPROVES WIRE CONTACT AREA

NOTES:

- DIMENSIONS IN BRACKETS [] ARE IN MILLIMETERS ROUNDED OFF TO THE NEAREST MILLIMETER, UNLESS OTHERWISE SPECIFIED AND ARE FOR REFERENCE ONLY.
- THIS DRAWING TO BE INTERPRETED PER ASME Y14.5M-2009.
- MATERIAL: BODY - TIN PLATED ALUMINUM
SCREW - CLEAR COATED ALUMINUM
INSULATION - PLASTISOL
CAPS - POLYETHYLENE
- OPERATING TEMPERATURE - -40°C TO 135°C.
- VOLTAGE RATING - 600 V.
- AMPERAGE RATING - 350 A. VALUES BASED ON NFPA 70, TABLE 310.15(B)(16). VALUES MAY VARY BASED UPON AMBIENT CONDITIONS AND CONDUCTOR PROPERTIES.

REV	DATE	DESCRIPTION	ECO	BY	C'H'K.
C	11/09/208	UPDATED TABLE INFO	50268	JL	TR



"N" WIRE PORTS

SCREW PORT CAP

ALUMINUM CONDUCTIVE BAR

DISC PAD SCREW

WIRE PORT CAP

INSULATION

LISTED TO 486A-B, FILE E9498

CERTIFIED TO C22.2, NO. 65, FILE 042860_C_000

BIBS 350 3 FX MT MOUNTED
 FLEX CONDUCTOR RATED
 WIRE PORTS (SEE COLUMN "N" IN TABLE)
 WIRE SIZE ACCOMODATED (AL/CU) STR.
 BURNDY INSULATED BLOCK
 SINGLE SIDE ENTRY

TO ORDER BURNDY® PRODUCTS CALL

UNITED STATES
1-800-346-4175 (LONDONDERRY, NH)

CANADA:
1-800-361-6975 (QUEBEC)
1-800-387-6487 (ALL OTHER PROVINCES)

FOR PRODUCT INFO: <http://www.burndy.com>

FULLY INSULATED DISTRIBUTION BLOCKS-UNITAP™

ITEM NO: SEE TABLE

CAT. NO: SEE TABLE

DRAWN BY: S.BALARAMAN 9/4/2014

CHECKER: T.REYNOLDS 12/17/2015

DSN APRVL: T.REYNOLDS 12/17/2015

MFG APRVL: --

QA APRVL: C.KOWALCZYK 12/20/2015

MKT APRVL: M.BAILLY 12/20/2015

PROJ #: --

REL LEVEL: Released



DRAWING NO

50050187

REV

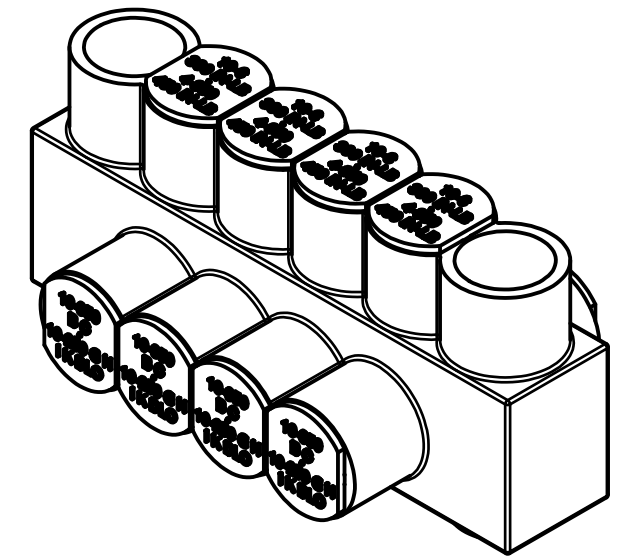
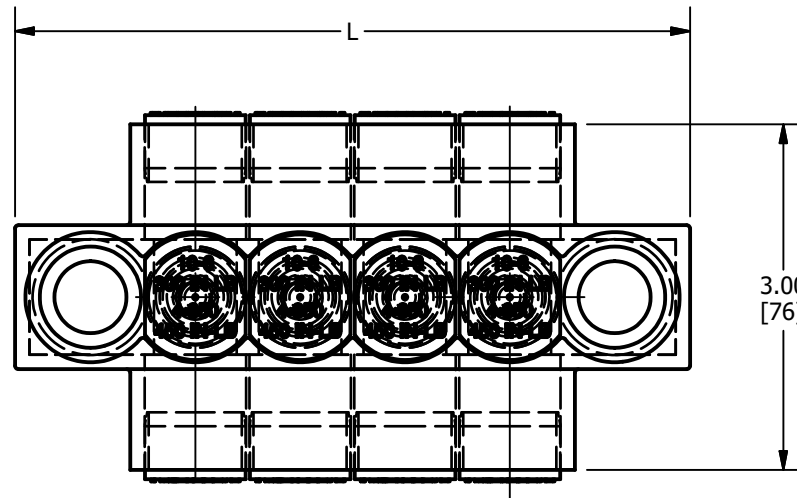
C

SHEET 5 OF 8

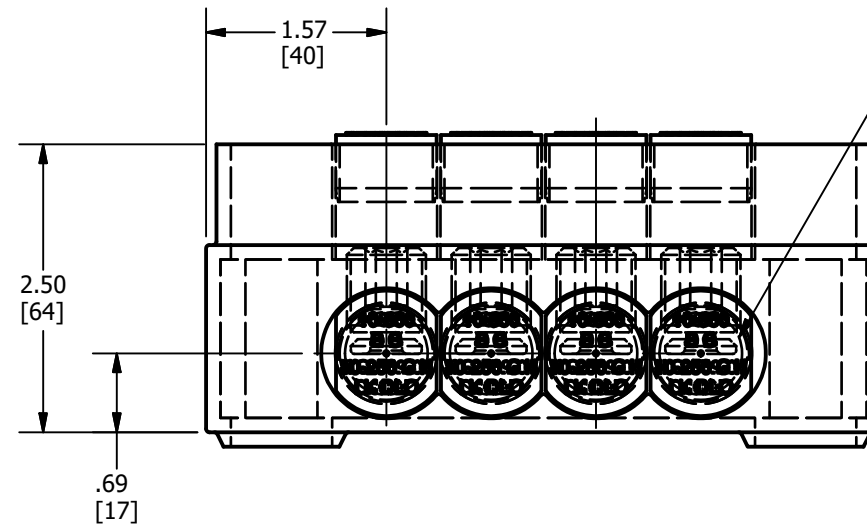
CATALOG NUMBER	ITEM NUMBER	L	N	M	COLOR CODE
BIBD3504FXMT	50046969	5.610	4	6	RED
BIBD3506FXMT	50046970	7.430	6	8	
BIBD3508FXMT	50046971	9.250	8	10	
BIBD35010FXMT	50046972	11.070	10	12	
BIBD35012FXMT	50046973	12.890	12	14	

Wire Range	Torque, in-lbs	
#10 - 350 CLASS B, C	#10-4/0	220
#10 - 250 CLASS G, H, I, K, DLO	250-300	450

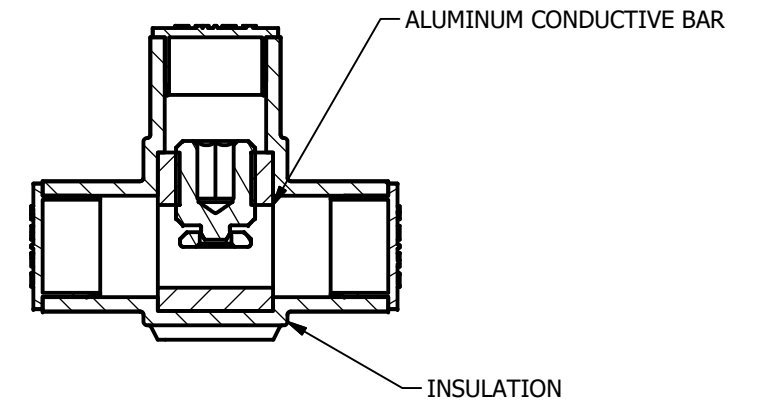
REV	DATE	DESCRIPTION	ECO	BY	C'H'K.
C	11/09/208	UPDATED TABLE INFO	50268	JL	TR



FEATURES	BENEFITS
PLASTISOL COVERED AL 6060-T6 BODY	SAVES TIME, LOWERS INSTALLATION COST, ELIMINATES TAPING
CLEAR PLASTISOL	ALLOWS VISUAL CONFIRMATION THAT CONDUCTOR IS PROPERLY INSERTED
OXIDE-INHIBITOR IS PREFILLED	INHIBITS MOISTURE AND CONTAMINATES FROM ENTERING THE CONTACT AREA
RANGE-TAKING IN BOTH CODE AND FLEX	REDUCES THE NUMBER OF CONNECTORS CARRIED IN INVENTORY
WIRE AND SCREW PORT COVERS	PROTECTS AGAINST CONTAMINATION AND ACCIDENTAL CONTACT OF ENERGIZED PARTS.
WIRE RANGE AND TORQUE REQUIREMENTS PRINTED ONTO THE CAPS	ALLOWS FOR EASY REFERENCE TO IMPORTANT INSTALLATION INFORMATION
UNIQUE DISC PAD SCREW	IMPROVES WIRE CONTACT AREA



"N" WIRE PORTS



LISTED TO 486A-B, FILE E9498

CERTIFIED TO C22.2, NO. 65, FILE 042860_C_000

BIBD 350 3 FX MT MOUNTED
 FLEX CONDUCTOR RATED
 WIRE PORTS (SEE COLUMN "N" IN TABLE)
 WIRE SIZE ACCOMODATED (AL/CU) STR.
 BURNDY INSULATED BLOCK
 DOUBLE SIDE ENTRY

NOTES:

- DIMENSIONS IN BRACKETS [] ARE IN MILLIMETERS ROUNDED OFF TO THE NEAREST MILLIMETER, UNLESS OTHERWISE SPECIFIED AND ARE FOR REFERENCE ONLY.
- THIS DRAWING TO BE INTERPRETED PER ASME Y14.5M-2009.
- MATERIAL: BODY - TIN PLATED ALUMINUM
 SCREW - CLEAR COATED ALUMINUM
 INSULATION - PLASTISOL
 CAPS - POLYETHOLENE
- OPERATING TEMPERATURE - -40°C TO 135°C.
- VOLTAGE RATING - 600 V.
- AMPERAGE RATING - 350 A. VALUES BASED ON NFPA 70, TABLE 310.15(B)(16). VALUES MAY VARY BASED UPON AMBIENT CONDITIONS AND CONDUCTOR PROPERTIES.

TO ORDER BURNDY® PRODUCTS CALL
 UNITED STATES
 1-800-346-4175 (LONDONDERRY, NH)
 CANADA:
 1-800-361-6975 (QUEBEC)
 1-800-387-6487 (ALL OTHER PROVINCES)
 FOR PRODUCT INFO: <http://www.burndy.com>

FULLY INSULATED DISTRIBUTION BLOCKS-UNITAP™	
ITEM NO: SEE TABLE	
CAT. NO: SEE TABLE	
DRAWN BY: S.BALARAMAN	9/4/2014
CHECKER: T.REYNOLDS	12/17/2015
DSN APRVL: T.REYNOLDS	12/17/2015
MFG APRVL: --	--
QA APRVL: C.KOWALCZYK	12/20/2015
MKT APRVL: M.BAILLY	12/20/2015
PROD FAM: --	DRAWING NO
PROJECT #: --	50050187
DOCUMENT TYPE: SALES	SIZE
REL LEVEL: Released	B
	REV
	C
	SHEET 6 OF 8



CATALOG NUMBER	ITEM NUMBER	L	N	M	COLOR CODE
BIBS6004FXMT	50046950	7.593	4	6	GREEN
BIBS6006FXMT	50046951	10.155	6	8	
BIBS6008FXMT	50046952	12.717	8	10	
BIBS60010FXMT	50046963	15.279	10	12	
BIBS60012FXMT	50046954	17.841	12	14	

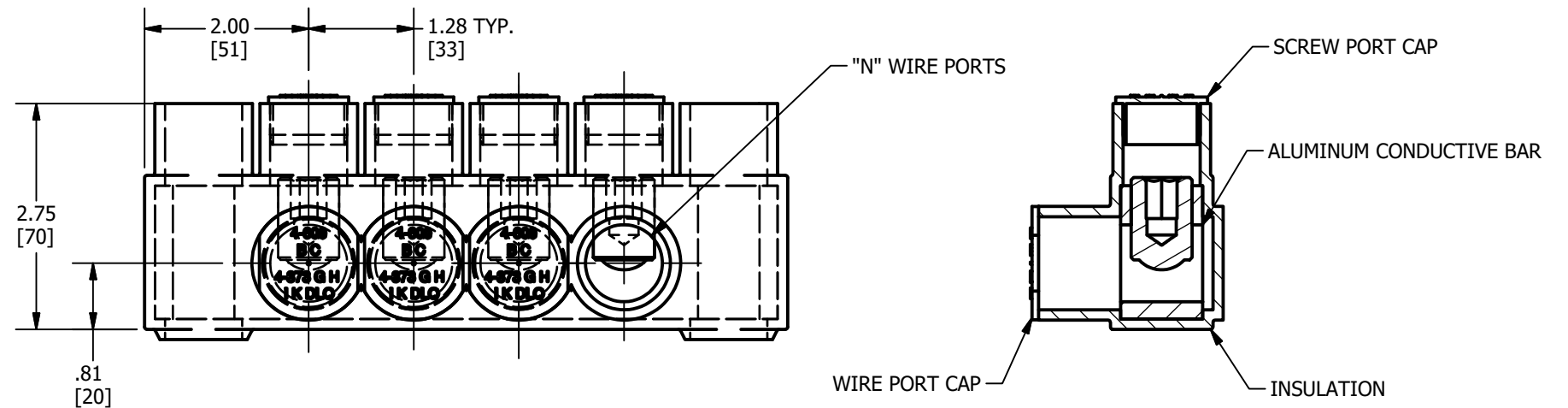
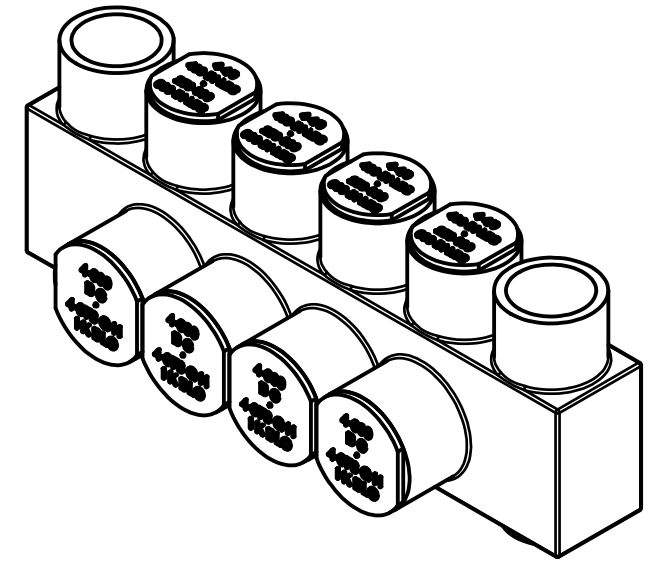
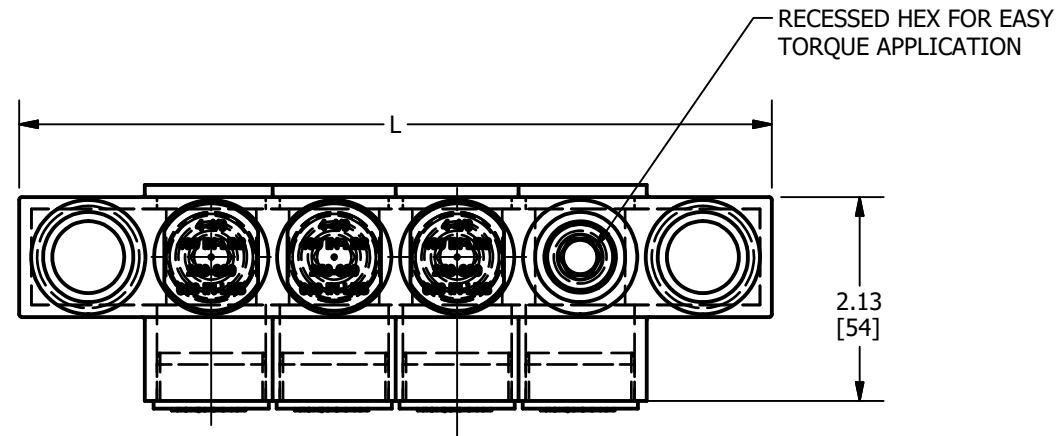
Wire Range	Torque, in-lbs
#4 - 600 CLASS B,C #4 - 373 CLASS G, H, I, K, DLO	375

FEATURES	BENEFITS
PLASTISOL COVERED AL 6060-T6 BODY	SAVES TIME, LOWERS INSTALLATION COST, ELIMINATES TAPING
CLEAR PLASTISOL	ALLOWS VISUAL CONFIRMATION THAT CONDUCTOR IS PROPERLY INSERTED
OXIDE-INHIBITOR IS PREFILLED	INHIBITS MOISTURE AND CONTAMINATES FROM ENTERING THE CONTACT AREA
RANGE-TAKING IN BOTH CODE AND FLEX	REDUCES THE NUMBER OF CONNECTORS CARRIED IN INVENTORY
WIRE AND SCREW PORT COVERS	PROTECTS AGAINST CONTAMINATION AND ACCIDENTAL CONTACT OF ENERGIZED PARTS.
WIRE RANGE AND TORQUE REQUIREMENTS PRINTED ONTO THE CAPS	ALLOWS FOR EASY REFERENCE TO IMPORTANT INSTALLATION INFORMATION
UNIQUE DISC PAD SCREW	IMPROVES WIRE CONTACT AREA

NOTES:

- DIMENSIONS IN BRACKETS [] ARE IN MILLIMETERS ROUNDED OFF TO THE NEAREST MILLIMETER, UNLESS OTHERWISE SPECIFIED AND ARE FOR REFERENCE ONLY.
- THIS DRAWING TO BE INTERPRETED PER ASME Y14.5M-2009.
- MATERIAL: BODY - TIN PLATED ALUMINUM
SCREW - CLEAR COATED ALUMINUM
INSULATION - PLASTISOL
CAPS - POLYETHOLENE
- OPERATING TEMPERATURE - -40°C TO 135°C.
- VOLTAGE RATING - 600 V.
- AMPERAGE RATING - 475 A. VALUES BASED ON NFPA 70, TABLE 310.15(B)(16). VALUES MAY VARY BASED UPON AMBIENT CONDITIONS AND CONDUCTOR PROPERTIES.

REV	DATE	DESCRIPTION	ECO	BY	C'H'K.
C	11/09/208	UPDATED TABLE INFO	50268	JL	TR



UL LISTED TO 486A-B, FILE E9498

CS CERTIFIED TO C22.2, NO. 65, FILE 042860_C_000

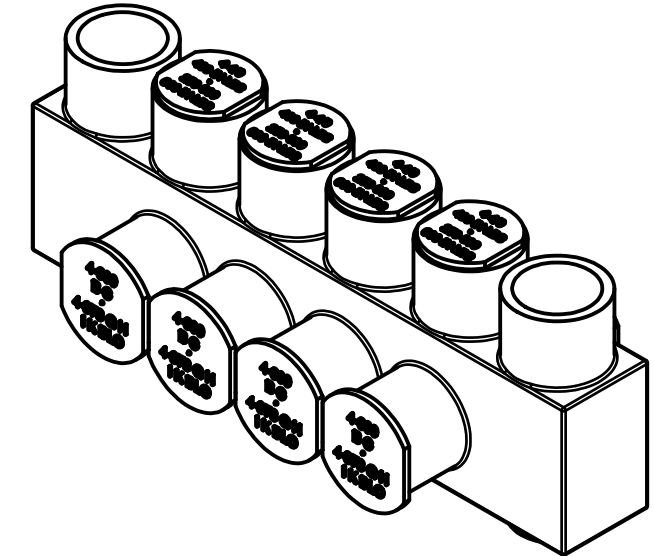
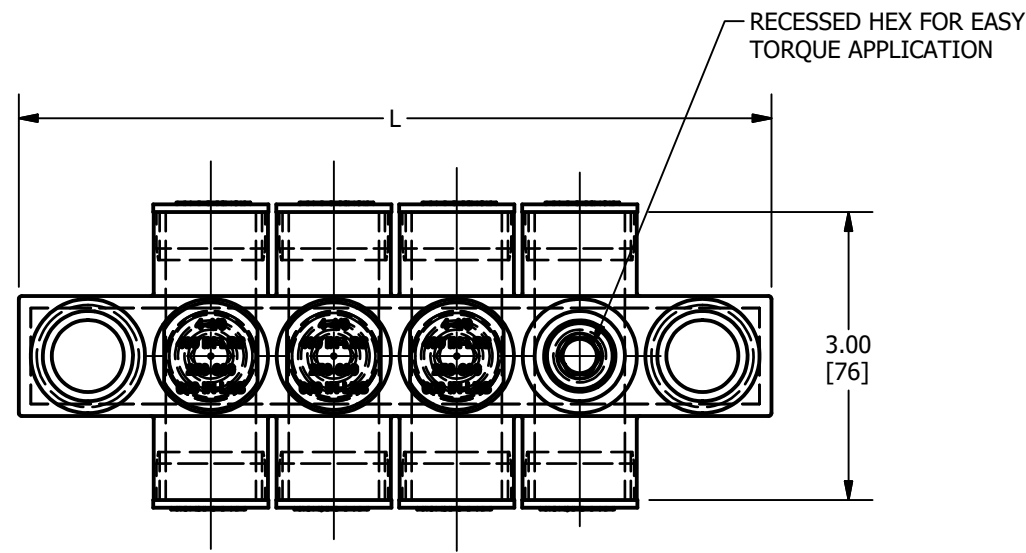
BIBS 600 3 FX MT MOUNTED
 FLEX CONDUCTOR RATED
 WIRE PORTS (SEE COLUMN "N" IN TABLE)
 WIRE SIZE ACCOMODATED (AL/CU) STR.
 BURNDY INSULATED BLOCK
 SINGLE SIDE ENTRY

TO ORDER BURNDY® PRODUCTS CALL		FULLY INSULATED DISTRIBUTION BLOCKS-UNITAP™	
UNITED STATES 1-800-346-4175 (LONDONDERRY, NH)		ITEM NO: SEE TABLE	
CANADA: 1-800-361-6975 (QUEBEC) 1-800-387-6487 (ALL OTHER PROVINCES)		CAT. NO: SEE TABLE	
FOR PRODUCT INFO: http://www.burndy.com		DRAWN BY: S.BALARAMAN 9/4/2014	
		CHECKER: T.REYNOLDS 12/17/2015	
		DSN APRVL: T.REYNOLDS 12/17/2015	
		MFG APRVL: --	
		QA APRVL: C.KOWALCZYK 12/20/2015	
		MKT APRVL: M.BAILLY 12/20/2015	
		PROD FAM: --	
		DRAWING NO	
		50050187	
		REV	
		C	
		SHEET 7 OF 8	

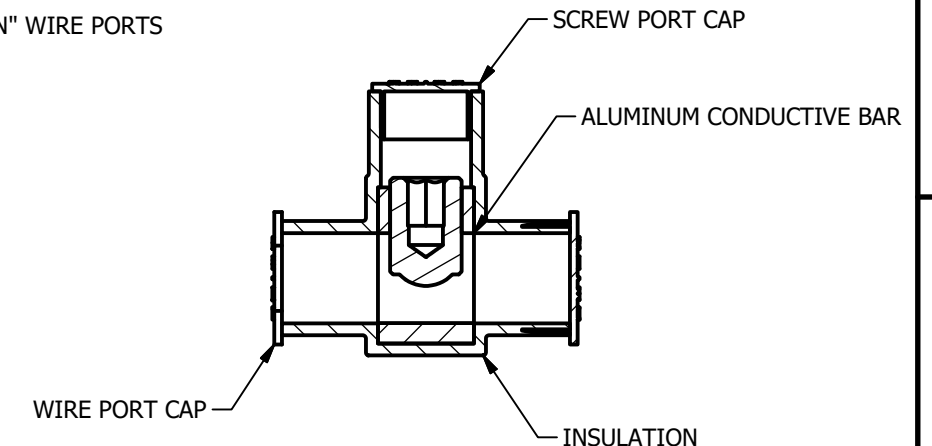
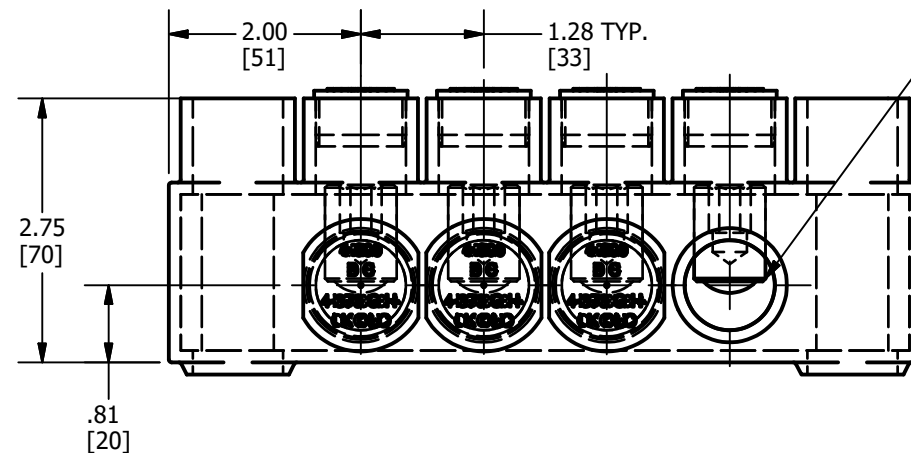
CATALOG NUMBER	ITEM NUMBER	L	N	M	COLOR CODE
BIBD6004FXMT	50046975	7.593	4	6	GREEN
BIBD6006FXMT	50046976	10.155	6	8	
BIBD6008FXMT	50046977	12.717	8	10	
BIBD60010FXMT	50046978	15.279	10	12	
BIBD60012FXMT	50046979	17.841	12	14	

Wire Range	Torque, in-lbs
#4 - 600 CLASS B,C #4 - 373 CLASS G, H, I, K, DLO	375

REV	DATE	DESCRIPTION	ECO	BY	C'H'K.
C	11/09/208	UPDATED TABLE INFO	50268	JL	TR



FEATURES	BENEFITS
PLASTISOL COVERED AL 6060-T6 BODY	SAVES TIME, LOWERS INSTALLATION COST, ELIMINATES TAPING
CLEAR PLASTISOL	ALLOWS VISUAL CONFIRMATION THAT CONDUCTOR IS PROPERLY INSERTED
OXIDE-INHIBITOR IS PREFILLED	INHIBITS MOISTURE AND CONTAMINATES FROM ENTERING THE CONTACT AREA
RANGE-TAKING IN BOTH CODE AND FLEX	REDUCES THE NUMBER OF CONNECTORS CARRIED IN INVENTORY
WIRE AND SCREW PORT COVERS	PROTECTS AGAINST CONTAMINATION AND ACCIDENTAL CONTACT OF ENERGIZED PARTS.
WIRE RANGE AND TORQUE REQUIREMENTS PRINTED ONTO THE CAPS	ALLOWS FOR EASY REFERENCE TO IMPORTANT INSTALLATION INFORMATION
UNIQUE DISC PAD SCREW	IMPROVES WIRE CONTACT AREA



UL LISTED TO 486A-B, FILE E9498

CS CERTIFIED TO C22.2, NO. 65, FILE 042860_C_000

BIBD 600 3 FX MT MOUNTED
 FLEX CONDUCTOR RATED
 WIRE PORTS (SEE COLUMN "N" IN TABLE)
 WIRE SIZE ACCOMODATED (AL/CU) STR.
 BURNDY INSULATED BLOCK
 DOUBLE SIDE ENTRY

NOTES:

- DIMENSIONS IN BRACKETS [] ARE IN MILLIMETERS ROUNDED OFF TO THE NEAREST MILLIMETER, UNLESS OTHERWISE SPECIFIED AND ARE FOR REFERENCE ONLY.
- THIS DRAWING TO BE INTERPRETED PER ASME Y14.5M-2009.
- MATERIAL: BODY - TIN PLATED ALUMINUM
 SCREW - CLEAR COATED ALUMINUM
 INSULATION - PLASTISOL
 CAPS - POLYETHYLENE
- OPERATING TEMPERATURE - -40°C TO 135°C.
- VOLTAGE RATING - 600 V.
- AMPERAGE RATING - 475 A. VALUES BASED ON NFPA 70, TABLE 310.15(B)(16). VALUES MAY VARY BASED UPON AMBIENT CONDITIONS AND CONDUCTOR PROPERTIES.

TO ORDER BURNDY® PRODUCTS CALL		FULLY INSULATED DISTRIBUTION BLOCKS-UNITAP™	
UNITED STATES 1-800-346-4175 (LONDONDERRY, NH)		ITEM NO: SEE TABLE	
CANADA: 1-800-361-6975 (QUEBEC) 1-800-387-6487 (ALL OTHER PROVINCES)		CAT. NO: SEE TABLE	
FOR PRODUCT INFO: http://www.burndy.com		DRAWN BY: S.BALARAMAN 9/4/2014	
		CHECKER: T.REYNOLDS 12/17/2015	
		DSN APRVL: T.REYNOLDS 12/17/2015	
		MFG APRVL: --	
		QA APRVL: C.KOWALCZYK 12/20/2015	
		MKT APRVL: M.BAILLY 12/20/2015	
		PROJ #: --	
		SIZE	
		DRAWING NO	
		50050187	
		REV	
		C	
		SHEET 8 OF 8	