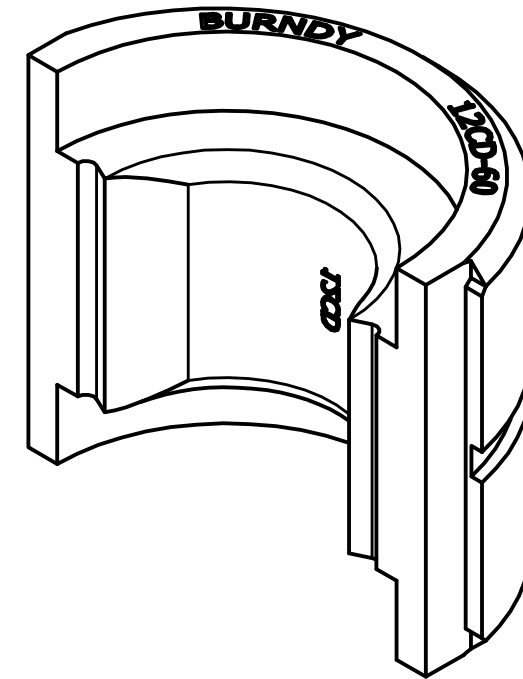
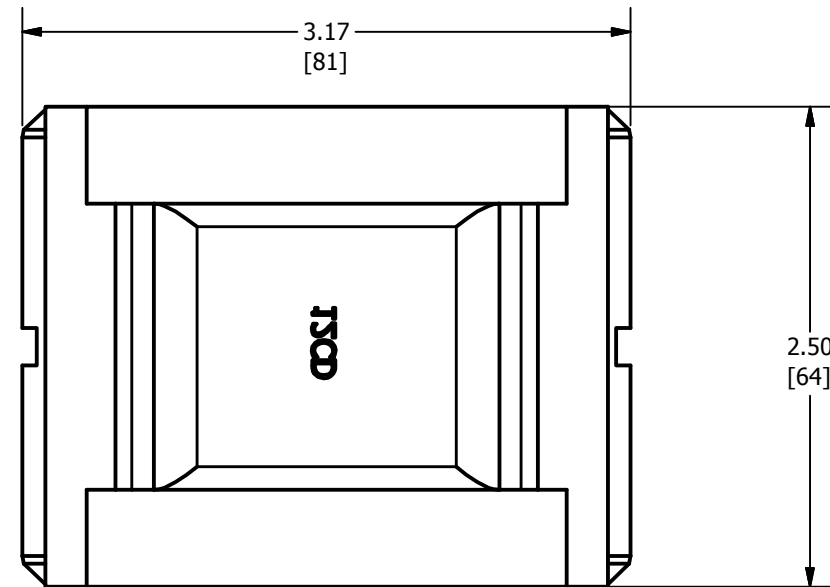
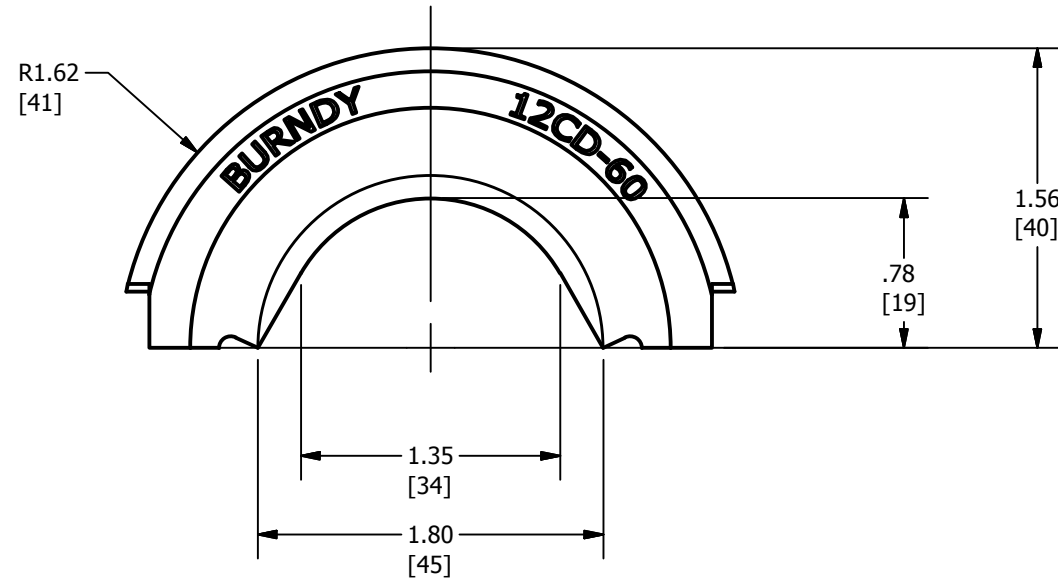


REV	DATE	DESCRIPTION	ECO	BY	C'H'K.
A	10/27/2014	INITIAL RELEASE	38099	MG	RM



NOTES:

1. THIS DRAWING TO BE INTERPRETED PER ASME Y14.5M-2009.
2. DIMENSIONS IN BRACKETS [] ARE IN MILLIMETERS ROUNDED OFF TO THE NEAREST MILLIMETER, UNLESS OTHERWISE SPECIFIED AND ARE FOR REFERENCE ONLY.
3. MATERIAL: STAINLESS STEEL
4. CATALOG NO. 12CD-60 TWIN DIE SET CONSISTS OF TWO SINGLE DIES AS SHOWN.

TO ORDER BURNDY PRODUCTS CALL		12CD-60	
UNITED STATES		ITEM NO: 50047118	
1-800-346-4175 (LONDONDERRY, NH)		CAT. NO: 12CD-60	
CANADA:		DRAWN BY: M.GOPI 10-27-2014	
1-800-361-6975 (QUEBEC)		CHECKER: J.LEFAVOUR 11-24-2014	
1-800-387-6487 (ALL OTHER PROVINCES)		DSN APRVL: J.LEFAVOUR 11-24-2014	
FOR PRODUCT INFO: http://www.burndy.com		MFG APRVL: A.JOHNS 11-22-2014	
		QA APRVL: C.LINDQUIST 12-02-2014	
		MKT APRVL:	
		PROD FAM:	
		DRAWING NO	
		50052504	
		REV	
		A	
		SHEET 1 OF 1	