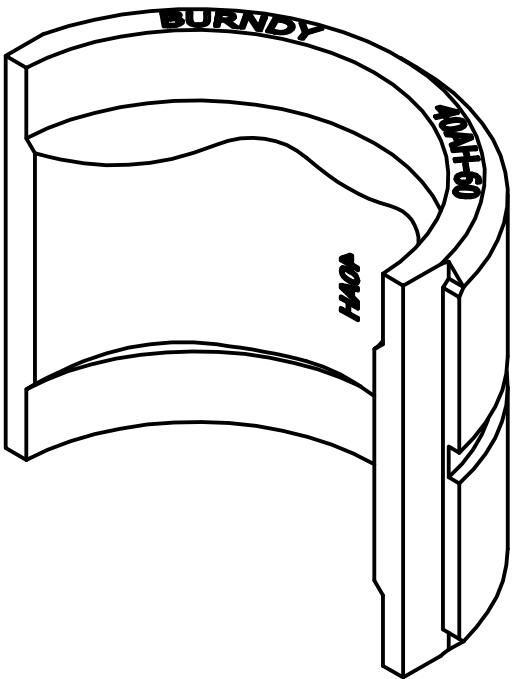
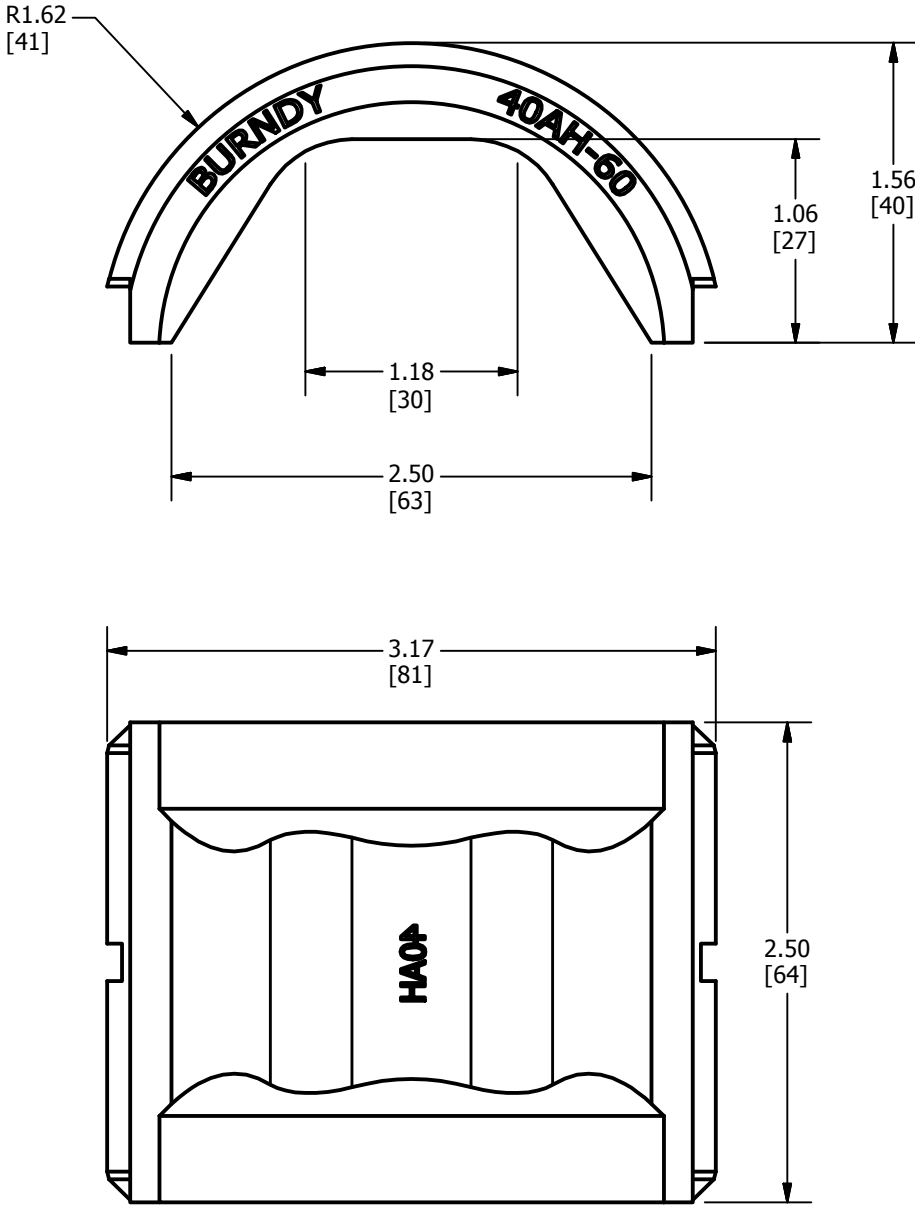


REV	DATE	DESCRIPTION	ECO	BY	C'H'K.
A	10/28/2014	INITIAL RELEASE	38101	MG	RM



NOTES:

1. INTERPRET THIS DRAWING PER ASME 14.5M-2009
2. DIMENSIONS IN BRACKETS [] ARE IN MILLIMETERS ROUNDED OFF TO THE NEAREST MILLIMETER, UNLESS OTHERWISE SPECIFIED AND ARE FOR REFERENCE ONLY.
3. MATERIAL: STAINLESS STEEL
4. CATALOG NO. 40AH-60 TWIN DIE SET CONSISTS OF TWO SINGLE DIES AS SHOWN.

TO ORDER BURNDY® PRODUCTS CALL UNITED STATES 1-800-346-4175 (LONDONDERRY, NH) CANADA: 1-800-361-6975 (QUEBEC) 1-800-387-6487 (ALL OTHER PROVINCES) FOR PRODUCT INFO: http://www.burndy.com		40AH-60	
		ITEM NO: 50047163	
		CAT. NO: 40AH-60	
		DRAWN BY: D. Paquette 06-10-2014	
		CHECKER: J. LEFAVOUR 11-24-2014	
		DSN APRVL: J. LEFAVOUR 11-24-2014	
		MFG APRVL: A. JOHNS 11-22-2014	
		QA APRVL: C. LINDQUIST 12-02-2014	
		MKT APRVL: --	
		PROD FAM: --	DRAWING NO
		PROJECT #: --	REV
		DOCUMENT TYPE: SALES	50052517
		REL LEVEL: Released	A
		SIZE	SHEET 1 OF 1
		B	