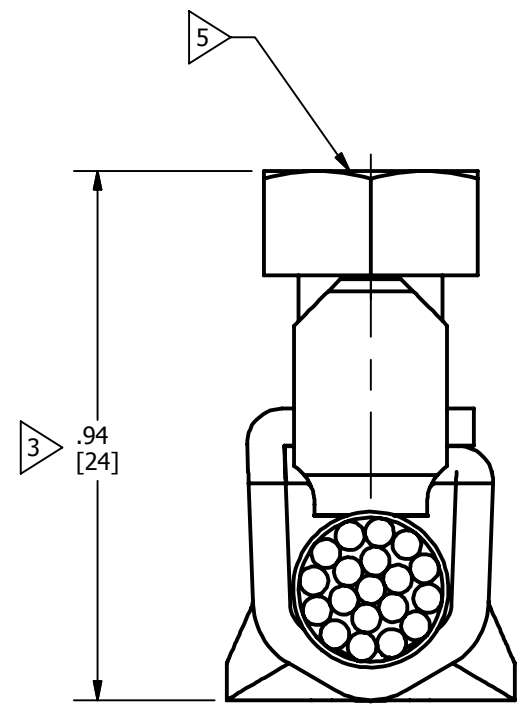
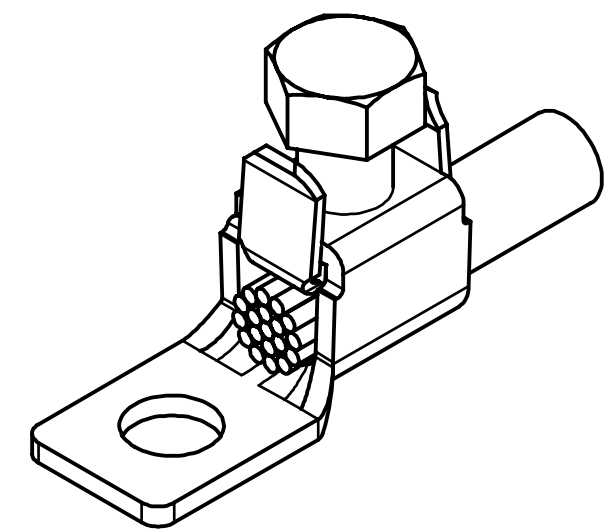
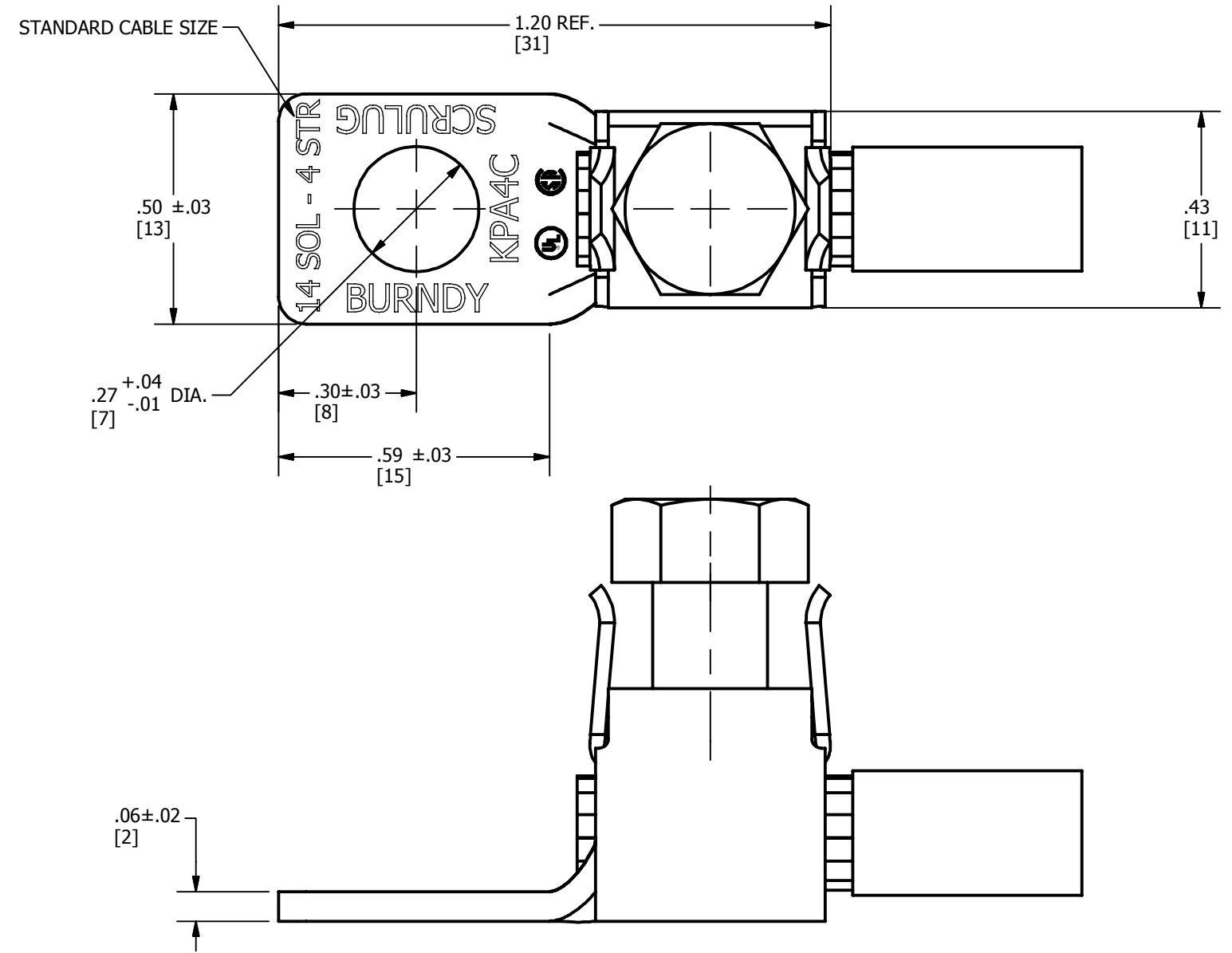


COMMERCIAL CABLE SIZE	NAVY CABLE SIZE	WEIGHT LBS	RECOMMENDED TIGHTENING TORQUE IN-LBS [N-M]
#4 STR (.231) - #14 SOL (.064) 16mm ² STR (5.13 mm DIA.) - 2.5mm ² SOL (1.80mm DIA.)	#23 (.171), #30 (.202), #40 (.226)	.03	35 [4.0]

REV	DATE	DESCRIPTION	ECO	BY	C'H'K.
A	01/28/2015	NEW DRAWING RELEASED	38986	DD	AD



NOTES:

1. MATERIAL: BODY AND PRESSURE BAR - COPPER ALLOY
SCREW - ZINC PLATED STEEL
2. FINISH: TIN PLATED.
3. APPROXIMATE BEFORE COMPRESSION WITH MAXIMUM CABLE IN PLACE.
4. DIMENSIONS IN BRACKETS [] ARE IN MILLIMETERS ROUNDED OFF TO THE NEAREST MILLIMETER, UNLESS OTHERWISE SPECIFIED AND ARE FOR REFERENCE ONLY.
5. SCREW HEAD INK MARKED GREEN.

TO ORDER BURNDY® PRODUCTS CALL		SCRULUG™ ASSEMBLY	
UNITED STATES 1-800-346-4175 (LONDONDERRY, NH)		ITEM NO: 387095	
CANADA: 1-800-361-6975 (QUEBEC) 1-800-387-6487 (ALL OTHER PROVINCES)		CAT. NO: KPA4CHEXGR	
FOR PRODUCT INFO: http://www.burndy.com		DRAWN BY: D DHEENA 1/27/2015	
		CHECKER: T REYNOLDS 2/4/2015	
		DSN APRVL: T REYNOLDS 2/4/2015	
		MFG APRVL: M STEVENS 2/6/2015	
		QA APRVL: C KOWALCZYK 2/11/2015	
		MKT APRVL: M BAILLY 2/4/2015	
		PROJ #: --	
		DRAWING NO	
		50055474	
		REV	
		A	
		SHEET 1 OF 1	