
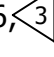
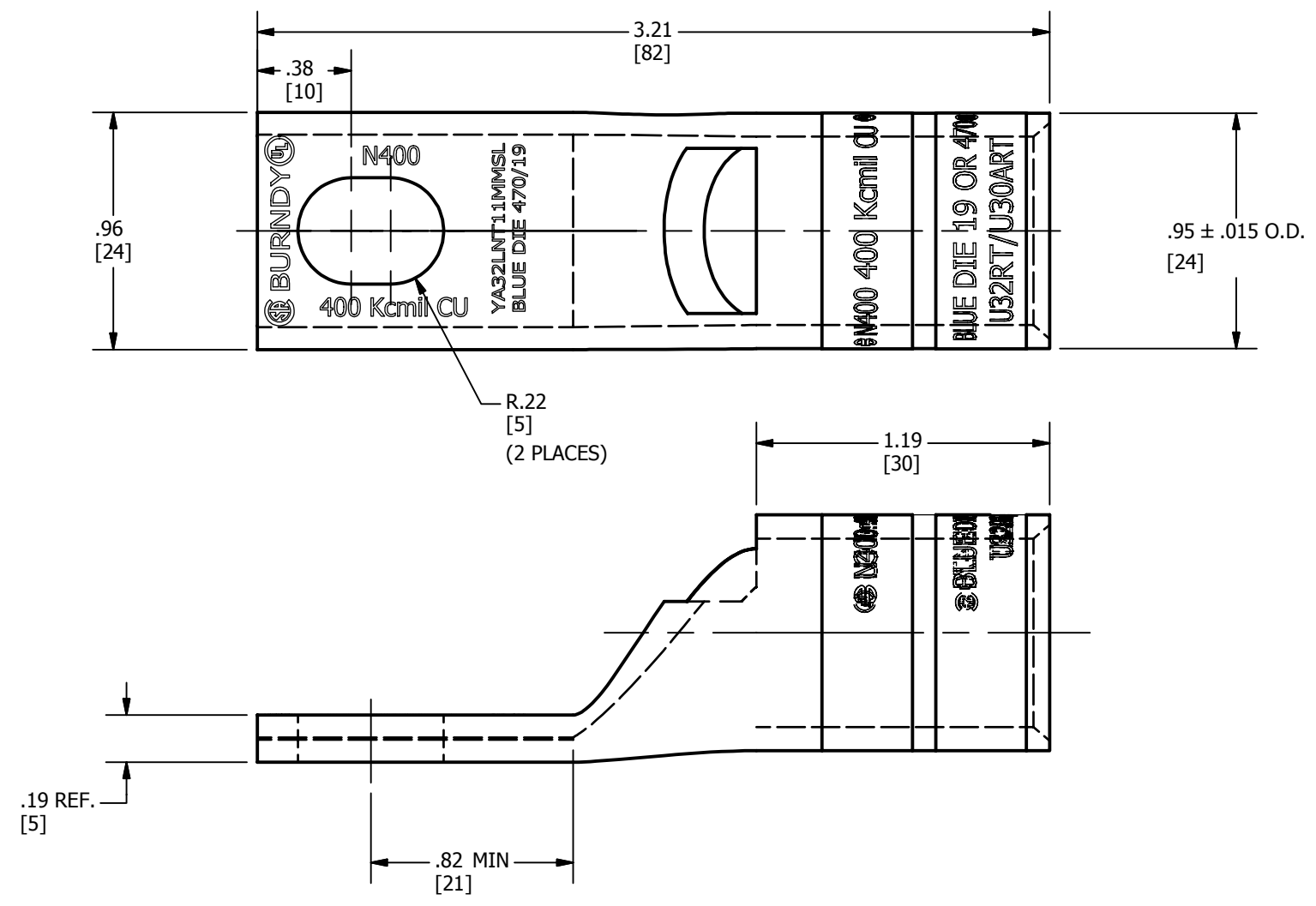


CONDUCTOR	STUD HOLE SIZE	INSTALLATION TOOLING CRIMP				WIRE STRIP LENGTH	DIELESS 
		MECHANICAL	HYDRAULIC	COLOR CODE	DIE INDEX		
AWG		MD6,OUR840, MD7-34R	Y35, Y39 Y750, Y46,  PAT750				
400 KCMIL	1/2"	W32VT (4)	U32RT (2)	BLUE	19	1-1/4"	Y644HSXT(1) Y81KFT (2) Y81KFTMBH (2) PAT81KFT-18V (2)

REV	DATE	DESCRIPTION	ECO	BY	C'H'K.
A	04/29/2015	REDRAW TO INVENTOR	40028	LM	MB



NOTES:

1. MATERIAL: COPPER TUBING.
2. FINISH: ELECTRO TIN-PLATED.
3. CATALOG # PUADP-1 ADAPTOR IS REQUIRED TO USE "U" DIES IN Y46 SERIES TOOLS.
4. Y644HSXT IS NOT RECOMMENDED FOR STANDARD BARREL LENGHT #6 AWG HYLUG™
5. DIMENSIONS IN BRACKETS [] ARE IN MILLIMETERS ROUNDED OFF TO THE NEAREST MILLIMETER, UNLESS OTHERWISE SPECIFIED AND ARE FOR REFERENCE ONLY.

TO ORDER BURNDY® PRODUCTS CALL		HYLUG™	
UNITED STATES 1-800-346-4175 (LONDONDERRY, NH)		ITEM NO: 10083619	
CANADA: 1-800-361-6975 (QUEBEC) 1-800-387-6487 (ALL OTHER PROVINCES)		CAT. NO: YA32LNT11MMSL	
FOR PRODUCT INFO: http://www.burndy.com		DRAWN BY: LOKESH.M 04-29-2015	
		CHECKER: MANIKANDAN.B 04-29-2015	
		DSN APRVL: R ROMAN 05-19-2015	
		MFG APRVL: B MICHAUD 07-24-2015	
		QA APRVL: C KOWALCZYK 05-09-2015	
		MKT APRVL: B MICHAUD 07-24-2015	
		PROD FAM: --	
		DRAWING NO	
		50059334	
		REV	
		A	
		SHEET 1 OF 1	