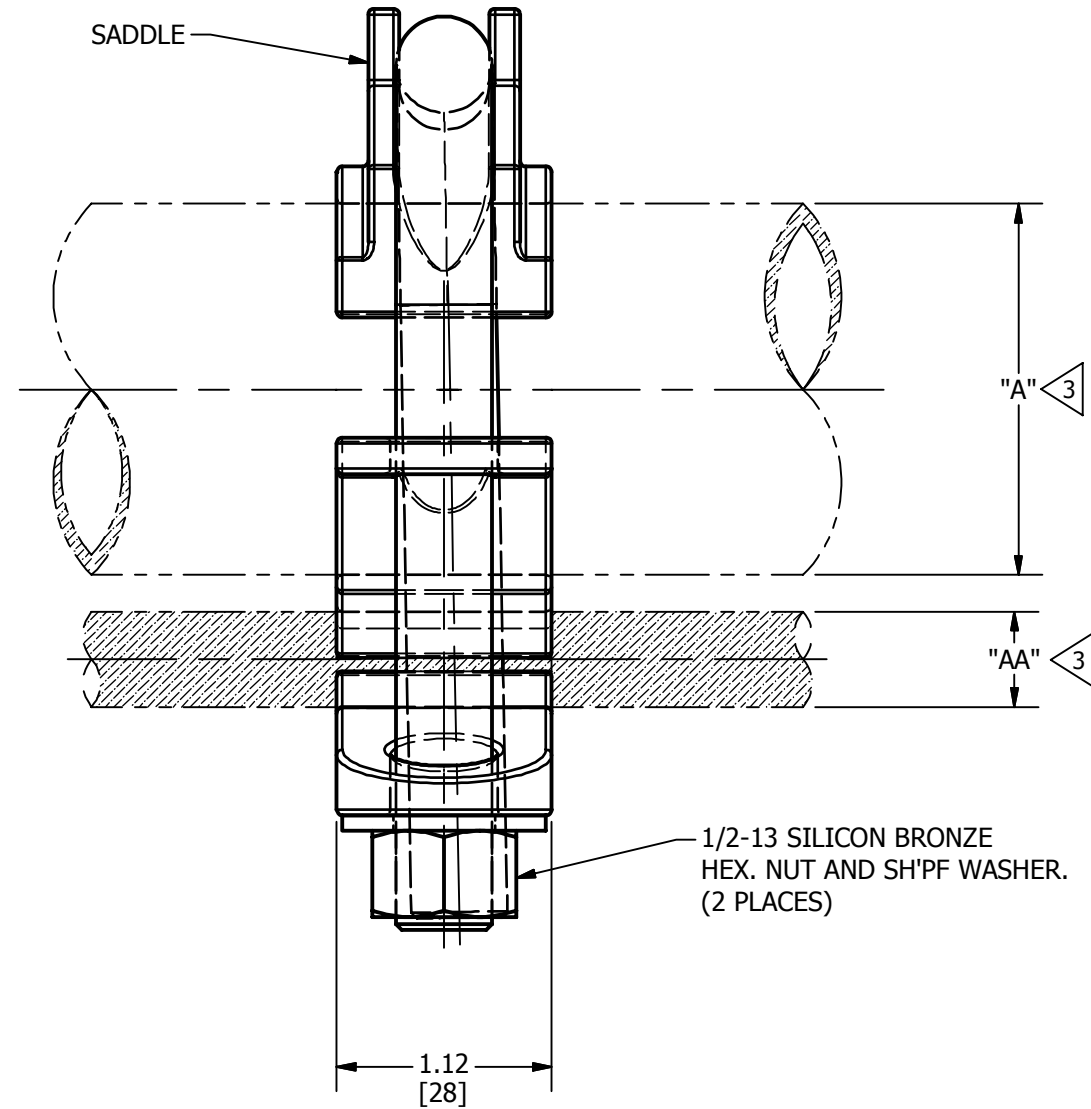
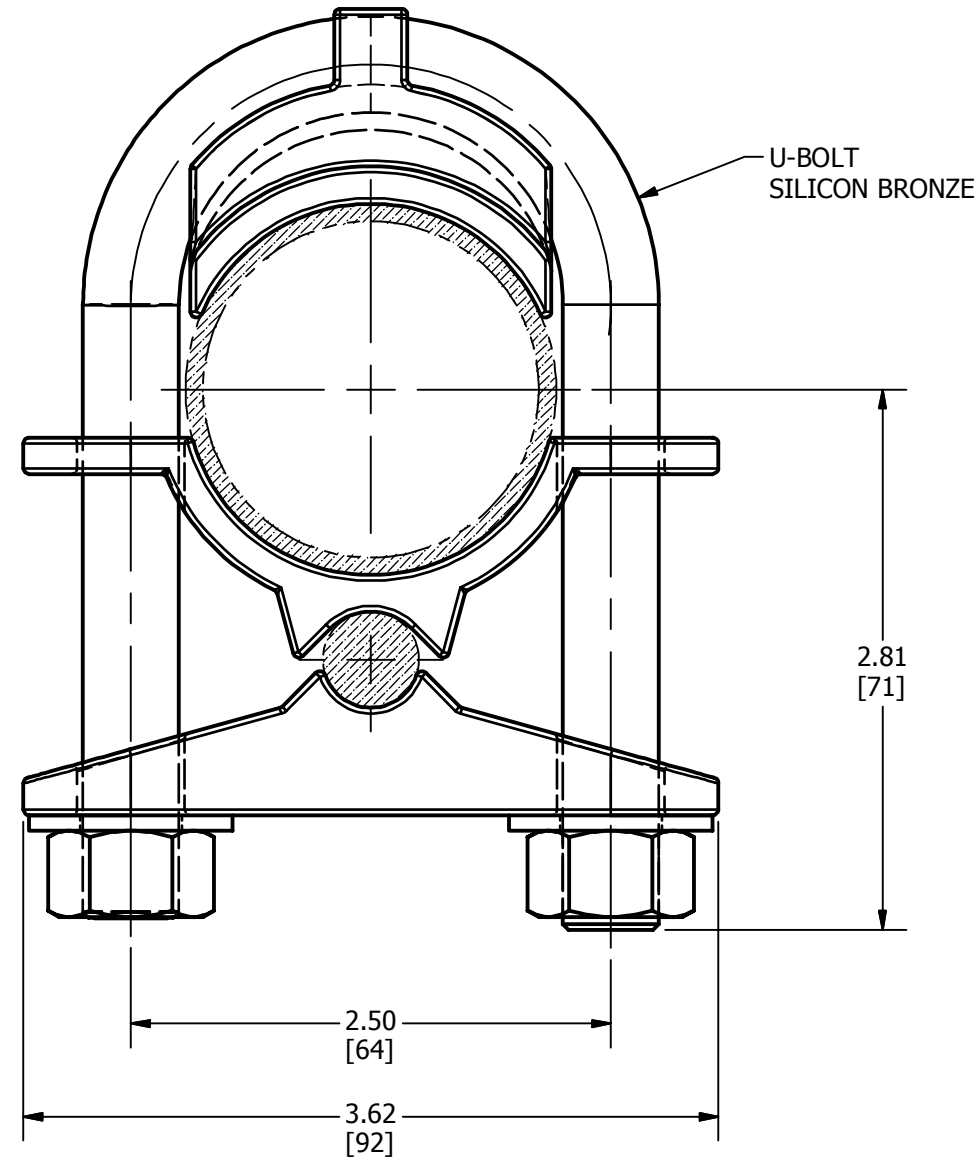


REV	DATE	DESCRIPTION	ECO	BY	CHK.
A	06/30/2015	CREATE SALES DRAWING	40790	DD	MA



NOTES:

1. MATERIAL: CAST COPPER ALLOY.
2. FINISH: ELECTRO-TIN PLATED.

3 ACCOMMODATES:

"A" - 1 1/2" I.P.S. (1.900 [48])
"AA" - 2/0 (.418 [11]) TO 4/0 (.528 [13]) CU. AND ALUM.

4. NOMINAL INSTALLATION TORQUE: 1/2-13 SILICON BRONZE - 480 [55] Lb-in [Nm].
5. DIMENSIONS IN BRACKETS [] ARE IN MILLIMETERS ROUNDED OFF TO THE NEAREST MILLIMETER, UNLESS OTHERWISE SPECIFIED AND ARE FOR REFERENCE ONLY.

TO ORDER BURNDY® PRODUCTS CALL		GROUND CONNECTOR	
UNITED STATES 1-800-346-4175 (LONDONDERRY, NH)		ITEM NO: 27001992	
CANADA: 1-800-361-6975 (QUEBEC) 1-800-387-6487 (ALL OTHER PROVINCES)		CAT. NO: GAR1728CG2	
FOR PRODUCT INFO: http://www.burndy.com		DRAWN BY: D DHEENA 6/30/2015	
		CHECKER: L TROMBLEY 7/16/2015	
		DSN APRVL: L TROMBLEY 7/16/2015	
		MFG APRVL: --	
		QA APRVL: C KOWALCZYK 7/17/2015	
		MKT APRVL: P THERRIEN 7/16/2015	
		PROD FAM: --	
		DRAWING NO	
		50061876	
		REV	
		A	
		SHEET 1 OF 1	