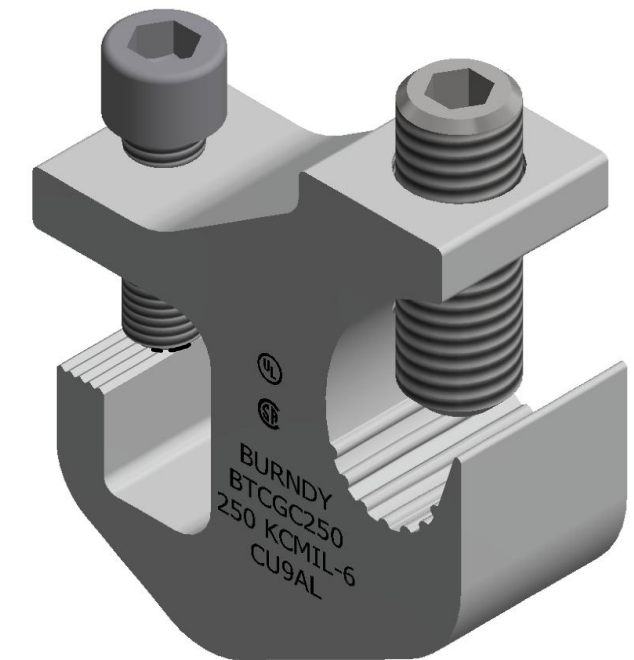
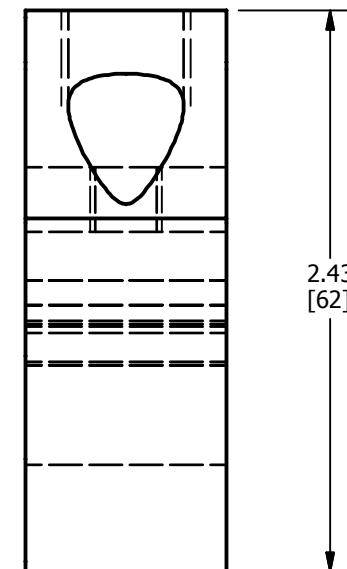
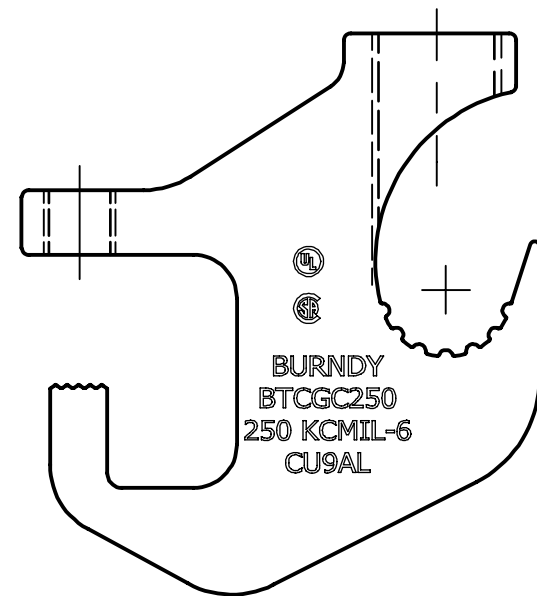
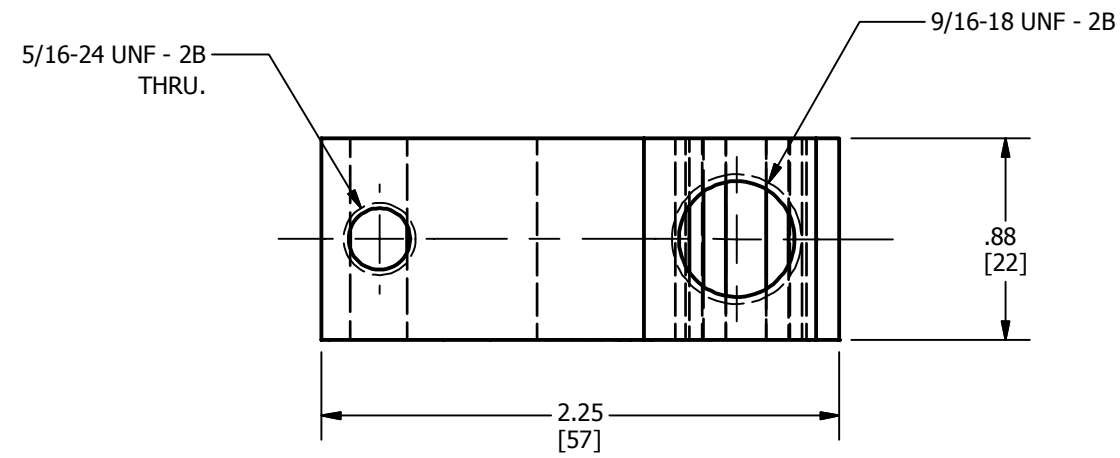


REV	DATE	DESCRIPTION	ECO	BY	C'H.K.
A	06/17/2016	FOCUS FPN1605082	44085	SV	MB



**NOTES:**

1. MATERIAL: ALUMINUM  
FINSH: TIN PLATE  
HARDWARE: STEEL W/.250 HEX. (PREINSTALLED IN CLAMP)
2. ACCOMODATES GROUND WIRE SIZE #6 TO 250 kcmil.
3. TORQUE ON CONDUCTOR: 275 IN LB
4. DIMENSIONS IN BRACKETS [ ] ARE IN MILLIMETERS ROUNDED OFF TO THE NEAREST MILLIMETER, UNLESS OTHERWISE SPECIFIED AND ARE FOR REFERENCE ONLY.

TO ORDER BURNDY® PRODUCTS CALL		TRAY CLAMP	
UNITED STATES 1-800-346-4175 (LONDONDERRY, NH)		ITEM NO: 50072427	
CANADA: 1-800-361-6975 (QUEBEC) 1-800-387-6487 (ALL OTHER PROVINCES)		CAT. NO: BTCGC250	
FOR PRODUCT INFO: <a href="http://www.burndy.com">http://www.burndy.com</a>		DRAWN BY: ARJUN 5/30/2016	
		CHECKER: MANIKANDAN B 5/30/2016	
		DSN APRVL: --	
		MFG APRVL: --	
		QA APRVL: --	
		MKT APRVL: --	
		PROJ FAM: GROUNDING	
		DRAWING NO	
		50072428	
		REV	
		A	
		SHEET 1 OF 1	