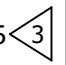
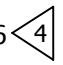
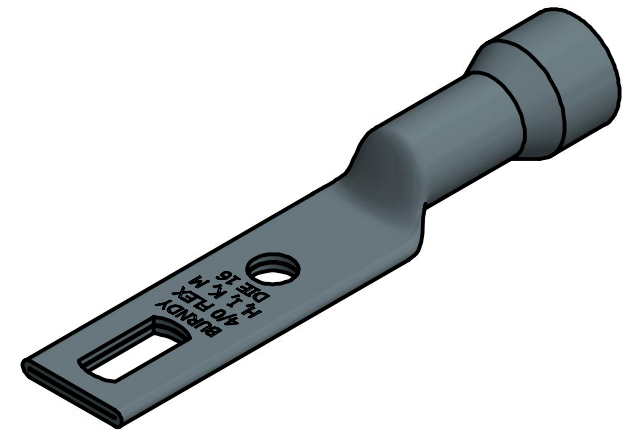
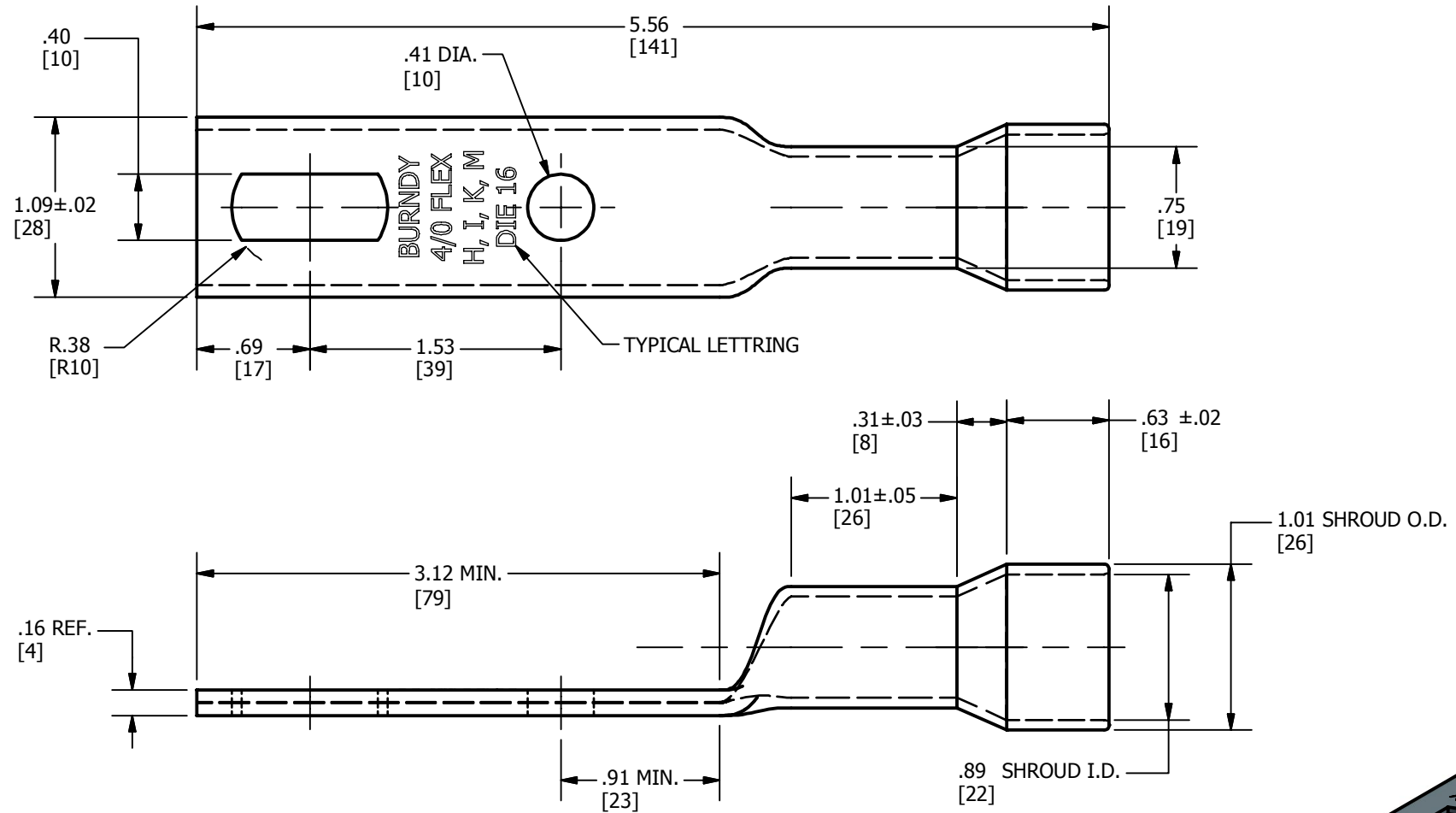




REV	DATE	DESCRIPTION	ECO	BY	C'H'K.
A	6/28/2016	DRAWING RELEASED	44223	RM	RG

CONDUCTOR AWG	DIE INDEX	TOOLS, DIE SET CATALOG NUMBER, & (# OF CRIMPS)			
		MD7, MD6	Y35, Y750	Y45 	Y46 
4/0 CLASS H, I, K, M DLO	16	W29RT (2)	U29RT (1)	U29RT (1)	U29RT (1)
	1024	--	U30D1 Y34PR2 (1)	U30D1 Y34PR2 (1)	U30D1 Y34PR2 (1)



**NOTES:**

1. MATERIAL: COPPER TUBING
2. FINISH: BRITE - DIP LEAD PLATED.
- 3  CATALOG # PT-6515 ADAPTOR IS REQUIRED TO USE "U" DIES IN Y45 SERIES TOOLS.
- 4  CATALOG # PUADP-1 ADAPTOR IS REQUIRED TO USE "U" DIES IN Y46 SERIES TOOLS.
5. DIMENSIONS IN BRACKETS [ ] ARE IN MILLIMETERS ROUNDED OFF TO THE NEAREST MILLIMETER, UNLESS OTHERWISE NOTED, AND ARE FOR REFERENCE ONLY.
6. APPROXIMATE WEIGHT: 0.254LBS

TO ORDER BURNDY PRODUCTS CALL		HYSEALUG™	
UNITED STATES		ITEM NO: 27006996	
1-800-346-4175 (LONDONDERRY, NH)		CAT. NO: YA292LH75CG3	
CANADA:		DRAWN BY: RAJESHKUMAR, M 6/29/2016	
1-800-361-6975 (QUEBEC)		CHECKER: R. RICHARD 7/8/2016	
1-800-387-6487 (ALL OTHER PROVINCES)		DSN APRVL: R. RICHARD 7/12/2016	
FOR PRODUCT INFO: <a href="http://www.burndy.com">http://www.burndy.com</a>		MFG APRVL: --	
		QA APRVL: W. TIMOTHY 7/8/2016	
		MKT APRVL: M. BEN 7/8/2016	
PROD FAM: C&I COMPRESSION	DRAWING NO	REV	
PROJECT #: --	SIZE	50073249	A
DOCUMENT TYPE: SALES	B	SHEET 1 OF 1	
REL LEVEL: Released			