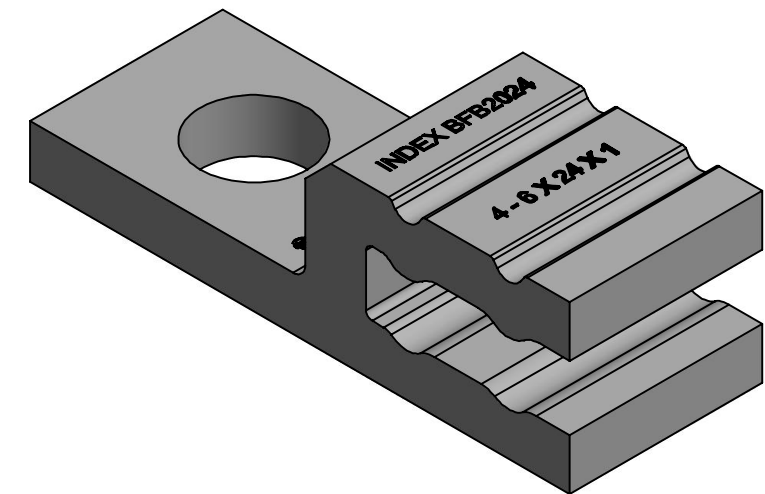
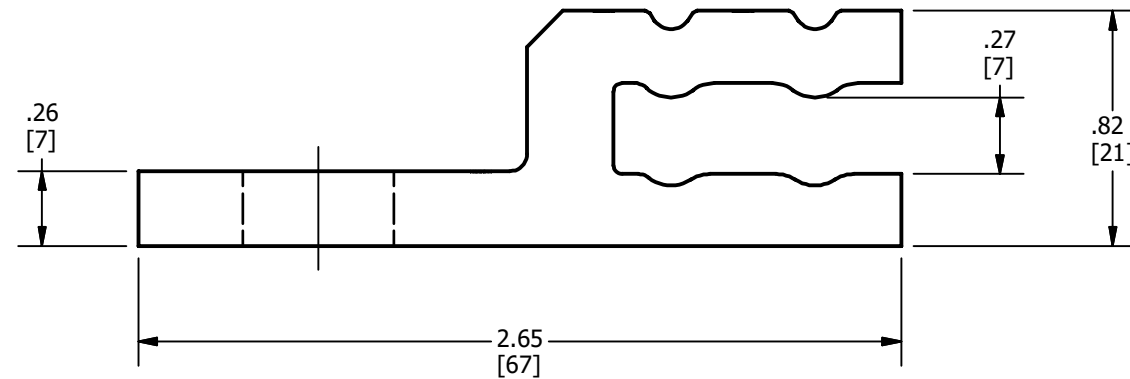
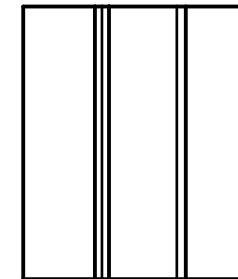
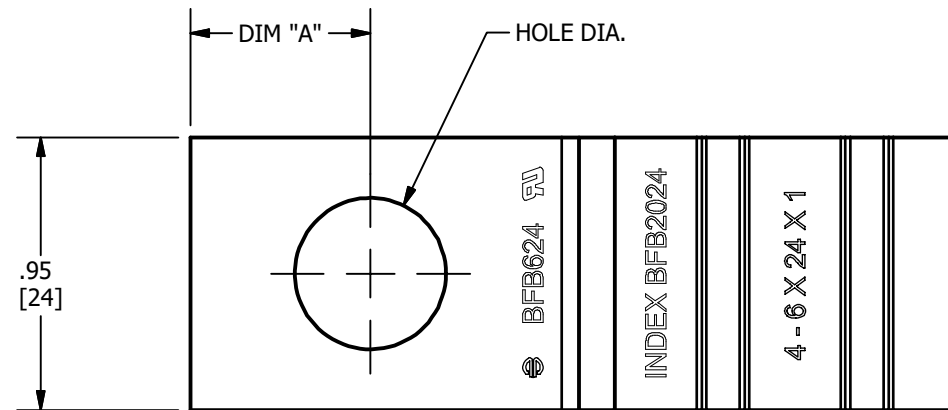


PT NO.	CATALOG NUMBER	HOLE DIAMETER	DIMENSION "A"
1	BFB624T14	.33[8]	.35[9]
2	BFB624T38	.41[10]	.50[13]
3	BFB624T12	.53[13]	.62[16]

REV	DATE	DESCRIPTION	ECO	BY	C'H'K.
C	07/26/2019	MARKING DETAILS AND NOTE # 4 UPDATED. CATALOG # BFB624T14 & BFB624T38 INCLUDED.	51860	PB	RG



**NOTES:**

- DIMENSIONS IN BRACKETS [ ] ARE IN MILLIMETERS ROUNDED OFF TO THE NEAREST MILLIMETER, UNLESS OTHERWISE SPECIFIED AND ARE FOR REFERENCE ONLY.
- MATERIAL : TIN-PLATED COPPER.
- ACCOMMODATES # SHEETS x SHEET WIDTH X SHEET THICKNESS:  
6 x 24mm x 1mm  
5 x 24mm x 1mm  
4 x 24mm x 1mm
- 2 CRIMPS REQUIRED USING "UBFB2024" DIE SET.

TO ORDER BURNDY® PRODUCTS CALL		FLEXIBLE BUS CONNECTOR 6 X 24MM	
UNITED STATES 1-800-346-4175 (LONDONDERRY, NH)		ITEM NO: --	
CANADA: 1-800-361-6975 (QUEBEC) 1-800-387-6487 (ALL OTHER PROVINCES)		CAT. NO: SEE TABLE	
FOR PRODUCT INFO: <a href="http://www.burndy.com">http://www.burndy.com</a>		DRAWN BY: C.VIMAL 11/10/2016	
		CHECKER: B.MANIKANDAN 11/10/2016	
		DSN APRVL: L.TROMBLEY 11/16/2016	
		MFG APRVL: J.HEAD 11/18/2016	
		QA APRVL: T.WATTS 11/17/2016	
		MKT APRVL: --	
		PROJ #: --	
		SIZE: B	
		DRAWING NO: 50077538	
		REV: C	
		SHEET 1 OF 1	