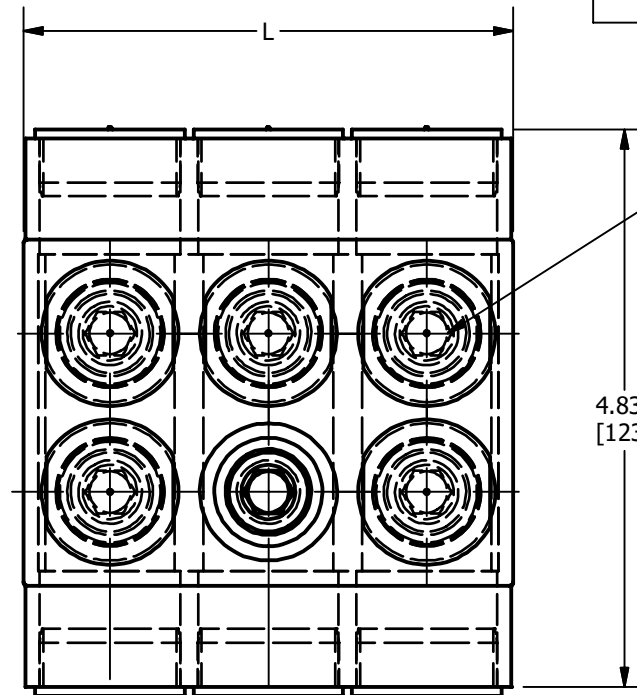
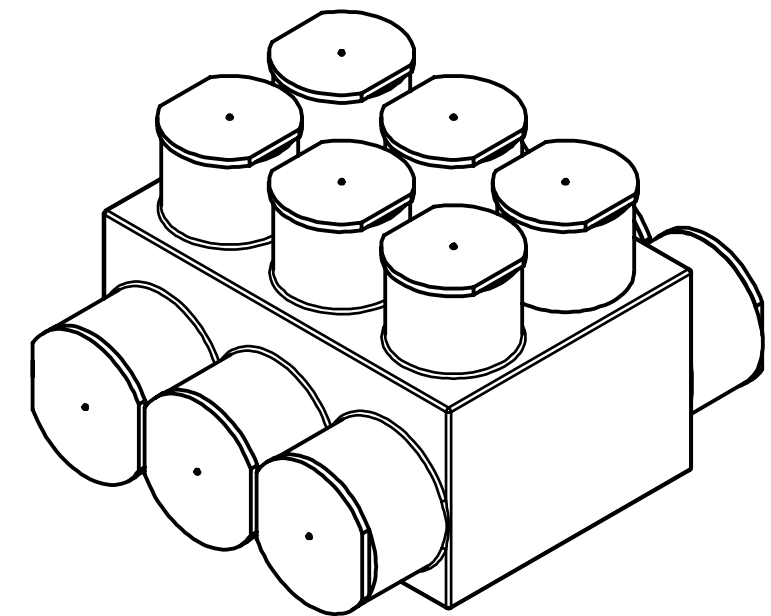
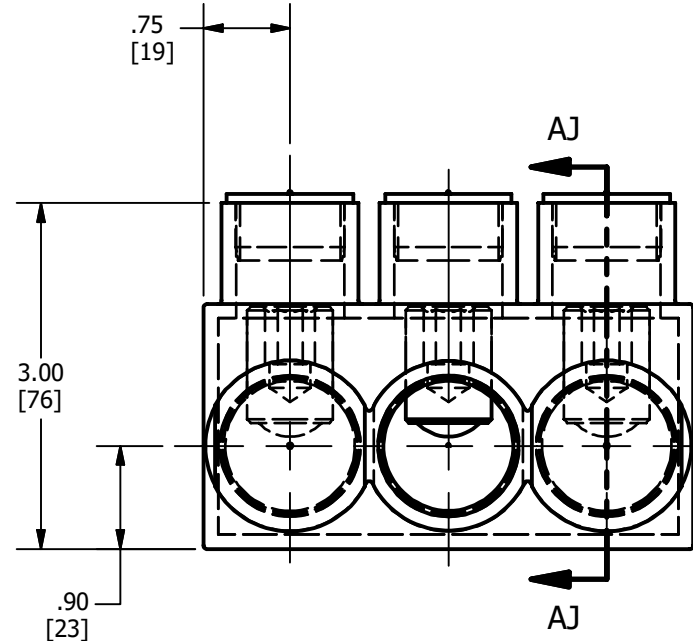
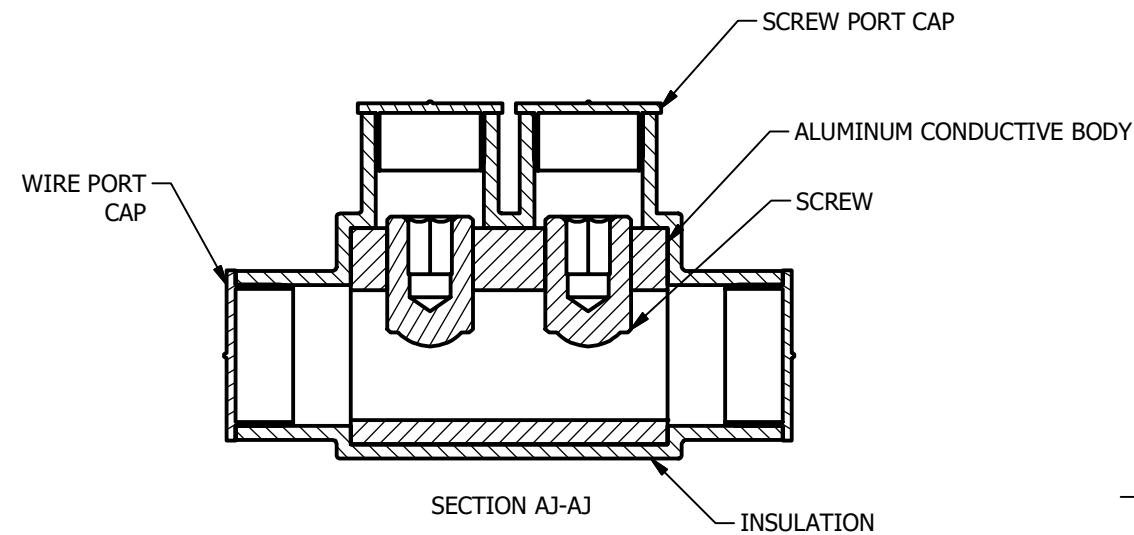


CATALOG NUMBER	ITEM NUMBER	PORTS	LENGTH "L"	WIRE RANGE	HEX KEY	TORQUE IN-LBS
1PLD7502HD	50073384	2	2.63	#2 AWG TO 750 KCMIL CLASS B, C	3/8"	500
1PLD7503HD	50073385	3	4.00			
1PLD7504HD	50073386	4	5.38			
1PLD7505HD	50073387	5	6.75			
1PLD7506HD	50073388	6	8.13			
1PLD7508HD	50073389	8	10.88			
1PLD75010HD	50073390	10	13.63			
1PLD75012HD	50073391	12	16.38			

REV	DATE	DESCRIPTION	ECO	BY	C'H.K.
D	03/12/2019	UPDATED AS PER MARKUP	51029	YR	VS



1PLD 750 3 HD  
 HEAVY DUTY  
 WIRE PORTS  
 WIRE SIZE ACCOMMODATED (AL/CU) STR.  
 BURNDY INSULATED BLOCK  
 DOUBLE SIDE ENTRY



3D VIEW

UL LISTED TO 486A-B, FILE E9498

**NOTES:**

- DIMENSIONS IN BRACKETS [ ] ARE IN MILLIMETERS ROUNDED OFF TO THE NEAREST MILLIMETER, UNLESS OTHERWISE SPECIFIED AND ARE FOR REFERENCE ONLY.
- THIS DRAWING TO BE INTERPRETED PER ASME Y14.5M-2009.
- MATERIAL: BODY - TIN PLATED ALUMINUM  
 SCREW - CLEAR COATED ALUMINUM  
 INSULATION - PLASTISOL  
 CAPS - POLYETHOLENE
- OPERATING TEMPERATURE - -40°C TO 135°C.
- VOLTAGE RATING - 600 V.
- AMPERAGE RATING - 535 AMPS. VALUES BASED ON NFPA 70, TABLE 310.15(B)(16). VALUES MAY VARY BASED UPON AMBIENT CONDITIONS AND CONDUCTOR PROPERTIES.
- BOTH SET SCREWS MUST BE USED PER CONDUCTOR. CONDUCTORS CAN NOT BE INSTALLED FROM OPPOSITE SIDES OF THE SAME PORT USING ONLY ONE 1 SCREW PER CONDUCTOR.

FEATURES	BENEFITS
PLASTISOL COVERED AL 6060-T6 BODY	SAVES TIME, LOWERS INSTALLATION COST, ELIMINATES TAPING
OXIDE-IN HIBITOR IS PREFILLED	INHIBITS MOISTURE AND CONTAMINATES FROM ENTERING THE CONTACT AREA
WIRE AND SCREW PORT COVERS	PROTECTS AGAINST CONTAMINATION AND ACCIDENTAL CONTACT OF ENERGIZED PARTS.

TO ORDER BURNDY® PRODUCTS CALL

UNITED STATES  
 1-800-346-4175 (LONDONDERRY, NH)

CANADA:  
 1-800-361-6975 (QUEBEC)  
 1-800-387-6487 (ALL OTHER PROVINCES)

FOR PRODUCT INFO: <http://www.burndy.com>

FULLY INSULATED DISTRIBUTION BLOCKS-UNITAP™

ITEM NO: SEE TABLE  
 CAT. NO: SEE TABLE

DRAWN BY: VIMAL C 01/20/2017  
 CHECKER: MANIKANDAN 01/20/2017

DSN APRVL: --  
 MFG APRVL: --  
 QA APRVL: --  
 MKT APRVL: --  
 PROD FAM: --

**BURNDY**

PROJECT #: -- SIZE: 50079815  
 DOCUMENT TYPE: SALES REL LEVEL: Released B SHEET 1 OF 1

DRAWING NO: 50079815  
 REV: D