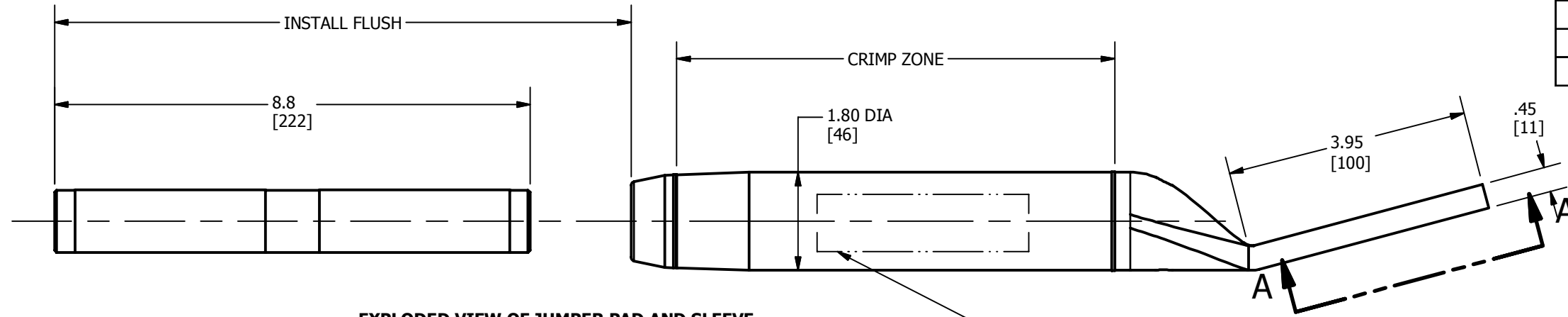


BURNDY® PRODUCTS - HYLUG™ & HARDWARE (ACCC®)

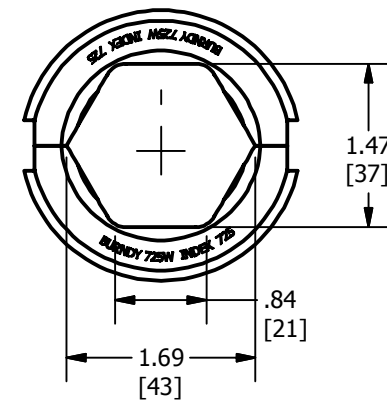
REV	DATE	DESCRIPTION	ECO	BY	C'H'K.
A	4/28/2017	NEW DRAWING CREATED	46580	SM	MB

ITEM NUMBER	CATALOG NUMBER	ACCOMMODATES ACCC® CONDUCTOR		CTC NUMBER	O.D.	I.D.	APPROXIMATE NOMINAL WEIGHT
		CODE WORD	SIZE				
10094205	BYNA325MM2T15HACCC	AMSTERDAM	380mm ²	600-253-4	1.14	.97	2 LBS (1 KG)
10098133	BYNA325MM2T15ACCC						

5 CATALOG NO. TMH24 HARDWARE KIT CONSIST OF	
QTY.	DESCRIPTION
4	BOLT, HEX HEAD 1/2"-13 X 2" LONG
4	HEX NUT, 1/2"-13
4	FLAT WASHER 1/2"
4	RESILIENT WASHER 1/2"

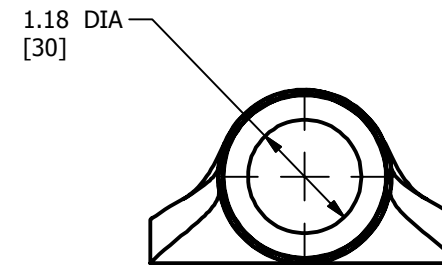


EXPLODED VIEW OF JUMPER PAD AND SLEEVE

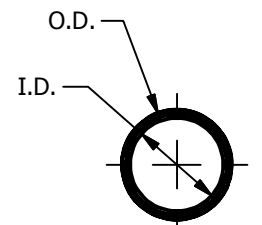


L725W (=AFTER COMPRESSION)

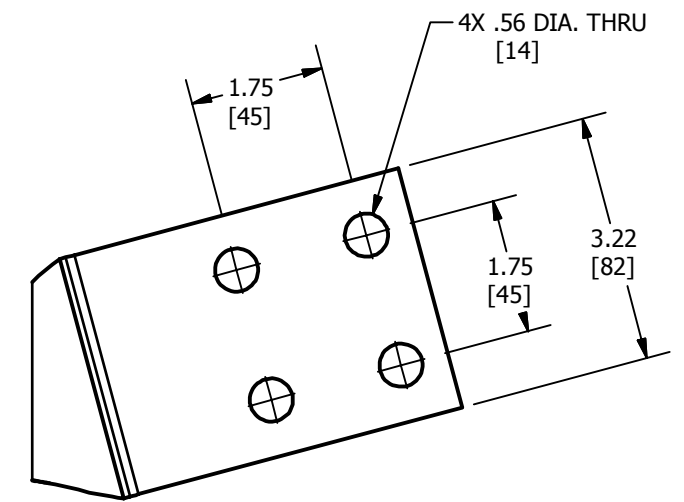
TYPICAL LETTERING
 BURNDY
 BYNA325MM2T15ACCC
 CTC NO. 600-253-4
 LISBON, OSLO, AMSTERDAM ACCC
 METRIC ACSR 265/35
 USE BURNDY DIE 725
 OVERLAP CRIMPS
 CRIMP DIRECTION →



JUMPER PAD END VIEW



INNER SLEEVE END VIEW



VIEW A-A

NOTES:

- MATERIAL:
 - CONNECTOR, ALUMINUM ALLOY, NO-OX-ID COATED
 - ALUMINUM FILLER PLUG
 - TMH24 HARDWARE
 - BOLTS (2024T4), NUTS (6061 T6) AND FLAT WASHERS, ALUMINUM ALLOY
 - RESILIENT WASHERS, GALVANIZED STEEL
- DIMENSIONS IN BRACKETS [] DENOTE METRIC UNITS [SI UNITS] AND ARE ROUNDED TO THE NEAREST WHOLE NUMBER. UNLESS OTHERWISE SPECIFIED THESE UNITS SHALL BE USED FOR REFERENCE ONLY.
- DESIGNED FOR CORONA FREE OPERATION TO 230 KV NO ACCESSORIES REQUIRED.
- CONNECTOR SHALL BE SHIPPED UN-ASSEMBLED.
- RECOMMENDED TIGHTENING TORQUE: 1/2-13 ALUMINUM HARDWARE: 300 LBS-IN [34 NM].
- REFERENCE: 10092621, CONNECTOR INSTALLATION MUST APPLY PENETROX™ HT OXIDE INHIBITING JOINT COMPOUND ON CONDUCTOR AND O.D. OF INNER SLEEVE.
- CATALOG NUMBERS FOR HYLUG™ WITHOUT HARDWARE ARE CATALOG NUMBERS WITHOUT "H".
- INSTALLATION TOOLING (NOT INCLUDED)
 DIE SET L725, TOOL Y60BHU OR Y60BHU-D HYDRAULIC HYPRESS.

TO ORDER BURNDY® PRODUCTS CALL		HYLUG™ TERMINAL PAD ASSEMBLY (ACCC)													
UNITED STATES 1-800-346-4175 (LONDONDERRY, NH)		ITEM NO: SEE TABLE													
CANADA: 1-800-361-6975 (QUEBEC) 1-800-387-6487 (ALL OTHER PROVINCES)		CAT. NO: SEE TABLE													
FOR PRODUCT INFO: http://www.burndy.com		<table border="1"> <tr> <td>DRAWN BY: S.MOORTHY</td> <td>4/28/2017</td> </tr> <tr> <td>CHECKER: B.MANIKANDAN</td> <td>4/28/2017</td> </tr> <tr> <td>DSN APRVL: P.CHAN</td> <td>4/26/2017</td> </tr> <tr> <td>MFG APRVL: --</td> <td></td> </tr> <tr> <td>QA APRVL: T.WATTS</td> <td>4/26/2017</td> </tr> <tr> <td>MKT APRVL: B.CRUTCHER</td> <td>5/1/2017</td> </tr> </table>		DRAWN BY: S.MOORTHY	4/28/2017	CHECKER: B.MANIKANDAN	4/28/2017	DSN APRVL: P.CHAN	4/26/2017	MFG APRVL: --		QA APRVL: T.WATTS	4/26/2017	MKT APRVL: B.CRUTCHER	5/1/2017
DRAWN BY: S.MOORTHY	4/28/2017														
CHECKER: B.MANIKANDAN	4/28/2017														
DSN APRVL: P.CHAN	4/26/2017														
MFG APRVL: --															
QA APRVL: T.WATTS	4/26/2017														
MKT APRVL: B.CRUTCHER	5/1/2017														
<table border="1"> <tr> <td>PROD FAM: TRANSMISSION</td> <td>DRAWING NO</td> <td>REV</td> </tr> <tr> <td>PROJECT #: --</td> <td>50081943</td> <td>A</td> </tr> <tr> <td>DOCUMENT TYPE: SALES</td> <td>SIZE</td> <td></td> </tr> <tr> <td>REL LEVEL: Released</td> <td>B</td> <td></td> </tr> </table>		PROD FAM: TRANSMISSION	DRAWING NO	REV	PROJECT #: --	50081943	A	DOCUMENT TYPE: SALES	SIZE		REL LEVEL: Released	B			
PROD FAM: TRANSMISSION	DRAWING NO	REV													
PROJECT #: --	50081943	A													
DOCUMENT TYPE: SALES	SIZE														
REL LEVEL: Released	B														