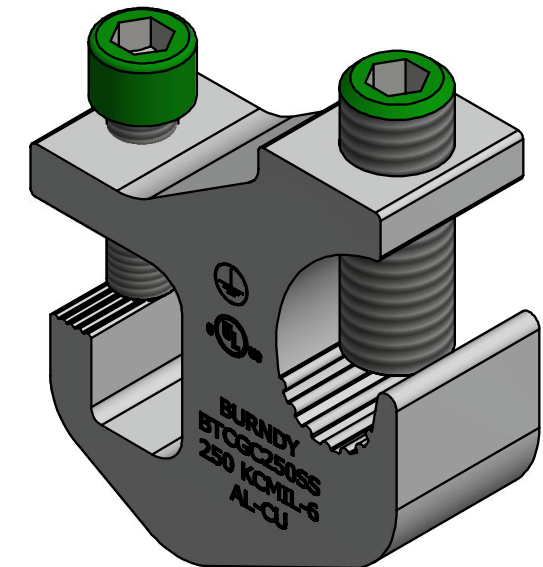
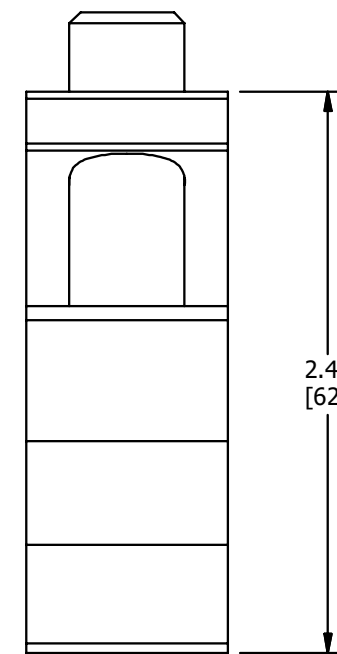
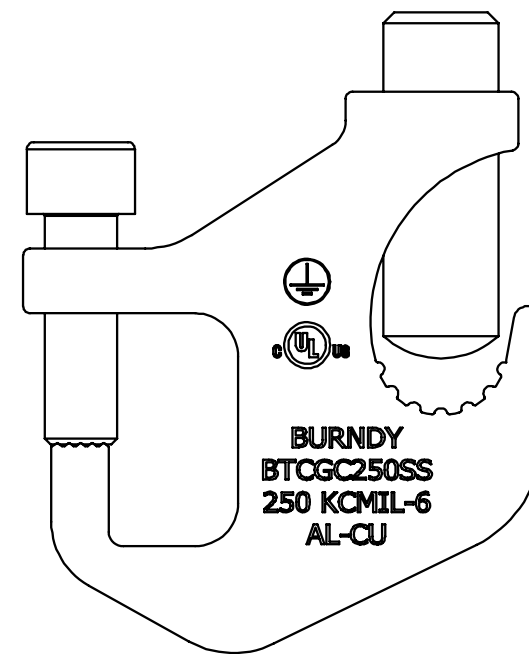
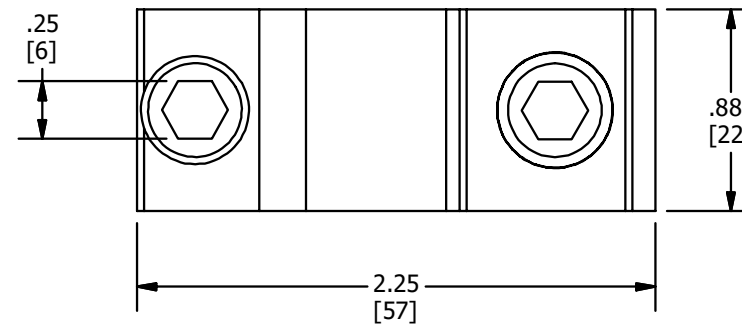


REV	DATE	DESCRIPTION	ECO	BY	C'H'K.
B	18-06-2019	UPDATE FLANGE THICKNESS AND CONDUCTOR SIZE	51652	TM	EM



NOTES:

- MATERIAL: ALUMINUM
FINISH: TIN PLATE
HARDWARE: STAINLESS STEEL W/.250 HEX. (PREINSTALLED ON CLAMP)
- ACCOMODATES GROUND WIRE SIZE #6 TO 250 kcmil.
- TORQUE ON CONDUCTOR: 225 IN LB.
TORQUE ON CABLE TRAY: 150 IN LB.
- BOTH HEADS REQUIRE 1/4" ALLEN KEY.
- cULus LISTED GROUNDING AND BONDING CONNECTOR.
FLANGE THICKNESS: .125 - .50 INCH BARE AL.
CONDUCTOR: 6 AWG - 250 kcmil CU STR/SOL OR AL STR.
- cULus LISTED PHOTOVOLTAIC GROUNDING DEVICE.
FLANGE THICKNESS: 20 GA - .50 INCH GALVANIZED STEEL.
CONDUCTOR: 6 AWG - 250 kcmil CU STR/SOL OR AL STR.
- DIMENSIONS IN BRACKETS [] ARE IN MILLIMETERS ROUNDED OFF TO THE NEAREST MILLIMETER, UNLESS OTHERWISE SPECIFIED AND ARE FOR REFERENCE ONLY.

TO ORDER BURNDY® PRODUCTS CALL		TRAY CLAMP	
UNITED STATES 1-800-346-4175 (LONDONDERRY, NH)		ITEM NO: 50087186	
CANADA: 1-800-361-6975 (QUEBEC) 1-800-387-6487 (ALL OTHER PROVINCES)		CAT. NO: BTCGC250SS	
FOR PRODUCT INFO: http://www.burndy.com		DRAWN BY: T.SATHISH 24-10-2017	
		CHECKER: E.MARTIN 25-06-2019	
		DSN APRVL: R.R.RULAND 02-07-2019	
		PUR APRVL: --	
		QA APRVL: B.ELLIOTT 26-06-2019	
		MKT APRVL: --	
PROD FAM: GROUNDING	SIZE: B	DRAWING NO: 50087187	REV: B
PROJECT #: NPD02679	DOCUMENT TYPE: SALES	REL LEVEL: Released	SHEET 1 OF 1