

CATALOG NO.	COPPER CONDUCTOR SIZE, AWG	STUD SIZE	FIG. NO.	INSTALLATION TOOLING	WIRE STRIP LENGTH
				HAND TOOLS 1 CRIMP	
YAV10TC12	14-10 STR 12-10 SOL 14-10 FLEX	1/2"	1	Y10D, Y1022, Y8MRB1, MR89Q MRE1022NV, MR20, Y122CMR	7/16"
YAV10TC1245			2		
YAV10TC1290			3		

REV	DATE	DESCRIPTION	ECO	BY	C'H'K.
A	11/14/2017	NEW DWG CREATED	48033	BK	MB

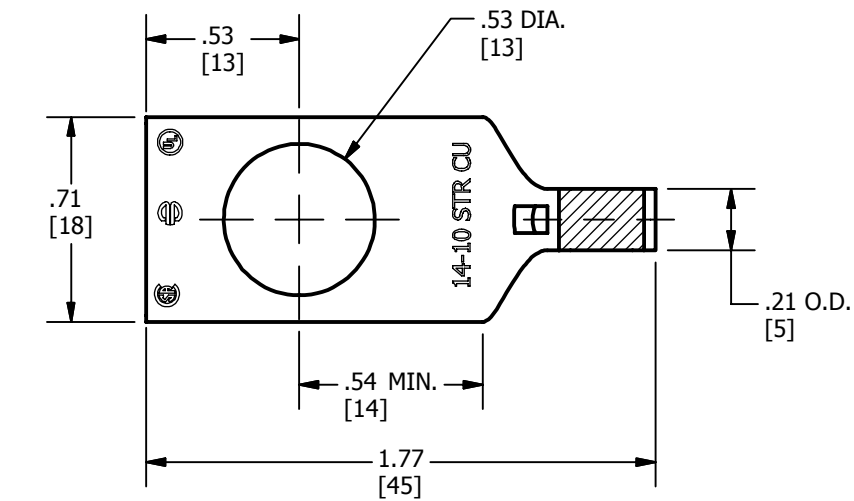


FIG. - 1

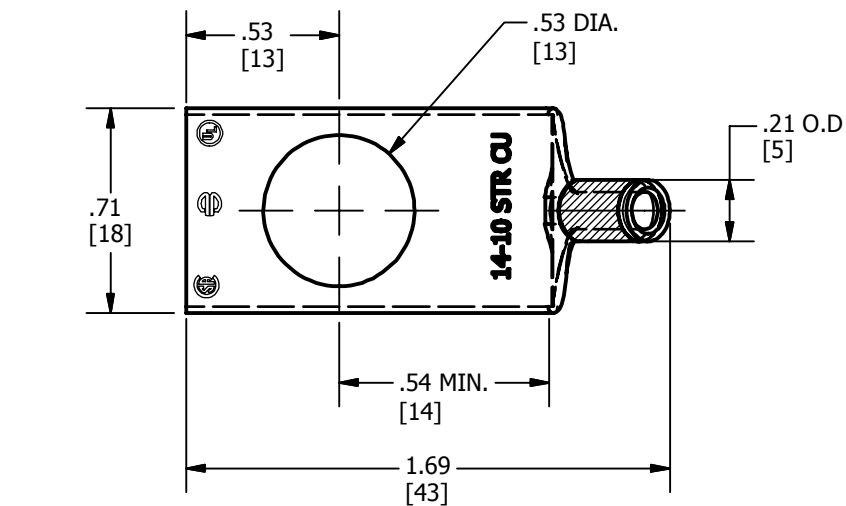


FIG. - 2

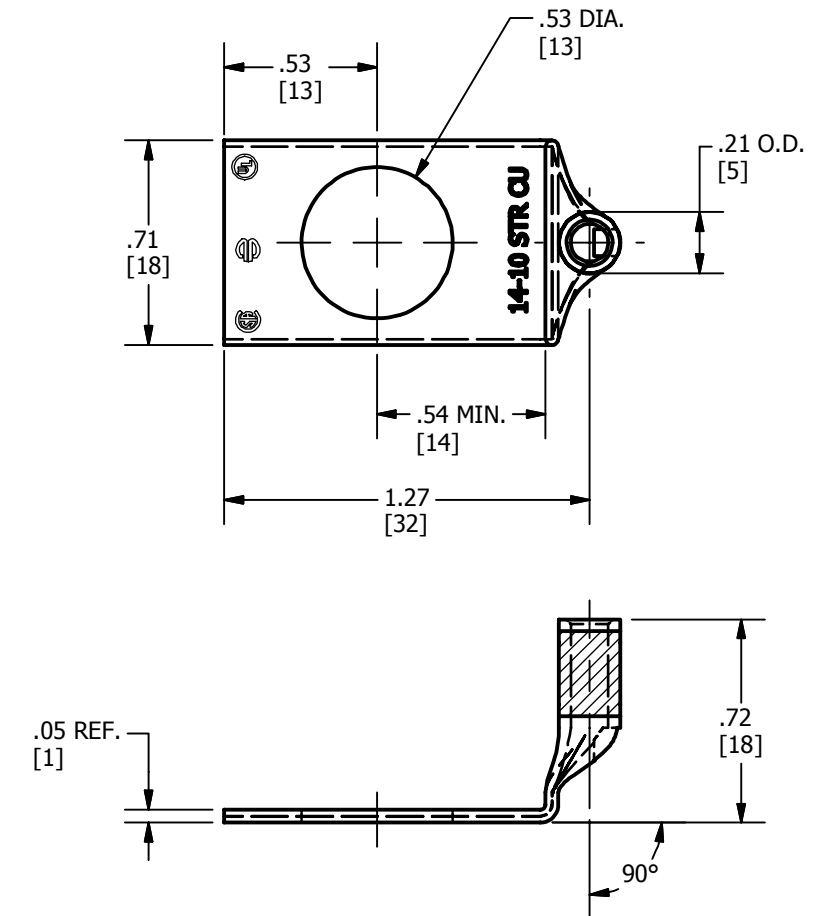


FIG. - 3

NOTES:

1. MATERIAL: COPPER TUBING
2. FINISH: TIN PLATED
3. DIMENSIONS IN BRACKETS [] ARE IN MILLIMETERS ROUNDED OFF TO THE NEAREST MILLIMETER, UNLESS OTHERWISE SPECIFIED AND ARE FOR REFERENCE ONLY.
4. UL LISTED AND CSA CERTIFIED WIRE CONNECTOR.

TO ORDER BURNDY® PRODUCTS CALL		HYLUG™	
UNITED STATES 1-800-346-4175 (LONDONDERRY, NH)		ITEM NO: N/A	
CANADA: 1-800-361-6975 (QUEBEC) 1-800-387-6487 (ALL OTHER PROVINCES)		CAT. NO: SEE TABLE	
FOR PRODUCT INFO: http://www.burndy.com		DRAWN BY: K. BALAJI 11/14/2017	
		CHECKER: B. MANIKANDAN 11/15/2017	
		DSN APRVL: R. ROMAN 11/14/2017	
		MFG APRVL: B. MICHAUD 11/14/2017	
		QA APRVL: P. BRADLEY 11/14/2017	
		MKT APRVL: --	
		PROD FAM: --	
		DRAWING NO	
		50087543	
		REV	
		A	
		SHEET 1 OF 1	