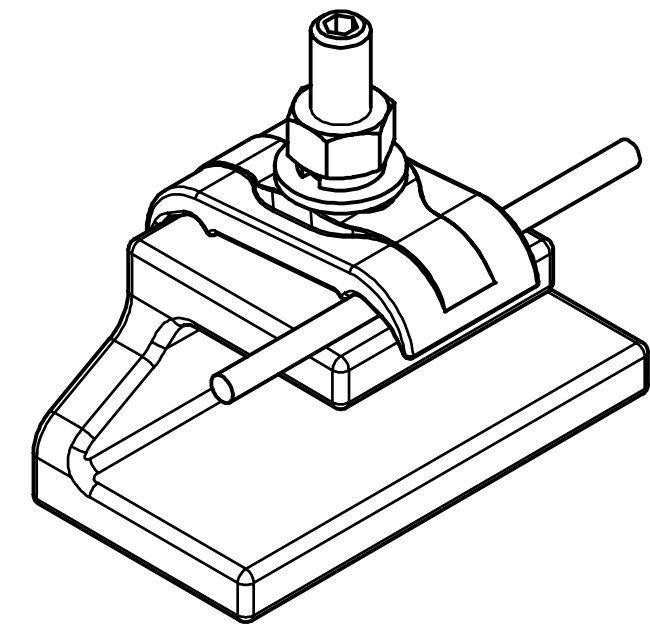
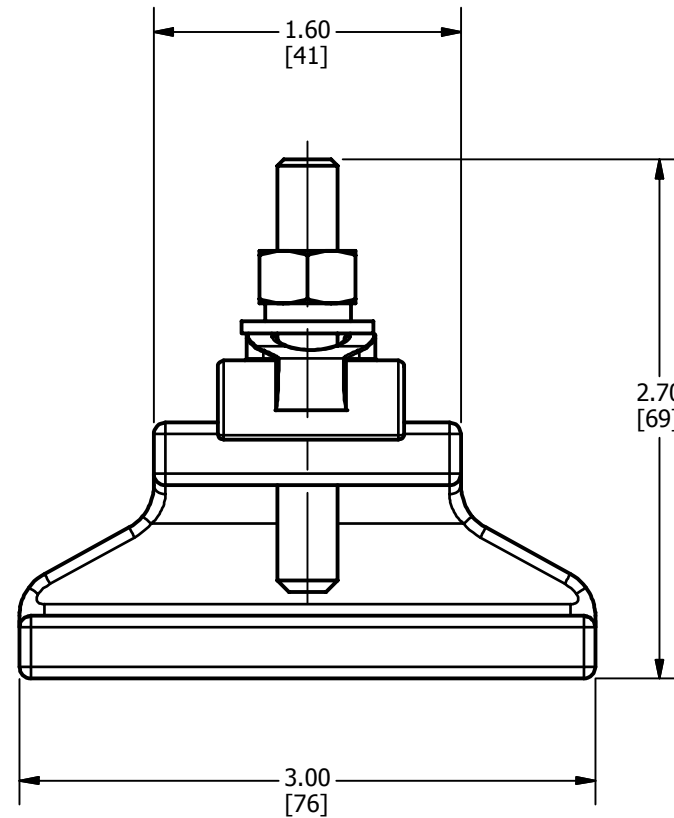
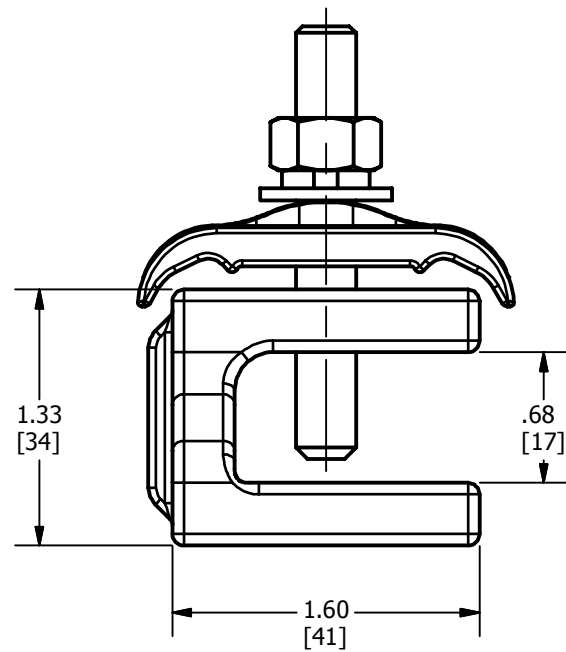
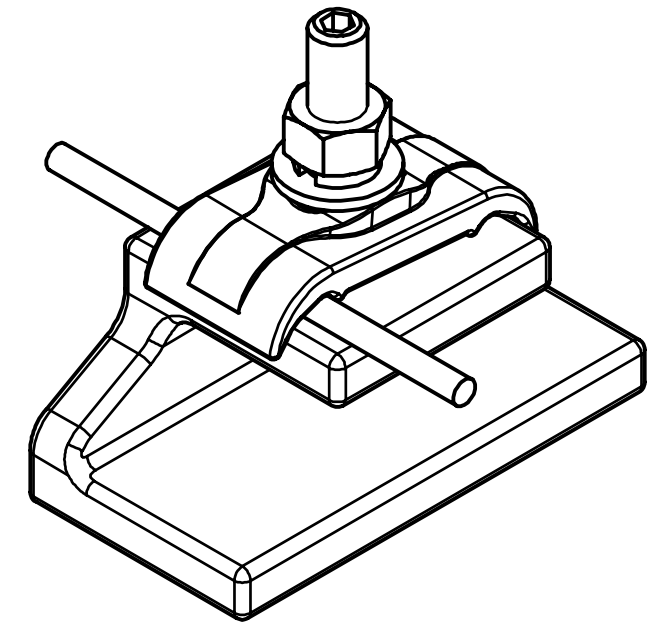


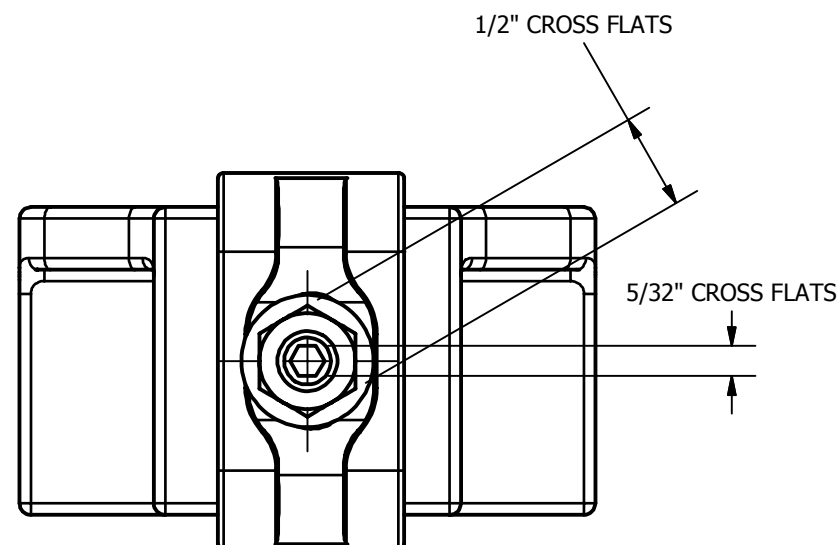
REV	DATE	DESCRIPTION	ECO	BY	C'H'K.
A	02/06/2018	NEW DRAWING CREATED	48495	PB	RG



PARALLEL CONFIGURATION



PERPENDICULAR CONFIGURATION



**NOTES:**

1. DIMENSIONS IN BRACKETS [ ] ARE IN MILLIMETERS ROUNDED OFF TO THE NEAREST MILLIMETER, UNLESS OTHERWISE SPECIFIED AND ARE FOR REFERENCE ONLY.
2. MATERIAL: CLAMP BODY: CAST COPPER ALLOY  
HARDWARE: STAINLESS STEEL
3. cULus LISTED TO GROUNDING AND BONDING EQUIPMENT STANDARD.
4. ACCOMODATED 1 TO 2 WIRES, 2/0 TO 6 AWG. ACCOMODATES STEEL 1/8" TO 5/8" THICK.
5. WIRES CAN BE INSTALLED IN EITHER A PARALLEL OR PERPENDICULAR ARRANGEMENT, AS SHOWN IN INSTALLED VIEW.
6. PRODUCT IS SUITABLE FOR DIRECT BURIAL APPLICATIONS
7. ADD SUFFIX "TN" FOR TIN PLATED FINISH ON CLAMP BODY AND CAP.

TO ORDER BURNDY® PRODUCTS CALL		GROUND CLAMP TO STEEL	
UNITED STATES 1-800-346-4175 (LONDONDERRY, NH)		ITEM NO: 50087052 & 50087053	
CANADA: 1-800-361-6975 (QUEBEC) 1-800-387-6487 (ALL OTHER PROVINCES)		CAT. NO: GCS26 & GCS26TN	
FOR PRODUCT INFO: <a href="http://www.burndy.com">http://www.burndy.com</a>		DRAWN BY: B.PARTHIBAN 2/6/2018	
		CHECKER: L.TROMBLEY 2/20/2018	
		DSN APRVL: L.TROMBLEY 2/20/2018	
		MFG APRVL: A.SALAZAR 2/20/2018	
		QA APRVL: E.VARGAS 2/13/2018	
		MKT APRVL: --	
		PROD FAM: --	
		DRAWING NO	
		50089428	
		REV	
		A	
		SHEET 1 OF 1	