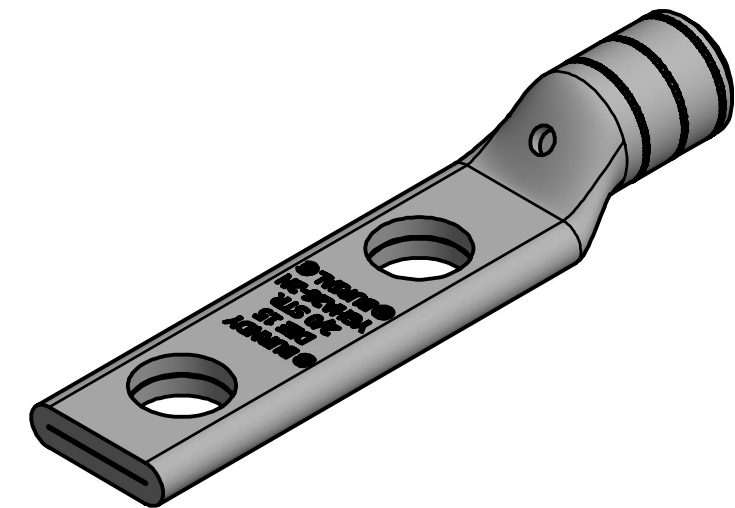
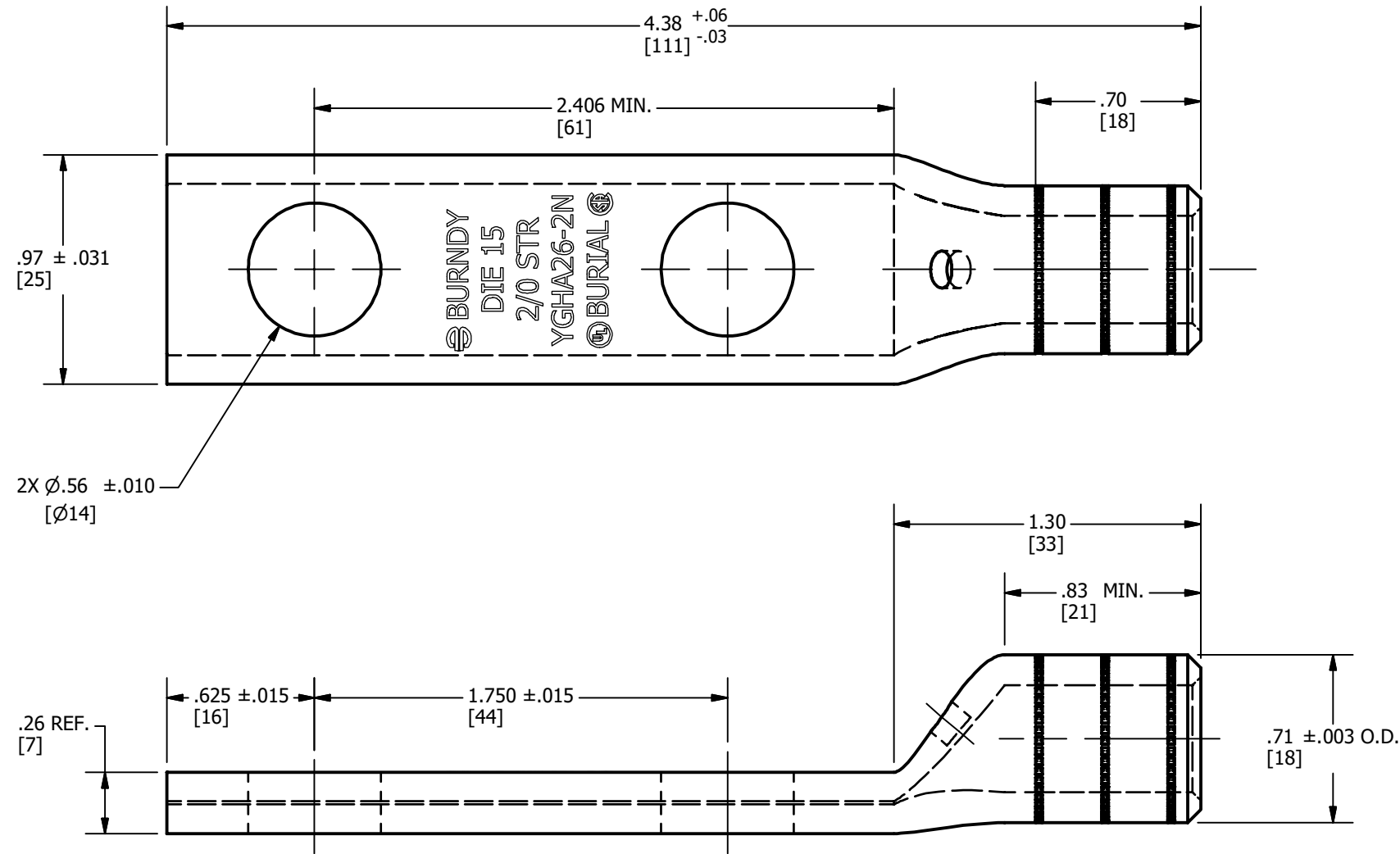


Copper Conductor Size	Installation Tools, Die Set Catalog Number and (# of Crimps)	DIE INDEX NO.	NO.OF KNURLS	INSP. PIN DIA.
2/0 STR (.418)	HYPRESS™ Y35/Y39/Y45 <sup>2</sup> /Y46 <sup>3</sup> /Y750/PAT750 U28RT (1)	15	2	0.438

REV	DATE	DESCRIPTION	ECO	BY	C'H'K.
A	19/02/2018	NEW SALES DRAWING CREATED	48880	PP	VS



**NOTES:**

- MATERIAL: CAST COPPER ALLOY.  
PLATING: ELECTRO TIN PLATING.
- WHERE A "U" OR "PU" DIE IS RECOMMENDED WITH THE Y45 HYPRESS™, A PT6515 ADAPTER MUST BE USED.
- WHERE A "U" OR "PU" DIE IS RECOMMENDED WITH THE Y46 HYPRESS™, A PUADP-1 ADAPTER MUST BE USED.
- DIMENSIONS IN [ ] BRACKETS ARE IN MILLIMETERS, ROUNDED OFF TO THE NEAREST MILLIMETER UNLESS OTHERWISE NOTED. METRIC DIMENSIONS ARE FOR REFERENCE ONLY.
- APPROXIMATE WEIGHT : 0.294 LBS.

TO ORDER BURNDY® PRODUCTS CALL		HYLUG™	
UNITED STATES 1-800-346-4175 (LONDONDERRY, NH)		ITEM NO: 10038154	
CANADA: 1-800-361-6975 (QUEBEC) 1-800-387-6487 (ALL OTHER PROVINCES)		CAT. NO: YGHA262NTNPP	
FOR PRODUCT INFO: <a href="http://www.burndy.com">http://www.burndy.com</a>		DRAWN BY: PRASANTH.P 02/19/2018	
		CHECKER: VENKATESAN.S 02/19/2018	
		DSN APRVL: J.HOGAN 04/23/2018	
		MFG APRVL: --	
		QA APRVL: T.WATTS 04/09/2018	
		MKT APRVL: --	
		PROJ #: --	
		SIZE: B	
		DRAWING NO: 50089473	
		REV: A	
		SHEET 1 OF 1	