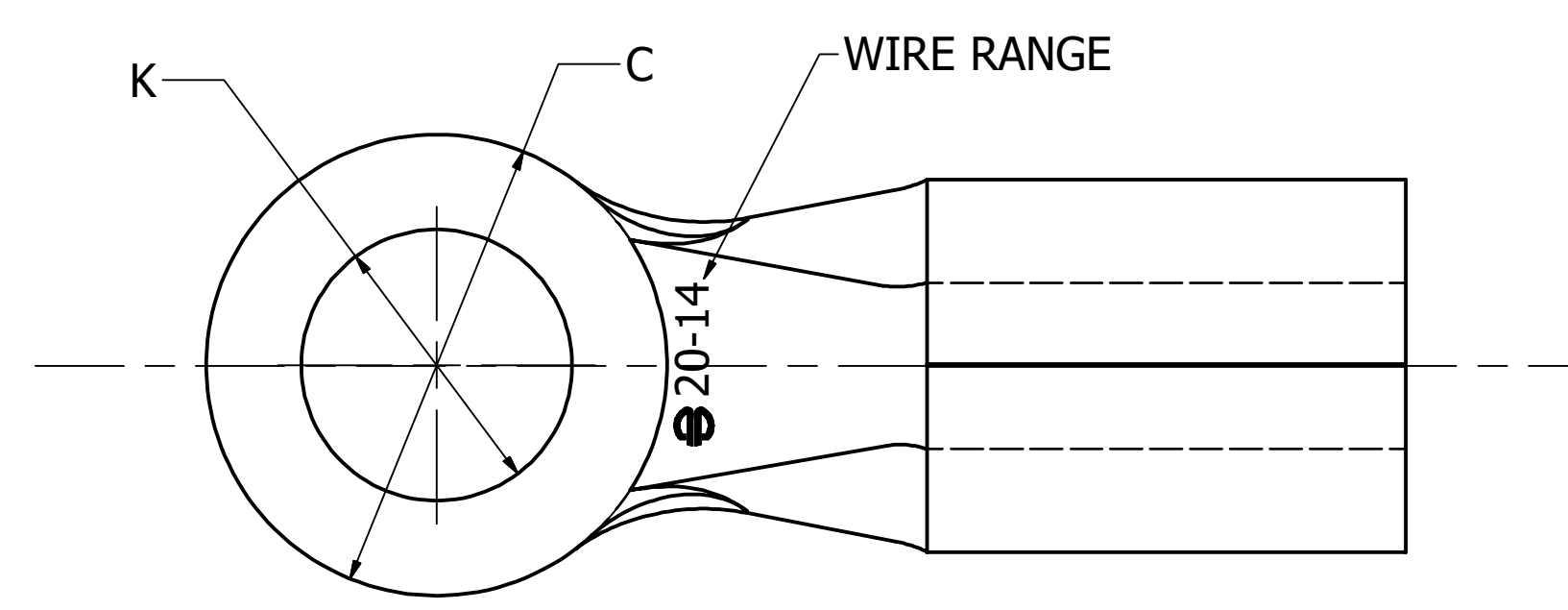
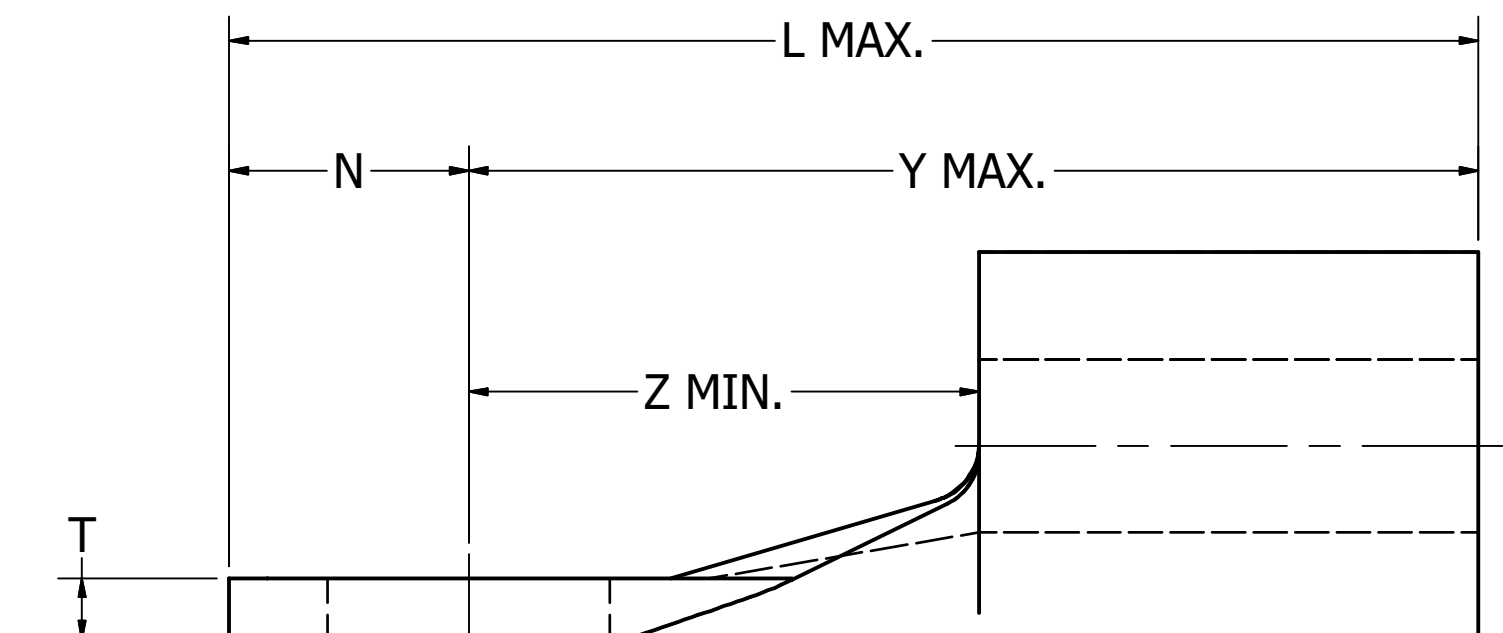
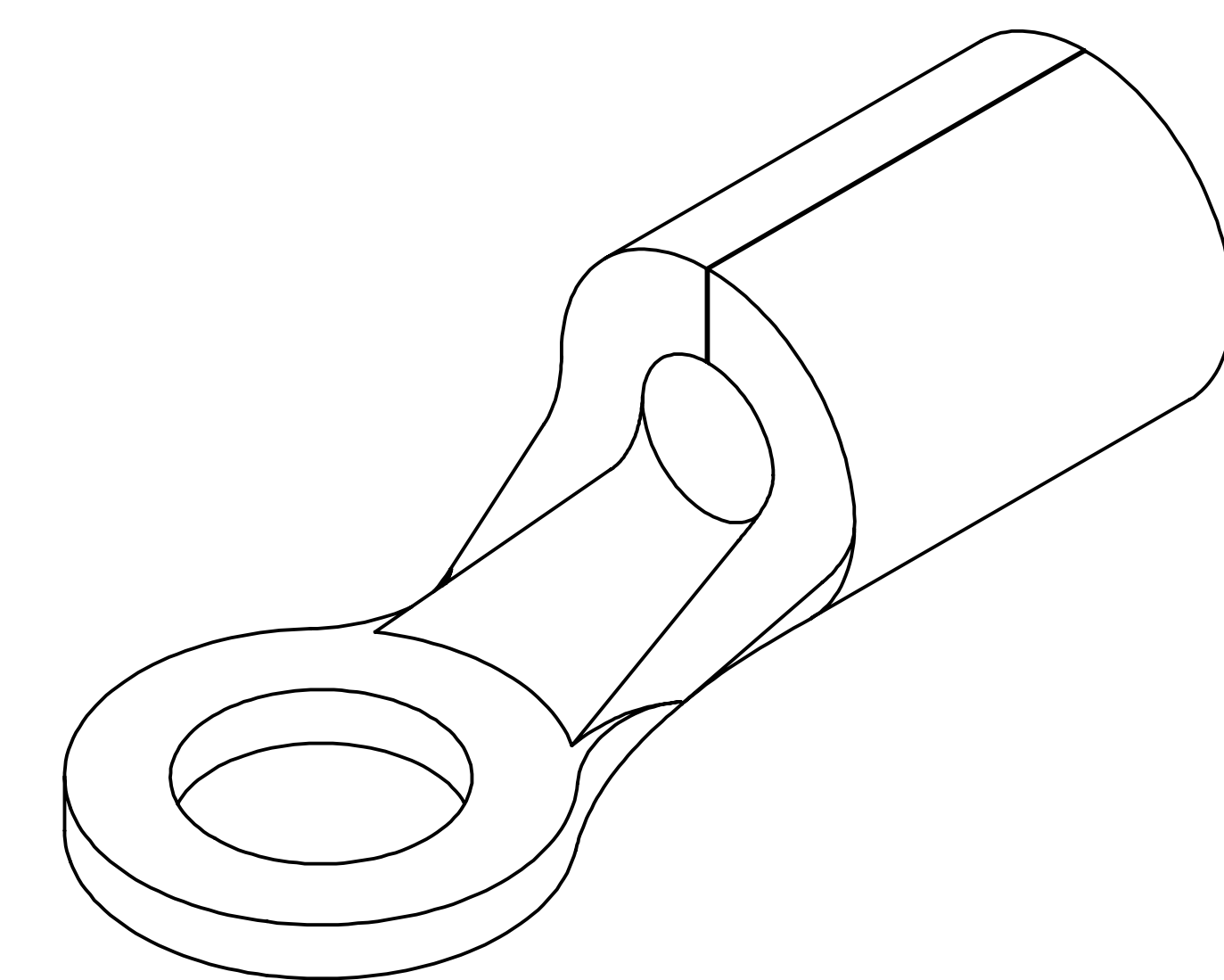


REV	DATE	DESCRIPTION	ECO	BY	C'H'K.
C	05/20/2020	UPDATED PER MARKUP	53064	SS	YR

WIRE SIZE (AWG)	STUD SIZE	CATALOG NUMBER	BULK CATALOG NUMBER	TAPE MOUNTED CATALOG NUMBER 2000/REEL	C		K		L MAX.	N		T ± .01 [± .25]	Y MAX.	Z MIN.	WIRE STRIP LENGTH ± .03 [± .8]	INSTALLATION TOOLING (ONE CRIMP)	
					MAX.	MIN.	MAX.	MIN.		MAX.	MIN.						
22-18 Str. and Sol.	4	T184	YAD184	YAD184M	.25 [6.5]	.25 [6.2]	.12 [3.0]	.11 [2.8]	.65 [16.5]	.13 [3.2]	.12 [3.1]	.03 [8]	.53 [13.4]	.24 [6.1]	9/32" [7.1]	Y6NCB [J1022NC5], Y6NCP1[J1022NC5], Y10D, Y1022, MR8G98, MR20, Y8MRB1, MRE1022B	
	6	T186	YAD186	YAD186M			.15 [3.8]	.14 [3.6]					.61 [15.6]	.33 [8.4]			
	8	T188	YAD188	YAD188M			.18 [4.5]	.16 [4.1]					.77 [19.6]	.16 [4.0]			.15 [3.9]
	10	T1810	YAD1810	YAD1810M			.23 [5.8]	.19 [4.8]					.23 [5.8]	.16 [4.0]			.15 [3.9]
	1/4	T1814	YAD1814	YAD1814M			.28 [7.1]	.26 [6.6]	.96 [24.4]	.23 [5.8]	.22 [5.7]			.73 [18.5]			.45 [11.3]
	5/16	T18516	YAD18516	-			.34 [8.6]	.32 [8.1]						.78 [19.7]			.40 [10.2]
	3/8	T1838	YAD1838	-			.40 [10.2]	.38 [9.7]	1.04 [26.4]	.27 [6.8]	.26 [6.7]			.78 [19.7]			.40 [10.2]
1/2	T1812	YAD1812	-			.54 [13.7]	.52 [13.2]	1.19 [30.2]	.36 [9.1]	.36 [9.1]		.83 [21.1]	.55 [14.0]				
20-14 Str. and Sol.	4	T144	YAD144	-	.25 [6.5]	.25 [6.2]	.12 [3.0]	.11 [2.8]	.67 [17.0]	.13 [3.2]	.12 [3.1]	.03 [8]	.54 [13.8]	.26 [6.6]	9/32" [7.1]	Y6NCB [J1022NC5], Y6NCP1[J1022NC5], Y10D, Y1022, MR8G98, MR20, Y8MRB1, MRE1022B	
	6	T146	YAD146	YAD146M			.15 [3.8]	.14 [3.6]					.61 [15.6]	.33 [8.4]			
	8	T148	YAD148	YAD148M			.18 [4.5]	.16 [4.1]	.77 [19.5]	.16 [4.0]	.15 [3.9]			.61 [15.6]			.33 [8.4]
	10	T1410	YAD1410	YAD1410M			.23 [5.8]	.19 [4.8]					.77 [19.5]	.16 [4.0]			.15 [3.9]
	1/4	T1414	YAD1414	YAD1414M			.28 [7.1]	.26 [6.6]	.95 [24.2]	.23 [5.8]	.22 [5.7]			.73 [18.5]			.44 [11.3]
	5/16	T14516	YAD14516	-			.34 [8.6]	.32 [8.1]						.78 [19.7]			.49 [12.5]
	3/8	T1438	YAD1438	YAD1438M			.40 [10.2]	.38 [9.7]	1.04 [26.4]	.27 [6.8]	.26 [6.6]			.78 [19.7]			.49 [12.5]
1/2	T1412	YAD1412	-			.54 [13.7]	.52 [13.2]	1.19 [30.2]	.36 [9.1]	.36 [9.1]		.83 [21.1]	.55 [14.0]				
12-10 Str. and Sol.	6	T106	YAD106	-	.38 [9.7]	.37 [9.4]	.15 [3.8]	.14 [3.6]	.83 [21.1]	.19 [4.8]	.18 [4.7]	.04 [1.0]	.64 [16.3]	.29 [7.4]	11/32" [8.7]	No. 12-10 Str/Sol: Y6NCB [J1022NC5], Y122CMR  No. 12 Sol/Str: MR8G98, Y10D, Y8MRB1  No. 10 Str: Y1022, Y8MRB1, MR20, MR8G98	
	8	T108	YAD108	YAD108M			.18 [4.5]	.16 [4.1]									
	10	T1010	YAD1010	-			.23 [5.8]	.19 [4.8]									
	1/4	T1014	YAD1014	YAD1014M	.47 [11.9]	.45 [11.5]	.28 [7.1]	.26 [6.6]	.96 [24.4]	.23 [5.9]	.23 [5.8]						
	5/16	T10516	YAD10516	YAD10516M	.54 [13.7]	.53 [13.4]	.34 [8.6]	.32 [8.1]	1.02 [26.0]	.27 [6.8]	.26 [6.7]						
	3/8	T1038	YAD1038	YAD1038M	.58 [14.9]	.57 [14.5]	.40 [10.2]	.38 [9.7]	1.07 [27.2]	.29 [7.4]	.29 [7.3]						
1/2	T1012*	YAD1012	-	.72 [18.3]	.70 [17.9]	.54 [13.7]	.51 [13.0]	1.22 [31.0]	-	-		-	.62 [15.6]				



- NOTES:
1. TERMINAL: TIN PLATED COPPER.
  2. FOR NICKEL PLATED TERMINAL ADD NK SUFFIX TO THE END OF CATALOG NUMBER.
  3. DIMENSIONS IN BRACKETS [ ] ARE IN MILLIMETERS AND ARE FOR REFERENCE ONLY.
  4. DIE SETS ARE LISTED IN BRACKETS [ ] AFTER THEIR RESPECTIVE TOOLS.
  5. FOR CONNECTORS MOUNTED ON MYLAR USE INSTALLATION TOOL OEM175TFM:  
USE DIE SET TFM2214B FOR WIRE SIZE 22-14.  
USE DIE SET TFM1210B FOR WIRE SIZE 12-10.
  6. REFERENCE DRAWING 50105266 FOR MORE INFORMATION ABOUT TAPE MOUNTED TERMINALS.
  7. UL LISTED & CSA CERTIFIED WIRE CONNECTORS PER UL486A/B (FILE E9498) & CSA C22.2 NO.65 REQUIREMENTS (FILE 42862) .
  8. DISCONTINUED TOOLS: INSY10D, Y14MV, Y8MRB, Y6NCP, Y10MRS, Y10MRPA  
CONTACT TECH SERVICE FOR INFORMATION ABOUT APPROVED APPLICATIONS (1-800-451-4956).
  9. ITEMS WITH CATALOG NUMBERS FOLLOWED BY ASTERISKS (\*) ARE NOT UL LISTED OR CSA CERTIFIED.

TO ORDER BURNDY® PRODUCTS CALL		HYLUG	
UNITED STATES 1-800-346-4175 (LONDONDERRY, NH)		ITEM NO: SEE TABLE	
CANADA: 1-800-361-6975 (QUEBEC) 1-800-387-6487 (ALL OTHER PROVINCES)		CAT. NO: TYPE T & YAD	
FOR PRODUCT INFO: <a href="http://www.burndy.com">http://www.burndy.com</a>		DRAWN BY: P.PRASANTH 9/25/2018 CHECKER: V.SAKTHIVEL 9/25/2018 DSN APRVL: K.CASTONGUAY 10/15/2018 MFG APRVL: -- QA APRVL: B.POST 11/6/2018 MKT APRVL: M.BAILLY 10/1/2018 PROD FAM: --	
		PROJECT #: -- DOCUMENT TYPE: SALES REL LEVEL: Released	