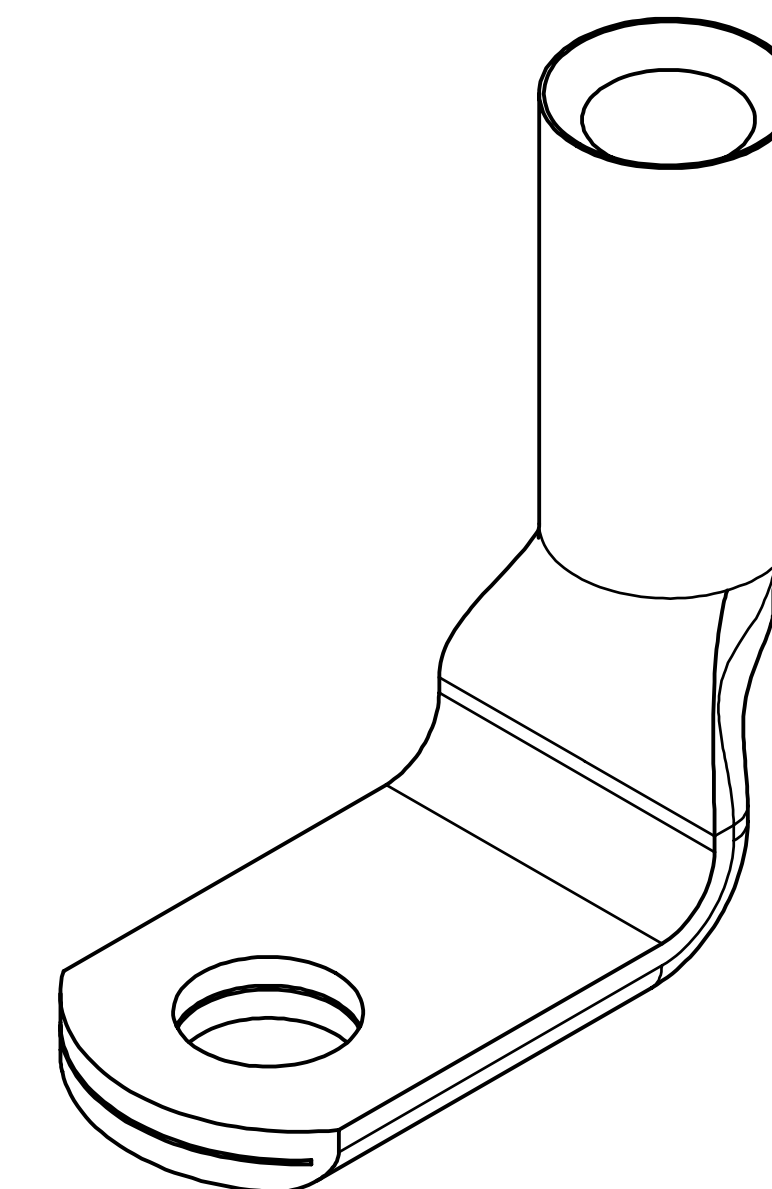
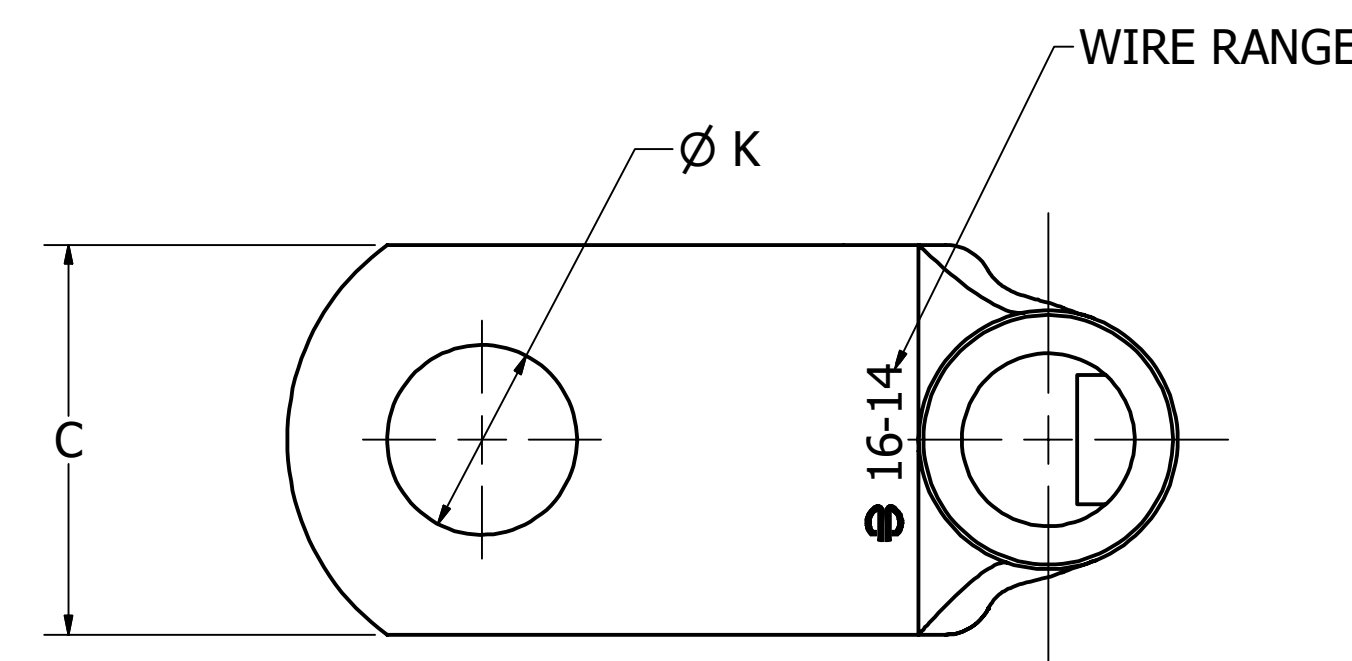
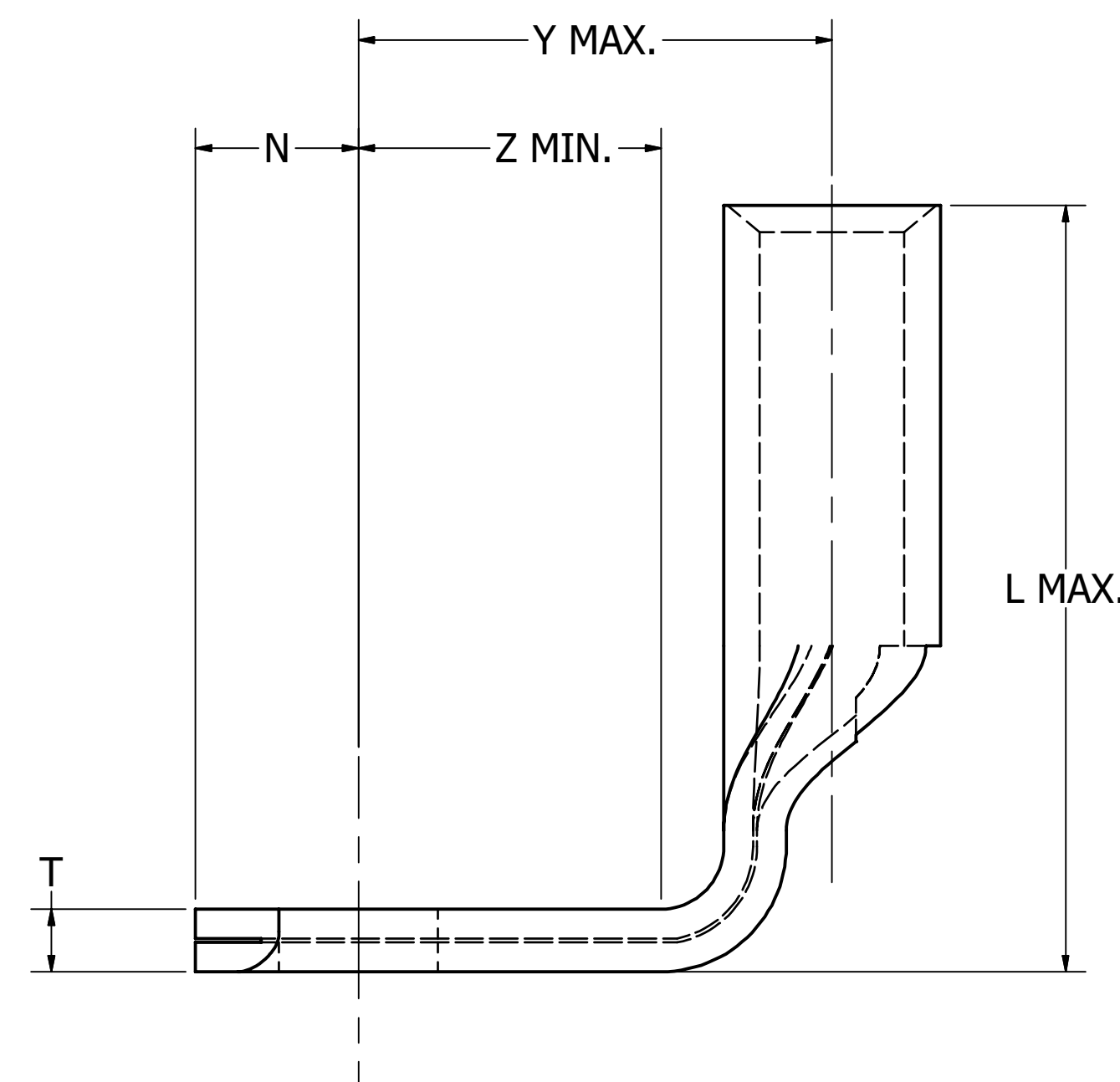


REV	DATE	DESCRIPTION	ECO	BY	C'H'K.
E	05/19/2020	UPDATED AS PER MARKUP	53596	SS	YR

WIRE SIZE (AWG), AN Aircraft	STUD SIZE	CATALOG NUMBER	C		K		L MAX.	N		T ±.01 [±.25]	Y MAX.	Z MIN.	WIRE STRIP LENGTH ±.03 [±.8]	DIE INDEX					
			MAX.	MIN.	MAX.	MIN.		MAX.	MIN.										
8 Str.	8	YAV8CRS14	.44 [11.2]	.38 [9.7]	.18 [4.6]	.16 [4.1]	1.02 [25.8]	.22 [5.6]	.18 [4.6]	.08 [2.0]	.62 [15.7]	.25 [6.4]	7/16" [11.1]	38					
	10	YAV8CRS			.23 [5.8]	.19 [4.8]		.27 [6.9]	.23 [5.8]		.65 [16.5]	.28 [7.1]							
	1/4	YAV8CRS1			.28 [7.1]	.26 [6.6]		.30 [7.6]	.26 [6.6]		.68 [17.3]	.31 [7.9]							
	5/16	YAV8CRS2			.59 [15.0]	.54 [13.7]		.34 [8.6]	.32 [8.1]		.06 [1.5]	.71 [18.1]			.34 [8.7]				
	3/8	YAV8CRS3			.59 [15.0]	.54 [13.7]		.41 [10.4]	.38 [9.7]		.33 [8.4]	.29 [7.4]			.40 [10.2]	.36 [9.1]	.04 [1.0]	.84 [21.3]	.47 [11.9]
	1/2	YAV8CRS4			.78 [19.8]	.72 [18.3]		.54 [13.7]	.51 [13.0]		.40 [10.2]	.36 [9.1]			.04 [1.0]	.84 [21.3]	.47 [11.9]		
6 Str.	10	YAV6CRS1	.53 [13.5]	.47 [11.9]	.23 [5.8]	.19 [4.8]	1.04 [26.4]	.27 [6.9]	.23 [5.8]	.07 [1.8]	.67 [17.0]	.28 [7.1]	1/2" [12.7]	39					
	1/4	YAV6CRS			.28 [7.1]	.26 [6.6]		.33 [8.4]	.29 [7.4]		.06 [1.5]	.73 [18.6]			.34 [8.7]				
	5/16	YAV6CRS4			.65 [16.5]	.59 [15.0]		.34 [8.6]	.32 [8.1]		.40 [10.2]	.36 [9.1]			.05 [1.3]	.86 [21.8]	.47 [11.9]		
	3/8	YAV6CRS2			.62 [15.7]	.56 [14.2]		.41 [10.4]	.38 [9.7]		.46 [11.7]	.42 [10.7]			.08 [2.0]	.90 [22.9]	.47 [11.9]		
	1/2	YAV6CRS10			.78 [19.8]	.72 [18.3]		.54 [13.7]	.51 [13.0]		.35 [8.9]	.31 [7.9]			.10 [2.5]	.82 [20.8]	.34 [8.6]		
4 Str.	10	YAV4CRS3	.65 [16.5]	.59 [15.0]	.23 [5.8]	.19 [4.8]	1.06 [26.9]	.27 [6.9]	.23 [5.8]	.09 [2.3]	.70 [17.7]	.28 [7.1]	5/8" [15.9]	41					
	1/4	YAV4CRS			.28 [7.1]	.26 [6.6]		.33 [8.4]	.29 [7.4]		.08 [2.0]	.77 [19.6]			.34 [8.7]				
	5/16	YAV4CRS4			.34 [8.6]	.32 [8.1]		.41 [10.4]	.38 [9.7]		.35 [8.9]	.31 [7.9]			.10 [2.5]	.82 [20.9]	.34 [8.7]		
	3/8	YAV4CRS2			.41 [10.4]	.38 [9.7]		.46 [11.7]	.42 [10.7]		.08 [2.0]	.90 [22.9]			.47 [11.9]				
	1/2	YAV4CRS5			.84 [21.3]	.78 [19.8]		.54 [13.7]	.51 [13.0]		.40 [10.2]	.36 [9.1]			.09 [2.3]	.95 [24.1]	.47 [11.9]		
2 Str.	10	YAV2CRS3	.71 [18.0]	.65 [16.5]	.23 [5.8]	.19 [4.8]	1.29 [32.8]	.35 [8.9]	.31 [7.9]	.10 [2.5]	.82 [20.8]	.34 [8.6]	5/8" [15.9]	41					
	1/4	YAV2CRS1			.28 [7.1]	.26 [6.6]		.35 [8.9]	.31 [7.9]		.10 [2.5]	.82 [20.9]			.34 [8.7]				
	5/16	YAV2CRS2			.34 [8.6]	.32 [8.1]		.41 [10.4]	.38 [9.7]		.40 [10.2]	.36 [9.1]			.09 [2.3]	.95 [24.1]	.47 [11.9]		
	3/8	YAV2CRS			.41 [10.4]	.38 [9.7]		.46 [11.8]	.45 [11.4]										
	7/16	YAV2CRS4			.46 [11.8]	.45 [11.4]													
	1/2	YAV2CRS11			.80 [20.3]	.74 [18.8]		.54 [13.7]	.51 [13.0]										



NOTES:

1. TERMINAL: TIN PLATED COPPER
2. DIMENSIONS IN BRACKETS [] ARE IN MILLIMETERS AND ARE FOR REFERENCE ONLY.
3. UL LISTED WIRE CONNECTORS PER UL486A/B (FILE E9498) REQUIREMENTS
4. MEETS REQUIREMENTS OF SAE-AS7928 (MAIN OFFICE CAGE CODE NUMBER: 1NJK8)
5. FOR NICKEL PLATED HYLUG™ ADD 'NK' SUFFIX TO CATALOG NUMBERS.

TO ORDER BURNDY® PRODUCTS CALL

UNITED STATES
1-800-346-4175 (LONDONDERRY, NH)

CANADA:
1-800-361-6975 (QUEBEC)
1-800-387-6487 (ALL OTHER PROVINCES)

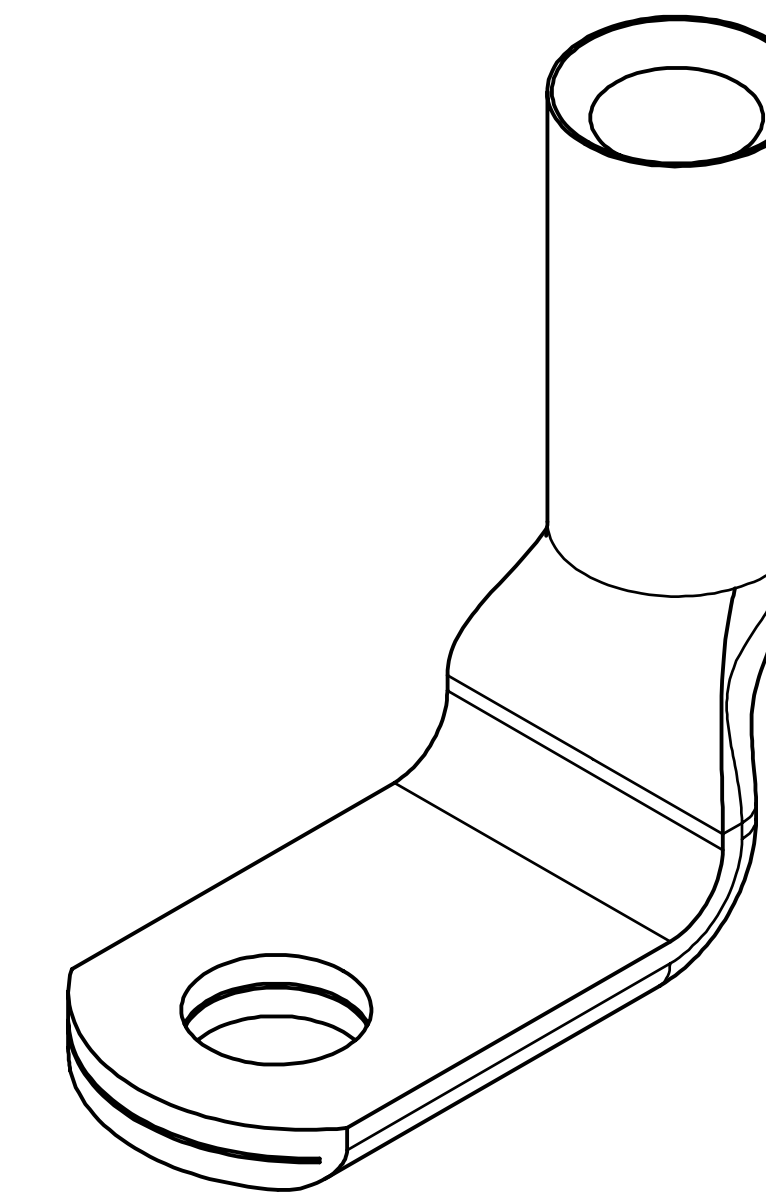
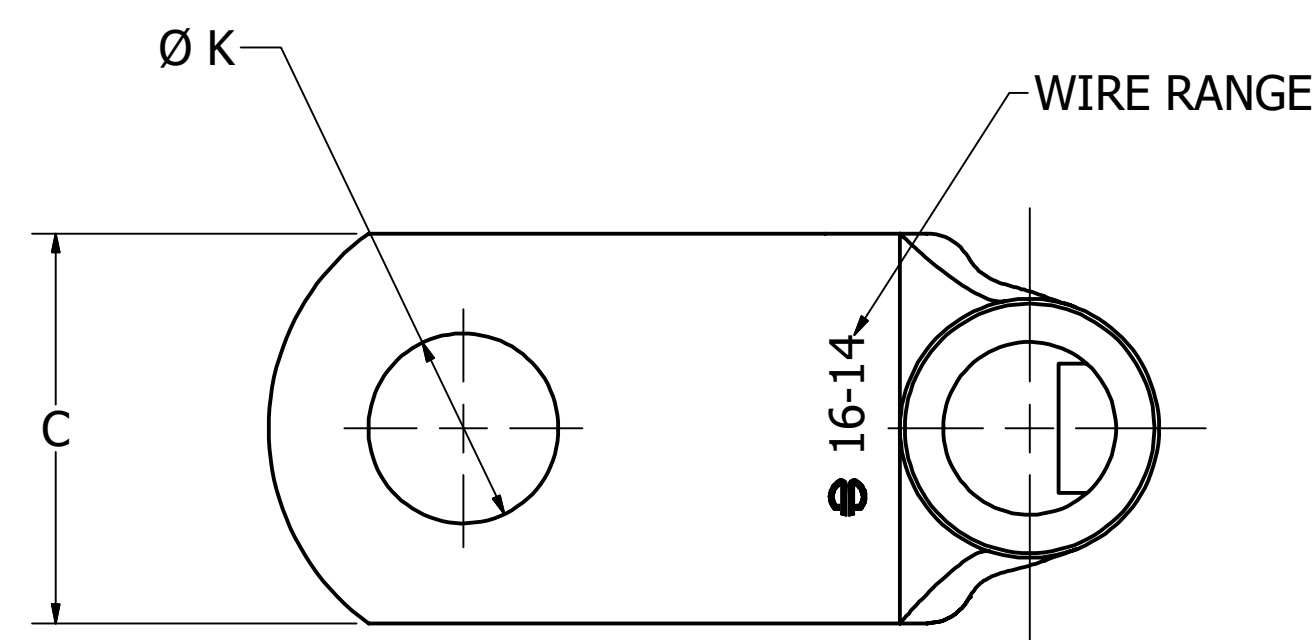
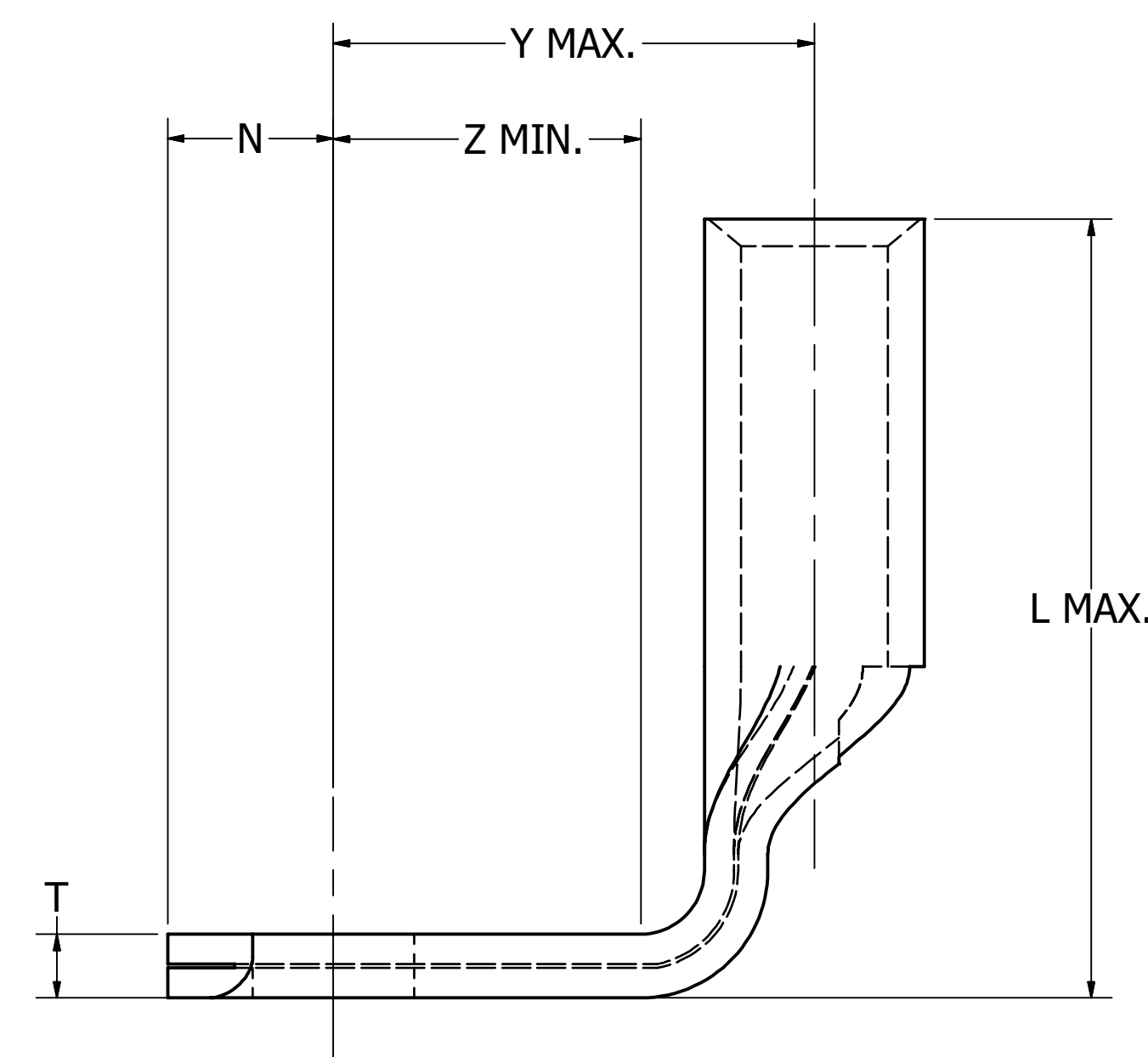
FOR PRODUCT INFO: <http://www.burndy.com>

HYLUG

ITEM NO: SEE TABLE			DRAWING NO	REV
CAT. NO: YAV- RS				
DRAWN BY: R.YOGARAJ	11/2/2018			
CHECKER: V.SAKTHIVEL	11/2/2018			
DSN APRVL: K.CASTONGUAY	11/17/2018	50094166	E	
MFG APRVL: --				
QA APRVL: B.POST	11/5/2018			
MKT APRVL: M.BAILLY	11/7/2018			
PROJECT #: --	SIZE	D	50094166	E
DOCUMENT TYPE: SALES				
REL LEVEL: Released				

REV	DATE	DESCRIPTION	ECO	BY	C'H'K.
E	05/19/2020	UPDATED AS PER MARKUP	53596	SS	YR

WIRE SIZE (AWG), AN Aircraft	STUD SIZE	CATALOG NUMBER	C		K		L MAX.	N		T ±.01 [±.25]	Y MAX.	Z MIN.	WIRE STRIP LENGTH ±.03 [±.8]	DIE INDEX
			MAX.	MIN.	MAX.	MIN.		MAX.	MIN.					
1 Str.	1/4	YAV1CRS1	.76 [19.3]	.70 [17.8]	.28 [7.1]	.26 [6.6]	1.37 [34.8]	.35 [8.9]	.31 [7.9]	.12 [3.0]	.88 [22.4]	.34 [8.7]	5/8" [15.9]	42
	5/16	YAV1CRS2			.34 [8.6]	.32 [8.1]								
	3/8	YAV1CRS			.41 [10.4]	.38 [9.7]								
	1/2	YAV1CRS3			.54 [13.7]	.51 [13.0]								
1/0 Str.	1/4	YAV25RS1	.84 [21.3]	.78 [19.8]	.28 [7.1]	.26 [6.6]	1.53 [38.7]	.41 [10.4]	.37 [9.4]	.12 [3.0]	1.01 [25.7]	.44 [11.1]	11/16" [17.5]	43
	5/16	YAV25RS2			.34 [8.6]	.32 [8.1]								
	3/8	YAV25RS			.41 [10.4]	.38 [9.7]	1.53 [38.7]	.46 [11.7]	.42 [10.7]	.11 [2.8]	1.04 [26.5]	.47 [11.9]		
	1/2	YAV25RS3			.54 [13.7]	.51 [13.0]								
	5/8	YAV25RS4			.67 [16.9]	.65 [16.5]								
2/0 Str.	1/4	YAV26RS1	.95 [24.1]	.89 [22.6]	.28 [7.1]	.26 [6.6]	1.65 [41.8]	.41 [10.4]	.37 [9.4]	.12 [3.0]	1.00 [25.4]	.47 [11.9]	13/16" [20.6]	44
	5/16	YAV26RS2			.34 [8.6]	.32 [8.1]								
	3/8	YAV26RS			.41 [10.4]	.38 [9.7]								
	1/2	YAV26RS3			.54 [13.7]	.51 [13.0]								
3/0 Str.	3/8	YAV27RS	1.05 [26.7]	.99 [25.1]	.41 [10.4]	.38 [9.7]	1.67 [42.4]	.50 [12.7]	.46 [11.7]	.14 [3.6]	1.12 [28.4]	.47 [11.9]	7/8" [22.2]	45
	1/2	YAV27RS1			.54 [13.7]	.51 [13.0]								
4/0 Str.	3/8	YAV28RS	1.15 [29.2]	1.09 [27.7]	.41 [10.4]	.38 [9.7]	1.81 [46.0]	.58 [14.7]	.54 [13.7]	.13 [3.3]	1.37 [34.8]	.69 [17.5]	7/8" [22.2]	46
	1/2	YAV28RS12			.54 [13.7]	.51 [13.0]								
	5/8	YAV28RS13			.67 [17.0]	.65 [16.5]								
	3/4	YAV28RS14	.78 [19.8]	.75 [19.1]	1.81 [46.0]	.64 [16.3]	.60 [15.2]	.13 [3.3]	1.46 [37.1]	.78 [19.8]				
	7/8	YAV28RS54	.92 [23.4]	.89 [22.6]										



NOTES:

1. TERMINAL: TIN PLATED COPPER
2. DIMENSIONS IN BRACKETS [] ARE IN MILLIMETERS AND ARE FOR REFERENCE ONLY.
3. UL LISTED WIRE CONNECTORS PER UL486A/B (FILE E9498) REQUIREMENTS
4. MEETS REQUIREMENTS OF SAE-AS7928 (MAIN OFFICE CAGE CODE NUMBER: 1NJK8)
5. FOR NICKEL PLATED HYLUG™ ADD 'NK' SUFFIX TO CATALOG NUMBERS.

TO ORDER BURNDY® PRODUCTS CALL

UNITED STATES
1-800-346-4175 (LONDONDERRY, NH)

CANADA:
1-800-361-6975 (QUEBEC)
1-800-387-6487 (ALL OTHER PROVINCES)

FOR PRODUCT INFO: <http://www.burndy.com>

HYLUG

ITEM NO: SEE TABLE		
CAT. NO: YAV- RS		
DRAWN BY: R.YOGARAJ	11/2/2018	DRAWING NO
CHECKER: V.SAKTHIVEL	11/2/2018	
DSN APRVL: K.CASTONGUAY	11/17/2018	REV
MFG APRVL: --	--	
QA APRVL: B.POST	11/5/2018	50094166
MKT APRVL: M.BAILLY	11/7/2018	
PROD FAM: --	--	SHEET 2 OF 2
PROJECT #: --	SIZE	
DOCUMENT TYPE: SALES	D	E
REL LEVEL: Released	--	