

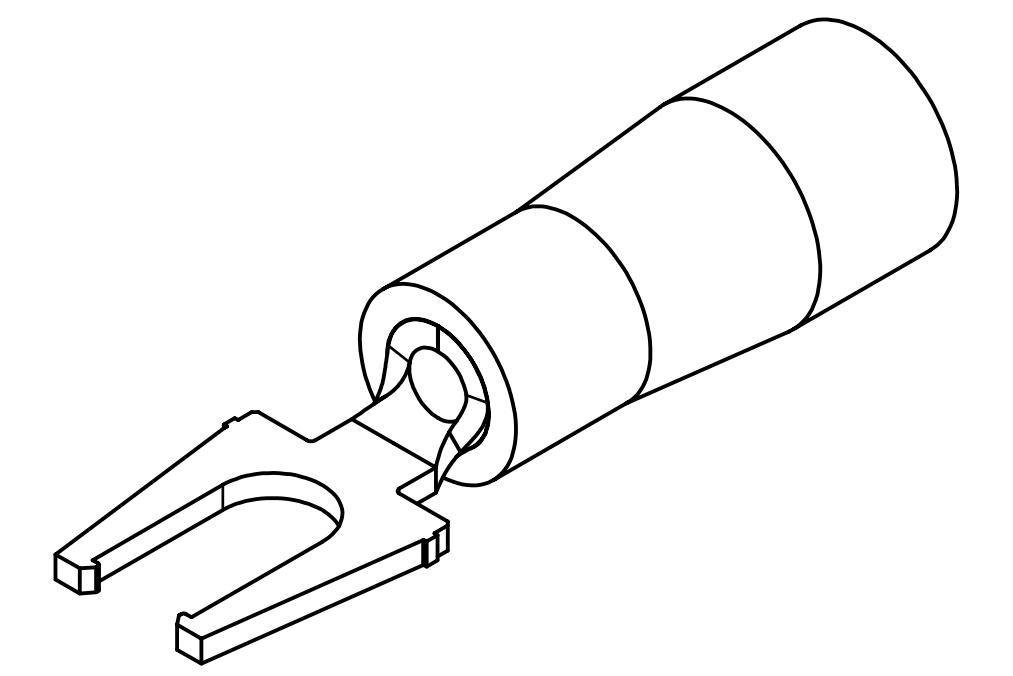
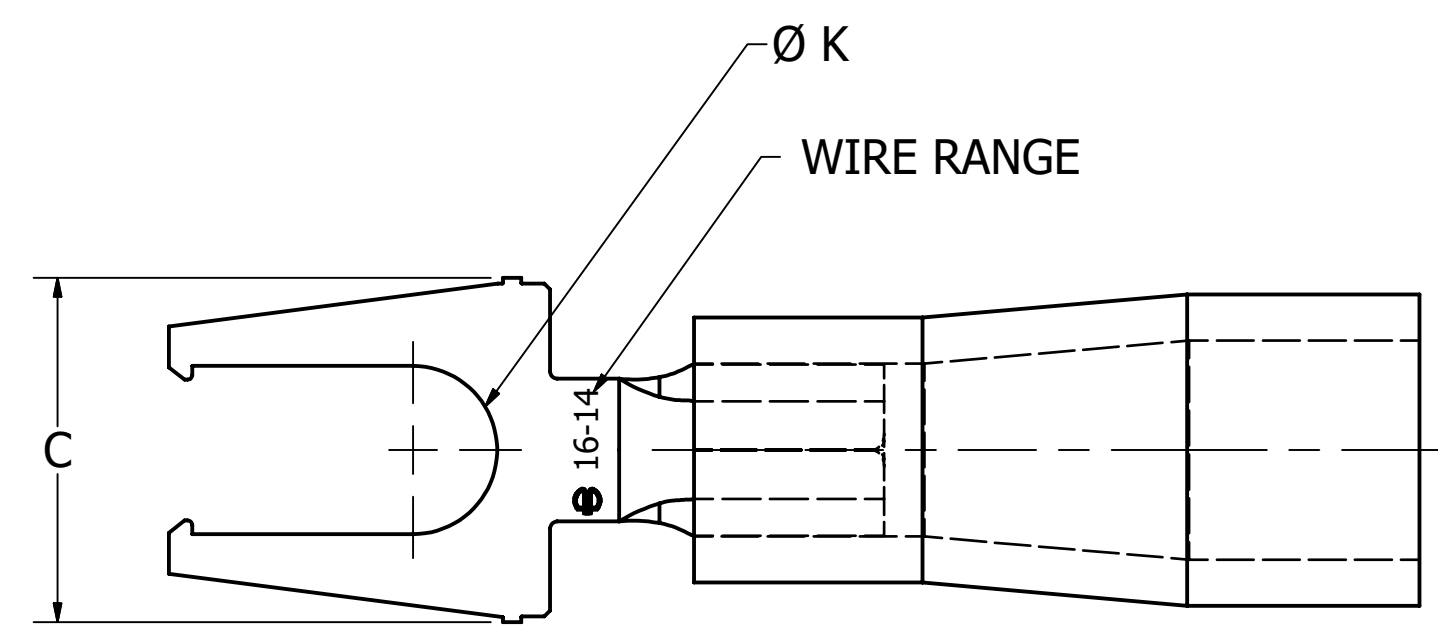
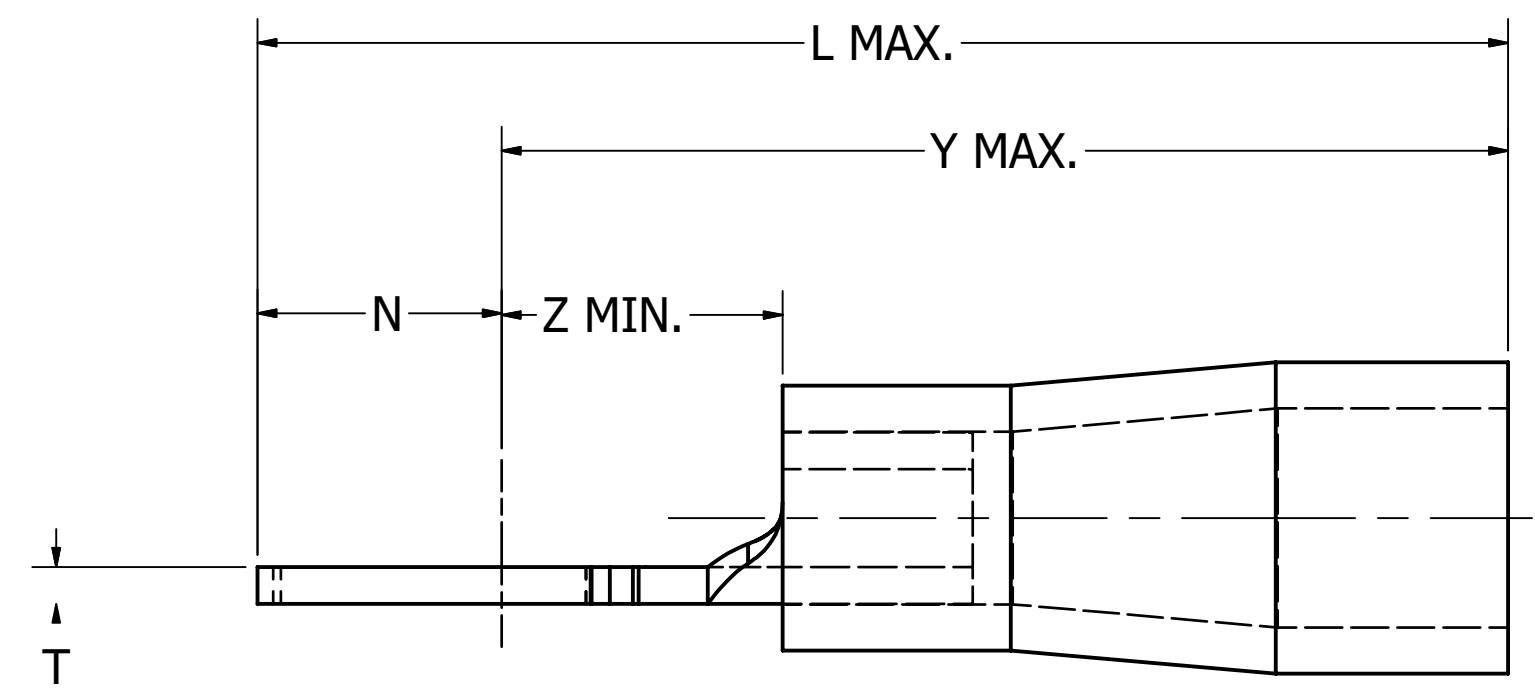
REV	DATE	DESCRIPTION	ECO	BY	CH'K.
B	11/13/2019	NOTES UPDATED AS PER MARKUP	51354	SS	JV

WIRE SIZE (AWG)	STUD SIZE	CATALOG NUMBER	BULK CATALOG NUMBER	TAPE MOUNTED CATALOG NUMBER 2000/REEL	C		K		L MAX.	N		T ±.01 [±.25]	Y MAX.	Z MIN.	MAX. WIRE INSUL. DIA. ACCOM.	WIRE STRIP LENGTH ±.03 [±.8]	COLOR CODE	INSTALLATION TOOLING (ONE CRIMP)
					MAX.	MIN.	MAX.	MIN.		MAX.	MIN.							
22-16 Str. and Sol.	6	TP166LF	BA 16EL6	BA 16EL6M	.29 [7.3]	.27 [6.9]	.15 [3.8]	.14 [3.6]	.87 [22.1]	.21 [5.3]	.19 [4.9]	.03 [.8]	.66 [16.8]	.23 [5.8]	.14 [3.7]	1/4" [6.4]	RED	Y6NCB [J1022NC4], MRE1022NV, MR15 (Wire range is No. 22-18 stranded or solid when crimped with the MR15.)
	8	TP168LF	BA 16EL8	BA 16EL8M	.32 [8.2]	.30 [7.8]	.18 [4.5]	.16 [4.1]	.91 [23.1]	.22 [5.7]	.21 [5.3]		.69 [17.5]	.26 [6.6]				
	10	TP1610LF	BA 16EL10	BA 16EL10M	.37 [9.3]	.35 [8.9]	.23 [5.8]	.19 [4.8]	1.02 [25.9]	.25 [6.3]	.23 [5.9]		.75 [19.0]	.31 [7.9]				
16-14 Str. and Sol.	6	TP146LF	BA 14EL6	BA 14EL6M	.29 [7.3]	.27 [6.9]	.15 [3.8]	.14 [3.6]	.87 [22.1]	.21 [5.3]	.19 [4.9]	.03 [.8]	.66 [16.8]	.23 [5.8]	.18 [4.6]	BLUE	Y6NCB [J1022NC4], MRE1022NV, MR15	
	8	TP148LF	BA 14EL8	BA 14EL8M	.32 [8.2]	.30 [7.8]	.18 [4.5]	.16 [4.1]	.91 [23.1]	.22 [5.7]	.21 [5.3]		.69 [17.5]	.26 [6.6]				
	10	TP1410LF	BA 14EL10	BA 14EL10M	.37 [9.3]	.35 [8.9]	.23 [5.8]	.19 [4.8]	1.02 [25.9]	.25 [6.3]	.23 [5.9]		.75 [19.0]	.31 [7.9]				
12-10 Str.	6	TP106LF	BA 10EL6	BA 10EL6M	.29 [7.3]	.27 [6.9]	.15 [3.8]	.14 [3.6]	1.05 [26.7]	.23 [5.9]	.22 [5.6]	.04 [1.0]	.81 [20.6]	.26 [6.6]	.26 [6.6]	1 1/32" [8.7]	YELLOW	Y6NCB [J1022NC4], MRE1022NV, MR15
	8	TP108LF	BA 10EL8	BA 10EL8M	.32 [8.2]	.30 [7.8]	.18 [4.5]	.16 [4.1]	1.07 [27.2]	.25 [6.4]	.24 [6.0]		.87 [22.1]	.31 [7.9]				
	10	TP1010LF	BA 10EL10	BA 10EL10M	.37 [9.3]	.35 [8.9]	.23 [5.8]	.19 [4.8]	1.16 [29.5]	.27 [6.9]	.26 [6.6]							

NOTES:

1. TERMINAL: TIN PLATED COPPER
2. INSULATION: POLYVINYLCHLORIDE
3. DIMENSIONS IN BRACKETS [] ARE IN MILLIMETERS AND ARE FOR REFERENCE ONLY.
4. DIE SETS ARE LISTED IN BRACKETS [] AFTER THEIR RESPECTIVE TOOLS.
5. FOR CONNECTORS MOUNTED ON MYLAR USE INSTALLATION TOOL OEM175TFM:
 USE DIE SET TFM2218NV FOR WIRE SIZE 22-18
 USE DIE SET TFM1614NV FOR WIRE SIZE 16-14
 USE DIE SET TFM1210NV FOR WIRE SIZE 12-10.
6. REFERENCE DRAWING 50105271 FOR MORE INFORMATION ABOUT TAPE MOUNTED TERMINALS.
7. UL LISTED & CSA CERTIFIED WIRE CONNECTORS PER UL486A/B (FILE E9498) & CSA C22.2 NO.65 REQUIREMENTS (FILE 42862).
8. DISCONTINUED TOOLS: Y6NCP, Y10MRS, Y10MRPA, PATMD1022LI, MR889, MR8891
 CONTACT TECH SERVICE FOR INFORMATION ABOUT APPROVED APPLICATIONS (1-800-451-4956).
9. WIRE CONNECTOR:
 600V MAXIMUM
 BUILDING WIRE: 1000V MAXIMUM, SIGNS OR LUMINARIES
 TEMPERATURE RATING OF INSULATING MATERIAL 105°C
 FLAME RATING: UL94 V-0.

10. BULK CATALOG NUMBERS ARE ONLY UL LISTED AND CSA CERTIFIED WHEN CRIMPED WITH THE MR15.



TO ORDER BURNDY® PRODUCTS CALL UNITED STATES 1-800-346-4175 (LONDONDERRY, NH) CANADA: 1-800-361-6975 (QUEBEC) 1-800-387-6487 (ALL OTHER PROVINCES) FOR PRODUCT INFO: http://www.burndy.com	VINYLUG	
	ITEM NO: SEE TABLE	
	CAT. NO: TYPE TP-LF & BA-EL	
	DRAWN BY: P.WINSON	10/01/2018
	CHECKER: P.PRASANTH	10/01/2018
	DSN APRVL: K.CASTONGUAY	10/16/2018
	MFG APRVL: --	
	QA APRVL: B.POST	10/05/2018
	MKT APRVL: M.BAILLY	10/10/2018
	PROD FAM: --	
PROJECT #: --	SIZE	DRAWING NO
DOCUMENT TYPE: SALES	D	50094176
REL LEVEL: Released		SHEET 1 OF 1
		B