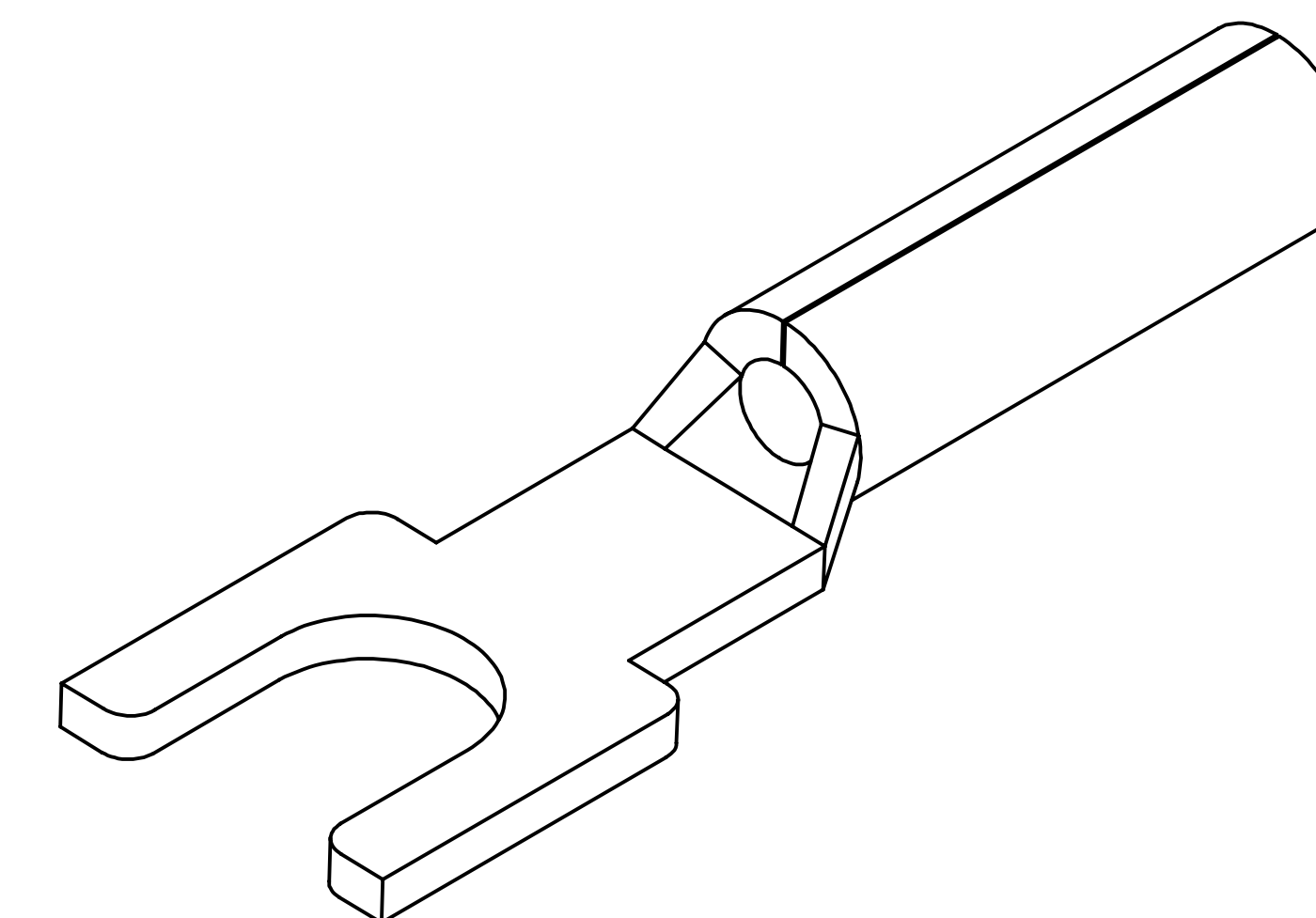
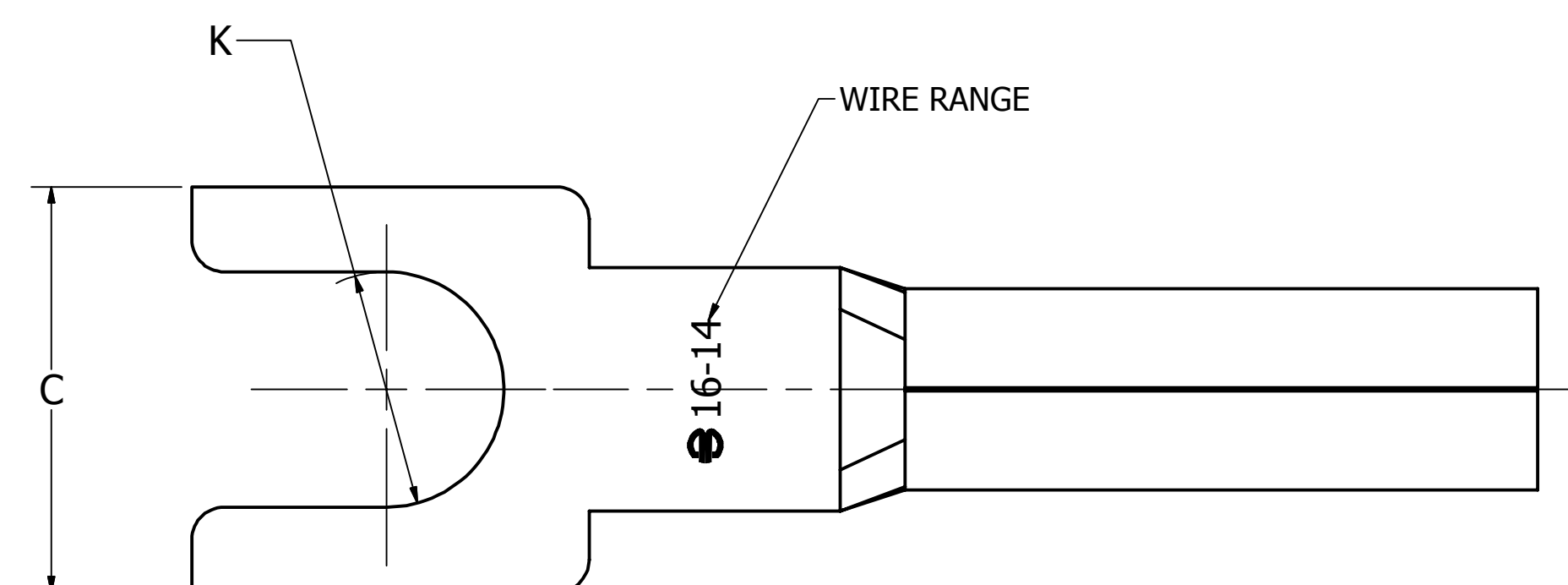
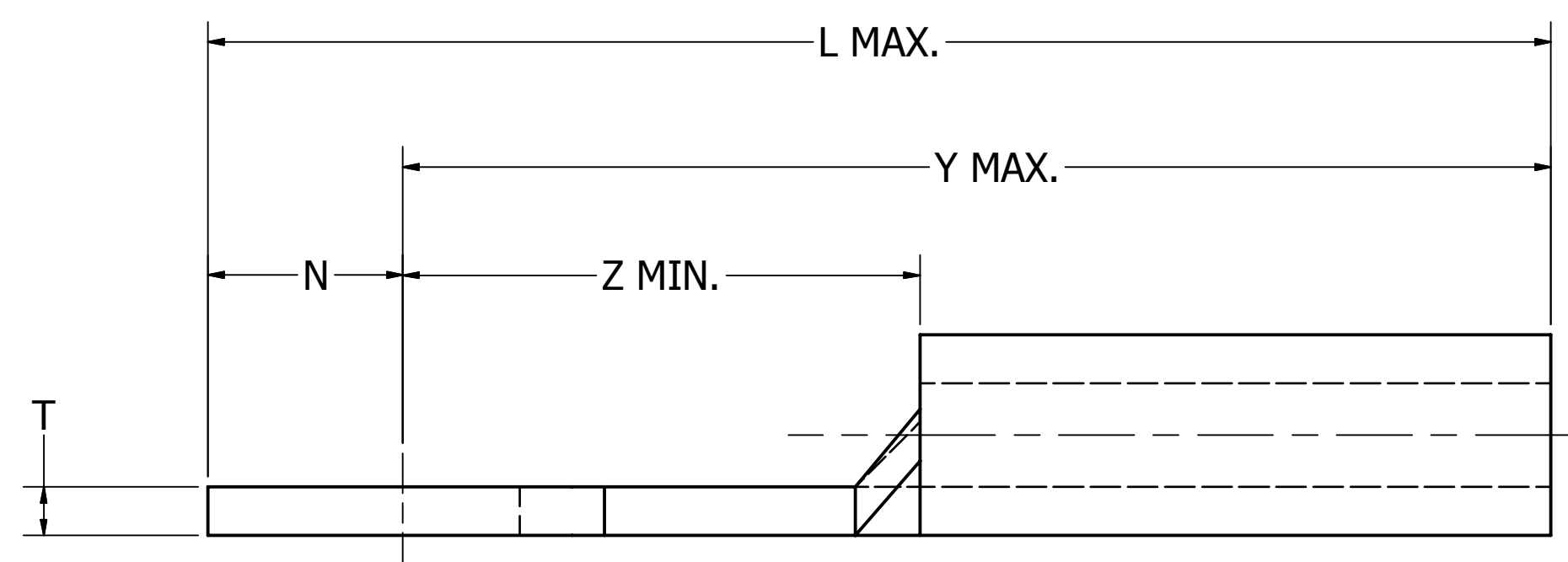


REV	DATE	DESCRIPTION	ECO	BY	C'H'K.
A	10/09/2018	NEW DRAWING CREATION	50046	YR	VS

WIRE SIZE (AWG)	STUD SIZE	CATALOG NUMBER	C		K		L MAX.	N		T ±.01 [±.25]	Y MAX.	Z MIN.	WIRE STRIP LENGTH ±.03 [±.8]	INSTALLATION TOOLING (ONE CRIMP)
			MAX.	MIN.	MAX.	MIN.		MAX.	MIN.					
22-18 Str. and Sol.	6	T166BF	.28 [7.1]	.22 [5.6]	.15 [3.8]	.14 [3.6]	.76 [19.3]	.22 [5.6]	.16 [4.1]	.03 [.8]	.60 [15.2]	.29 [7.4]	9/32" [7.1]	MRE1022B, MR8G98, Y8MRB1, MR20, Y10D, Y1022
	8	T168BF	.32 [8.3]	.26 [6.7]	.18 [4.5]	.16 [4.1]								
	10	T1610BF	.34 [8.7]	.28 [7.2]	.23 [5.8]	.19 [4.8]								
16-14 Str. and Sol.	6	T146BF	.28 [7.1]	.22 [5.6]	.15 [3.8]	.14 [3.6]	.74 [18.8]							
	8	T148BF	.33 [8.4]	.27 [6.9]	.18 [4.5]	.16 [4.1]								
	10	T1410BF	.35 [8.9]	.29 [7.4]	.23 [5.8]	.19 [4.8]								
12-10 Str. and Sol.	6	T106BF	.33 [8.3]	.27 [6.8]	.15 [3.8]	.14 [3.6]	.75 [19.0]	.24 [6.1]	.18 [4.6]	.04 [1.0]	.57 [14.5]	.26 [6.7]	11/32" [8.7]	
	8	T108BF	.36 [9.0]	.30 [7.5]	.18 [4.5]	.16 [4.1]								
	10	T1010BF	.38 [9.7]	.32 [8.1]	.23 [5.8]	.19 [4.8]								



NOTES:

1. TERMINAL: TIN PLATED COPPER
2. DIMENSIONS IN BRACKETS [ ] ARE IN MILLIMETERS AND ARE FOR REFERENCE ONLY.

TO ORDER BURNDY® PRODUCTS CALL		HYDENT	
UNITED STATES 1-800-346-4175 (LONDONDERRY, NH)		ITEM NO: --	
CANADA: 1-800-361-6975 (QUEBEC) 1-800-387-6487 (ALL OTHER PROVINCES)		CAT. NO: TYPE T-BF	
FOR PRODUCT INFO: <a href="http://www.burndy.com">http://www.burndy.com</a>		DRAWN BY: R.YOGARAJ 10/9/2018	
		CHECKER: V.SAKTHIVEL 10/9/2018	
		DSN APRVL: --	
		MFG APRVL: --	
		QA APRVL: --	
		MKT APRVL: --	
		PROD FAM: --	
		PROJECT #: --	
		SIZE	
		D	
		DRAWING NO	
		50094180	
		REV	
		A	
		SHEET 1 OF 1	